

8700 8600 8500 8400 8300 8200 8100 8000 7900 7800 7700 7600 7500 7400 7300 7200 7100 7000 6900 6800 6700 6600 6500 6400 6300 6200 6100

# CORNUCOPIA GOLD MINES

CORNUCOPIA OREGON

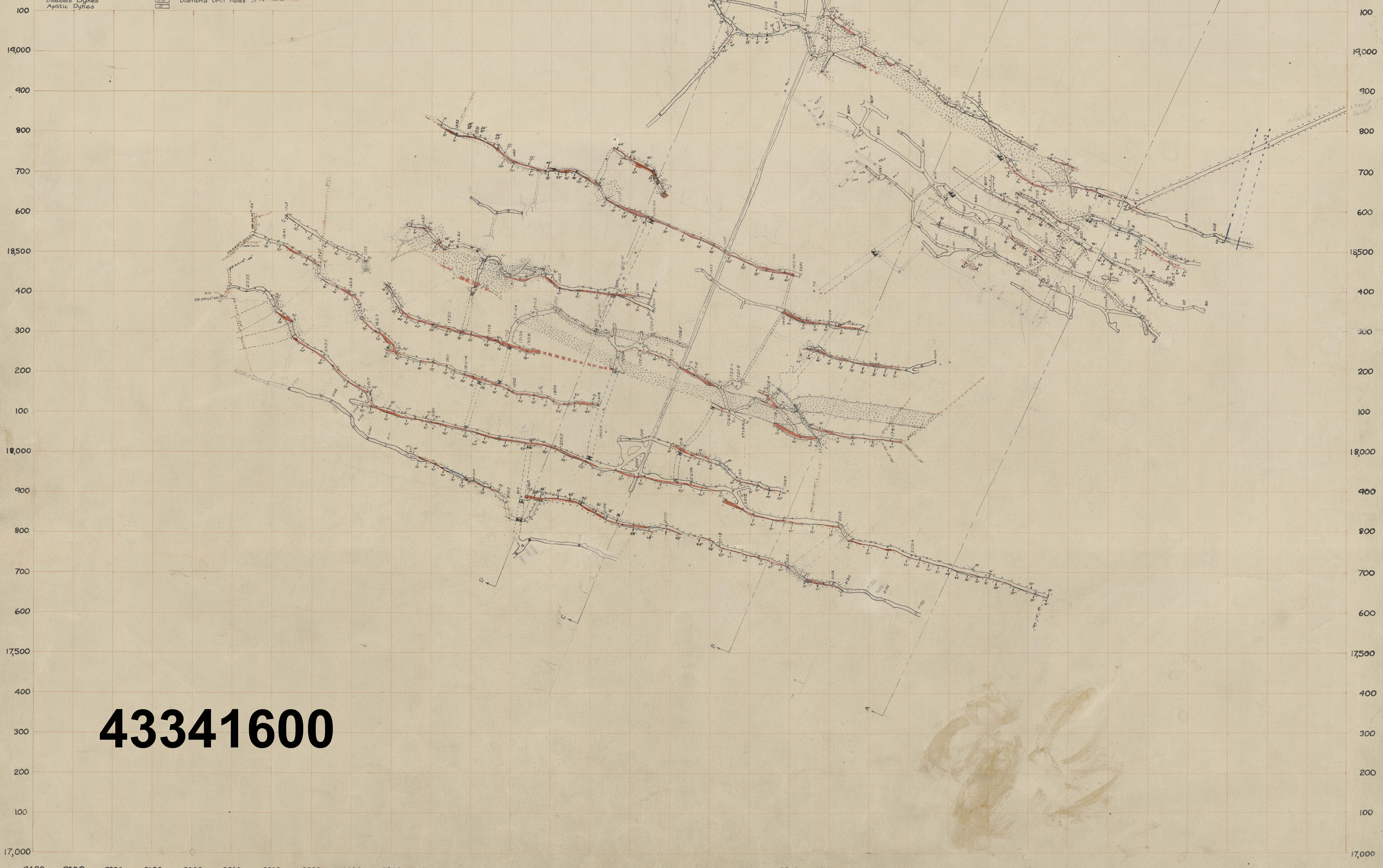
## PLAN MAP OF THE UNION MINE

### SHOWING MAJOR GEOLOGIC FEATURES

SCALE 1"=100' GEOLOGIST *H. J. Anderson* ENGINEER *H. J. Anderson* FEBRUARY - 1940

#### EXPLANATION

- |                       |                       |
|-----------------------|-----------------------|
| Vein Matter           | Geologic Boundaries   |
| Quartz                | Altered Wall Rock     |
| Altered Wall Rock     | Gouge - Fault Breccia |
| Gouge - Fault Breccia | Wall Rock             |
| Wall Rock             | Granodiorite          |
| Granodiorite          | Hornfels              |
| Hornfels              | Basalt Dykes          |
| Basalt Dykes          | Aplitic Dykes         |
| Aplitic Dykes         |                       |
- 
- |                     |                                |
|---------------------|--------------------------------|
| Geologic Boundaries | Faults                         |
| Shafts              | Transfer Raises                |
| Slope Raises        | Workings not in plane of level |
| Diamond Drill Holes |                                |



# 43341600

4400 4300 4200 4100 4000 3900 3800 3700 3600 3500 3400 3300 3200 3100 3000 2900 2800 2700 2600 2500 2400 2300 2200 2100 2000 1900 1800 1700