

Dunkin Traverstone Deposits  
15. May Sept 1944

# 43339300

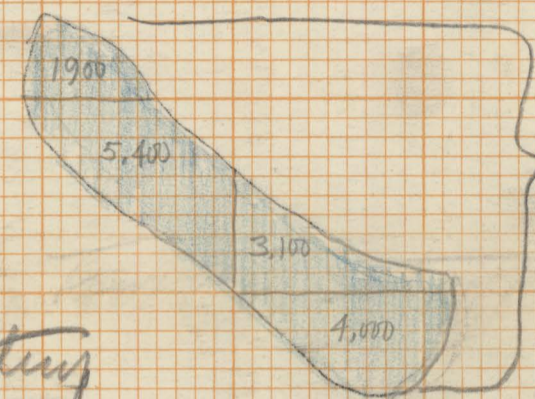
## Major Traverstone outcrops

Calculations of square footage of outcrop areas made by counting squares + fractions thereof.

Scale 1" = 100'  
One small square = 100 sq ft.



244,900 sq ft.  
Traverstone Outcrop



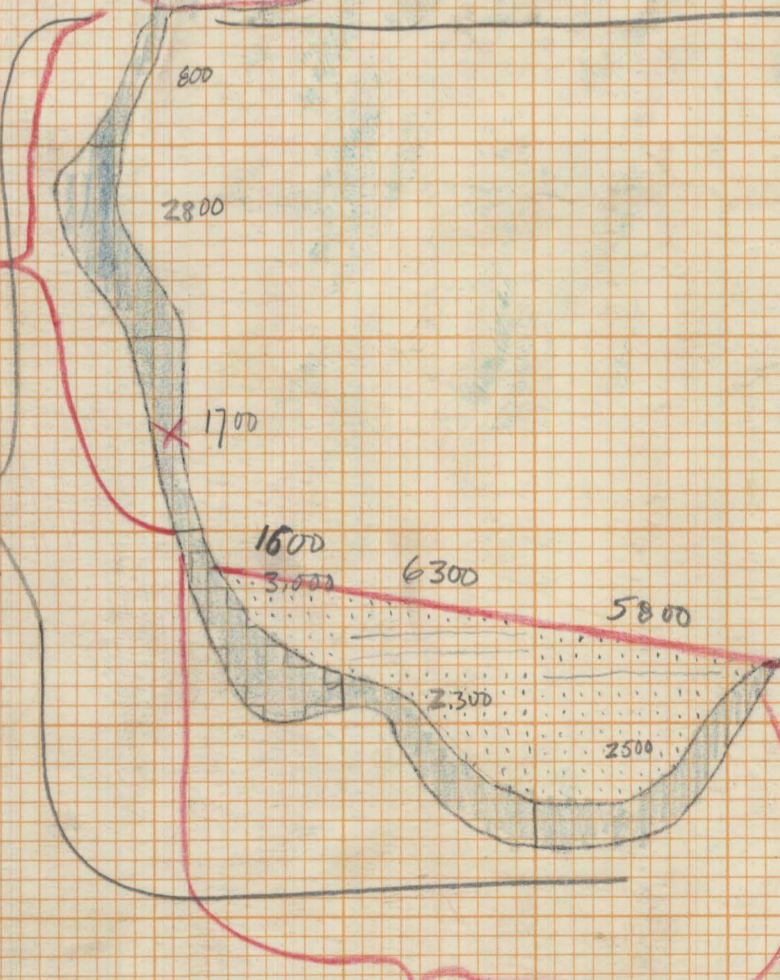
14,400 sq ft.  
Traverstone Outcrop

No 4 - without extension 47,800

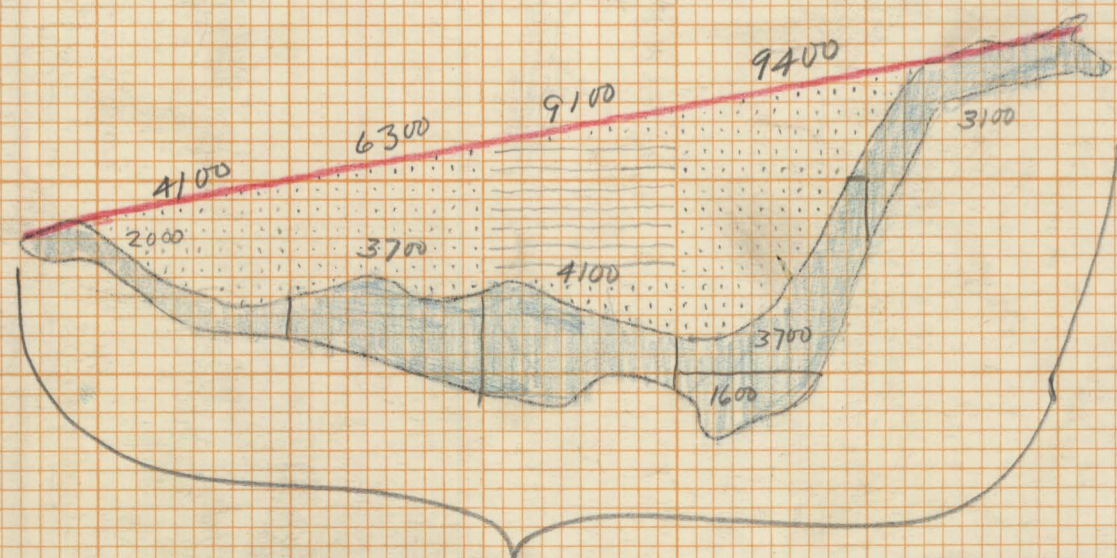
197,100 sq ft with  
No 4 out

No 4 Extension  
5,300 or  
4,400 to X

13,100 sq ft  
Traverstone Outcrop



7,800 - or  
8700 to X



18,200 sq ft Traverstone Outcrop.

244,900  
18,200  
13,100  
14,400  
290,600

total sq ft of Traverstone Outcrop.

Map of Major Outcrops of Traverstone which is unquestionably in place.