

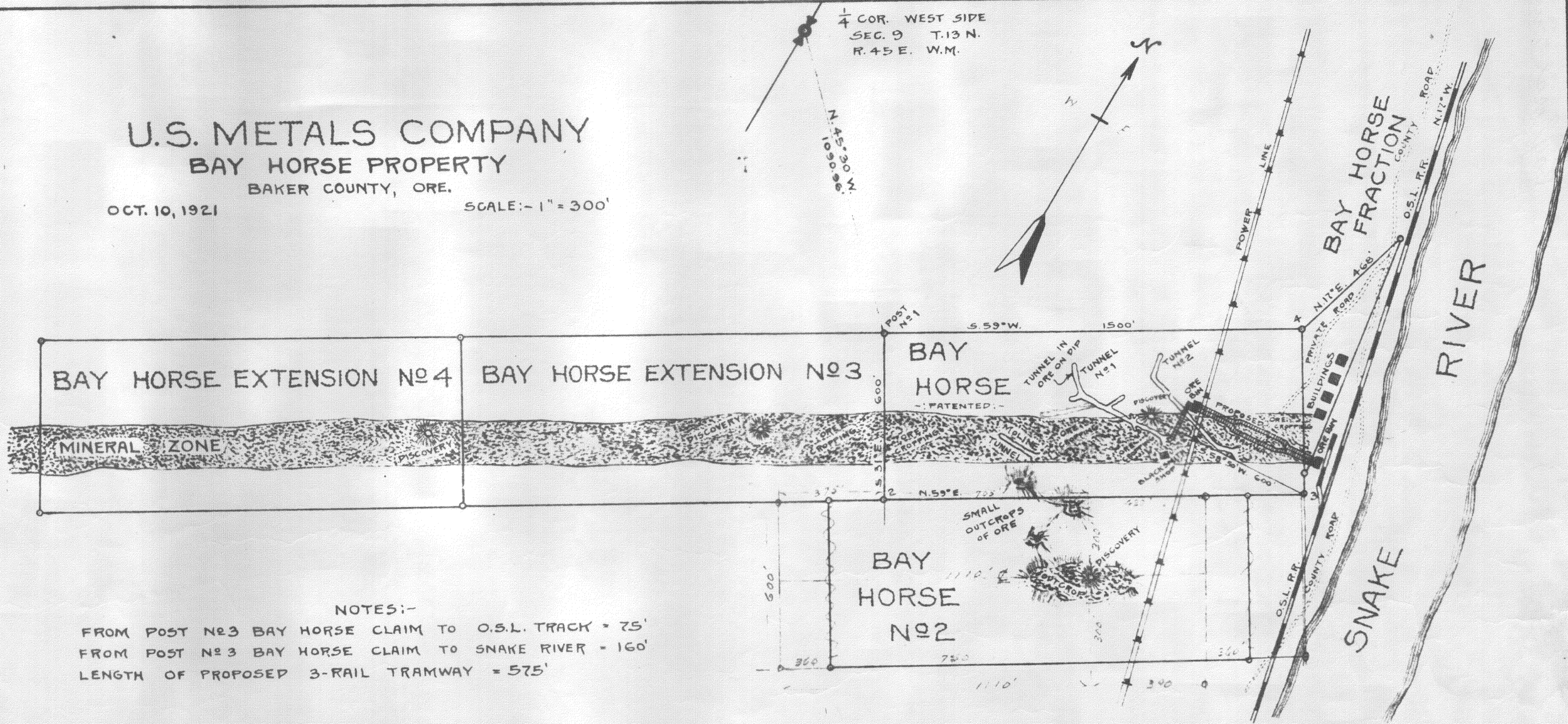
GEOLOGICAL CROSS SECTION

NOTE:- LAVA FLOW OF VARIOUS KINDS IS THE GENERAL FORMATION. ONE BLENDS INTO ANOTHER WITHOUT ANY DEFINITE LINE OF DISTINCTION.

**U.S. METALS COMPANY
BAY HORSE PROPERTY**

OCT. 10, 1921

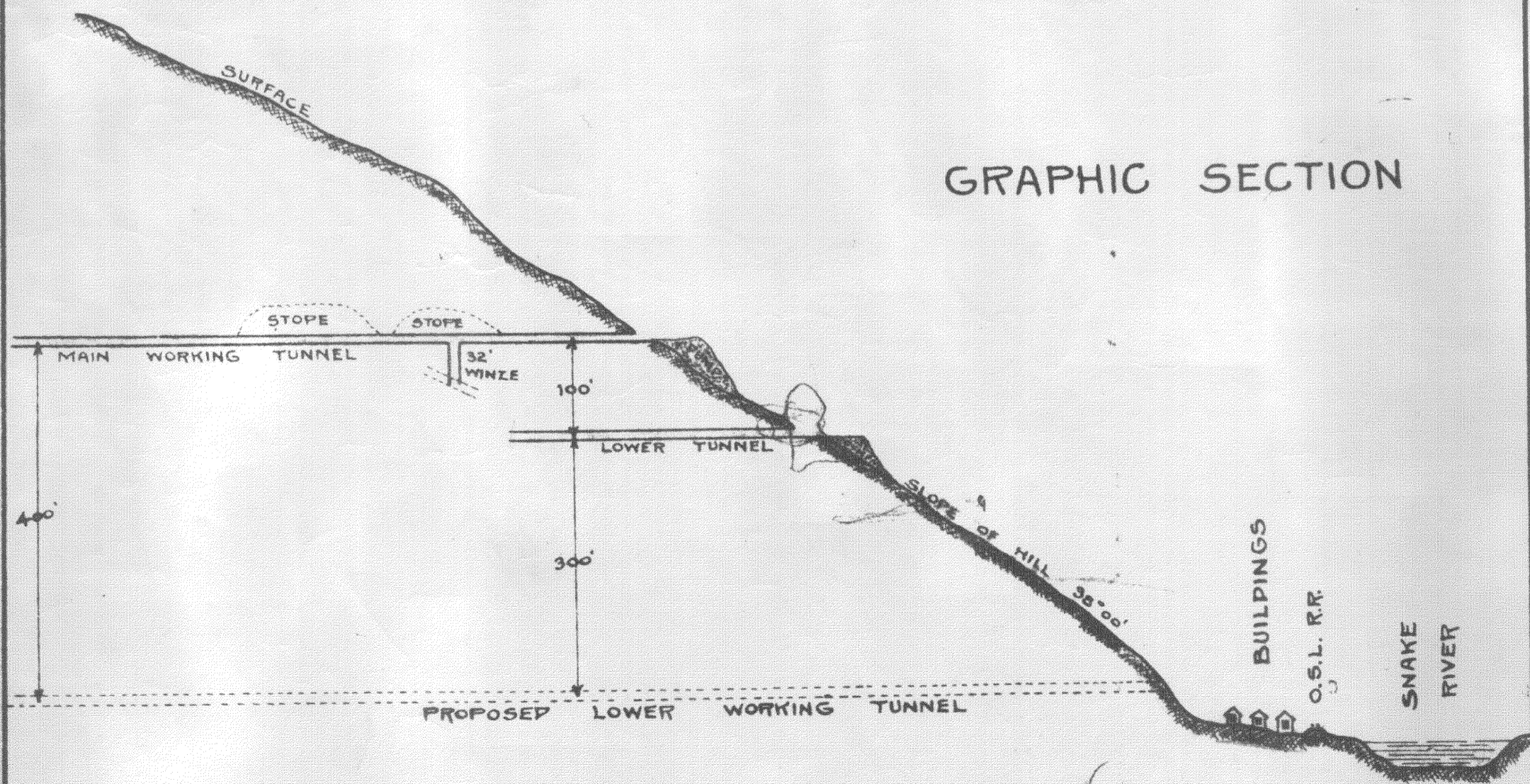
SCALE:- 1" = 300'



NOTES:-

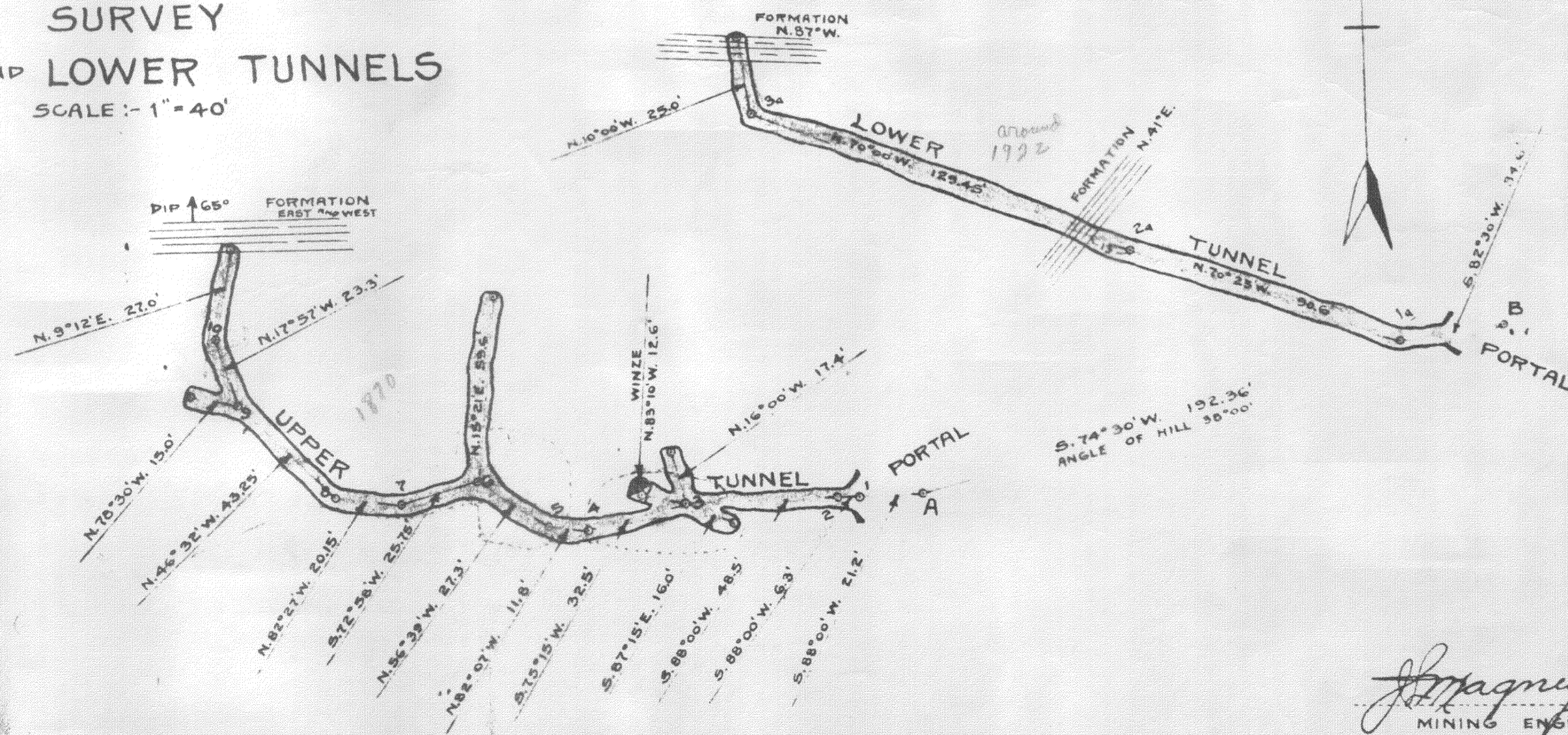
FROM POST NO. 3 BAY HORSE CLAIM TO O.S.L. TRACK = 75'
FROM POST NO. 3 BAY HORSE CLAIM TO SNAKE RIVER = 160'
LENGTH OF PROPOSED 3-RAIL TRAMWAY = 575'

GRAPHIC SECTION



**SURVEY
UPPER AND LOWER TUNNELS**

SCALE:- 1" = 40'



J. Magney
MINING ENGINEER