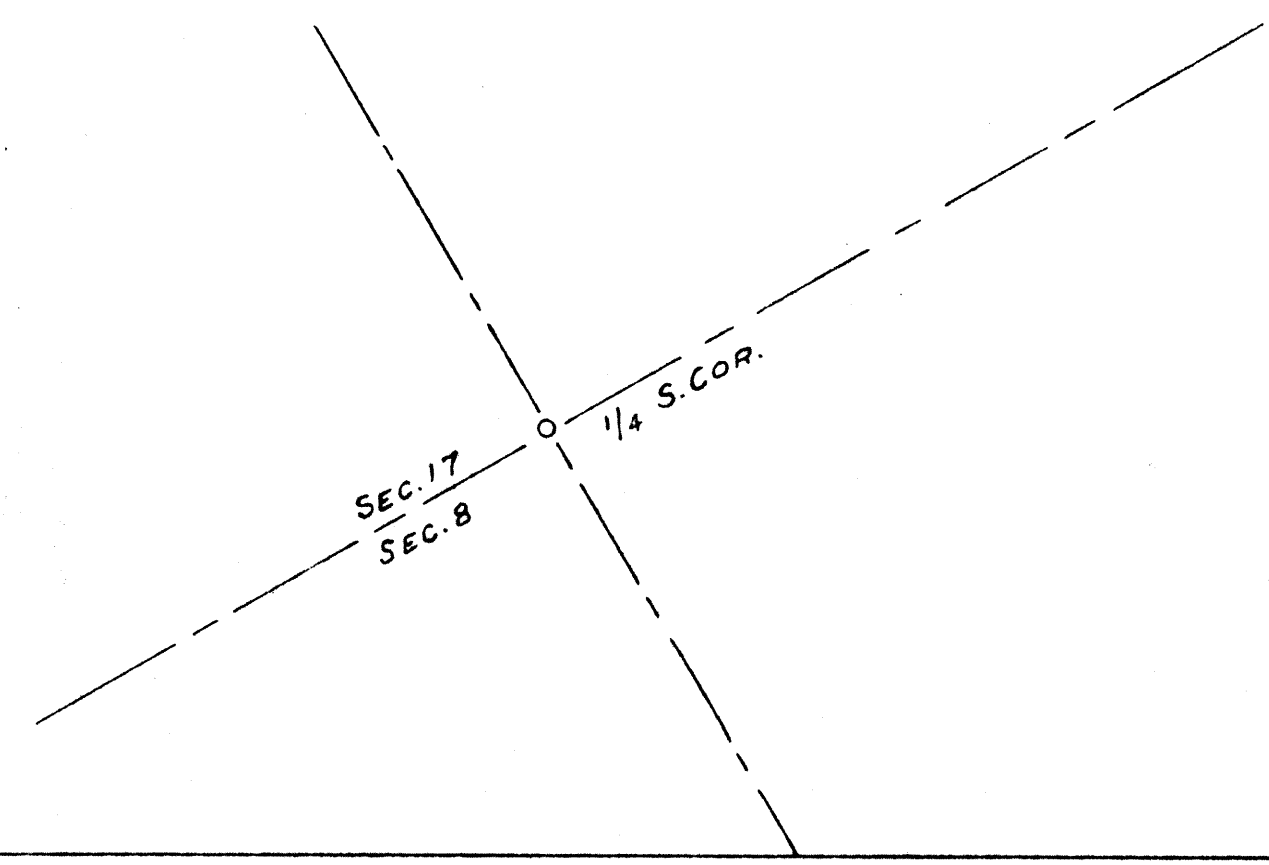
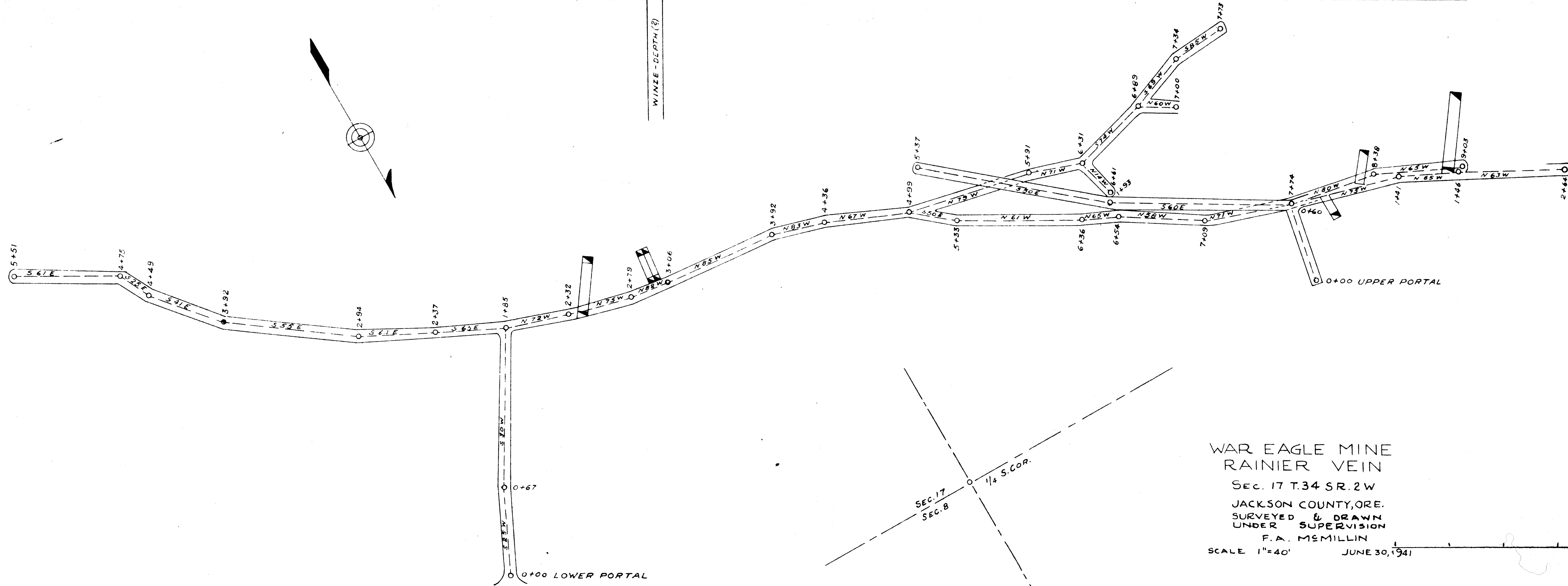


WINZE-DEPTH (?)



WAR EAGLE MINE
 RAINIER VEIN
 SEC. 17 T. 34 SR. 2 W
 JACKSON COUNTY, ORE.
 SURVEYED & DRAWN
 UNDER SUPERVISION
 F. A. MEMILLIN
 SCALE 1"=40' JUNE 30, 1941

War Eagle Mine - Rainier Vein