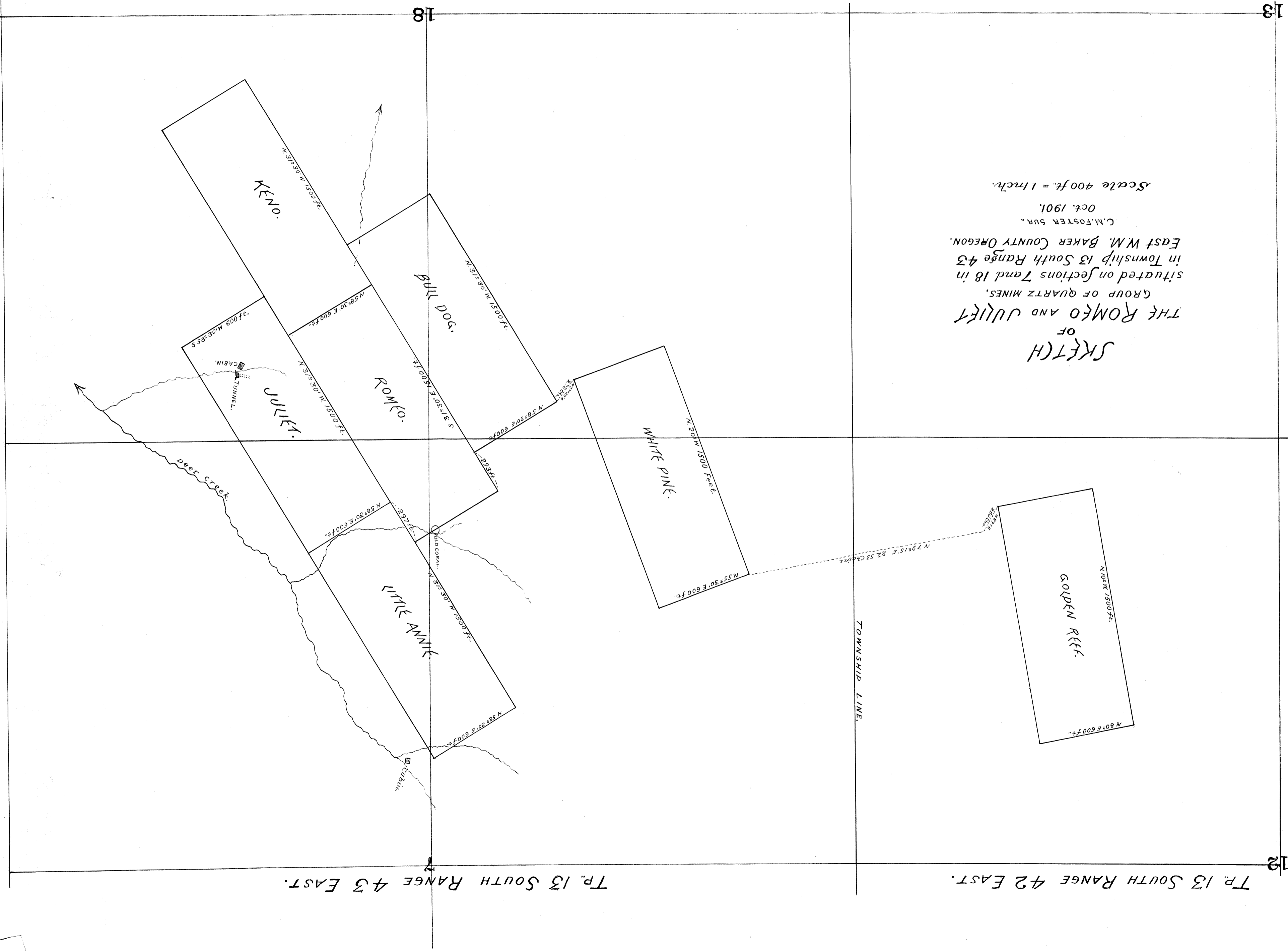


SKETCH
OF
THE ROMKO AND JULIEN
GROUP OF QUARTZ MINES,
situated on sections 7 and 18 in
Township 13 South Range 43
East W.M. Baker County Oregon.
C.M. FOSTER SUR.
Oct. 1901.
Scale 400 ft. = 1 inch.



TP. 13 SOUTH RANGE 43 EAST.

TP. 13 SOUTH RANGE 42 EAST.