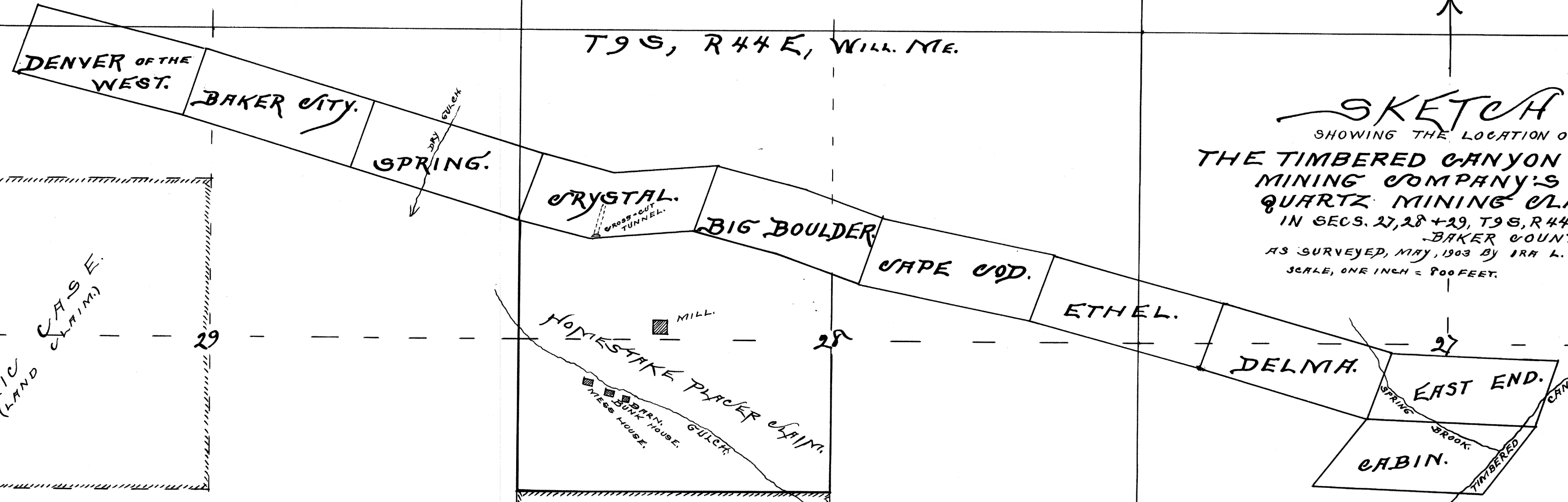




T9 S, R44 E, WILL. ME.



SKETCH
 SHOWING THE LOCATION OF
**THE TIMBERED CANYON GOLD
 MINING COMPANY'S
 QUARTZ MINING CLAIMS**
 IN SECS. 27, 28 + 29, T9 S, R44 E, W.M.,
 BAKER COUNTY, ORE.
 AS SURVEYED, MAY, 1903 BY IRA L. HOFFMAN.
 SCALE, ONE INCH = 900 FEET.

ALEX
 (LAND CLAIM)
 KASE
 (CLAIM)

ROB. B. JAMES.
 (LAND CLAIM.)

Survey conducted by Ira L. Hoffman