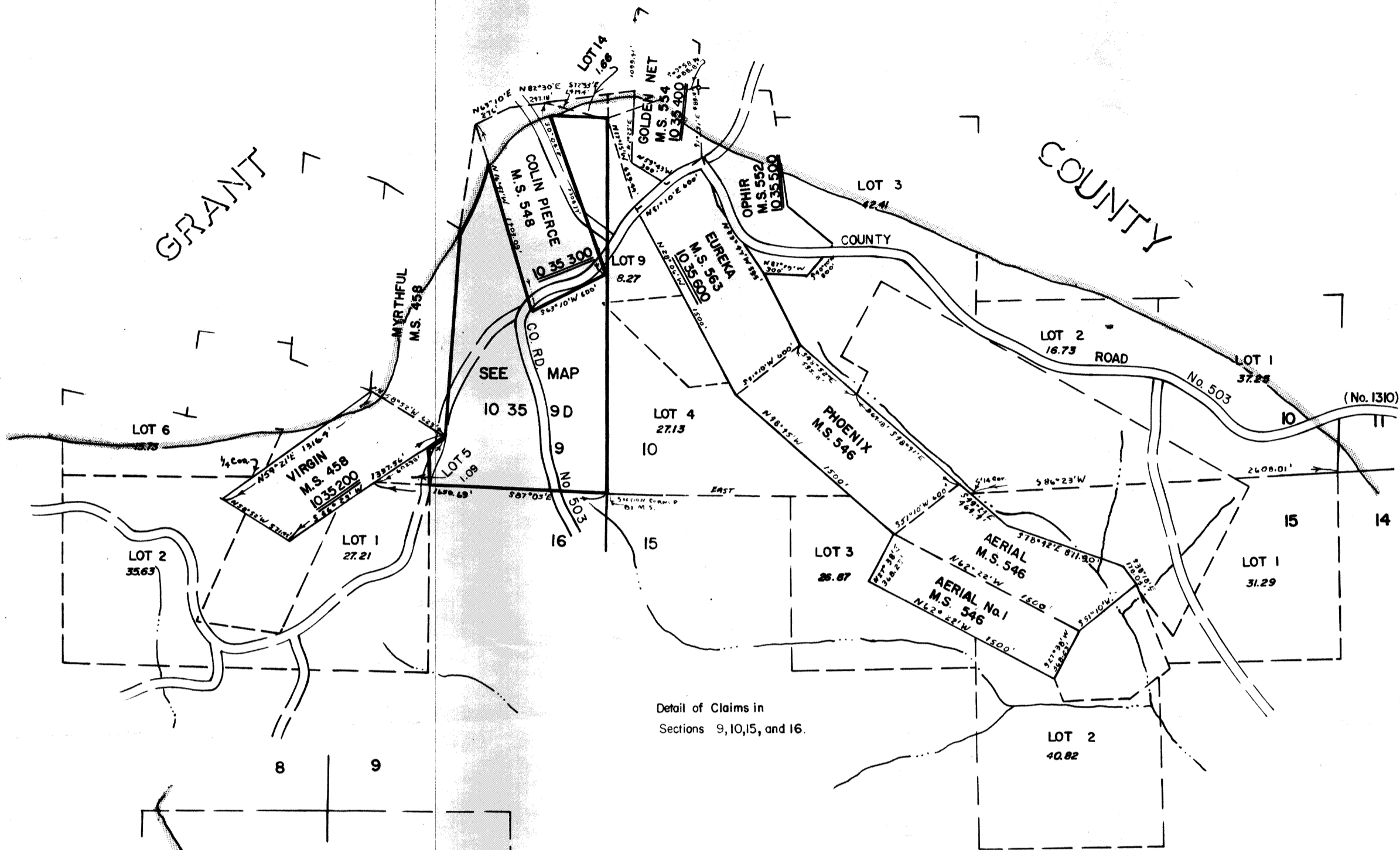


MINING CLAIMS T10S R35E W.M.
BAKER COUNTY

1" = 800'

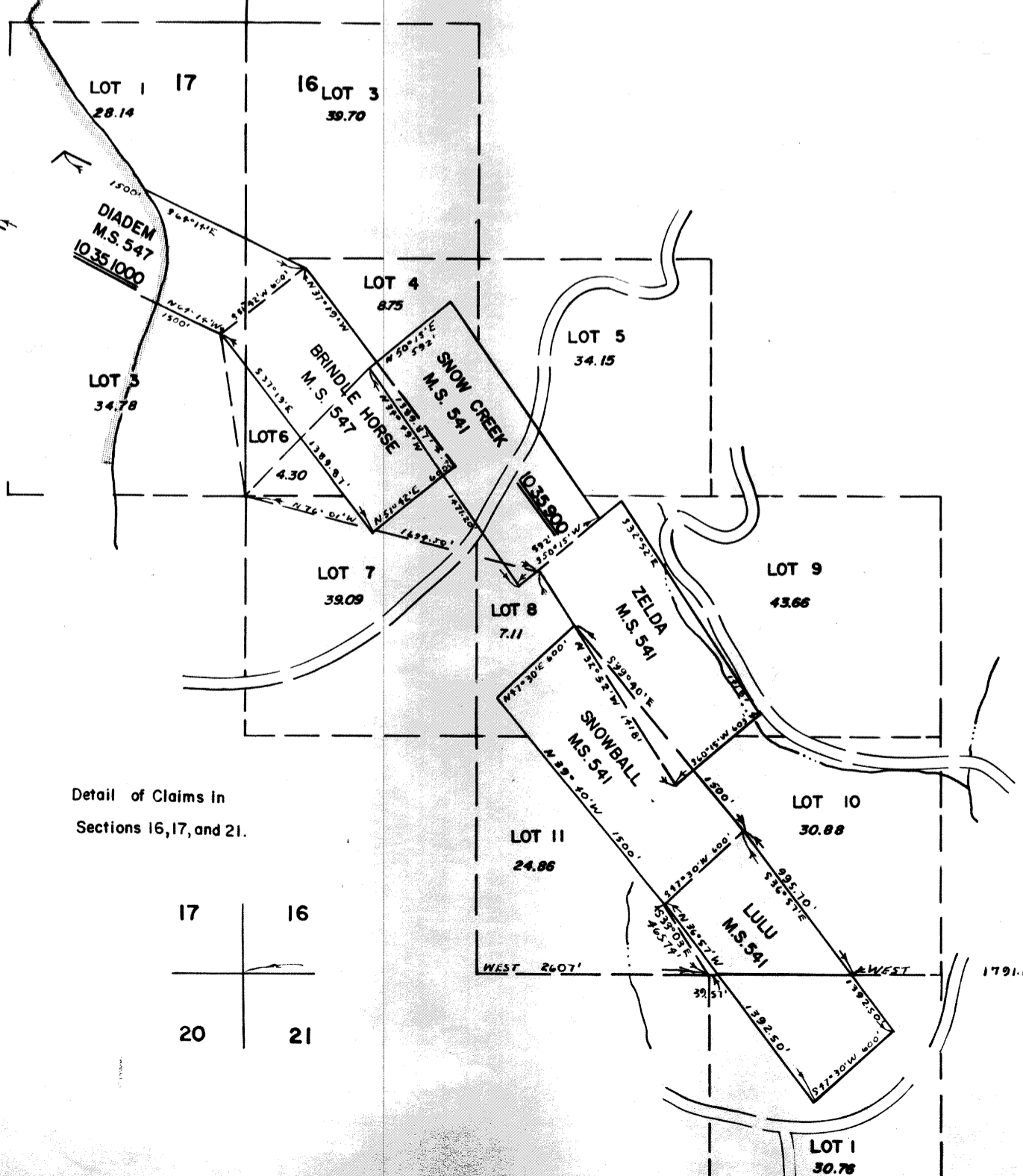
10 35
DETAIL SHEET

REFER TO 10 35 FOR
LOCATION & TAX LOTTING

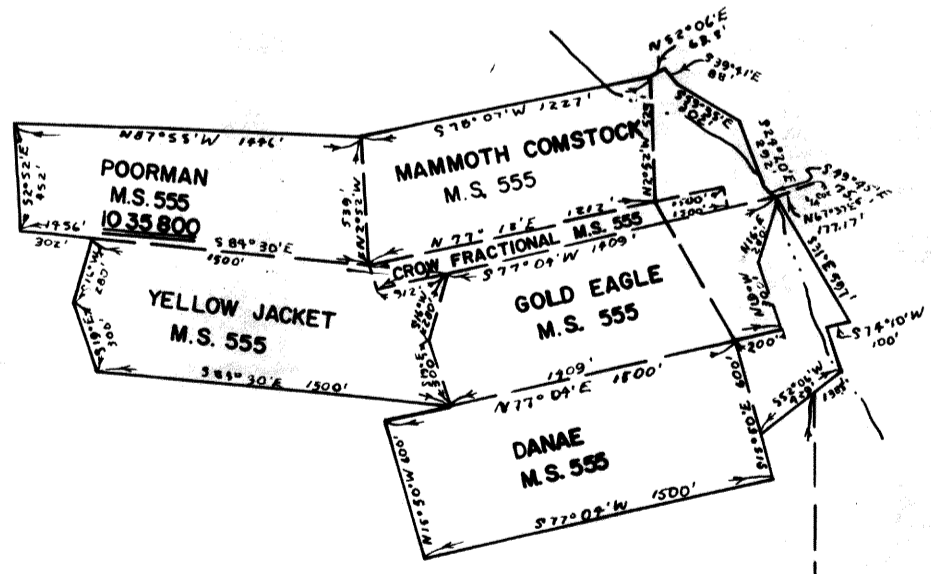


NOTE: ROAD Nos. IN PARENTHESES IS THE OLD CO. RD. No. PRIOR TO COUNTY COURT ORDER OF 11/31/71 (71-44-157).

GRANT COUNTY



17	16
20	21



16	15
21	22

15	14
22	21

10 35
DETAIL SHEET