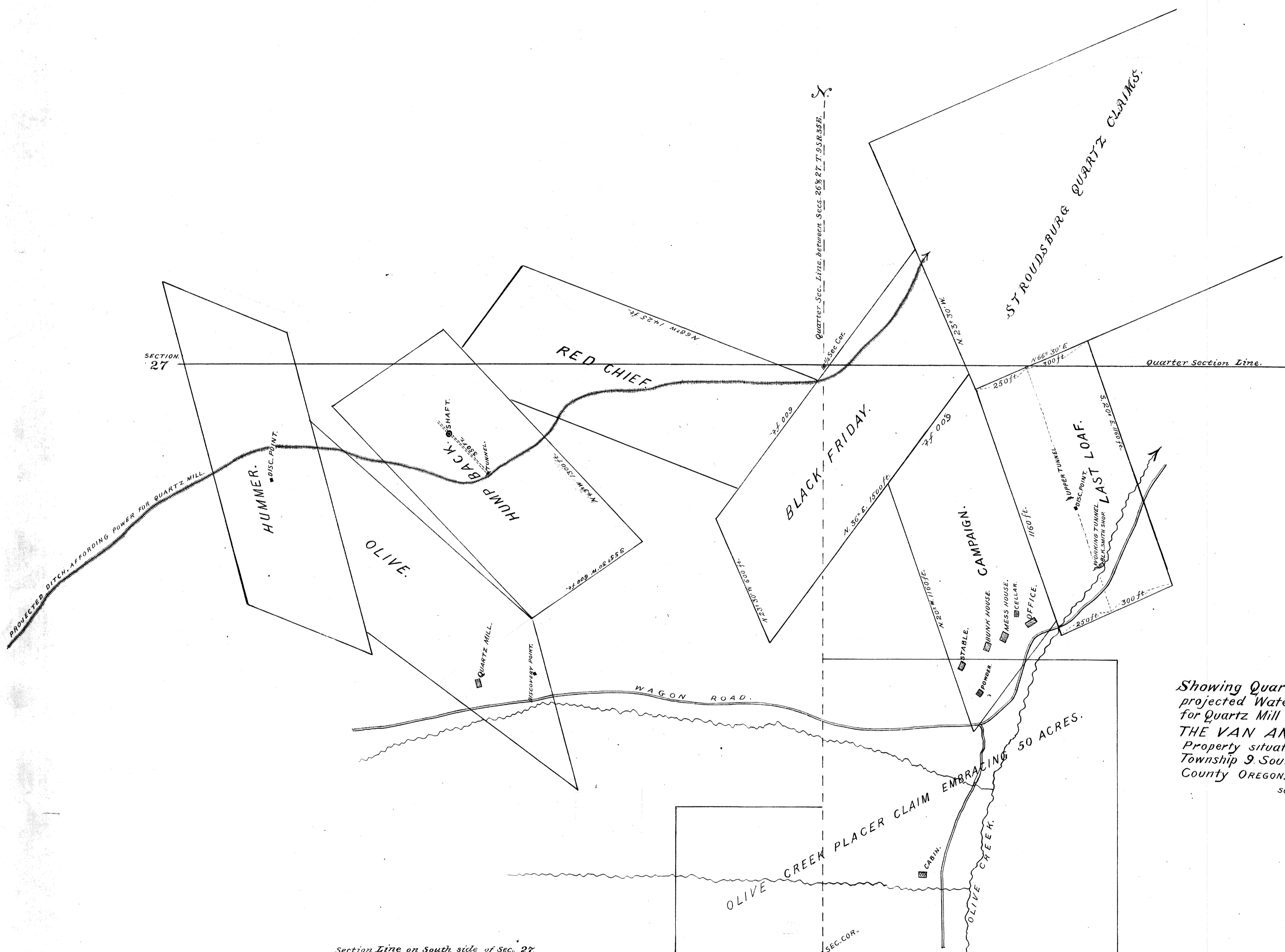


SECTION 27

SECTION 26



**SKETCH**  
 Showing Quartz Mines Placer Ground and projected Water Ditch for generating power for Quartz Mill and other improvements; Owned by THE VAN ANDA GOLD MINING COMPANY. Property situated on Sections 26 and 27 in Township 9. South Range 35 East in Grant County OREGON.

SURVEYED AND DRAWN SEPT. 1899  
 C. M. Foster Sur.  
 Scale 300 Ft = 1 Inch.

Section Line on South side of Sec. 27.