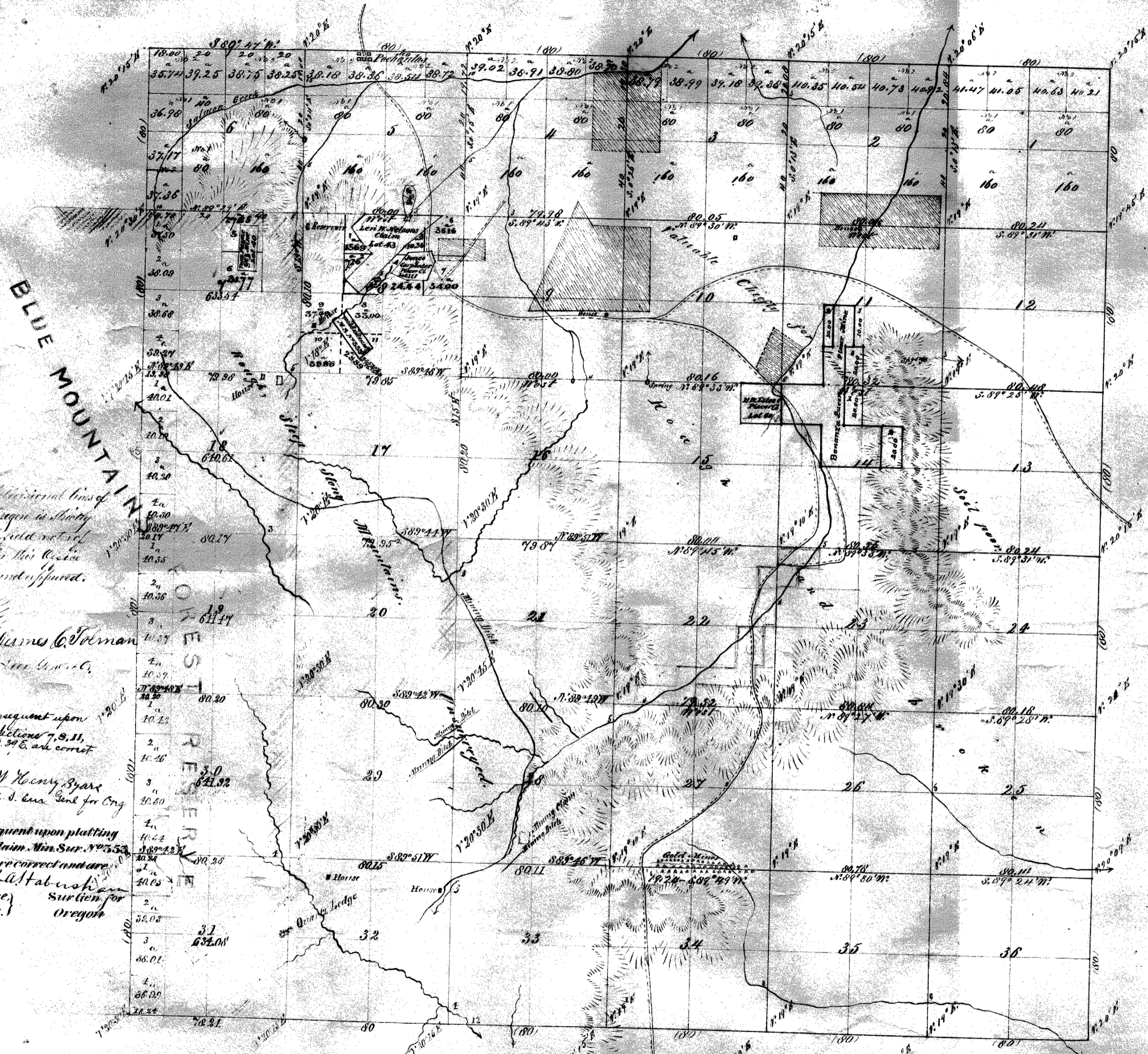


Township No. 9 South Range No. 39 East Will. Mer.



General Description
 The above map of the Township of 36 sections, Range No. 39 East, is strictly conformable to the survey and field notes thereof on file in this office, which have been examined and approved by the Surveyor General's Office, Portland, Oregon, Nov. 5th 1884.

Total Acres 8951.62

The area and lottings consequent upon platting Mineral Claims in Sections 7, 8, 11, 14, and 15 Township No. 9 S. R. 39 E. are correct and are hereby approved.
 U. S. Surveyor General's Office, Portland Oregon
 December 5th 1879 James C. Tolman
 U. S. Surveyor Genl for Oreg.

The areas and lottings consequent upon platting the Young American Quartz Claim, Min. Sur. No. 553 in SW 1/4 Sec. 8, T. 9 S. R. 39 E. are correct and are hereby approved.
 U. S. Surveyor General's Office, Portland Oregon, Nov. 5th 1884.
 Robert A. Faber, Surveyor for Oregon

The areas and lottings consequent upon platting the Young American Quartz Claim, Min. Sur. No. 553 in SW 1/4 Sec. 8, T. 9 S. R. 39 E. are correct and are hereby approved.
 U. S. Surveyor General's Office, Portland Oregon, Nov. 5th 1884.
 Robert A. Faber, Surveyor for Oregon

Survey designated	By whom surveyed	Contract		Amt. Surveyed		When Surveyed
		No.	Date	Miles	Chains/links	
Subdivisions	Thompson & Chaplin	104	Apr. 16 th 1864	4.0	00 17	May 31 st 1864
Total Acres	14054.97					
	Whitaker & Johnson	530	April 1, 1879	2.0	01 26	Comm. June 12, 1879 Comp. " 18 "

The above map of the Survey of Subdivisional lines in T. 9 S. R. 39 East, Will. Mer. is strictly conformable to the survey and field notes thereof on file in this office, which have been examined and approved by the Surveyor General's Office, Portland, Oregon, Oct. 24, 1884.

W. J. Pease
 Sur. Gen. of Oreg.