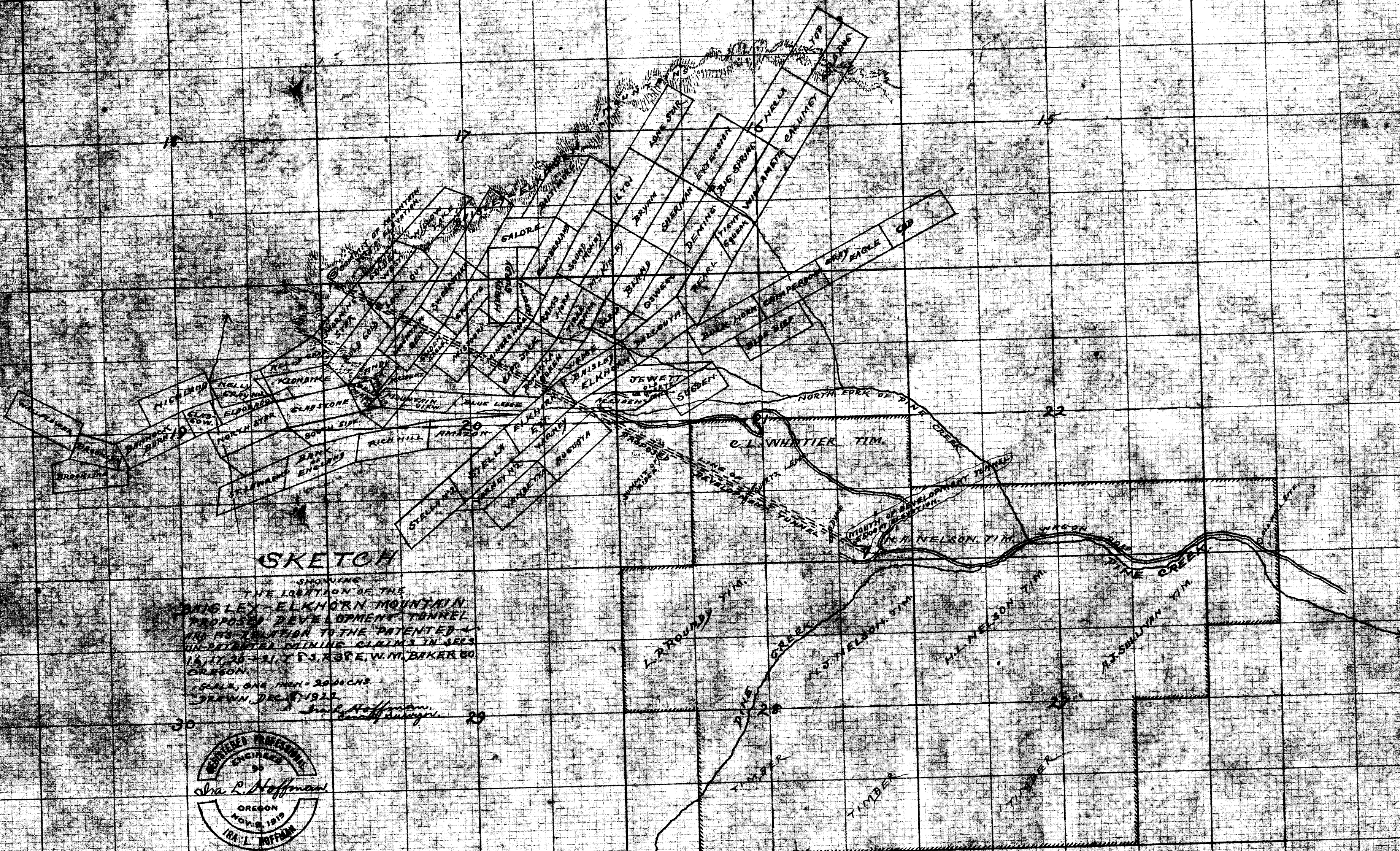


T8S R38E. W.M. ORE



**SKETCH**

SHOWING  
THE LOCATION OF THE  
PROPOSED DEVELOPMENT TUNNEL  
AND ITS RELATION TO THE PATENTED &  
UNPATENTED MINING CLAIMS IN SECS  
18, 17, 20 - R1, T8S, R38E, W.M. BAKER CO  
OREGON.  
SCALE, ONE INCH = 200 FEET  
DRAWN DEC. 1922  
J. R. Hoffmann  
Surveyor



**VERTICAL SECTION**  
OF THE LINE OF THE  
PROPOSED  
BAISLEY-ELKHORN  
MOUNTAIN TUNNEL  
ALL ELEVATIONS TAKEN WITH  
AN ANEROID  
SCALE ONE INCH = 500 FT.

PROPOSED BAISLEY-ELKHORN MOUNTAIN DEVELOPMENT TUNNEL

