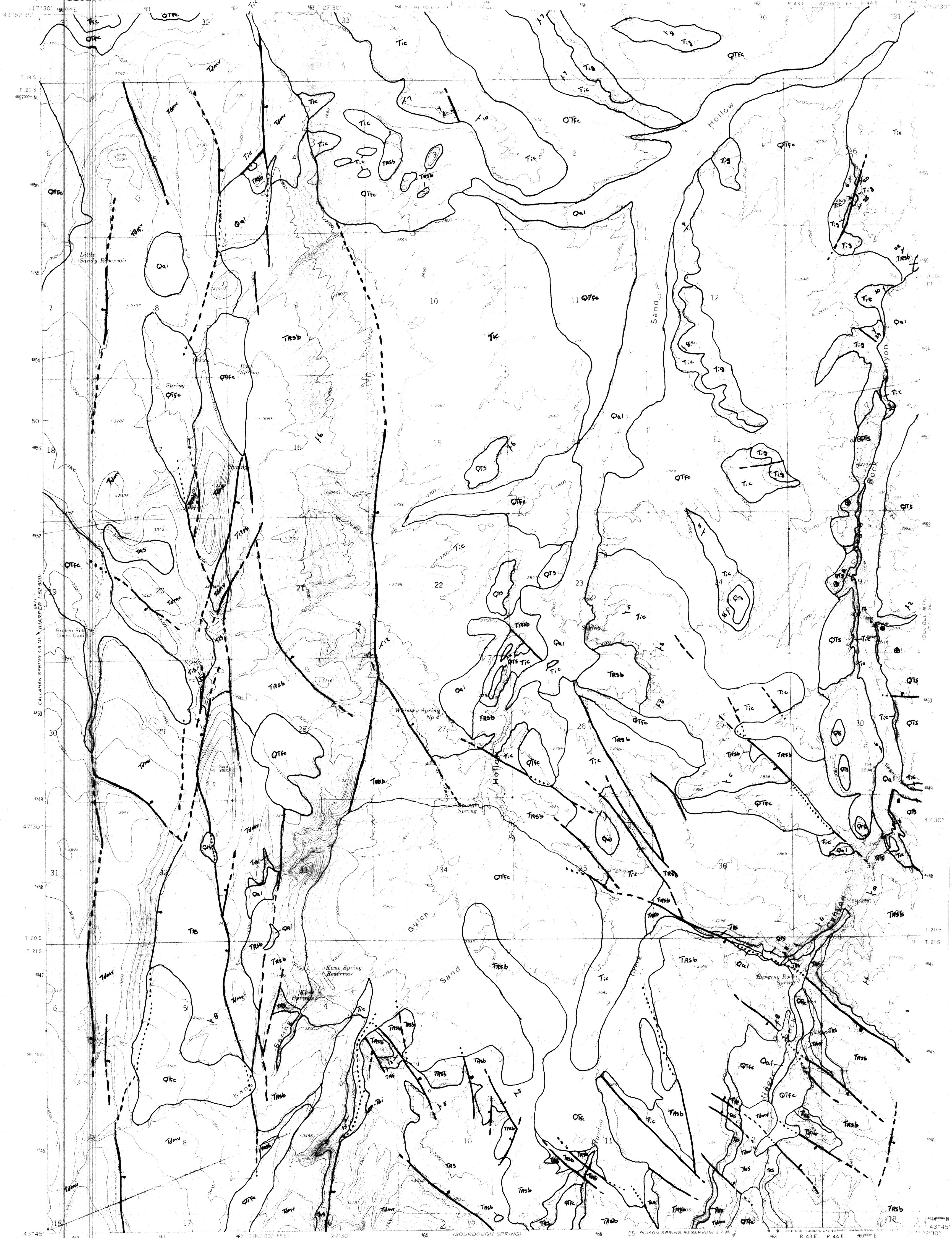
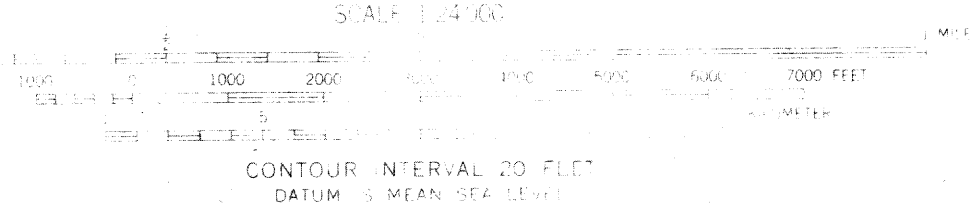


UNITED STATES
DEPARTMENT OF THE INTERIOR
GEOLOGICAL SURVEY

KANE SPRING GULCH QUADRANGLE
OREGON - MALHEUR CO.
7.5 MINUTE SERIES (TOPOGRAPHIC)



Mapped, edited, and published by the Geological Survey
Control by USGS and USC&GS
Topography by photogrammetric methods from aerial
photographs taken 1966. Field checked 1967
Polyconic projection. 1927 North American datum.
10,000 foot grid based on Oregon coordinate system
SOUTH ZONE
1:000-meter Universal Transverse Mercator grid ticks
zone B1, lower or blue
Contour dashed lines indicate selected fence lines



ROAD CLASSIFICATION
Unimproved dirt

KANE SPRING GULCH, OREG.
1481000 N - 1172730 W

FOR SALE BY U.S. GEOLOGICAL SURVEY, DENVER, COLORADO 80225 OR WASHINGTON, D.C. 20242
A FOLDER DESCRIBING TOPOGRAPHIC MAPS AND SYMBOLS IS AVAILABLE ON REQUEST

1967
AMS 2571 IV SW - SERIES V892