
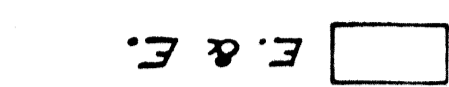

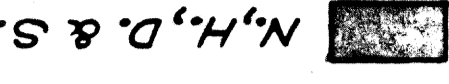




CRACKER CREEK MINING DISTRICT

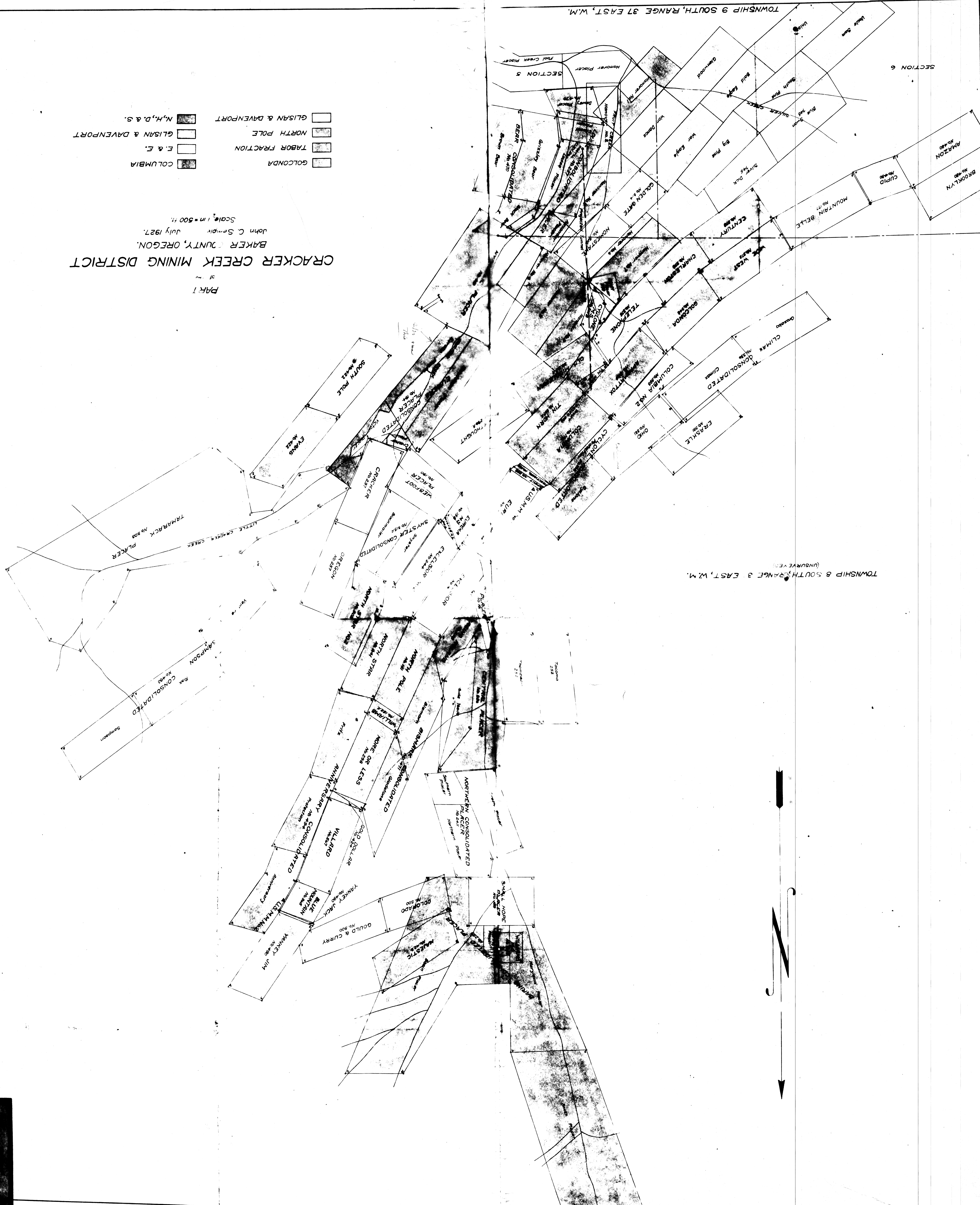
BAKER COUNTY, OREGON.

John C. Semple July 1927.

Scale, 1 in = 500 ft.

-  COLUMBIA
-  E. & C.
-  TABOR FRACTION
-  NORTH POLE
-  GLISAN & DAVENPORT
-  N.H., D. & S.

PAK 1



TOWNSHIP 8 SOUTH, RANGE 3 EAST, W.M. (UNSURE VER)

TOWNSHIP 9 SOUTH, RANGE 37 EAST, W.M.

SECTION 6

SECTION 5

SECTION 6

SECTION 5

SECTION 4

SECTION 3

SECTION 2

SECTION 1

SECTION 1

SECTION 2

SECTION 3

SECTION 4

SECTION 5

SECTION 6

SECTION 7

SECTION 8

SECTION 9

SECTION 10

SECTION 11

SECTION 12

SECTION 13

SECTION 14

SECTION 15

SECTION 16

SECTION 17

SECTION 18

SECTION 19

SECTION 20

SECTION 21

SECTION 22

SECTION 23

SECTION 24

SECTION 25

SECTION 26

SECTION 27

SECTION 28

SECTION 29

SECTION 30

SECTION 31

SECTION 32

SECTION 33

SECTION 34

SECTION 35

SECTION 36