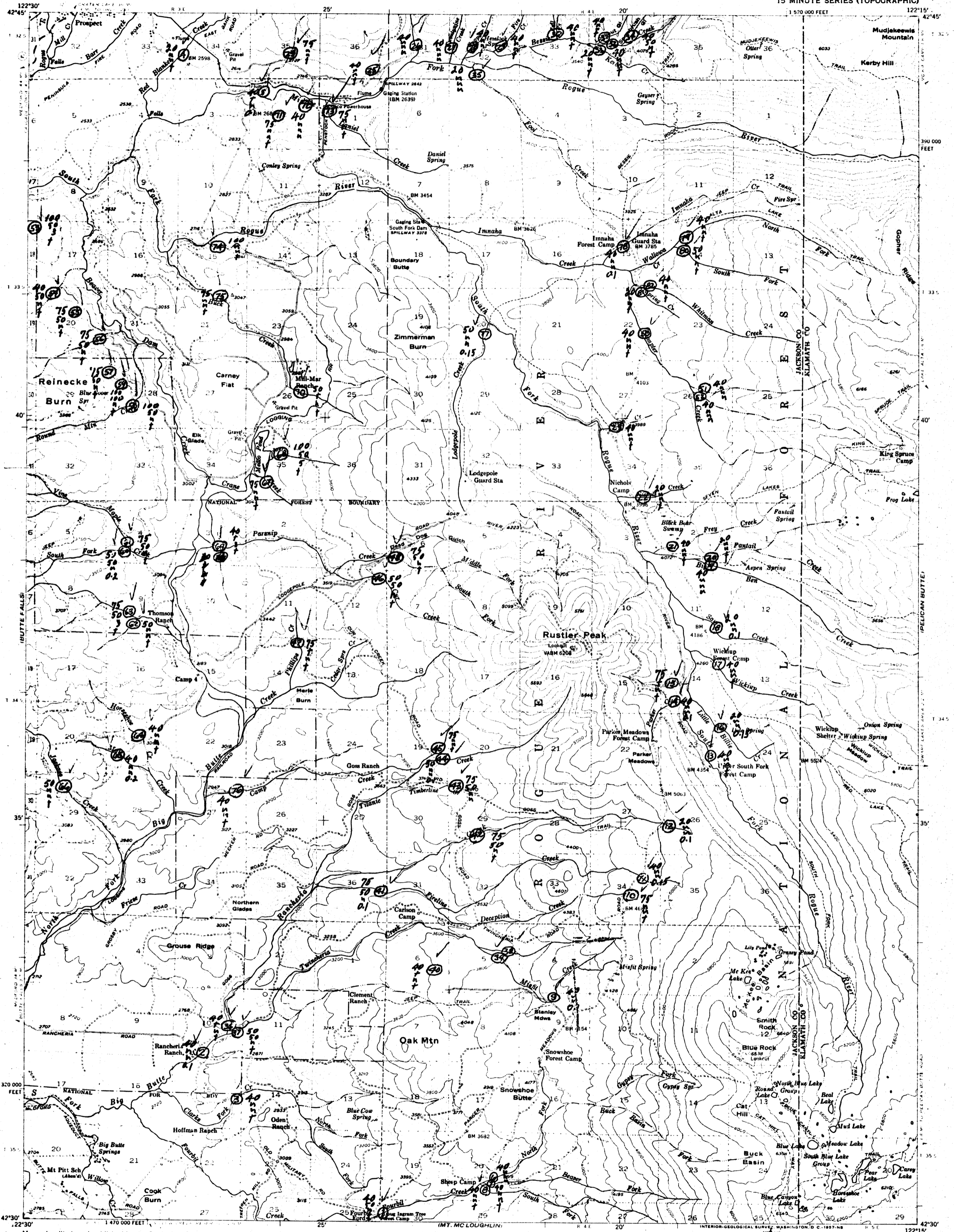
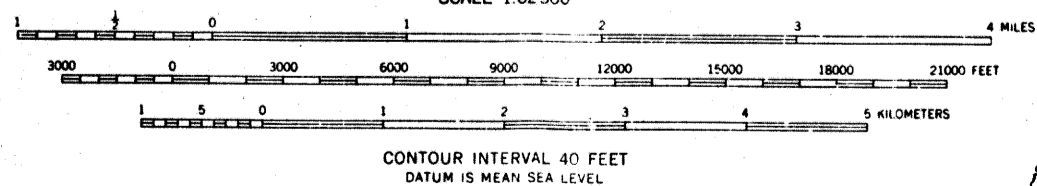


UNITED STATES
DEPARTMENT OF THE INTERIOR
GEOLOGICAL SURVEY

RUSTLER PEAK QUADRANGLE
OREGON
15 MINUTE SERIES (TOPOGRAPHIC)



Mapped, edited, and published by the Geological Survey
Control by USGS and USC&S
Topography from aerial photographs by multiplex methods
Aerial photographs taken 1953. Field check 1955
Polyconic projection. 1927 North American datum
10,000-foot grid based on Oregon coordinate system, south zone
Dashed land lines indicate approximate locations
Unchecked elevations are shown in brown



RUSTLER PEAK, OREG.
N4230-W12215/15
1955

FOR SALE BY U. S. GEOLOGICAL SURVEY, DENVER 2, COLORADO OR WASHINGTON 25, D. C.
A FOLDER DESCRIBING TOPOGRAPHIC MAPS AND SYMBOLS IS AVAILABLE ON REQUEST