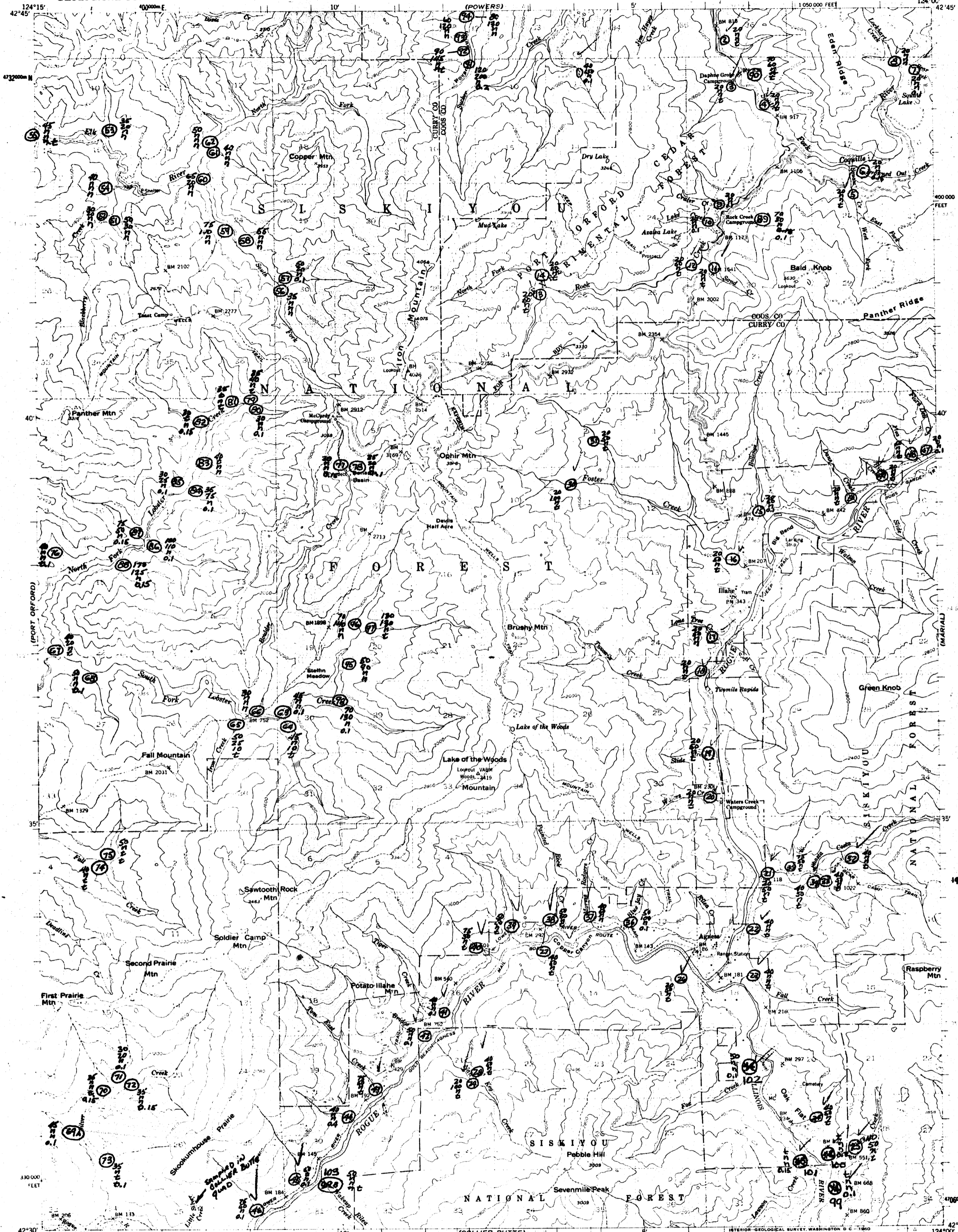


LAKEOS

UNITED STATES
DEPARTMENT OF THE INTERIOR
GEOLOGICAL SURVEY

AGNESS QUADRANGLE
OREGON
15 MINUTE SERIES (TOPOGRAPHIC)

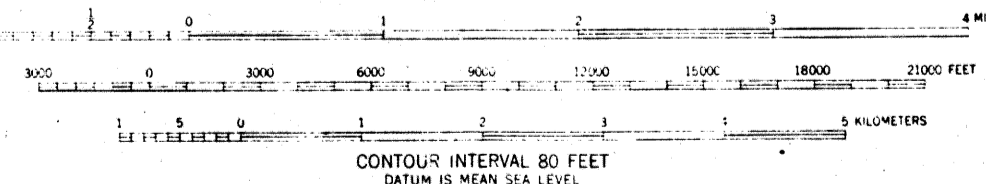
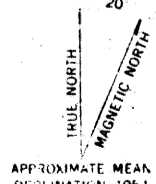
BONE MOUNTAIN



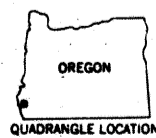
Handwritten note:
Cu
Zn
Mo
Hg
corrected 6/15/54
1945 data plotted 7/6/54

GOLD BEACH

Mapped, edited, and published by the Geological Survey
Control by USGS and USC&GS
Topograph: from aerial photographs by multiple methods
Aerial photographs taken 1952. Field check 1954
Polyconic projection. 1927 North American datum
10,000-foot grid based on Oregon coordinate system, south zone
Dashed land lines indicate approximate locations
Unchecked elevations are shown in brown
1000-meter Universal Transverse Mercator grid ticks,
zone 10, shown in blue



CONTOUR INTERVAL 80 FEET
DATUM IS MEAN SEA LEVEL



ROAD CLASSIFICATION
Light duty
Unimproved dirt

AGNESS, OREG.
N4230-W12400/15
1954

FOR SALE BY U. S. GEOLOGICAL SURVEY, DENVER 25, COLORADO OR WASHINGTON 25, D. C.
A FOLDER DESCRIBING TOPOGRAPHIC MAPS AND SYMBOLS IS AVAILABLE ON REQUEST