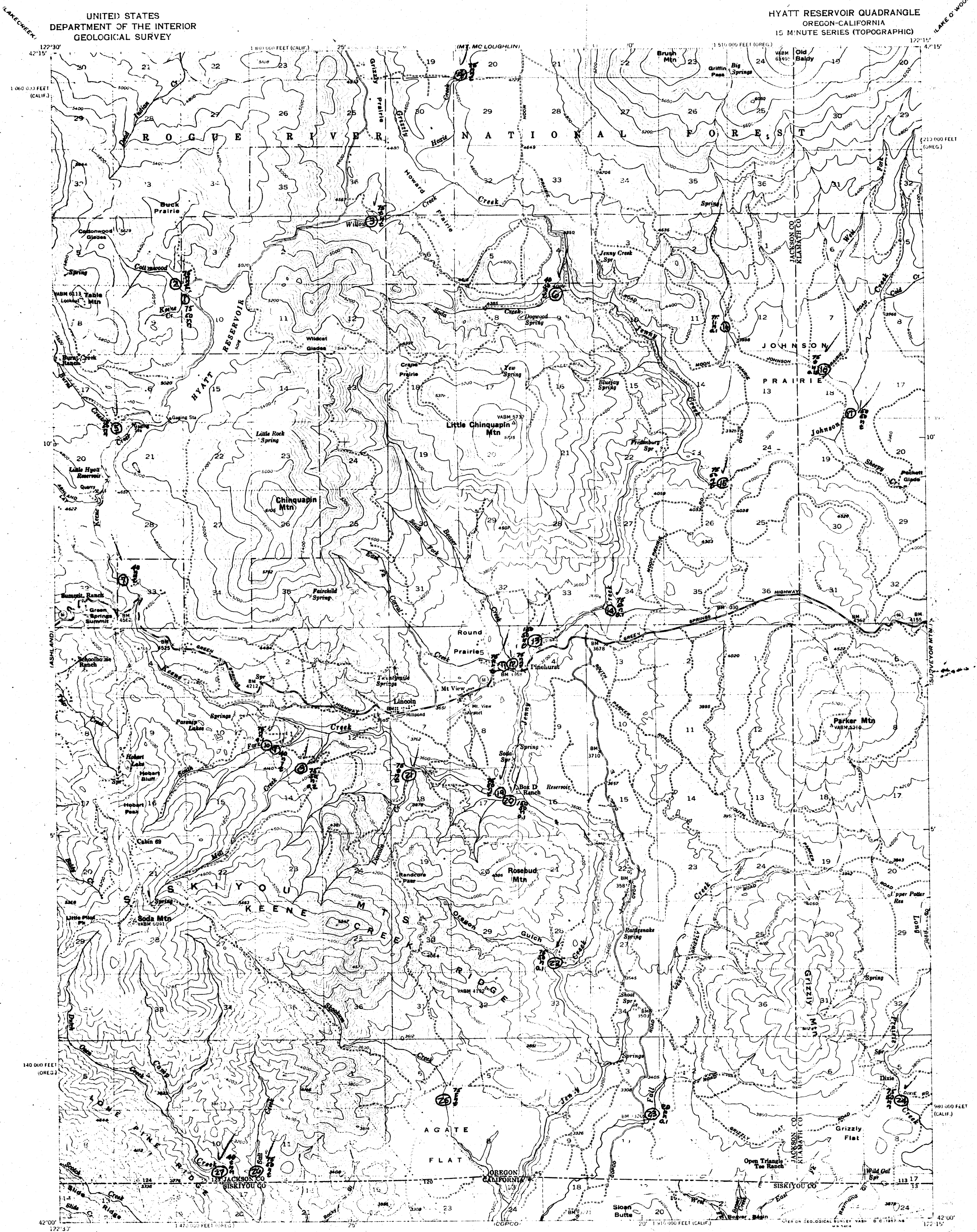
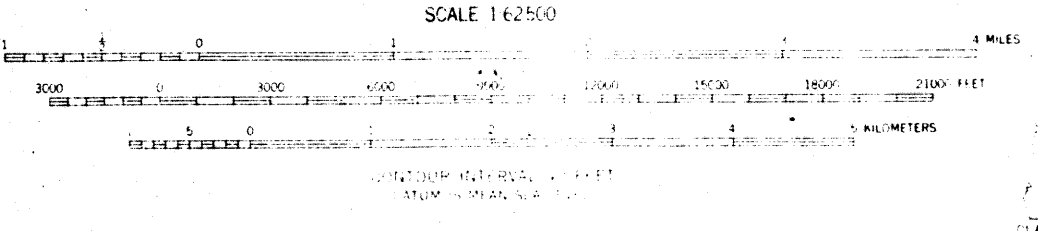


UNITED STATES
DEPARTMENT OF THE INTERIOR
GEOLOGICAL SURVEY

HYATT RESERVOIR QUADRANGLE
OREGON-CALIFORNIA
15 MINUTE SERIES (TOPOGRAPHIC)



Map compiled, edited, and published by the Geological Survey
Compiled by USGS and USCGS
Topography from aerial photographs by multiple methods
Aerial photography taken 1953. Field check 1955
Elevation datum 1929 North American datum
4215 UTM zone 18N datum system, zone 18N
Distances in miles are approximate locations
Units and abbreviations are as shown on map



ROAD CLASSIFICATION

Heavy duty	Light duty
Medium duty	Unimproved dirt
U.S. Route	State Route

THIS MAP COMPLETES WITH NATIONAL MAP TO BOUNDARY STANDARDS
FOR SALE BY U.S. GEOLOGICAL SURVEY DENVER 2, COLORADO OR WASHINGTON 25, D. C.
A FOLDER DESCRIBING TOPOGRAPHIC MAPS AND SYMBOLS IS AVAILABLE ON REQUEST

HYATT RESERVOIR, OREG-CALIF
H4200-W12215-15
1955