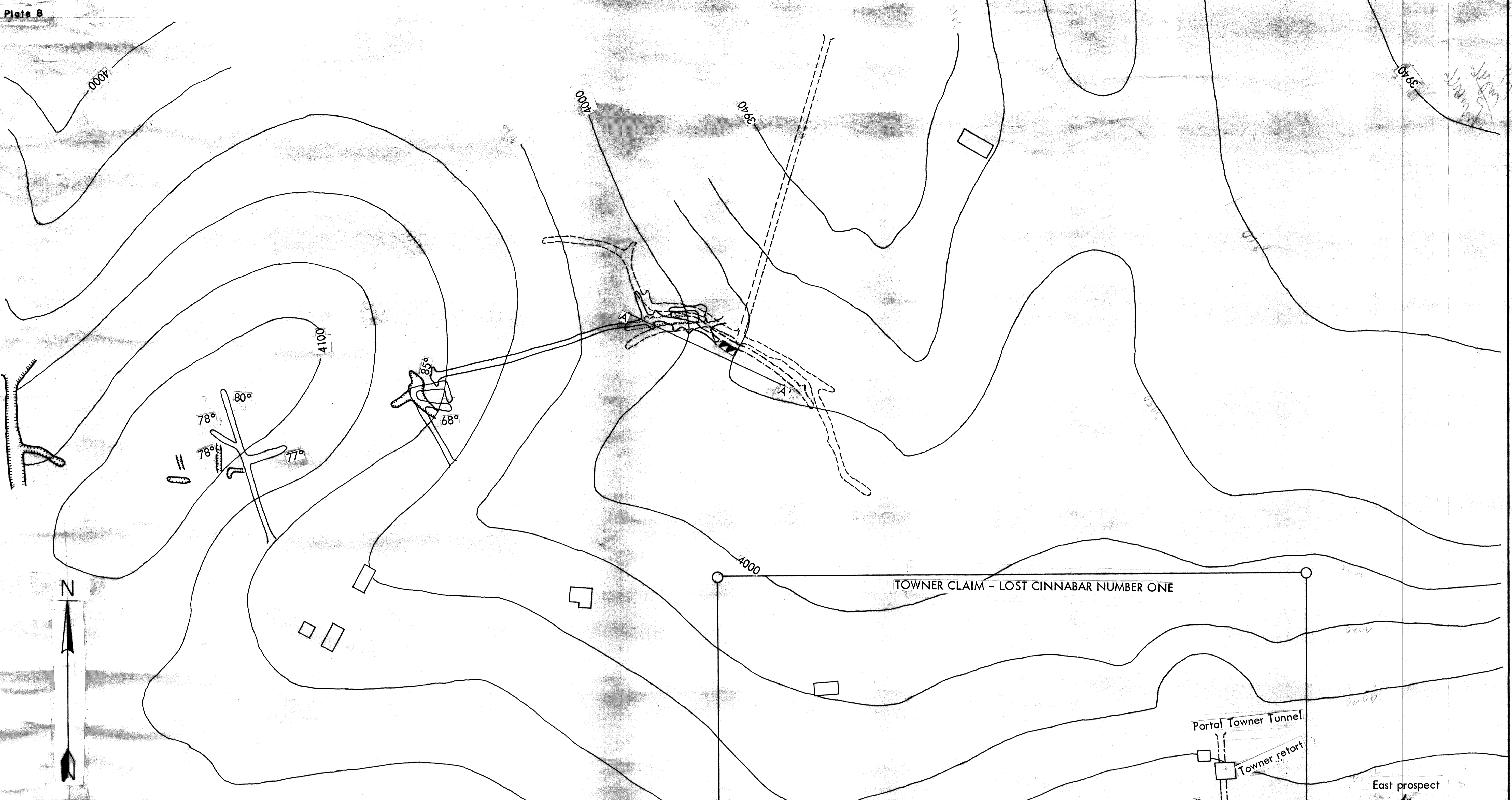


ATC-5

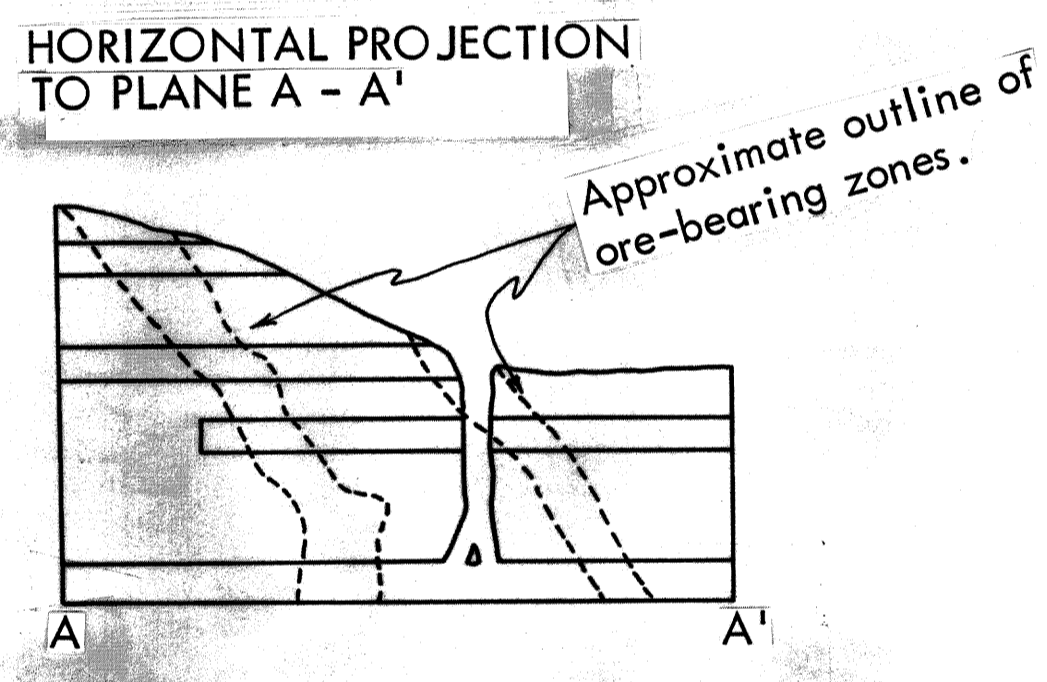
Wagner
Len Ramp
John Allen



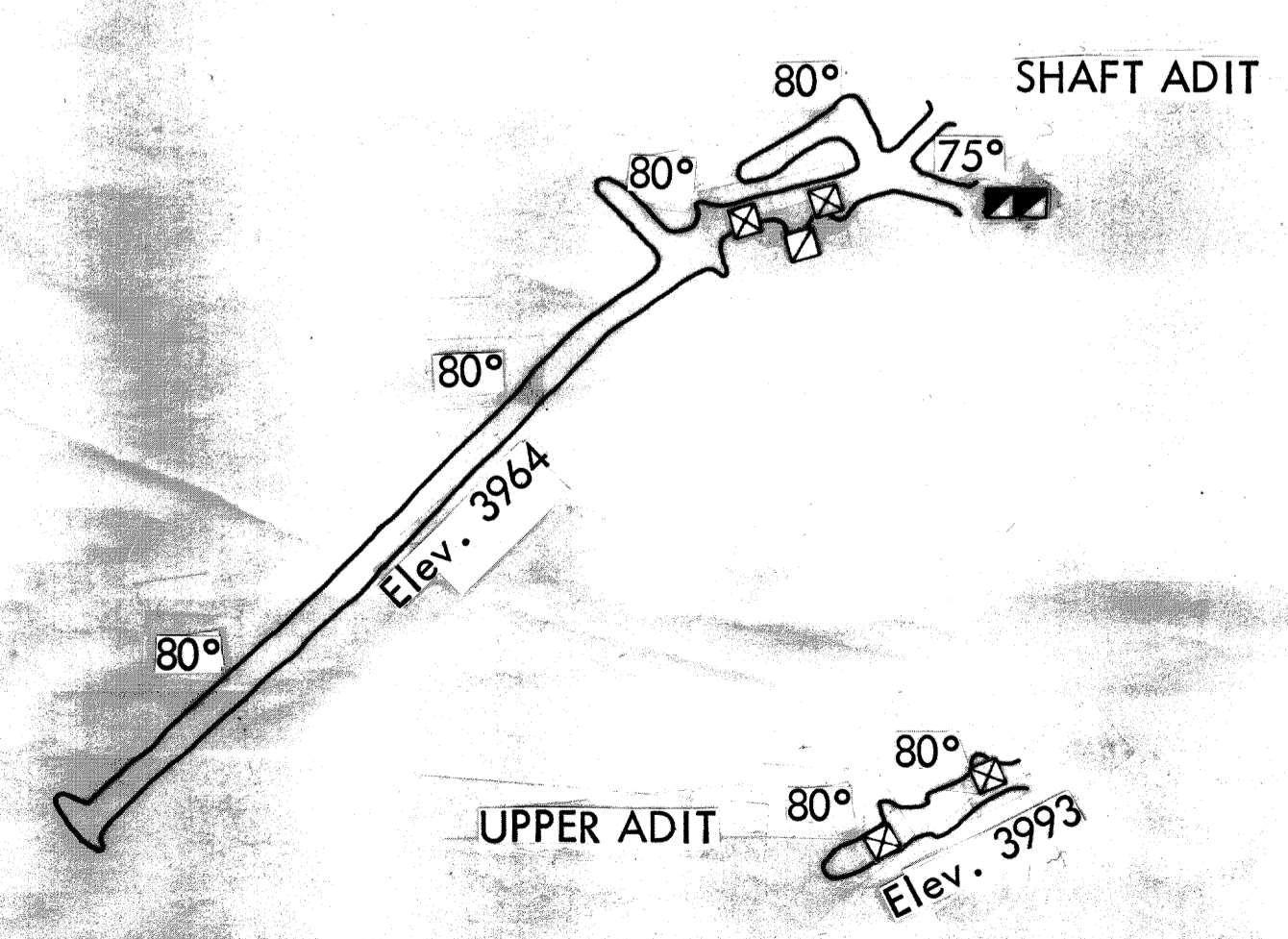
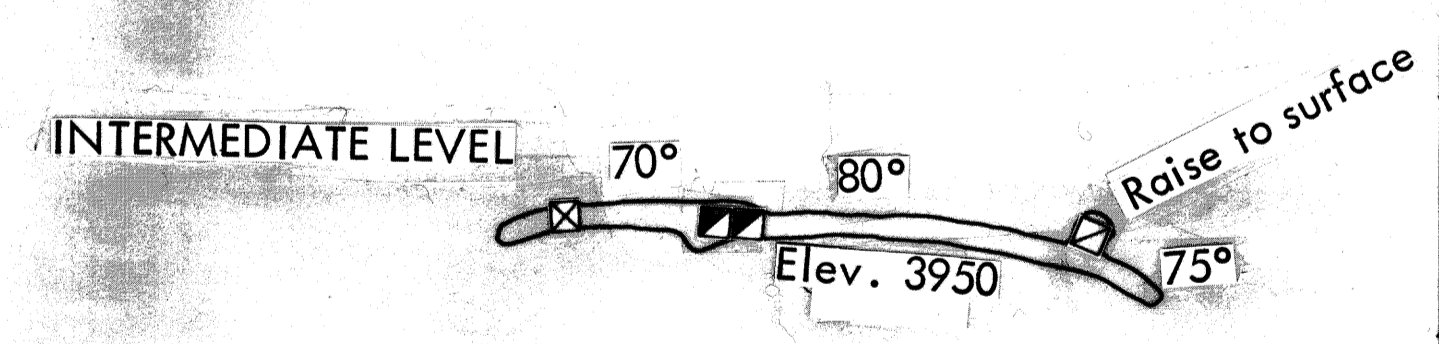
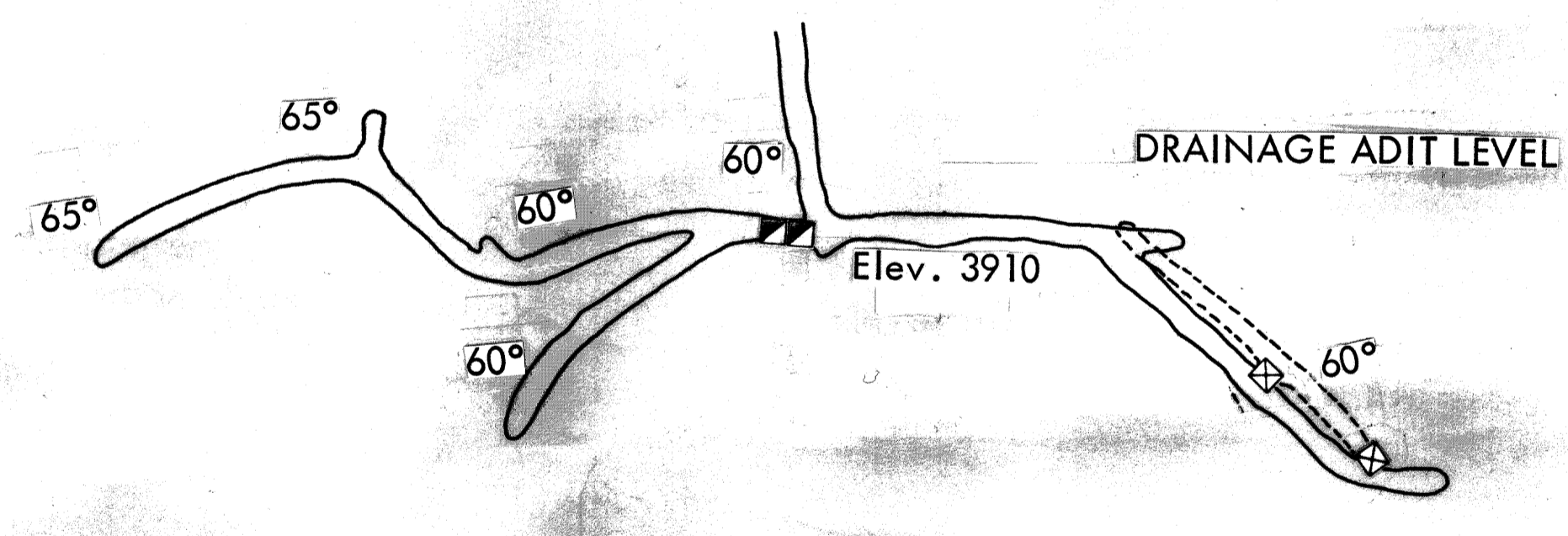
EXPLANATION

- FAULTS
- SURFACE CUTS AND TRENCHES
- SHAFT
- RAISE
- ⊠ WINZE
- BUILDINGS

50 25 0 50 100 Feet



GEOLOGY OF INDIVIDUAL LEVELS, LOWER WORKINGS



Plan and Geology of Upper Workings Adapted from Stephenson (1941) after G. D. Bath and others

Plan and Geology of Lower Workings Compiled from Surveys by John Allen in 1941, N. S. Wagner and Len Ramp in 1956, and Howard Brooks and N. S. Wagner in 1958.

Topography Adapted from Stephenson (1941) after Ford Young and G. D. Bath.

