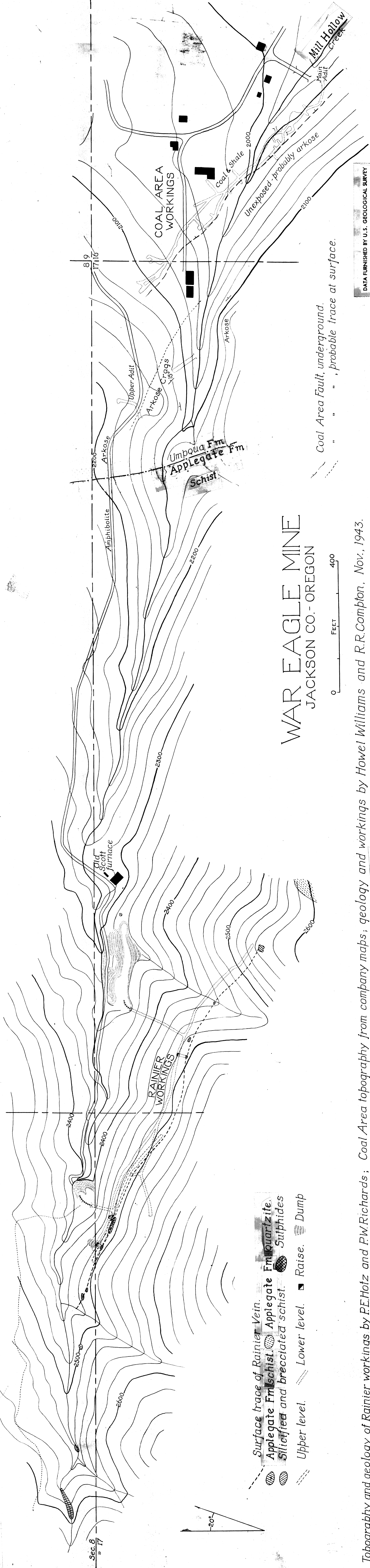


Plate 5



WAR EAGLE MINE

JACKSON CO.-OREGON

DATA FURNISHED BY U.S. GEOLOGICAL SURVEY

Topography and geology of Rainier workings by P.E.Hotz and P.W.Richards; Coal Area topography from company maps; geology and workings by Howel Williams and R.R.Compton, Nov., 1943.