

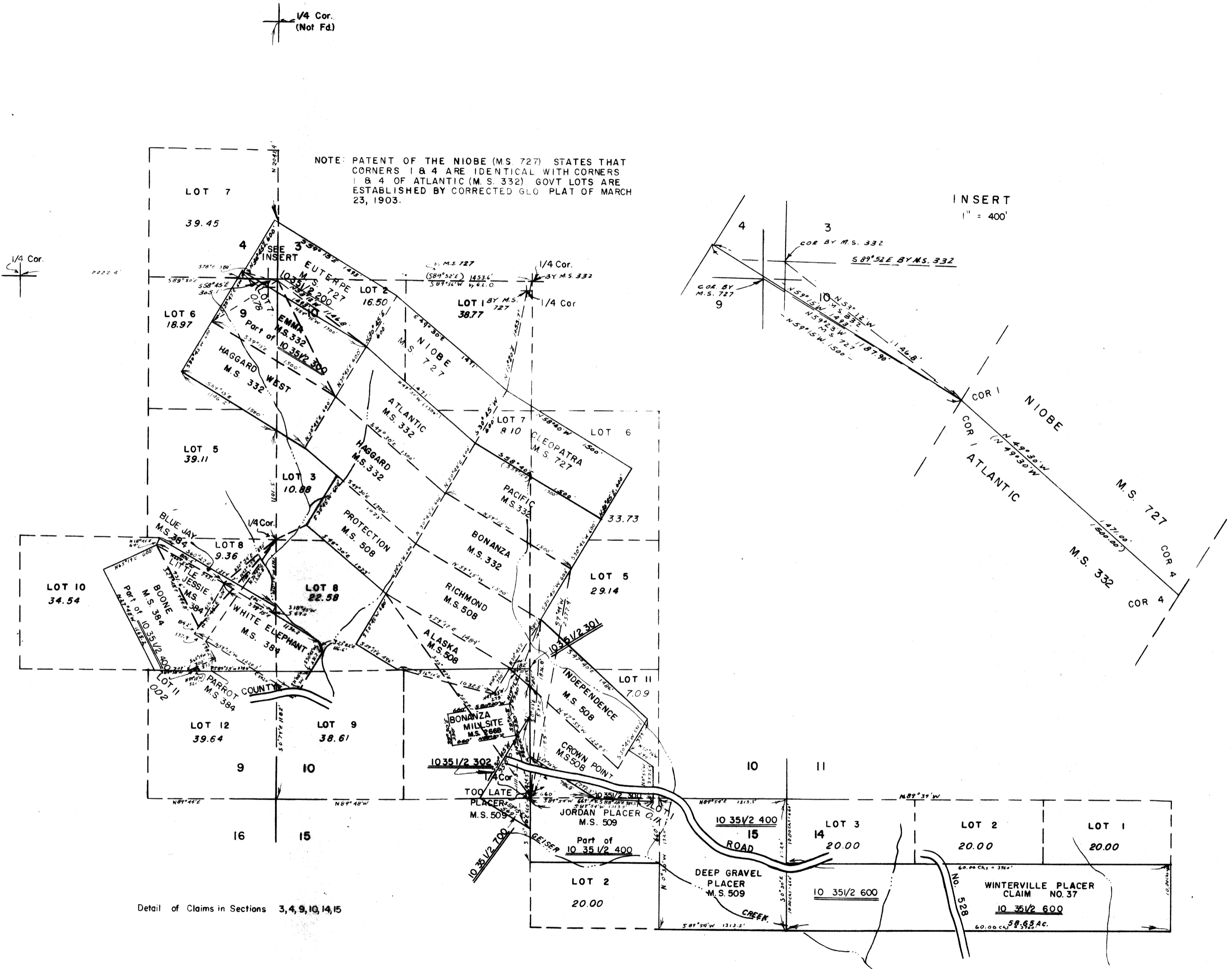
THIS MAP WAS PREPARED FOR ASSESSMENT PURPOSE ONLY.

MINING CLAIMS T10S R351/2E W.M. BAKER COUNTY

1" = 800'

10 351/2 DETAIL SHEET

REFER TO 10 351/2 FOR LOCATION & TAX LOTTING



Detail of Claims in Sections 3, 4, 9, 10, 14, 15