

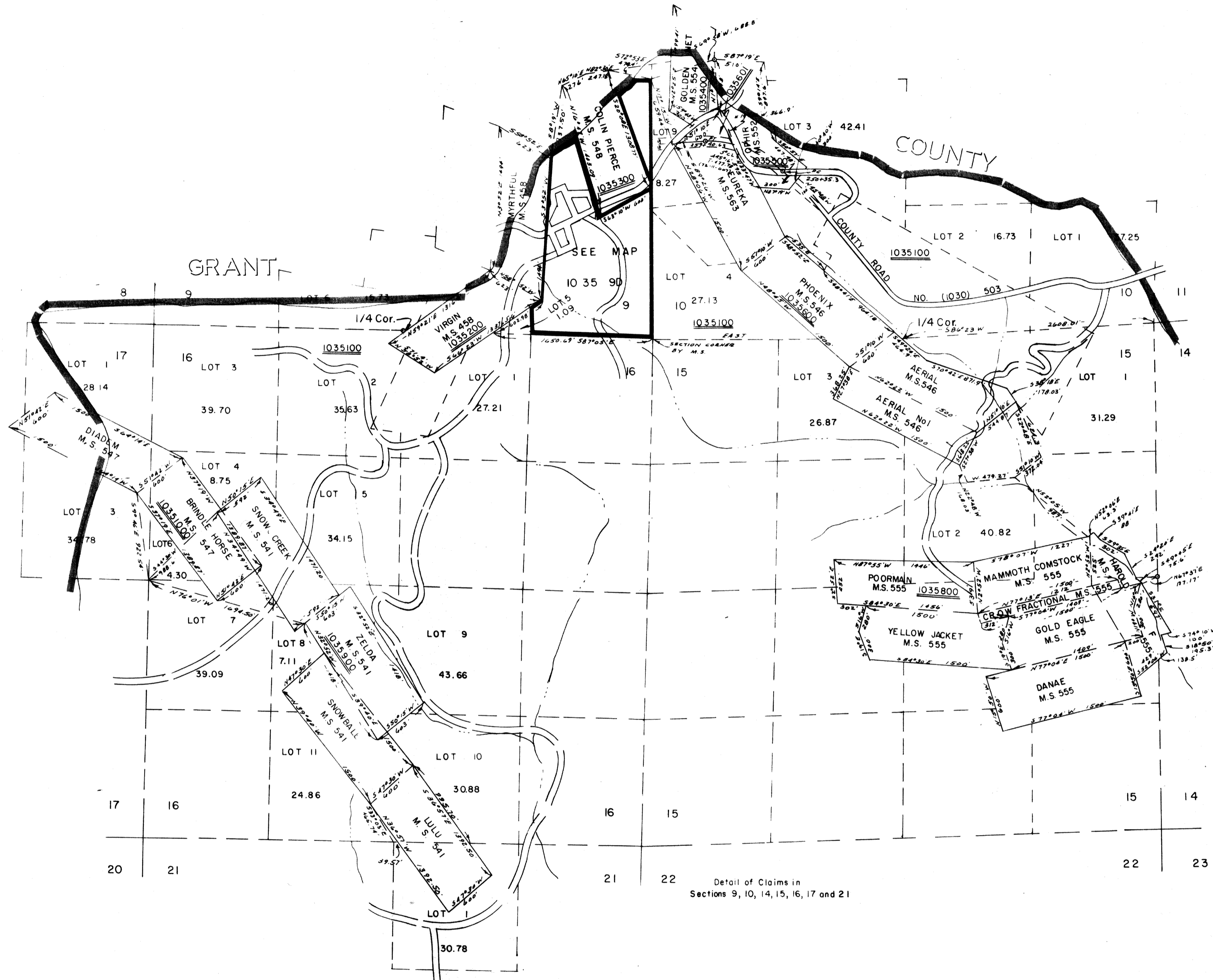
THIS MAP WAS PREPARED FOR ASSESSMENT PURPOSE ONLY.

MINING CLAIMS TIOS R35E. WM. BAKER COUNTY

1" = 800'

10 35 DETAIL SHEET

REFER TO 10 35 FOR LOCATION & TAX LOTTING



NOTE: ROAD Nos. IN PRESENTS IS THE OLD CO. RD. NO. PRIOR TO COUNTY COURT ORDER OF 11/17 (71-44-157)

Detail of Claims in Sections 9, 10, 14, 15, 16, 17 and 21

C. Howard Baker Esq. 8/27/82