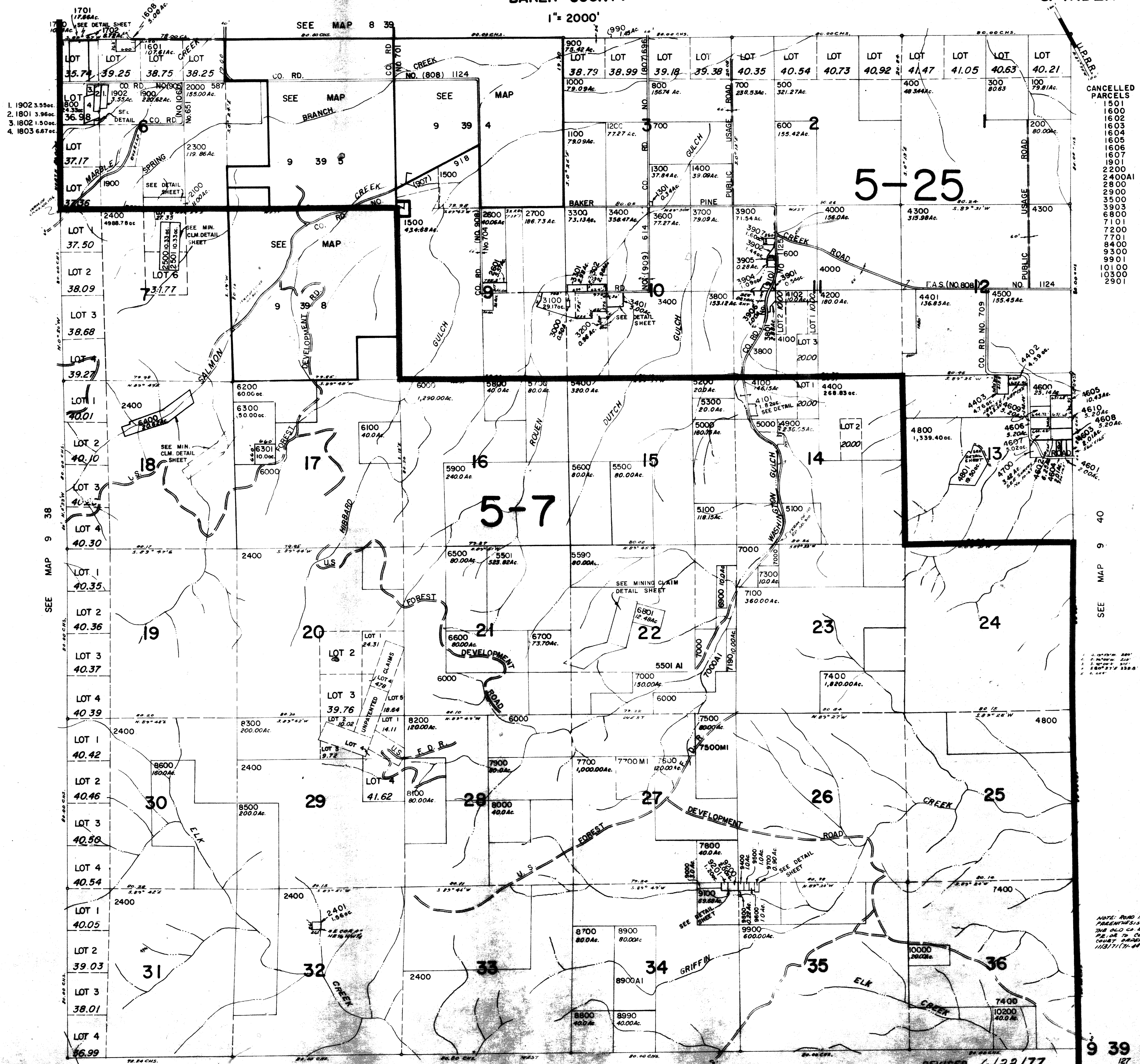


T 9 S. R 39 E W. M.
BAKER COUNTY

1" = 2000'



- 1. 1902 3.55ac.
- 2. 1801 3.96ac.
- 3. 1802 1.50ac.
- 4. 1803 6.87ac.

- CANCELED PARCELS
- 1501
 - 1600
 - 1602
 - 1603
 - 1604
 - 1605
 - 1606
 - 1607
 - 1901
 - 2200
 - 2400A1
 - 2800
 - 2900
 - 3500
 - 3903
 - 6800
 - 7101
 - 7200
 - 7701
 - 8400
 - 9300
 - 9901
 - 10100
 - 10300
 - 2901

SEE MAP 9 40

REVISED 6/22/77

SEE MAP 10 39

NOTE: ROAD NO. 14
PARENTHESES IS
THE OLD CO. RD. NO.
PR. OF 75 COUNTY
CHART PARCEL NO.
115171(75-47-157)