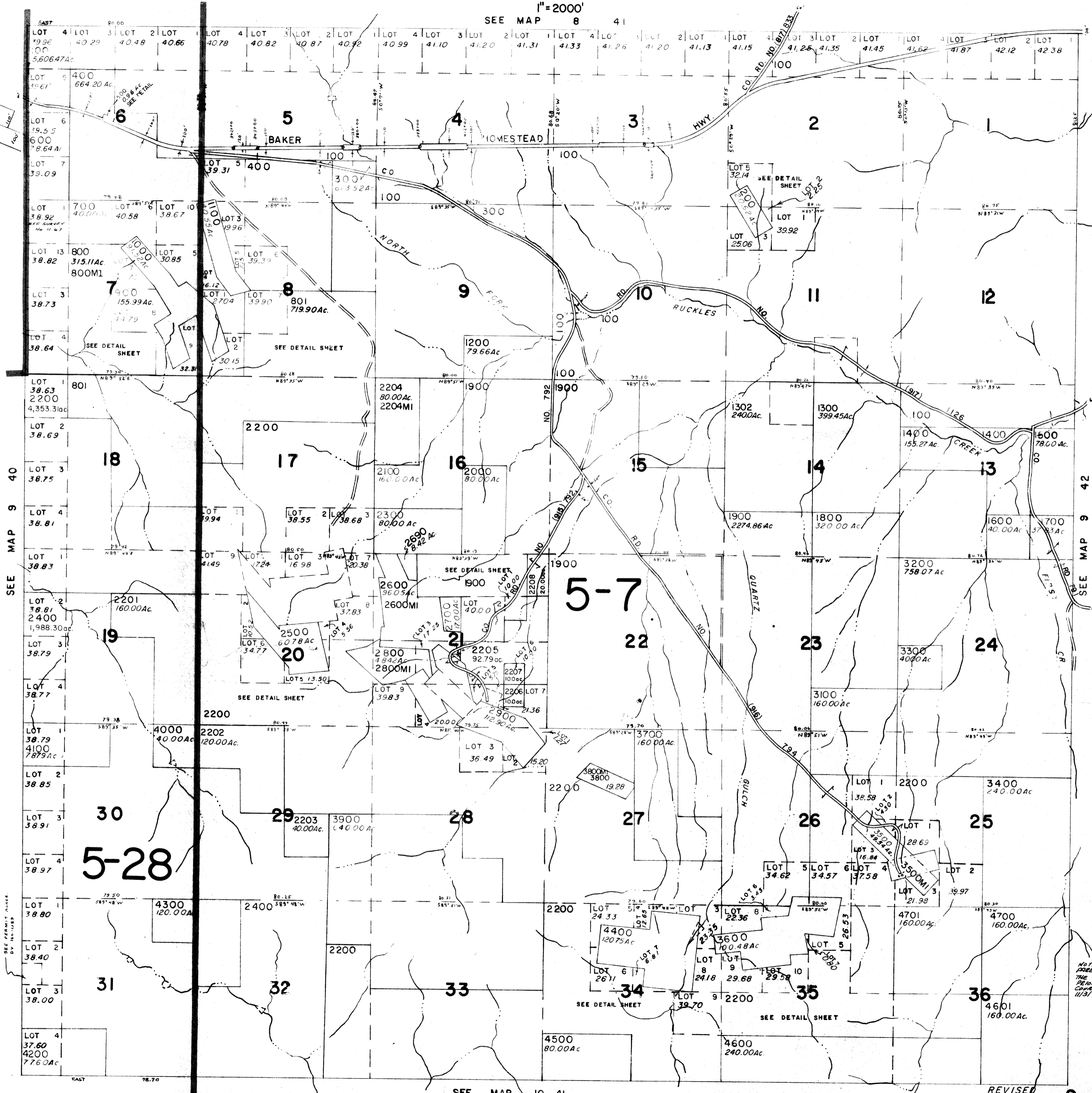


BAKER COUNTY

1" = 2000'

SEE MAP 8 41

DETAIL SEC. 6
TL 500
1" = 400'



CANCELLED
TL 3000
TL 101
TL 1301

SEE MAP 9 40

SEE MAP 9 42

SEE PERMIT MADE
BY 18-1085

NOTE: ROAD NO. 14
PARENTHESES ARE
THE OLD CO. RD. NO.
BEFORE THE COUNTY
CHANGED TO STATE OF
11/31/71 (71-44-157)

SEE MAP 10 41

REVISED
2/14/79