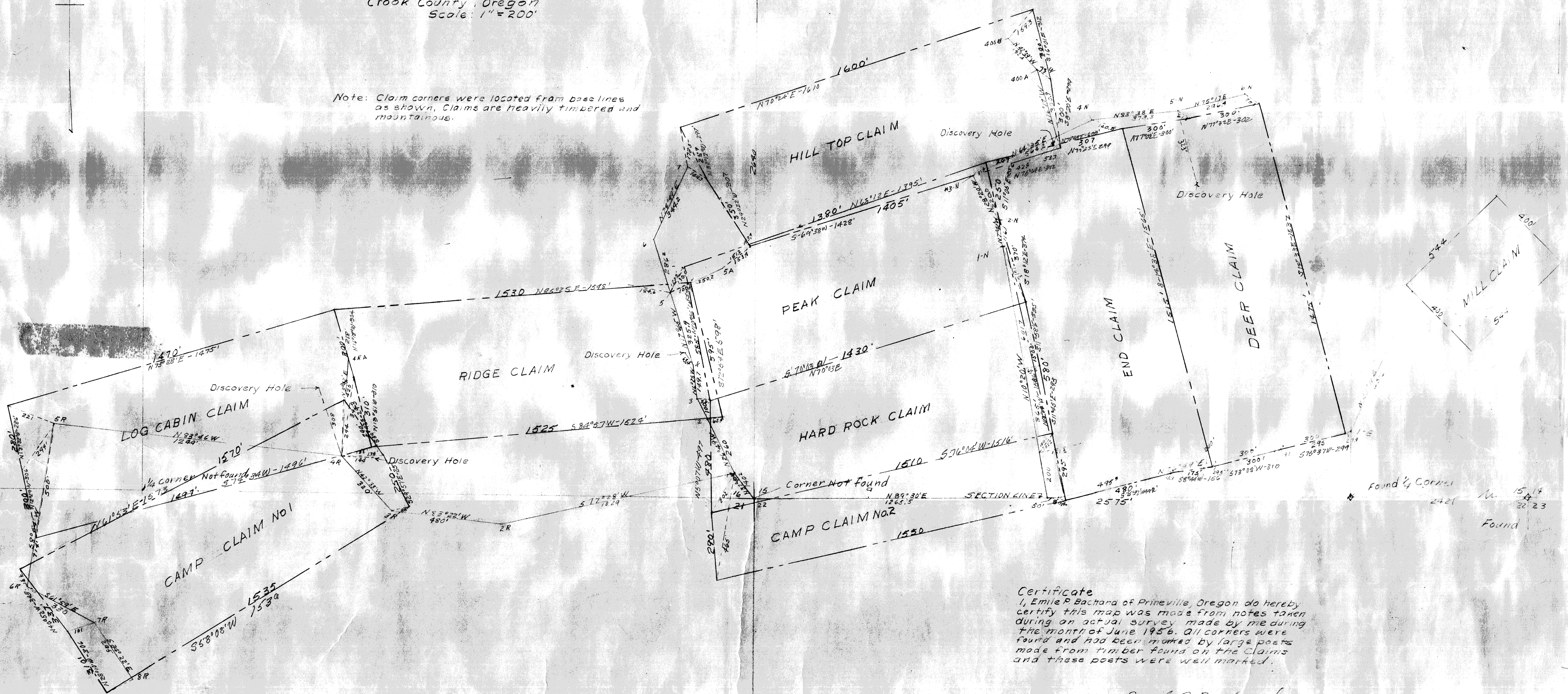


# NEW AMITY MINE CLAIMS

Township 14 South, Range 20 East, W.M.  
Crook County, Oregon  
Scale: 1"=200'

Note: Claim corners were located from base lines as shown. Claims are heavily timbered and mountainous.

Approx. 1/4 corner found



Certificate  
I, Emile P. Bachard of Prineville, Oregon do hereby certify this map was made from notes taken during an actual survey made by me during the month of June 1956. All corners were found and had been marked by large posts made from timber found on the claims and these posts were well marked.

Emile P. Bachard  
Consulting Engineer  
Prineville, Oregon

Found 1/4 corner  
2421  
Found  
15.14  
23.23