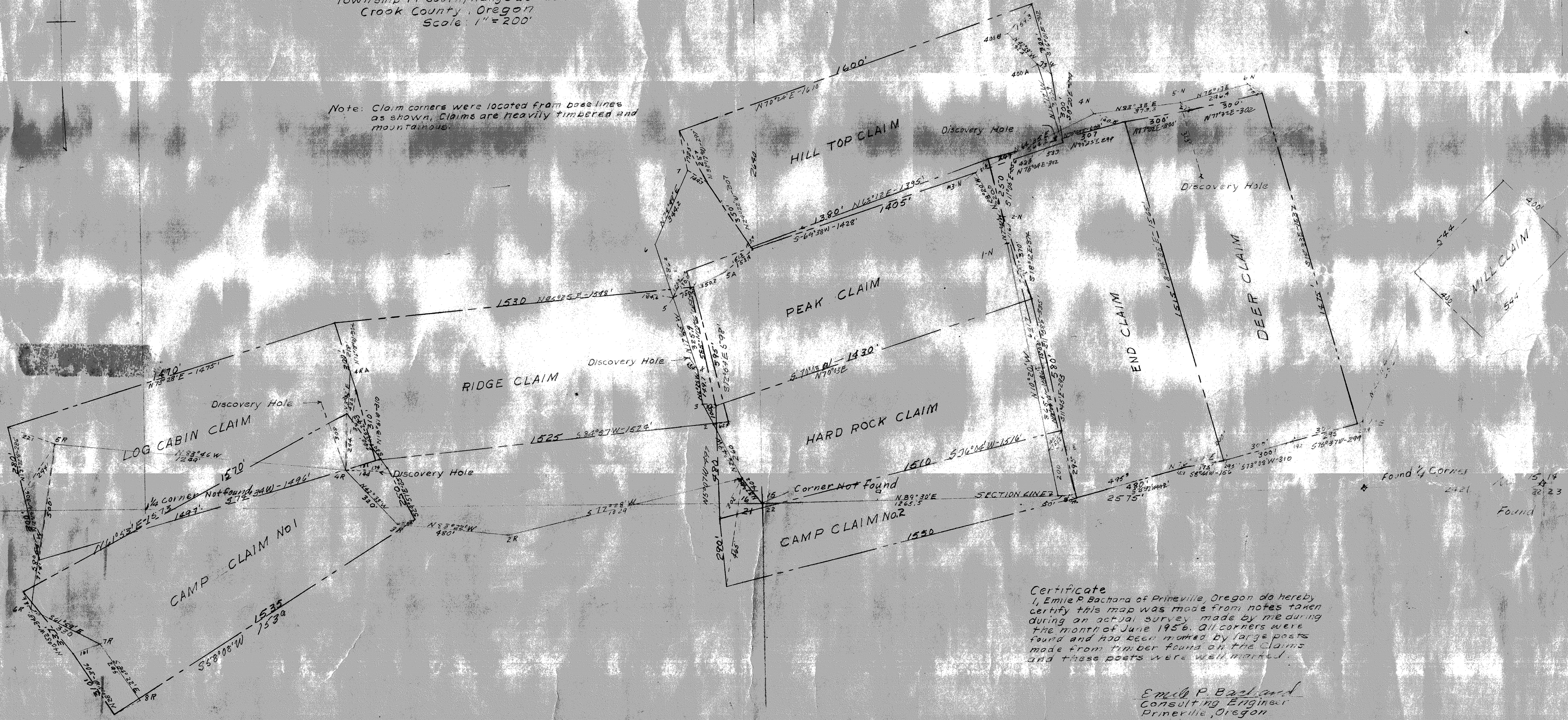




**NEW AMITY MINE CLAIMS**  
 Township 14 South, Range 20 East, W.M.  
 Crook County, Oregon  
 Scale: 1" = 200'

Note: Claim corners were located from base lines as shown. Claims are heavily timbered and mountainous.



Certificate  
 I, Emile P. Bachard of Prineville, Oregon do hereby certify this map was made from notes taken during an actual survey made by me during the month of June 1956. All corners were found and had been marked by large posts made from timber found on the claims and these posts were well marked.

Emile P. Bachard  
 Consulting Engineer  
 Prineville, Oregon

Approx. 1/4 corner found

Corner Not Found

Found 1/4 Corner

Found