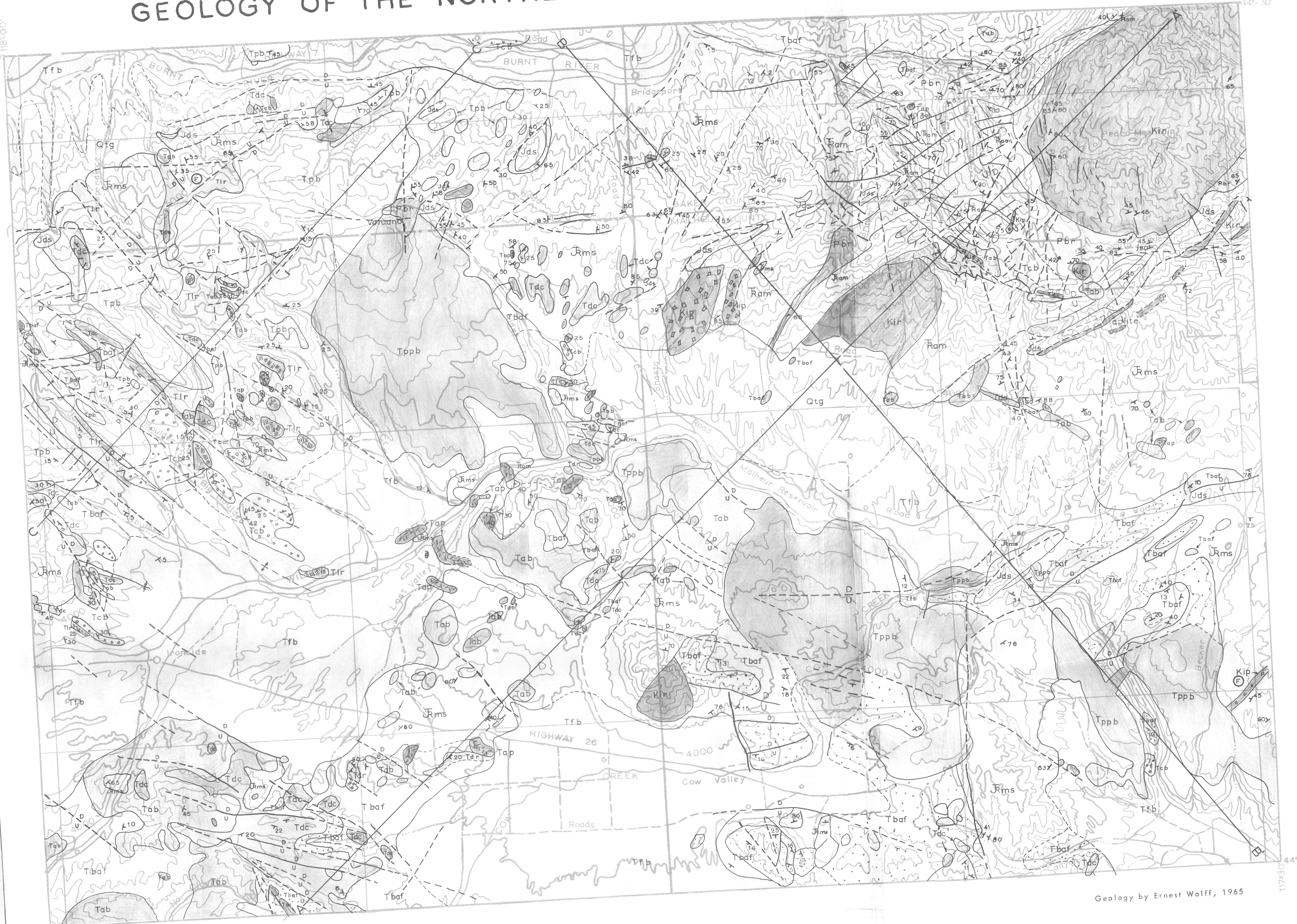


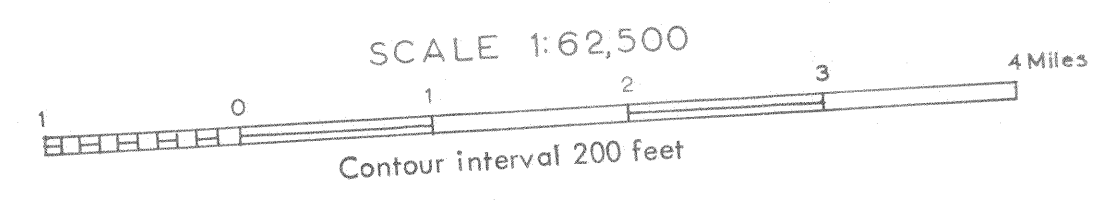
GEOLOGY OF THE NORTHERN HALF OF THE CAVINESS QUADRANGLE, OREGON-PLATE 1.



EXPLANATION

- | | | | |
|----------------|--------|---|--|
| Pliocene | Qtg | Terrace gravels | 20°
Contact, dashed where inexact
Strike and dip
Fault, dashed where inferred or inexact
Lineation Fossil |
| | Tppb | Plio-Pleistocene basalt | |
| | Tfb | Fine basin fillings | |
| Miocene | Tcb | Coarse basin fillings | Miocene volcanic sequence |
| | Tpb | Unit 5, Platy basalt | |
| | Tlr | Unit 4, Littlefield Rhyolite and siliceous volcaniclastic rocks | |
| | Tab | Unit 3, Aphanitic basalt and associated pyroclastic rocks | |
| Cretaceous | Tdc | Unit 2, Dinner Creek Welded Ash-Flow Tuff | Cretaceous |
| | Tbaf | Unit 1, Basal ash flows and associated sediments and basalts | |
| | Tap | Andesite porphyry, partially intrusive | |
| Jurassic | Jms | Mesozoic sedimentary and metasedimentary rocks | Jurassic |
| | Jds | Diapiric serpentines | |
| Lower Triassic | Pbr | Burnt River Schist | Lower Triassic |
| Permian (?) | Ram | Alpine mafic rocks | |
| | Kir | Cretaceous intrusive rocks | |
| | Kip | Cretaceous intrusive porphyry | |
| | Aplite | Intrusive Rocks | |

Base map enlarged from Army Map Service, Baker quadrangle, 1:250,000 scale



Geology by Ernest Wolff, 1965