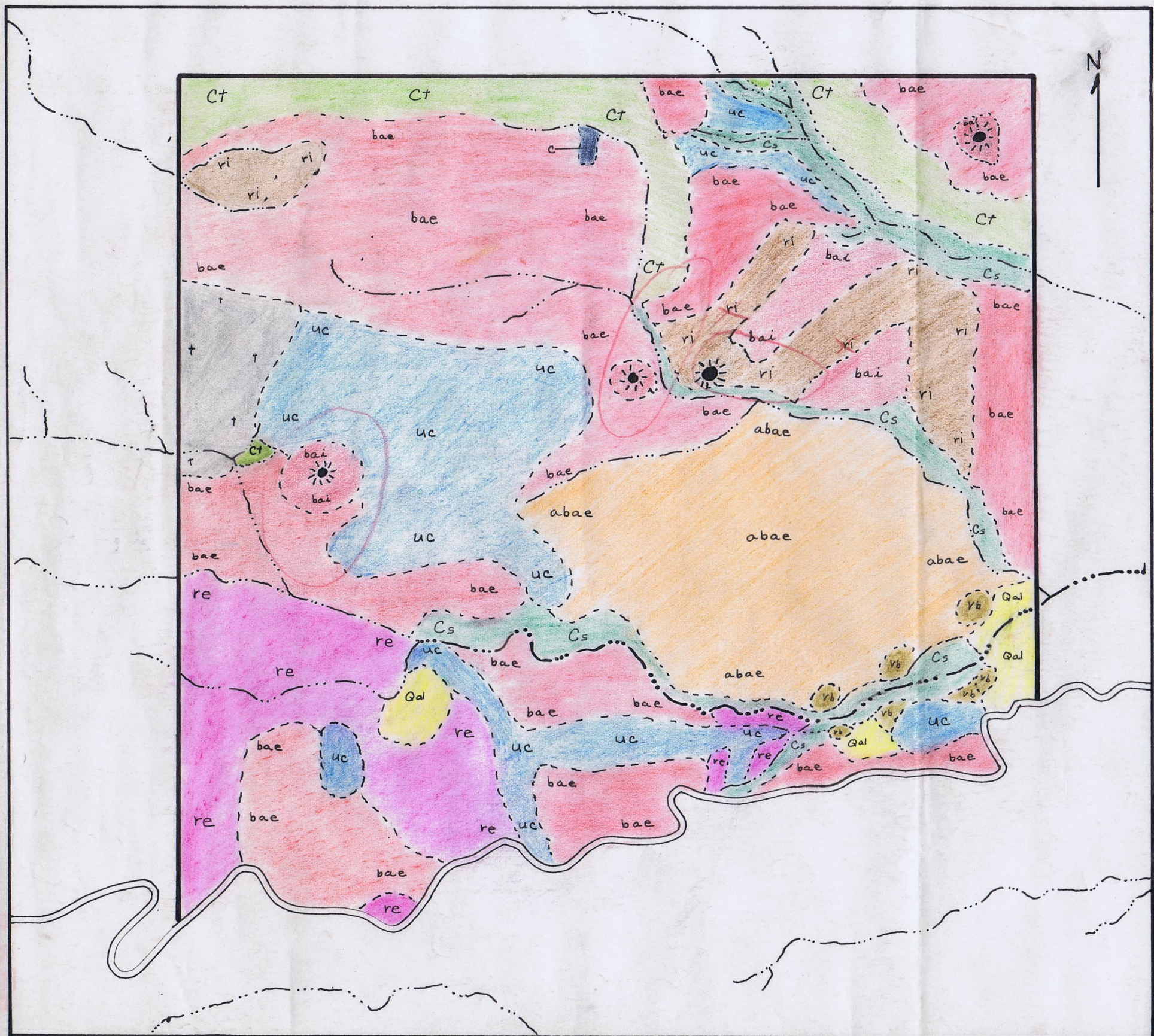


OF
AREA EAST OF HORSE HEAVEN MINE
 JEFFERSON COUNTY, OREGON



LEGEND

- Qal QUATERNARY ALLUVIUM
- t TUFF, LIGHT GRAY TO GREEN WITH VARIOUS INCLUSIONS
- bae EXTRUSIVE BASALT
- bai INTRUSIVE BASALT
- vb VOLCANIC BRECCIA
- abae EXTRUSIVE ANDESITIC BASALT, PLATY LIGHT GRAY TO DARK GREEN
- re RHYOLITE, EXTRUSIVE
- ri INTRUSIVE RHYOLITE
- uc UNCONFORMITY CLAY, FROM EROSION OF UPPER CLARNO
- c CONGLOMERATE
- Ct CLARNO TUFF
- Cs CLARNO SEDIMENTS

SYMBOLS

- ☀ VOLCANIC NECK
- CONTACT APPROX.
- STREAM, INTERMITTENT

TERTIARY

POST CLARNO

CLARNO