

# PLAN AND VERTICAL SECTION MAXWELL-HIGHLAND AND BAISLEY ELKHORN MINE

TOWNSHIP 8 SOUTH RANGE 37 + 38 EAST

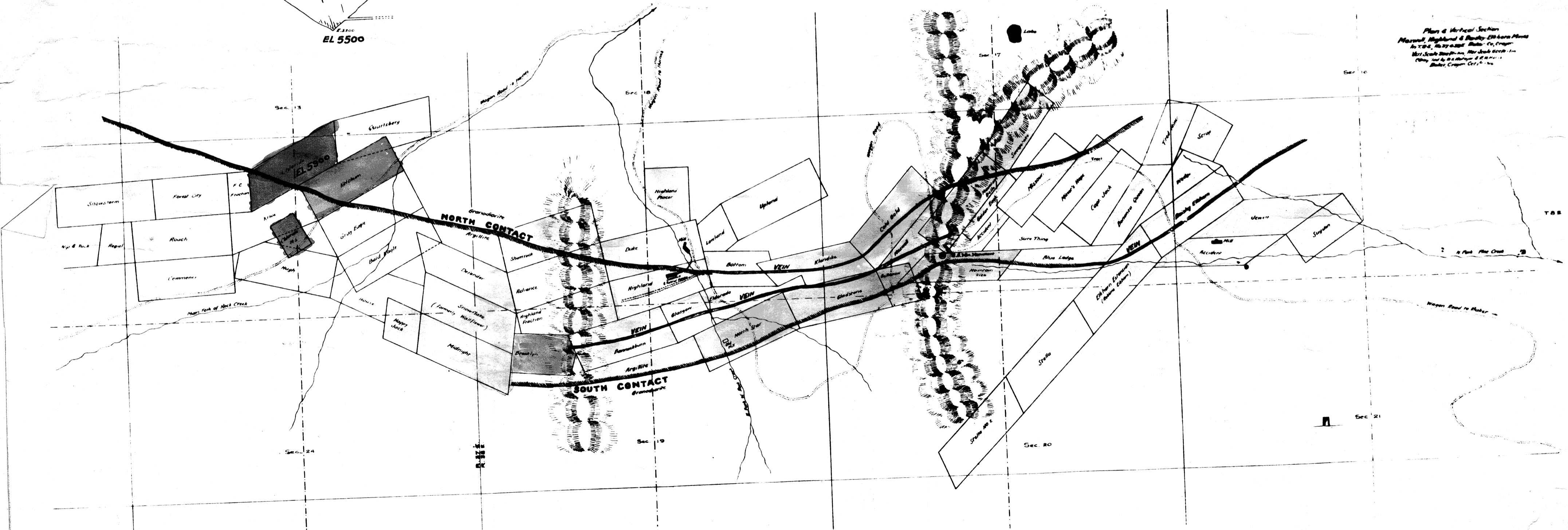
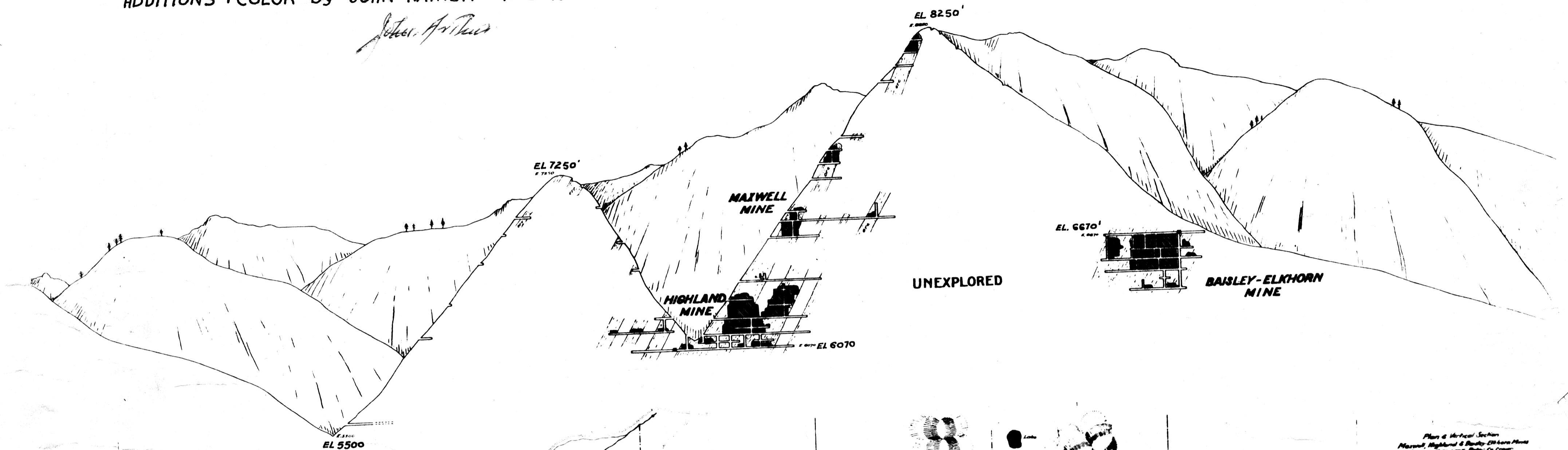
BAKER, OREGON

By G.E. METEGUR + Assistants --- Oct 1-1916

Vertical Scale -- 600 ft = 1"

ADDITIONS + COLOR By JOHN ARTHUR -- FEB 1954

*John Arthur*



*Plan & Vertical Section  
Maxwell, Highland & Baisley Elkhorn Mines  
In T8S, R37E, S8N, Baker Co, Oregon  
Metegur & Associates, Portland, Oregon  
1916, and by addition of John Arthur  
Baker, Oregon, Feb. 1954*

