

Q5 #

Buffalo Mine

Base Line



$\frac{410}{180} = 2.277$
 $\frac{190}{84} = 2.261$
 $\frac{230}{101} = 2.277$
 $\frac{200}{88} = 2.272$

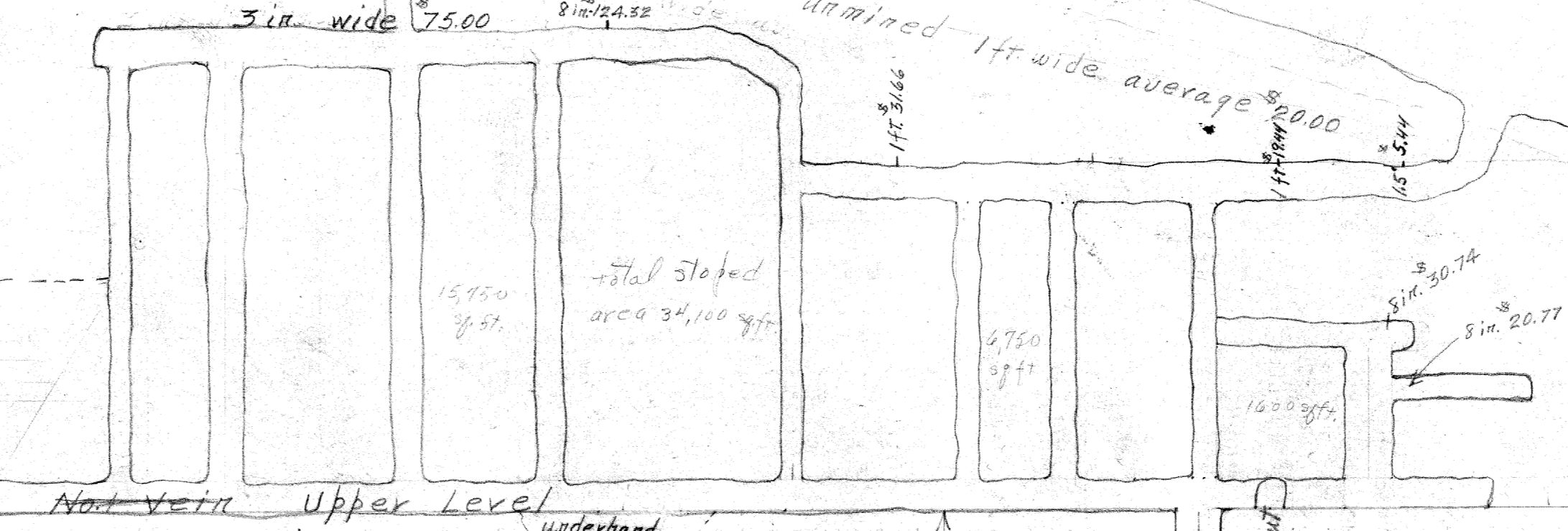
BUFFALO MONITOR
 Granite Dist. Baker Co. Ore
 Sketch of section on plane of
 Ho1 Vein.
 Scale - 1 in = 30 ft.
 Mar. 1922
 G.E. Stowell

92,000 sq. ft. area mined

Approximately 43,000 sq. ft. Unmined

3 in wide 75.00
 4,000 sq. ft. unmined 1 ft wide average 2000
 15,450 sq. ft. total stope area 34,100 sq. ft.
 4,750 sq. ft.

Bad air and rotten ladders prevented
 examination of this section.
 11,000 sq. ft.



12 5.44
 12 19.44
 11 21.60
 11 24.48
 11 18.92

12.300
 22.12.50
 12.300
 22.12.50

41-23-74