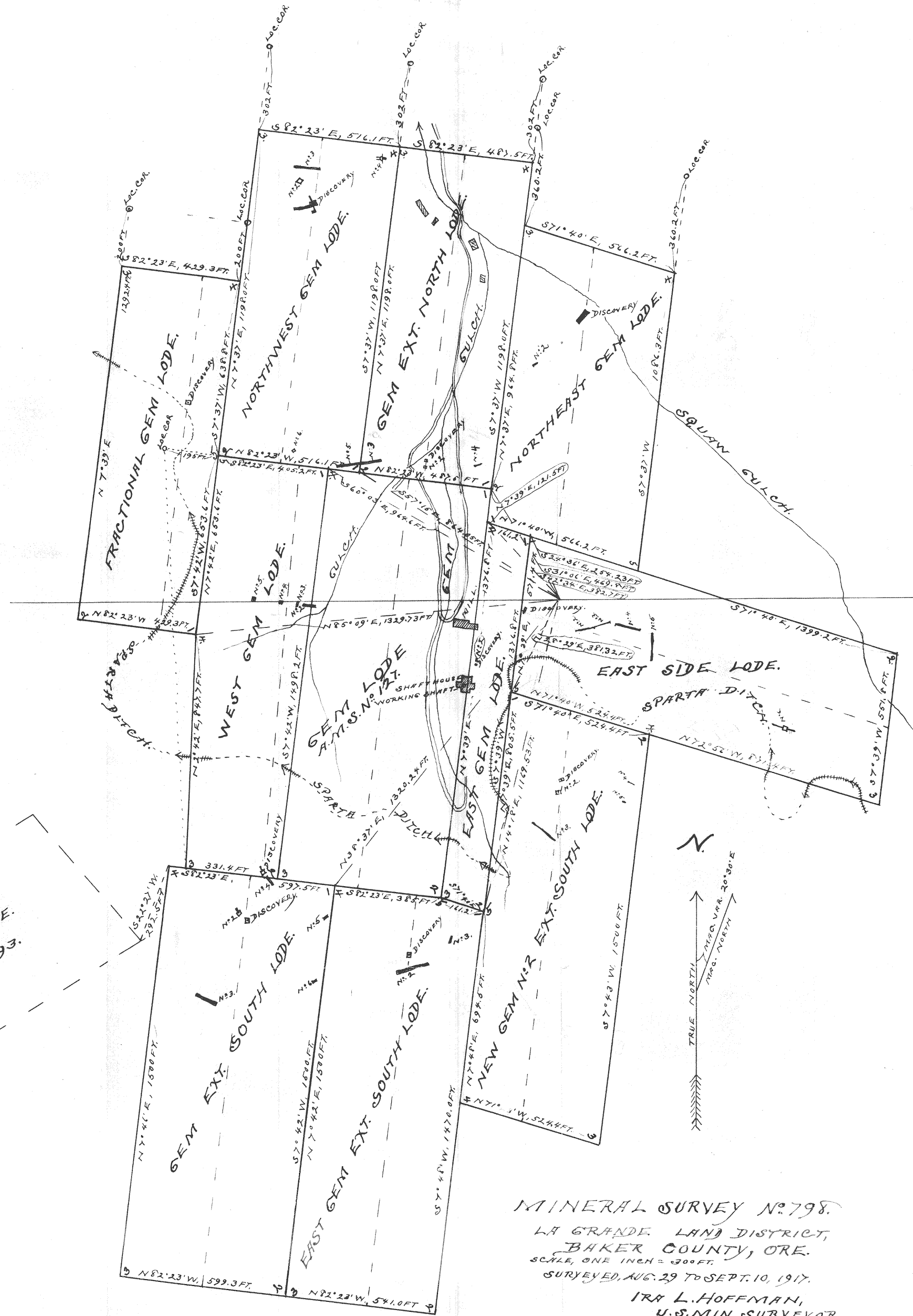


LITTLE BAY  
HORSE LODE.  
M.S. No 293.



MINERAL SURVEY No 798.  
LA GRANDE LAND DISTRICT,  
BAKER COUNTY, ORE.  
SCALE, ONE INCH = 300 FT.  
SURVEYED, AUG. 29 TO SEPT. 10, 1917.  
IRA L. HOFFMAN,  
U.S. MIN. SURVEYOR.