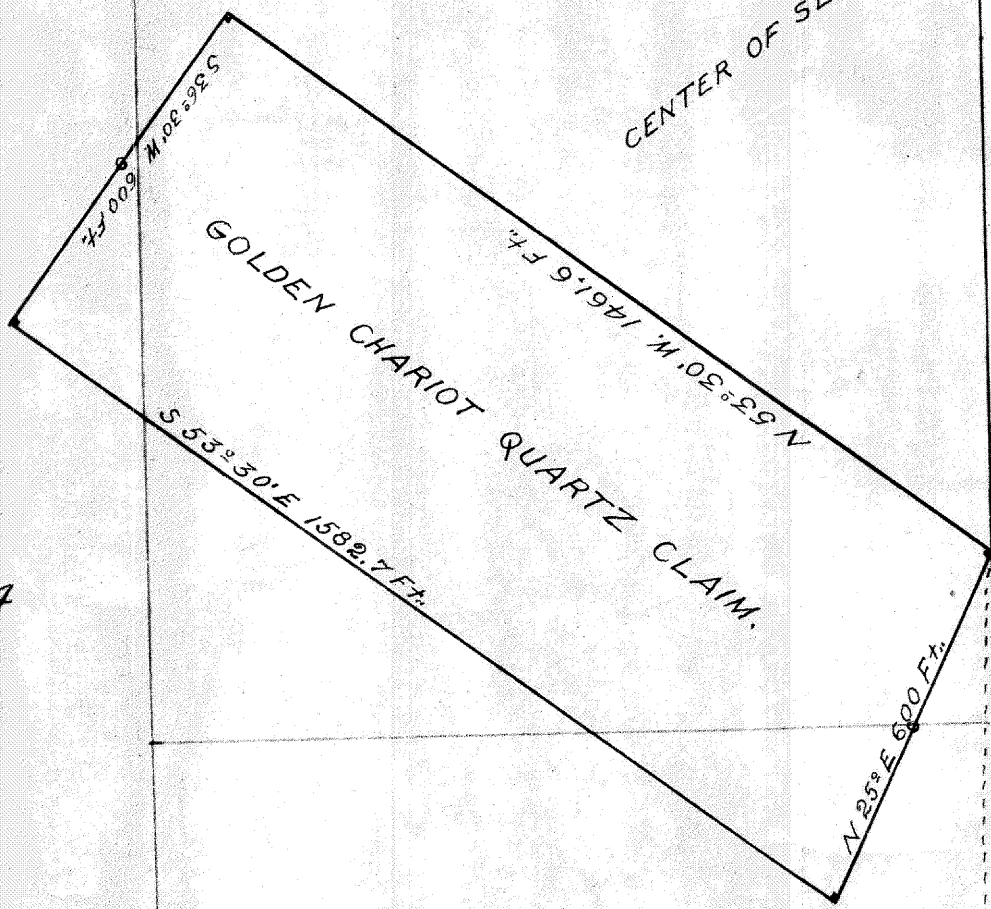


TOWNSHIP 9 SOUTH RANGE 37 EAST W.M.

SECTION 34

CENTER OF SECTION 34.



### DIAGRAM

SHOWING

the location and boundaries of the GOLDEN CHARIOT QUARTZ CLAIM, located on the S.W. 1/4 of Section 34 in Township 9 South Range 37 East W.M. in Baker County Oregon.

Drawn July 12<sup>th</sup> 1915 by  
(C.M. Foster Surveyor.

SCALE 300 FT. = ONE INCH.

S.W. Cor. of Sec. 34.

S. 1/4 Cor.