

**CALICO RESOURCES USA CORP.**

**GRASSY MOUNTAIN MINE PROJECT**  
**MALHEUR COUNTY, OREGON**

**NOXIOUS WEED MONITORING AND CONTROL PLAN**

October 2019

*Submitted to*

Oregon Department of Geology and Mineral Industries  
Mineral Land Regulation & Reclamation  
229 Broadalbin Street SW  
Albany, Oregon 97321-2246

*Prepared for*

**Calico Resources USA Corp.**

665 Anderson Street  
Winnemucca, Nevada 89445

*Prepared by:*



Reno:  
1650 Meadow Wood Lane  
Reno, Nevada 89502  
Phone: (775) 826-8822 | Fax: (775) 826-8857

Elko:  
835 Railroad Street  
Elko, Nevada 89801  
Phone: (775) 753-9496 | Fax: (775) 826-8857

**CALICO RESOURCES USA CORP.  
GRASSY MOUNTAIN MINE PROJECT  
NOXIOUS WEED MONITORING AND CONTROL PLAN**

**TABLE OF CONTENTS**

<b>1</b>	<b>INTRODUCTION.....</b>	<b>1</b>
1.1	Resource Study Area.....	1
<b>2</b>	<b>REGULATORY FRAMEWORK.....</b>	<b>3</b>
2.1	Federal Regulations.....	3
2.1.1	State Regulations.....	3
2.1.2	County Regulations.....	4
<b>3</b>	<b>PROJECT DESCRIPTION.....</b>	<b>4</b>
3.1	Project Activities.....	4
3.2	Previous Surveys.....	5
3.3	Environmental Setting.....	5
3.4	Noxious and Invasive Weed Inventory.....	5
<b>4</b>	<b>WEED MANAGEMENT STRATEGIES.....</b>	<b>7</b>
4.1	Prevention.....	7
4.1.1	Weed Management as an Assigned Duty.....	7
4.1.2	Awareness and Education.....	7
4.2	Protective Management Practices.....	8
4.3	Treatment.....	10
4.3.1	Mechanical Treatment.....	10
4.3.2	Prescribed Burning.....	11
4.3.3	Chemical Treatment.....	11
4.3.4	Biological Treatment.....	12
4.3.5	Protection of Wildlife Habitat Areas.....	13
<b>5</b>	<b>WEED MONITORING.....</b>	<b>13</b>
<b>6</b>	<b>CONCLUSIONS.....</b>	<b>14</b>
<b>7</b>	<b>REFERENCES.....</b>	<b>15</b>

**LIST OF TABLES**

<b>Table 1: Status of Noxious Weed Species in the Permit Area.....</b>	<b>7</b>
--	----------

## LIST OF FIGURES

<b>Figure 1. Location Map .....</b>	<b>1</b>
<b>Figure 2. Permit Area Map.....</b>	<b>2</b>
<b>Figure 3: Noxious Weeds within the Permit Area.....</b>	<b>6</b>

## APPENDICES

<b>Appendix A: ODA 2018 Oregon Noxious Weed Policy and Classification System</b>
<b>Appendix B: Malheur County Noxious Weed Control Public Notice</b>
<b>Appendix C: Oregon Pesticides of Interest and Concern</b>
<b>Appendix D: 2014 Lists of BLM-approved Herbicides and Adjuvants</b>

**CALICO RESOURCES USA CORP.**  
**GRASSY MOUNTAIN MINE PROJECT**  
**NOXIOUS WEED MONITORING AND CONTROL PLAN**

## **1 INTRODUCTION**

This Noxious Weed Monitoring and Control Plan (Plan) has been prepared in support of the Grassy Mountain Mine Project (Project) located in Malheur County, Oregon, and has been included as part of the Consolidated Permit Application.

The purpose of this Plan is to document baseline noxious weed conditions and develop a noxious weed management program for the Project. The short-term objective of this Plan is to facilitate compliance with 43 Code of Federal Regulations (CFR) 3809 regarding undue and unnecessary degradation of public lands; Chapter 603 of the Oregon Administrative Rules (OAR); and stipulations in National Environmental Policy Act (NEPA) decisions. The long-term objective of this Plan is to provide a systematic program for identifying, preventing, and treating noxious weeds with the goal of promoting sustainable and productive plant communities. Post-mining land use objectives include forage for livestock, forage and habitat for wildlife, dispersed recreation, and mineral exploration/development. Implementation of the Plan will manage the noxious weeds which pose a threat to the environmental and economic value to the Project.

### **1.1 Resource Study Area**

The Project is located approximately 22 miles south-southwest of Vale (Figure 1) and consists of two areas: the Mine and Process Area and the Access Road Area (Permit Area) (Figure 2). The Mine and Process Area is located on three patented lode mining claims and unpatented lode mining claims that cover an estimated 886 acres. These patented and unpatented lode mining claims are part of a larger land position that includes 419 unpatented lode mining claims and nine mill site claims on lands administered by the Bureau of Land Management (BLM). All proposed mining would occur on the patented claims, with some mine facilities on unpatented claims. The Mine and Process Area is in all or portions of Sections 5 through 8, Township 22 South, Range 44 East (T22S, R44E) (Willamette Meridian).

The Access Road Area is located on public land administered by the BLM, and private land controlled by others (Figure 2). A portion of the Access Road Area is a Malheur County Road named Twin Springs Road. The Access Road Area extends north from the Mine and Process Area to Russell Road, a paved Malheur County Road. The Access Road Area is in portions of Section 5, T22S, R44E, Sections 3, 10, 11, 14, 15, 21 through 23, 28, 29, and 32, T21S, R44E, Sections 1, 12 through 14, 23, 26, 27, and 34, T20S, R44E, Sections 6 and 7, T20S, R45E, and Sections 22, 23, 26, 35, and 36, T19S, R44E (Willamette Meridian). The width of the Access Road Area is 300 feet (150 feet on either side of the access road centerline) to accommodate possible minor widening or re-routing, and a potential powerline adjacent to the access road. There are several areas shown that are significantly wider than 300 feet on the Permit Area Map (Figure 2), which are areas where the final alignment has not yet been determined. The final engineering of the road will be consistent throughout, and within the Permit Area. The Access Road Area also includes a buffer on either side of the proposed road width for the collection of environmental baseline data. The road corridor will be 30 feet wide, which includes a 20-foot wide road travel width (ten feet on either side of the road centerline), two-foot wide shoulders on each side of the road, minimum

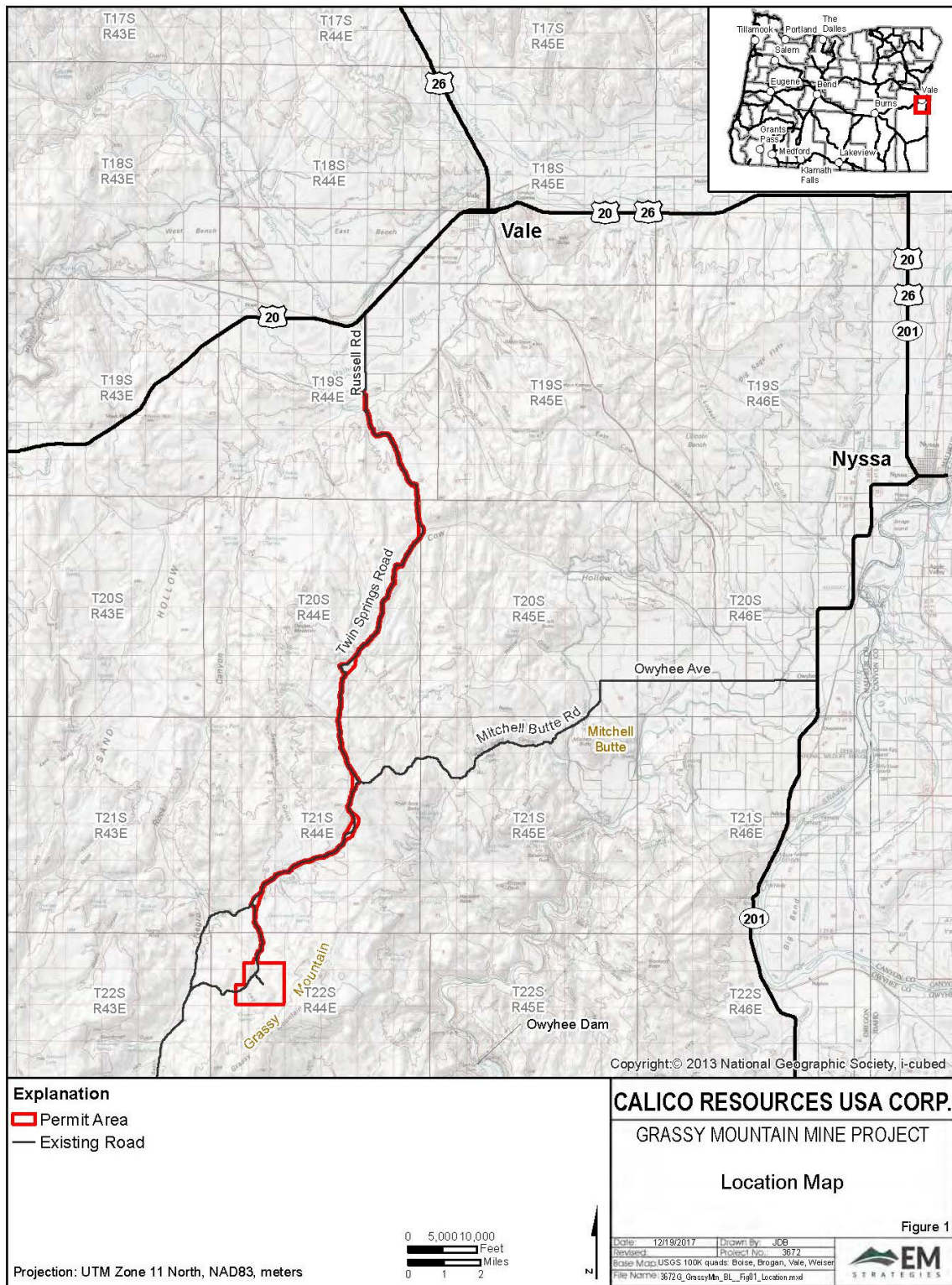


Figure 1. Location Map

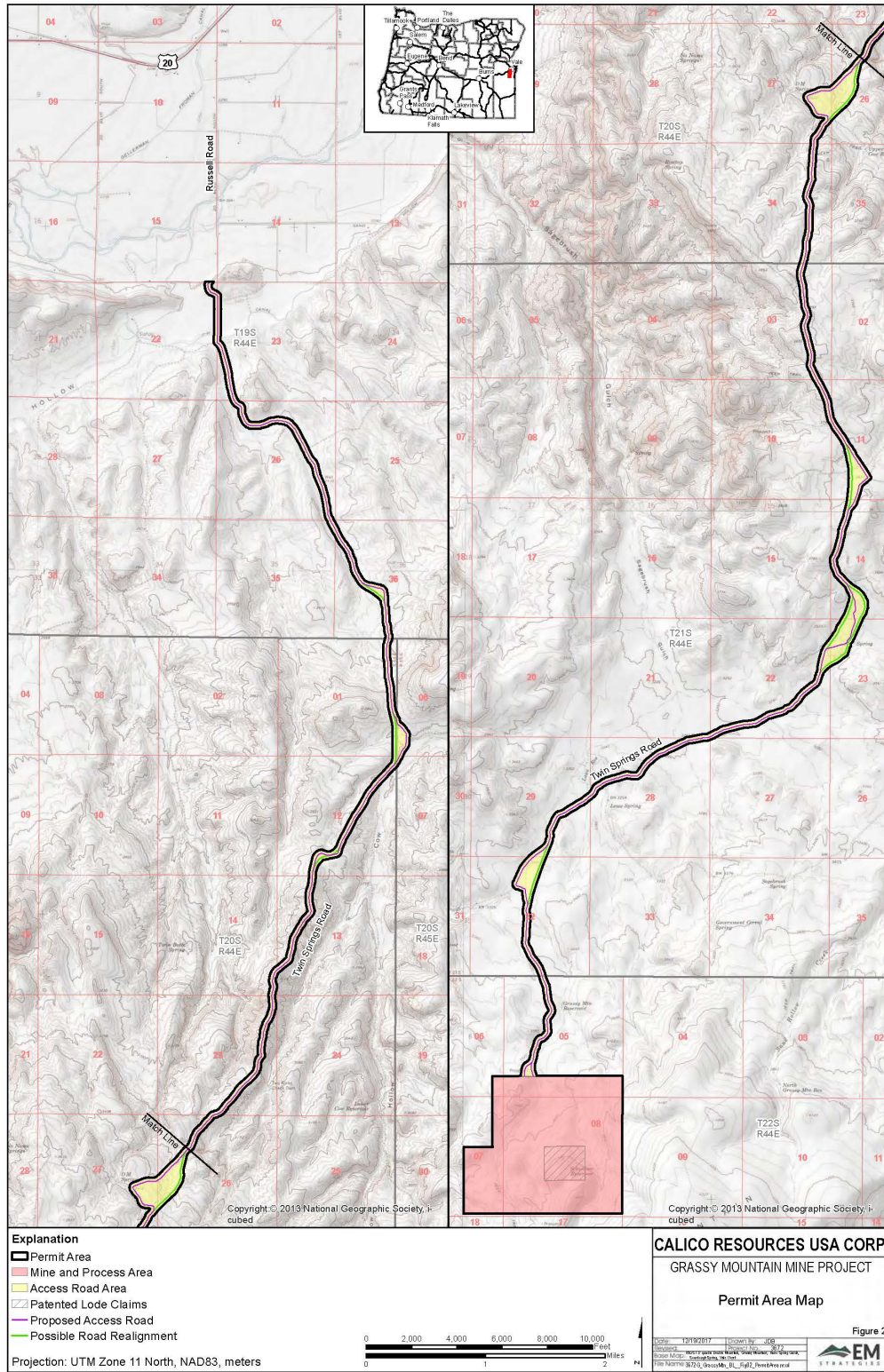


Figure 2. Permit Area Map

one-foot wide ditches on each side of the road, and appropriate cut and fill. The Access Road Area totals approximately 876 acres.

## **2 REGULATORY FRAMEWORK**

### **2.1 Federal Regulations**

The Federal Noxious Weed Act of 1974 (7 United States Code [U.S.C.] 2801-2813) as amended by Sec. 15, Management of Undesirable Plants on Federal Lands 1990, requires that each federal agency: 1) designate a lead office and person trained in the management of undesirable plants; 2) establish and fund an undesirable plant management program; 3) complete and implement cooperative agreements with State agencies; and 4) establish integrated management systems to control undesirable plant species.

The BLM defines a noxious weed as “any plant designated by a federal, state or county government as injurious to public health, agriculture, recreation, wildlife or property,” and “invasive plants include not only noxious weeds, but also other plants that are not native to this country or to the area where they are growing” (BLM 2011). The BLM has identified noxious weed management as a priority problem affecting public lands, and as such, has developed a policy relating to the management and coordination of noxious weed activities. This policy is set forth in *BLM Manual 9015 – Integrated Weed Management* and requires that all ground-disturbing projects and any projects that alter plant communities be assessed to determine the risks of introducing and spreading noxious weeds (BLM 1992). If the risk is moderate or higher, a weed management program needs to be established. Noxious weeds have been added as one of the critical elements of the human environment, and therefore need to be addressed in all NEPA-compliant documents.

#### **2.1.1 State Regulations**

The Oregon Department of Agriculture (ODA) has responsibility for jurisdiction, management, and enforcement of the State of Oregon’s noxious weed law. Oregon defines “noxious weeds” as those that represent “the greatest public menace” and are “a top priority for action by weed control programs” (Oregon Revised Statutes [ORS] 569-350). State noxious weed laws pertain to both private and public land. The ODA maintains and updates the list of Oregon noxious weeds (Appendix A; ODA 2018a) under OAR 603-052-1200. The Oregon noxious weeds listed in OAR 603-052-1200 are further divided into the following classifications: A; B; and T.

- A Listed Weed: a weed of known economic importance which occurs in the state in small enough infestations to make eradication or containment possible; or is not known to occur, but its presence in neighboring states make future occurrence in Oregon seem imminent. Recommended action: Infestations are subject to eradication or intensive control when and where found (ODA 2018a).
- B Listed Weed: a weed of economic importance which is regionally abundant, but which may have limited distribution in some counties. Recommended action: Limited to intensive control at the state, county or regional level as determined on a site specific, case-by-case basis. Where implementation of a fully integrated statewide management

plan is not feasible, biological control (when available) shall be the primary control method (ODA 2018a).

- T Designated Weed: a designated group of weed species that are selected and will be the focus for prevention and control by the Noxious Weed Control Program. Action against these weeds will receive priority. T designated noxious weeds are determined by the Oregon State Weed Board and directs ODA to develop and implement a statewide management plan. T designated noxious weeds are species selected from either the A or B list (ODA 2018a).

### **2.1.2 County Regulations**

The entire Malheur County is a weed control district known as the Malheur County Weed District. The weed district is governed by the Malheur County Court upon recommendations from the Malheur County Weed Advisory Board. Pursuant to ORS 570.575, Malheur County has prioritized control and/or eradication of these noxious weeds by A, B, and C classes, with Class A having the highest priority (Appendix B; Malheur County 2018).

- Class A Weed: a weed of known economic/environmental importance known to occur in the county in very small numbers to make eradication practicable, or not known to occur but its status in surrounding counties makes future occurrence seem imminent. Action: Infestations are subject to eradication or intensive control when and where found (Malheur County 2018).
- Class B Weed: a weed of known economic/environmental importance and of moderate to wide distribution and highly invasive, subject to intensive control or eradication where feasible at the county level. Action: Infestations are subject to control where found, with possible county assistance when funds are available. All Class B weeds are required to be controlled within 50 feet of all property lines, easements and rights-of-way, pursuant to ORS 570.525 (Malheur County 2018).
- Class C Weed: a weed of known economic/environmental importance and of general distribution, that is subject to control or eradication as local conditions warrant. Action: Infestations are treated at landowner's discretion (Malheur County 2018).

## **3 PROJECT DESCRIPTION**

### **3.1 Project Activities**

Calico Resources USA Corp (Calico) plans to construct, operate, reclaim, and close an underground mining and precious metal milling operation. In general, the proposed mining and precious metal processing operations will consist of an underground mine and ore processing facilities, including a conventional mill and tailings storage facility (TSF) and a waste rock storage area (WRSA), as well as other support facilities. The Project will include the following major components:

- One underground mine;
- One WRSA;



- One carbon-in-leach processing plant;
- One borrow pit area;
- One TSF;
- Run-of-mine ore stockpile;
- One reclaim pond;
- A water supply well field and pipeline, associated water delivery pipelines, and power;
- A power substation and distribution system;
- One ventilation shaft;
- Access and haul roads;
- Ancillary facilities that include the following: haul, secondary, and exploration roads; truck workshop; warehouse; stormwater diversions; sediment control basins; reagent and fuel storage; storage and laydown yards; explosive magazines; fresh water storage; monitoring wells; meteorological station; an administration/security building; borrow areas; growth media stockpiles; a landfill; and solid and hazardous waste management facilities to manage wastes; and
- Reclamation and closure, including the potential development of an evaporation cell for the TSF.

### **3.2 Previous Surveys**

Botanical surveys conducted in 2012, 2013, and 2015 by HDR Engineering, Inc. (HDR) (HDR 2012, 2014, 2015) and 2017 by EMS (EMS 2017) characterized vegetation within the Permit Area as a desert-rangeland type where sagebrush and grasses are the dominant species. The area has been extensively grazed for many years, and portions of the Permit Area appear to have been re-seeded at one time with a crested wheatgrass (*Agropyron cristatum*) dominated seed mix. Six plant communities were identified within the Permit Area: 1) Agricultural; 2) Bluebunch Wheatgrass/Cheatgrass/Annual; 3) Burned Yellow Rabbitbrush/Bluebunch Wheatgrass; 4) Crested Wheatgrass Seeding; 5) Wyoming Big Sagebrush/Bluebunch Wheatgrass; and 6) Wyoming Big Sagebrush/Crested Wheatgrass.

### **3.3 Environmental Setting**

The Permit Area is in the Sourdough and Grassy Mountains at elevations ranging between 3,250 and 4,800 feet above mean sea level (amsl). According to the Western Regional Climate Center (WRCC), the average maximum temperature recorded at the Owyhee Dam, Oregon field station, located approximately five miles east of the Permit Area, is 93.6 degrees Fahrenheit (°F) in July, and the average minimum temperature is 22.4°F in January. The average annual precipitation is 9.12 inches and tends to peak in May (WRCC 2016).

### **3.4 Noxious and Invasive Weed Inventory**

Ten noxious weed species listed on Oregon's noxious weed list were observed within the Permit Area during the 2019 botanical survey (Siskiyou Biosurvey LLC 2019). These species are listed in Table 1 below and shown on Figure 3. Cheatgrass, a Malheur County listed noxious weed, was also observed in the Permit Area, but was not mapped.

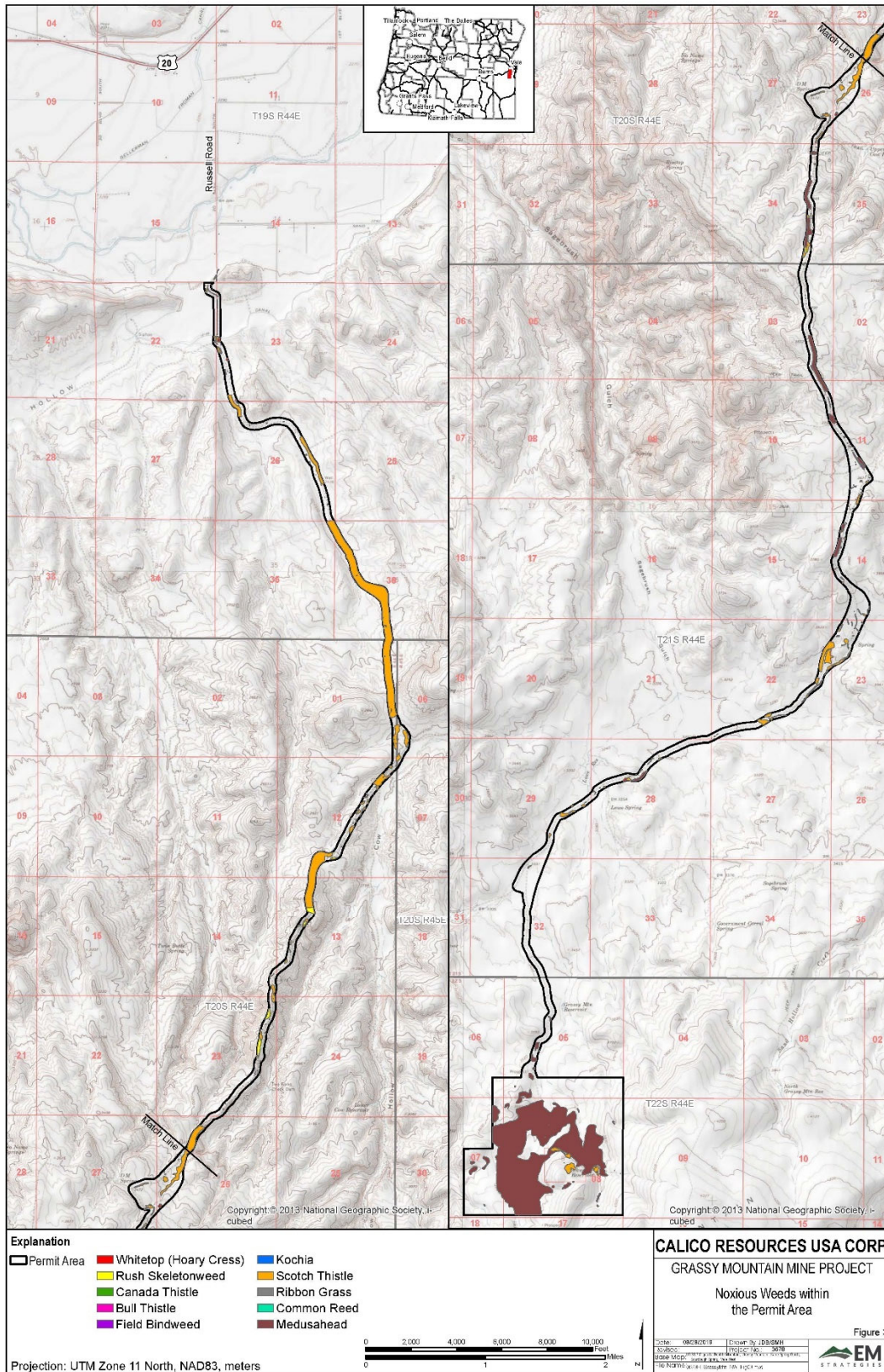


Figure 3: Noxious Weeds within the Permit Area

**Table 1: Status of Noxious Weed Species in the Permit Area**

Common Name	Scientific Name	Malheur County Status	Oregon Status
Cheatgrass	<i>Bromus tectorum</i>	C	n/a
Whitetop (hoary cress)	<i>Cardaria draba (Lepidium draba)</i>	B	B
Rush skeletonweed	<i>Chondrilla juncea</i>	A	B
Canada thistle	<i>Cirsium arvense</i>	B	B
Bull thistle	<i>Cirsium vulgare</i>	C	B
Field bindweed	<i>Convolvulus arvensis</i>	n/a	B
Kochia	<i>Kochia scoparia</i>	C	B
Scotch thistle	<i>Onopordum acanthium</i>	B	B
Ribbon grass	<i>Phalaris arundinacea</i>	n/a	B
Common reed	<i>Phragmites australis</i>	n/a	B
Medusahead	<i>Taeniatherum caput-medusae</i>	C	B

## 4 WEED MANAGEMENT STRATEGIES

Due to the presence of noxious weeds within the Permit Area and the amount of surface disturbance associated with the Project, the risk of introducing or spreading weed infestations is high, and a management program is required. The components of a noxious weed management program are prevention, treatment, and monitoring. Each component will be implemented until the final reclamation release for revegetation. Implementation of weed management techniques will be conducted in consultation with the ODA, the BLM, and/or the Malheur County Weed Inspector, as appropriate. The following sections help define how these major components will be implemented; however, site-specific methods will continue to be adapted that are appropriate to the situation, species and environment, and limitations of the Project.

### 4.1 Prevention

Prevention of new noxious weed infestations is the most cost-effective means of noxious weed control. Prevention, or more accurately, reduction of the potential for noxious weed establishment involves several approaches: weed management as an assigned duty; awareness and education; and implementation of cultural practices.

#### 4.1.1 Weed Management as an Assigned Duty

The implementation of this Plan will be included in the assigned duties of Calico’s Environmental Department staff. The staff will be responsible for regular monitoring of the Permit Area and developing the appropriate action for the eradication of new weed infestations. By implementing early detection followed by rapid response, the spread of noxious weeds is minimized, and eradication is achievable. In addition, the Environmental Department staff will be the repository for noxious weed observations and will be responsible for enforcement of all weed management strategies.

#### 4.1.2 Awareness and Education

Identification and eradication of the first noxious weed to establish in an area translates into major cost savings over treatment of large or multiple patches of weeds. The first weed can only

be detected if mine personnel can identify the plant as a noxious weed. Not every employee is required to be able to identify noxious weeds; however, key mine personnel will have training in noxious weed identification on an as-needed basis. Noxious weed identification training will occur during late winter or early spring, and an annual refresher course will be conducted if needed. As noxious weeds are detected, these trained individuals will visit the infestations to reinforce the noxious weed identification training. Therefore, the purpose of the noxious weed training is for personnel to be able to identify common, local invasive plants, incorporate simple techniques to prevent new infestations or prevent the spread of noxious weeds, and monitor the progress of treated infestations.

The Malheur County Weed Advisory Board offers information on identifying weeds and how to prevent their spread: <https://www.malheurco.org/weed-inspector/weeds/>. In addition, the ODA provides the Western US Invasive Plant EDRR [Early Detection and Rapid Response] Guide to Oregonians to aid in EDRR to noxious weed infestations: <https://www.oregon.gov/ODA/shared/Documents/Publications/Weeds/WesternUSInvasivePlantEDRRWeedIDGuide.pdf>.

#### **4.2 Protective Management Practices**

Protective management practices are changes in land management practices from practices that create favorable conditions for weed establishment to practices that reduce the potential for weed establishment. They reduce the potential for weed invasion and increase the effectiveness of other weed prevention or control methods. One or more of these practices will be implemented if monitoring indicates that these measures are necessary:

- Interim seeding of long-term disturbance. Road berms, sediment basins, growth media stockpiles, and other sites that will have exposed soil for more than one growing season will be seeded with an interim seed mix. The interim seed mix will be certified pure live seed and weed free and include bluebunch wheatgrass (*Pseudoroegneria spicata*) and bottlebrush squirreltail (*Elymus elymoides*), which are two aggressive native perennial grass species capable of competing with invasive annual plants. The establishment of native vegetation on these sites will reduce the potential for noxious weeds and other nonnative and invasive species to establish.
- Road maintenance. The Environmental Department staff will be responsible for overseeing road maintenance activities so that areas infested with weeds are not bladed. Road maintenance activities can spread seeds or weed parts that can establish in new locations. If necessary, weed infestations will be treated manually and removed before any road maintenance activity is conducted.
- Minimize disturbance to existing vegetation. Vehicles will be confined to existing roadways and not permitted to conduct cross-country travel, unless involved in approved activity (e.g., mining), to reduce the potential for new weed establishment.
- Maintain desired plant communities. Resistance to weed establishment is greatly increased by maintaining vegetation communities with native and desirable species.

- Effective reclamation. Whenever feasible, earthwork and reclamation seeding will occur within the same year to allow the seeded species to establish before non-native, invasive species and noxious weeds can dominate the reclaimed surfaces. Using species in a seed mix that have been successful in previous reclamation efforts, and seed suited for site conditions, will also reduce the potential for noxious weed establishment by providing a dense perennial plant cover. Reclamation seed mixes will be certified pure live seed and weed free. Plantings may serve as an additional option or in conjunction with reclamation seeding and will be determined on an as needed basis. Noxious weeds will not be counted towards vegetative cover during evaluations of re-vegetation bond release.
- Certified weed-free materials. Seed and mulch used in reclamation and straw bales used for sediment control will be certified weed free.
- Apply seed to treated areas. Any location that has been treated for noxious weeds will be seeded with either the interim seed mix or reclamation seed mix during the fall after treatment. Leaving the area fallow after treatment increases the risk that either the same species or another species of noxious weed or non-native, invasive species will establish on the site.
- Avoid travel through infested areas. Ensure that personnel and contractors avoid, as much as possible, travel through areas which are identified as containing noxious weeds to prevent their spread to uncontaminated areas.
- Decontaminate vehicles. Personnel or contractors, who transport equipment on site, or those that must travel through identified noxious weed areas, are required to power wash vehicles and equipment to ensure that the spread of noxious weed seeds are minimized. Prior to mine site access, all contractors are required to check-in at the mine site administrative offices. Contractors will be expected to wash vehicles locally prior to accessing the site, or when this is not possible, on-site decontamination procedures will use high pressure water hoses to spray down all areas of the vehicle and equipment which have the potential to collect noxious weeds or noxious weed seeds. A vehicle wash bay facility will be located adjacent to the truck workshop and warehouse. The main areas on vehicles that will be decontaminated will include, but are not limited to, the equipment tracks, tires, undercarriage, axles, wheel wells, running boards, bumpers, and brush guard assemblies.
- Segregate topsoil. In areas that are to be cleared and where noxious weeds have been identified, Calico will ensure that the topsoil contaminated with noxious weeds will be cleared first and will be encapsulated in the TSF.
- Disposal. Noxious weeds that are mechanically removed will be disposed of in a location and manner acceptable to the ODA.

### **4.3 Treatment**

Noxious weed treatment identifies how areas infested with noxious weeds will be handled to prevent the spread of the infestation and control or eliminate noxious weeds within the Permit Area. The goal of noxious weed treatment is to reduce infestations below the level at which they cause failure to achieve reclamation revegetation success criteria or displace native species. The treatment methods used, and the timing of treatment will be determined on a species-specific basis to be most effective. Generally, treatment will occur prior to seed production. The general types of treatment methods that Calico has outlined as potentially useful for the Project are described in the following subsections. Specific treatment recommendations for the five noxious weeds known to occur within the Permit Area (Section 3.4) are included in Appendix C (DiTomaso 2013).

#### **4.3.1 Mechanical Treatment**

Mechanical eradication is a technique in which physical methods or equipment is used to damage or destroy the target plant (USFWS 2009; Donaldson 2013). Mechanical treatments include any form of physical destruction of the plant (e.g., pulling, mowing, cutting, and grazing). However, mechanical treatment may cause favorable conditions for some weeds' reproductive mechanisms and should therefore be considered carefully prior to initiation (USFWS 2009).

Pulling is most effective in controlling the spread of new infestations by neutralizing the weed prior to seed dispersal. This treatment works best for the following: small infestations; annual or biennial plants; shallow-rooted plant species that do not sprout from residual roots; plants that grow on sandy or gravelly soils; difficult areas to access that prevent the use of chemical, motorized equipment, or livestock; or small infestations that will reduce or eliminate seed production. Weed species that are good candidates for the pulling method include: bull thistle (*Cirsium vulgare*); medusahead rye (*Taeniatherum caput-medusae*); musk thistle (*Carduus nutans*); puncturevine (*Tribulus terrestris*); scotch thistle (*Onopordum acanthium*); and yellow starthistle (*Centaurea solstitialis*) (Donaldson 2013).

Mowing and cutting employ mechanical or hand tools to separate the plant from its roots. Mowing works best for large, relatively flat and dry areas with minimal safety concerns; large-scale restoration sites where weeds need to be controlled during the first or second growing season; and areas where repeated mowing will weaken weed plants by depleting root and rhizome reserves. Cutting can be utilized for small infestations of fleshy-stemmed biennial thistles or for tall biennial weed species prior to seed dispersal, in combination with herbicide treatments, and for weed species that spread seeds through a "tumbling action" (i.e. diffuse knapweed [*Centaurea diffusa*]) (Donaldson 2013).

The use of grazing animals is sometimes considered a form of mechanical treatment, since the plants are generally physically damaged which minimizes growth. Horses, cattle, sheep, and goats can be used to selectively overgraze certain weed species. Overgrazing results in a weakened state whereby the efficacy of herbicide treatments is increased. However, noxious weeds vary greatly in their palatability to different types of livestock and implementation should be carefully

weighed against the transfer of weed seed by the livestock, scale of the infestation, potential damage to desirable species, and livestock behavior response (Davison et al. 2006).

#### **4.3.2 Prescribed Burning**

Prescribed burning entails planning, setting, and managing controlled fires. A controlled burn will only eradicate noxious weeds and will not likely have any effect on noxious weed seeds. Controlled burns should only be used if a favorable vegetative species can repopulate an area without the noxious weed reappearing. This type of treatment does not treat already felled seeds in the plant bed and is only successful if the treated area is reseeded with a favorable seed mix. Prescribed burning typically requires a permit and is limited to certain times of the year. Rarely will prescribed burning provide adequate control of most invasive plant species (USFWS 2009).

#### **4.3.3 Chemical Treatment**

Chemical treatment involves using herbicides to efficiently and effectively suppress or kill noxious weed species. Chemical treatment may be a necessary technique when treating a large noxious weed infestation as an effective way to reduce weed populations prior to secondary treatment. This is also a common technique when complete eradication is the land management goal. There are many types of herbicides; some are derived from plants (e.g., nicotine-based herbicides) or are manufactured synthetically (e.g., 2,4-D). Herbicides can be classified in terms of their mode of action and include growth regulators, amino acid inhibitors, grass meristem destroyers, cell membrane destroyers, root and shoot inhibitors, and amino acid derivatives which interfere with plant metabolism in a variety of ways (Donaldson 2013). The choice of which herbicide is best for a situation depends on the target weed species, the presence of other desirable plant species, soil texture, depth, distance to water, and environmental conditions (Bussan and Dyer 1999). When using herbicides, considerations should be given to the safety of the environment and the individuals applying the herbicide, costs to apply, and the effectiveness of the material used.

Any chemical weed control efforts on public lands will be coordinated and approved by the Malheur County Weed Inspector and/or the BLM as needed. Appendix C includes a list of Oregon Pesticides of Interest and Oregon Pesticides of Concern. Appendix D includes the list of BLM-approved herbicides. Herbicide application will conform to all federal and state regulations and herbicides will be applied by certified applicators, or under the direct supervision of a certified applicator (BLM Manual 9011). Not all herbicides have been approved for use on public lands; therefore, the choice of treatments on public lands may be limited. The following subsections describe techniques to be utilized during the lifetime of the Project with respect to certain areas of concern.

##### *Selective Site Sterilization*

Federal mine safety standards require areas surrounding facilities such as fuel storage tanks and power transformers to remain free of vegetation (30 CFR 56.4130). These areas will be treated annually, or as needed with an approved soil sterilant. This spray will be conducted by a licensed pesticide contractor. The selection, use, storage, and disposal of chemicals used as a function of

this Plan will be conducted according to manufacturer's recommendations and applicable state and federal laws.

### *Biennial Weed Spraying*

Biennial weed spraying will help control or eradicate existing infestations. Additional weed treatment will be performed on an as needed basis to supplement biennial efforts. Weed treatments for infestations within the Permit Area and selected areas adjacent to the Permit Area will be conducted by a licensed pesticide contractor. This task will be directed and managed by the Project's Environmental Department staff. These treatment efforts are usually performed in early spring for herbaceous species such as Canada thistle, hoary cress (*Cardaria draba*), perennial pepperweed (*Lepidium latifolium*), and Russian knapweed (*Acroptilon repens*) and in mid to late summer for woody species such as salt cedar (*Tamarix* spp.) (Bussan and Dyer 1999). The selection, use, storage, and disposal of chemicals used as a function of this Plan will be conducted according to manufacturer's recommendations and applicable laws or regulations.

Any application of herbicide over, in, or within three feet of waters of the state (as defined in ORS 468B.005) would require compliance with the Pesticide General Permit (2300A). Waters of the state within the Permit Area include two wetlands totaling 0.2 acre and the J-H Canal (EMS 2018). Calico will avoid spraying herbicides over, in, or within three feet of the two wetland features and J-H Canal. If weed eradication becomes necessary within three feet of the two wetland features or J-H Canal, Calico will utilize mechanical treatment techniques using hand tools.

#### **4.3.4 Biological Treatment**

Biological treatment often involves using insects or livestock to control weed populations and reduce their abundance to acceptable levels (Wilson and McCaffrey 1999). Other biological organisms that specifically target the weed species of concern may also be used and can include fungi or diseases. Biological treatment is often used in conjunction with another treatment method. Depending on the severity of the noxious weed infestation, biological treatment can sometimes be used as the sole control measure. Biological treatments often only reduce infestations to manageable sizes for secondary treatment or can often reduce a population to the point where native species can overgrow the noxious species. The ODA provides information on biological treatment for specific species on their website: <http://www.oregon.gov/ODA/programs/Weeds/Pages/BiologicalControl.aspx>.

The ODA's Noxious Weed Program has been utilizing biological treatment for the control of invasive weeds since 1947 and currently manages over 120 biocontrol projects (weed/biological agent combinations) (ODA 2018b). They have demonstrated success in controlling targeted invasive weeds, including tansy ragwort (*Senecio jacobaea*), St. Johnswort (*Hypericum perforatum*), musk thistle, Mediterranean sage (*Salvia aethiopsis*), purple loosestrife (*Lythrum salicaria*), yellow starthistle, Dalmatian toadflax (*Linaria dalmatica*), and diffuse knapweed.



#### **4.3.5 Protection of Wildlife Habitat Areas**

It is important, when determining a treatment mechanism, to recognize potential environmental parameters that may require specific considerations. Some areas within the Permit Area may require special treatment because of the habitat requirements for some wildlife species. This may include proximity to waterways, migration habitats, grazing habitats, and other wildlife specific requirements.

### **5 WEED MONITORING**

Continued monitoring is an integral part of management and elimination of noxious weeds. The two main objectives of monitoring for noxious weeds are to identify new infestations and to evaluate the effectiveness of noxious weed treatments. Two types of weed surveys will be performed regularly at the Project. An informal survey will be carried out annually by Environmental Department staff. Specific areas of the Permit Area will be inspected such as roads, berms, WRSAs, process facilities, laydown yards, reclaimed areas, stormwater diversions, and growth media stockpiles, since these are often areas susceptible to weed establishment. The results of the annual surveys will be used to direct weed management efforts for the year and be the basis for updating the Plan.

Formal weed surveys will be performed on a biennial basis, until the final reclamation release of revegetation. The results of these surveys will be documented in a report, which will be provided to the BLM. Areas of noxious weed infestations noted during the annual and biennial surveys will be recorded with a GPS unit, and documented on area maps and with photographs. Notes regarding the size of the infestation, vigor of the plants, density of the plants, success of establishment of desired species seeded after treatment, and recommendations for follow-up treatment will be taken. This information provides a record of the noxious weed control that has been conducted and the effectiveness of the treatment program. This information will also document whether the cultural practice of post-treatment seeding, if implemented, is successful in reducing the potential of the reestablishment of noxious weeds. It is important to note, from year to year, if the infestation areas are increasing or decreasing in size and to track the phenology stages of the weed species. The monitoring frequency required for effective noxious weed management, for different areas within the Project, will vary, as will the treatment methodology.

Any new noxious weed infestations identified during weed monitoring efforts will also be reported to ODA using the Report and Identification Form provided online at: <https://data.oda.state.or.us/fmi/webd/WebSubmissions?script=RedirectWebSubmissions&param=Invasive>. The reports are filled out and submitted online.

Calico will monitor the effectiveness of previous years' treatment methodologies to determine if alternate measures should be taken to reduce or eliminate existing infestations, reduce seed production, and prevent future infestations. Infestations treated previously or found after the growing season will be monitored in the spring to determine if the treatment has been effective and to include the sites in the biennial treatment plan, as necessary. Seeds of noxious weeds can

remain viable in the soil for several years; therefore, treated areas will be monitored for a period of several years after eradication to ensure new plants do not establish.

## **6 CONCLUSIONS**

Calico will utilize prevention and treatment techniques as described in the Plan and approved by the ODA and/or the BLM to reduce the risk of introduction or spread of noxious weeds in the Permit Area. If monitoring identifies additional noxious weed species, the treatments outlined above will be implemented as necessary. This Plan is considered preliminary and will be updated for suitability and adequacy as the Project progresses.

## 7 REFERENCES

- Bureau of Land Management (BLM). 1991. *Chemical Pest Control*. BLM Manual 9011.
- \_\_\_\_\_. 1992. *Integrated Weed Management*. BLM Manual 9015. December 2, 1992.
- \_\_\_\_\_. 2011. U.S. Department of the Interior web site. June 27, 2011. *What are Noxious and Invasive Weeds?* [www.blm.gov/wo/st/en/prog/more/weeds/weed\\_definition.html](http://www.blm.gov/wo/st/en/prog/more/weeds/weed_definition.html).
- Bussan, A.J., and W.E. Dyer. 1999. *Herbicides and Rangeland*. Biology and Management of Noxious Rangeland Weeds. Oregon State University, Corvallis, Oregon. Pages 116-132.
- Davison, J.C., E. Smith, and L.M. Wilson. 2006. *Livestock Grazing Guidelines for Controlling Noxious Weeds in the Western United States*. A Western Region Sustainable Agriculture, Research and Education Project Report. <http://www.unce.unr.edu/publications/files/Ag/2006/ebo605.pdf>. Accessed October 30, 2014.
- DiTomaso, J. 2013. *Weed Control in Natural Areas of the Western United States*. Weed Research and Information Center, University of California. 544 pages.
- Donaldson, S. 2013. *Weed Warriors Curriculum*. University of Nevada Cooperative Extension. May 2013. Pp. 319.
- EM Strategies, Inc. (EMS) 2017. Baseline Vegetation Survey of the Grassy Mountain Exploration Project Expansion Area. Finalized 2018.
- \_\_\_\_\_. 2018. Wetland Delineation Report for Grassy Mountain Mine Project Malheur County. Finalized 2018.
- HDR Engineering, Inc. 2012. Draft Terrestrial Vegetation Report, Grassy Mountain Exploration Project. July 2012. Unpubl. 40 pp.
- \_\_\_\_\_. 2014. Draft Terrestrial Vegetation Baseline Study, Grassy Mountain Exploration Project. May 2014. Unpubl. 84pp.
- \_\_\_\_\_. 2015. Draft Terrestrial Vegetation Baseline Study, Addendum 1, Grassy Mountain Exploration Project. July 2015. Unpubl. 44pp.
- Malheur County. 2019. *Public Notice: Malheur County Noxious Weed Control*. <https://www.malheurco.org/wp-content/uploads/Departments/Weed/MalheurWeedList.pdf>. Accessed February 6, 2019.

Oregon Department of Agriculture (ODA). 2018a. *Noxious Weed Policy and Classification System 2018*.

<https://www.oregon.gov/ODA/shared/Documents/Publications/Weeds/NoxiousWeedPolicyClassification.pdf>. Accessed February 6, 2019.

\_\_\_\_\_. 2018b. Invasive Noxious Weed Control Program 2017 Annual Report. Available online at <https://www.oregon.gov/ODA/shared/Documents/Publications/Weeds/NoxiousWeedProgramAnnualReport.pdf>. Accessed February 6, 2019.

Siskiyou Biosurvey LLC. 2019. *Botanical Survey & Vegetation Community Mapping Report, Grassy Mountain Mine Project, Malheur County, Oregon*. June 2019.

United States Fish and Wildlife Service (USFWS). 2009. *Managing Invasive Plants: Concepts, Principles, and Practices*. Available online at: <https://www.fws.gov/invasives/stafftrainingmodule/>. Accessed February 6, 2019.

Western Regional Climate Center (WRCC). 2016. *Western U.S. Climate Historical Summary for Owyhee Dam Oregon*. <https://wrcc.dri.edu/cgi-bin/cliMAIN.pl?or6405>. Accessed February 6, 2019.

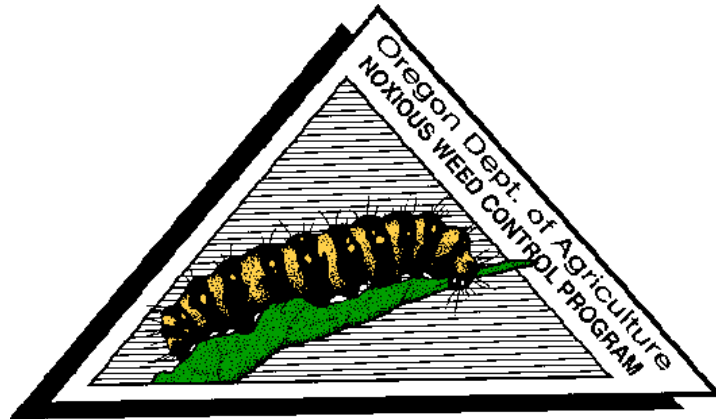
Wilson, L.M. and J.P. McCaffrey. 1999. *Biological control of noxious rangeland weeds*. Pages 97–116 In R.L. Sheley and J.K. Petroff, eds. *Biology and Management of Noxious Rangeland Weeds*. Corvallis, OR: Oregon State University Press.

## **APPENDIX A**

OREGON DEPARTMENT OF AGRICULTURE (ODA)  
OREGON NOXIOUS WEED POLICY AND CLASSIFICATION SYSTEM

# Oregon Department of Agriculture

## Noxious Weed Policy and Classification System 2018



### Noxious Weed Control Program

Address: 635 Capitol Street NE Salem, Oregon 97301

Phone: (503) 986-4621 Fax: (503) 986-4786

[www.oregon.gov/ODA/programs/Weeds/Pages/AboutWeeds.aspx](http://www.oregon.gov/ODA/programs/Weeds/Pages/AboutWeeds.aspx)

## Mission Statement

To protect Oregon's natural resources and agricultural economy from the invasion and proliferation of invasive noxious weeds.

## Program Overview

The Oregon Department of Agriculture (ODA) Noxious Weed Control Program provides statewide leadership for coordination and management of state listed noxious weeds. The state program focuses on noxious weed control efforts by implementing early detection and rapid response projects for new invasive noxious weeds, implementing biological control, implementing statewide inventory and survey, assisting the public and cooperators through technology transfer and noxious weed education, maintaining noxious weed data and maps for priority listed noxious weeds, and assisting land managers and cooperators with integrated weed management projects. The Noxious Weed Control Program also supports the Oregon State Weed Board (OSWB) with administration of the OSWB Grant Program, developing statewide management objectives, developing Weed Risk Assessments, and maintaining the State Noxious Weed List.

Tim Butler  
Program Manager  
[tbutler@oda.state.or.us](mailto:tbutler@oda.state.or.us)  
(503) 986-4621

## Table of Contents

Policy and Classification System.....	1
Criteria.....	3
Classification Definitions.....	4
A Listed Weeds.....	5
B Listed Weeds.....	7



# Noxious Weed Control Policy and Classification System

## Definition

“Noxious Weed” means a terrestrial, aquatic or marine plant designated by the State Weed Board under ORS 569.615 as among those representing the greatest public menace and as a top priority for action by weed control programs.

Noxious weeds have become so thoroughly established and are spreading so rapidly on private, state, county, and federally owned lands, that they have been declared by ORS 569-350 to be a menace to public welfare. Steps leading to eradication, where possible, and intensive control are necessary. It is further recognized that the responsibility for eradication and intensive control rests not only on the private landowner and operator, but also on the county, state, and federal government.

## Weed Control Policy

Therefore, it shall be the policy of ODA to:

1. Assess non-native plants through risk assessment processes and make recommendations to the State Weed Board for potential listing.
2. Rate and classify weeds at the state level.
3. Prevent the establishment and spread of listed noxious weeds.
4. Encourage and implement the control or containment of infestations of listed noxious weed species and, if possible, eradicate them.
5. Develop and manage a biological weed control program.
6. Increase awareness of potential economic losses and other undesirable effects of existing and newly invading noxious weeds, and to act as a resource center for the dissemination of information.
7. Encourage and assist in the organization and operation of noxious weed control programs with government agencies and other weed management entities.
8. Develop partnerships with county weed control districts, universities, and other cooperators in the development of control methods.
9. Conduct statewide noxious weed surveys and weed control efficacy studies.

## Weed Classification System

The purpose of this Classification System is to:

1. Act as the ODA's official guideline for prioritizing and implementing noxious weed control projects.
2. Assist the ODA in the distribution of available funds through Oregon State Weed Board to assist county weed programs, cooperative weed management groups, private landowners, and other weed management entities.
3. Serve as a model for private and public sectors in developing noxious weed classification systems that aid in setting effective noxious weed control strategies.

## Criteria for Determining Economic and Environmental Significance of Noxious Weeds is Based Upon:

### Detrimental Effects

1. A plant species that causes or has the potential to cause severe negative impacts to Oregon's agricultural economy and natural resources.
2. A plant species that has the potential to or does endanger native flora and fauna by its encroachment into forest, range, and conservation areas.
3. A plant species that has the potential or does hamper the full utilization and enjoyment of recreational areas.
4. A plant species that is poisonous, injurious, or otherwise harmful to humans and/or animals.

### Plant Reproduction

1. A plant that reproduces by seed capable of being dispersed over wide areas or that is long-lived, or produced in large numbers.
2. A plant species that reproduces and spreads by tubers, creeping roots, stolons, rhizomes, or other natural vegetative means.

### Distribution

1. A weed of known economic importance which occurs in Oregon in small enough infestations to make eradication/containment possible; or not known to occur, but its presence in neighboring states makes future occurrence seem imminent.
2. A weed of economic or ecological importance and of limited distribution in Oregon.
3. A weed that has not infested the full extent of its potential habitat in Oregon.

### Difficulty of Control

A plant species that is not easily controlled with current management practices such as chemical, cultural, biological, and physical methods.

## Noxious Weed Control Classification Definitions

Noxious weeds, for the purpose of this system, shall be listed as either A or B, and may also be designated as T, which are priority targets for control, as directed by the Oregon State Weed Board.

- **A Listed Weed:**

A weed of known economic importance which occurs in the state in small enough infestations to make eradication or containment possible; or is not known to occur, but its presence in neighboring states make future occurrence in Oregon seem imminent (Table I).

Recommended action: Infestations are subject to eradication or intensive control when and where found.

- **B Listed Weed:**

A weed of economic importance which is regionally abundant, but which may have limited distribution in some counties (Table II).

Recommended action: Limited to intensive control at the state, county or regional level as determined on a site specific, case-by-case basis. Where implementation of a fully integrated statewide management plan is not feasible, biological control (when available) shall be the primary control method.

- **T Designated Weed (T):**

A designated group of weed species that are selected and will be the focus for prevention and control by the Noxious Weed Control Program. Action against these weeds will receive priority. T designated noxious weeds are determined by the Oregon State Weed Board and directs ODA to develop and implement a statewide management plan. T designated noxious weeds are species selected from either the A or B list.

Table I: A Listed Weeds

Common Name	Scientific Name
African rue (T)	<i>Peganum harmala</i>
Cape-ivy (T)	<i>Delairea odorata</i>
Camelthorn	<i>Alhagi pseudalhagi</i>
Coltsfoot	<i>Tussilago farfara</i>
Cordgrass Common (T) Dense-flowered (T) Saltmeadow (T) Smooth (T)	<i>Spartina anglica</i> <i>Spartina densiflora</i> <i>Spartina patens</i> <i>Spartina alterniflora</i>
Common frogbit	<i>Hydrocharis morsus-ranae</i>
Delta arrowhead	<i>Sagittaria platyphyla</i>
European water chestnut	<i>Trapa natans</i>
Flowering rush (T)	<i>Butomus umbellatus</i>
Garden yellow loosestrife (T)	<i>Lysimachia vulgaris</i>
Giant hogweed (T)	<i>Heracleum mantegazzianum</i>
Goatgrass Barbed (T) Ovate	<i>Aegilops triuncialis</i> <i>Aegilops ovata</i>
Goatsrue (T)	<i>Galega officinalis</i>
Hawkweed King-devil Mouse-ear (T) Orange (T) Yellow (T)	<i>Pilosella piloselloides</i> (Hieracium) <i>Pilosella pilosella</i> (Hieracium) <i>Pilosella aurantiacum</i> (Hieracium) <i>Pilosella floribundum</i> (Hieracium)
Hoary alyssum (T)	<i>Berteroa incana</i>
Hydrilla	<i>Hydrilla verticillata</i>
Japanese dodder	<i>Cuscuta japonica</i>
Kudzu (T)	<i>Pueraria lobata</i>
Matgrass (T)	<i>Nardus stricta</i>
Oblong spurge (T)	<i>Euphorbia oblongata</i>
Paterson's curse (T)	<i>Echium plantagineum</i>
Purple nutsedge	<i>Cyperus rotundus</i>
Ravennagrass (T)	<i>Saccharum ravennae</i>
Silverleaf nightshade	<i>Solanum elaeagnifolium</i>
West Indian spongeplant	<i>Limnobium laevigatum</i>

(T) T Designated Weed (See page 4)

(Continued)

Table I: A Listed Weeds

Common Name	Scientific Name
Squarrose knapweed (T)	<i>Centaurea virgata</i>
Starthistle Iberian (T) Purple (T)	<i>Centaurea iberica</i> <i>Centaurea calcitrapa</i>
Syrian bean-caper	<i>Zygophyllum fabago</i>
Thistle Plumeless (T) Smooth distaff Taurian (T) Wetted (Curly plumeless) (T) Woolly distaff (T)	<i>Carduus acanthoides</i> <i>Carthamus baeticus</i> <i>Onopordum tauricum</i> <i>Carduus crispus</i> <i>Carthamus lanatus</i>
Water soldiers	<i>Stratiotes aloides</i>
White bryonia	<i>Bryonia alba</i>
Yellow floating heart (T)	<i>Nymphoides peltata</i>
Yellowtuft (T)	<i>Alyssum murale</i> , <i>A. corsicum</i>

(T) T Designated Weed (See page 4)

Table II: B Listed Weeds

Common Name	Scientific Name
Armenian (Himalayan) blackberry	<i>Rubus armeniacus</i> ( <i>R. procerus</i> , <i>R. discolor</i> )
Biddy-biddy	<i>Acaena novae-zelandiae</i>
Broom French* Portuguese (T) Scotch* Spanish	<i>Genista monspessulana</i> <i>Cytisus striatus</i> <i>Cytisus scoparius</i> <i>Spartium junceum</i>
Buffalobur	<i>Solanum rostratum</i>
Butterfly bush	<i>Buddleja davidii</i> ( <i>B. variabilis</i> )
Common bugloss (T)	<i>Anchusa officinalis</i>
Common crupina	<i>Crupina vulgaris</i>
Common reed	<i>Phragmites australis</i> ssp. <i>australis</i>
Creeping yellow cress	<i>Rorippa sylvestris</i>
Cutleaf teasel	<i>Dipsacus laciniatus</i>
Dodder	<i>Cuscuta</i> spp.
Dyer's woad	<i>Isatis tinctoria</i>
Ivy Atlantic English	<i>Hedera hibernica</i> <i>Hedera helix</i>
Eurasian watermilfoil	<i>Myriophyllum spicatum</i>
False brome	<i>Brachypodium sylvaticum</i>
Field bindweed* (T)	<i>Convolvulus arvensis</i>
Garlic mustard (T)	<i>Alliaria petiolata</i>
Geranium Herb Robert Shiny leaf geranium	<i>Geranium robertianum</i> <i>Geranium lucidum</i>
Gorse* (T)	<i>Ulex europaeus</i>
Halogeton	<i>Halogeton glomeratus</i>
Houndstongue	<i>Cynoglossum officinale</i>
Indigo bush	<i>Amorpha fruticosa</i>
Johnsongrass	<i>Sorghum halepense</i>
Jointed goatgrass	<i>Aegilops cylindrica</i>
Jubata grass	<i>Cortaderia jubata</i>

\* Targeted for biocontrol

(T) T Designated Weed (See page 4)

(Continued)

Table II: B Listed Weeds

Common Name	Scientific Name
Knapweed	
Diffuse*	<i>Centaurea diffusa</i>
Meadow*	<i>Centaurea pratensis</i>
Russian*	<i>Acroptilon repens</i>
Spotted* (T)	<i>Centaurea stoebe (C. maculosa)</i>
Knotweed	
Giant	<i>Fallopia sachalinensis (Polygonum)</i>
Himalayan	<i>Polygonum polystachyum</i>
Japanese	<i>Fallopia japonica (Polygonum)</i>
Kochia	<i>Kochia scoparia</i>
Lesser celandine	<i>Ranunculus ficaria</i>
Meadow hawkweed (T)	<i>Pilosella caespitosum (Hieracium)</i>
Mediterranean sage	<i>Salvia aethiopsis</i>
Medusahead rye	<i>Taeniatherum caput-medusae</i>
Old man's beard	<i>Clematis vitalba</i>
Parrot feather	<i>Myriophyllum aquaticum</i>
Perennial peavine	<i>Lathyrus latifolius</i>
Perennial pepperweed (T)	<i>Lepidium latifolium</i>
Pheasant's eye	<i>Adonis aestivalis</i>
Poison hemlock	<i>Conium maculatum</i>
Policeman's helmet	<i>Impatiens glandulifera</i>
Puncturevine*	<i>Tribulus terrestris</i>
Purple loosestrife*	<i>Lythrum salicaria</i>
Ragweed	<i>Ambrosia artemisiifolia</i>
Ribbongrass (T)	<i>Phalaris arundinacea var. Picta</i>
Rush skeletonweed* (T)	<i>Chondrilla juncea</i>
Saltcedar* (T)	<i>Tamarix ramosissima</i>
Small broomrape	<i>Orabanche minor</i>
South American waterweed	<i>Egeria densa (Elodea)</i>
Spanish heath	<i>Erica lusitanica</i>
Spikeweed	<i>Hemizonia pungens</i>
Spiny cocklebur	<i>Xanthium spinosum</i>
Spurge laurel	<i>Daphne laureola</i>

\* Targeted for biocontrol

(T) T Designated Weed (See page 4)



(Continued)

Table II: B Listed Weeds

Common Name	Scientific Name
Spurge Leafy* (T) Myrtle	<i>Euphorbia esula</i> <i>Euphorbia myrsinites</i>
St. Johnswort*	<i>Hypericum perforatum</i>
Sulfur cinquefoil	<i>Potentilla recta</i>
Swainsonpea	<i>Sphaerophysa salsula</i>
Tansy ragwort* (T)	<i>Senecio jacobaea</i> ( <i>Jacobaea vulgaris</i> )
Thistle Bull* Canada* Italian Milk* Musk* Scotch Slender-flowered*	<i>Cirsium vulgare</i> <i>Cirsium arvense</i> <i>Carduus pycnocephalus</i> <i>Silybum marianum</i> <i>Carduus nutans</i> <i>Onopordum acanthium</i> <i>Carduus tenuiflorus</i>
Toadflax Dalmatian* (T) Yellow*	<i>Linaria dalmatica</i> <i>Linaria vulgaris</i>
Tree of heaven	<i>Ailanthus altissima</i>
Velvetleaf	<i>Abutilon theophrasti</i>
Primrose Willow Large-flower (T) Water primrose (T) Floating (T)	<i>Ludwigia grandiflora</i> <i>Ludwigia hexapetala</i> <i>Ludwigia peploides</i>
Whitetop	
Hairy	<i>Lepidium pubescens</i>
Lens-podded	<i>Lepidium chalepensis</i>
Whitetop (hoary cress)	<i>Lepidium draba</i>
Yellow archangel	<i>Lamiastrum galeobdolon</i>
Yellow flag iris	<i>Iris pseudacorus</i>
Yellow nutsedge	<i>Cyperus esculentus</i>
Yellow starthistle*	<i>Centaurea solstitialis</i>

\* Targeted for biocontrol

(T) T Designated Weed (See page 4)



# **Oregon**

Department  
of Agriculture

Created 4/2018

**APPENDIX B**

MALHEUR COUNTY NOXIOUS WEED CONTROL  
PUBLIC NOTICE

## Public Notice Malheur County Noxious Weed Control

**WEED DISTRICT:** The entire Malheur County is a weed control district known as the Malheur County Weed District. The weed district is governed by the Malheur County Court upon recommendations from the Malheur County Weed Advisory Board.

**DESIGNATION OF NOXIOUS WEEDS:** Pursuant to ORS 570.575 the following named plants are designated by the Malheur County Court to be injurious to public health, crops, livestock, land, or other property and are noxious.

It is the responsibility of private landowners the County, State and Federal governments to eradicate and control these weeds on their respective jurisdictions. Malheur County has prioritized control and/or eradication of these noxious weeds by “A” “B” & “C” classes, with Class A having the highest priority. Priorities may be adjusted by geographic areas at the recommendation of the Weed Advisory Board.

**CLASS “A” WEED:** A weed of known economic/environmental importance known to occur in the county in very small numbers to make eradication practicable, or not known to occur but its status in surrounding counties makes future occurrence seem imminent.

**ACTION – infestations are subject to mandatory control/eradication where found with possible county assistance when funds are available.**

COMMON NAME	SCIENTIFIC NAME
Austrian Peaweed	<i>Sphaerophysa salusula</i>
Common Crupina	<i>Crupina Vulgaris</i>
Big-Headed knapweed	<i>Centaurea macrocephala</i>
Buffalobur	<i>Solanum rostratum</i>
Camelthorn	<i>Alhagi pseudalhagi</i>
Dalmation toadflax	<i>Centaurea diffusa</i>
Dyers woad	<i>Isatis tinctoria</i>
Featherheaded knapweed	<i>Centaurea trichocephala</i>
Hydrilla	<i>Hydrilla venticillata</i>
Iberian starthistle	<i>Centaurea iberica</i>
Italian thistle	<i>Carduus pycnocephalus</i>
Jimsonweed	<i>Datera stramonium</i>
Johnsongrass	<i>Sorgum halepense</i>
Jointed goatgrass	<i>Aegilops cylindrical</i>

<b>COMMON NAME</b>	<b>SCIENTIFIC NAME</b>
Leafy spurge	<i>Euphorbia esula</i>
Meadow knapweed	<i>Centaurea pratensis</i>
Mediterranean sage	<i>Salvia aethiopis</i>
Milk thistle	<i>Silybum marianum</i>
*Perennial pepperweed*	<i>Lepidium latifolium</i>
Purple nutsedge	<i>Cyperus rotundus</i>
Purple starthistle	<i>Centaurea calcitrapa</i>
Rush skeletonweed	<i>Chondrilla juncea</i>
Short-fringe knapweed	<i>Centaurea nigrescens</i>
Silverleaf knightshade	<i>Solanum elaeagnifolium</i>
Skeletonleaf bursage	<i>Ambrosia tomentosa</i>
Slender-flowered thistle	<i>Carduus tenuiflorus</i>
Smooth distaff thistle	<i>Carthamus baericus</i>
Spiny cocklebur	<i>Xanthium spinosum</i>
Spotted knapweed	<i>Centaurea maculosa</i>
Squarrose knapweed	<i>Centaurea virgata</i>
St. Johnswort (Klamath weed)	<i>Hypericum perforatum</i>
Sulfur cinquefoil	<i>Potentilla recta</i>
Wild proso millet	<i>Panicum miliaceum</i>
Tansy ragwort	<i>Senecio jacobaea</i>
Woolly distaff thistle	<i>Carthamus lanatus</i>
Yellow toadflax	<i>Linaria vulgaris</i>
Yellow starthistle	<i>Centaurea solstitialis</i>

\* Class "A" Weed only in that part of Malheur County south of the road leading from the junction of Malheur County line and McBride Creek Road, west to Leslie Gulch Road, to Lake Owyhee and the area south of the road leading from the Rinehart Ranch to the Crowley Road west to Highway 78, north to the Malheur County line.

**CLASS “B” WEED** – A weed of known economic/environmental importance and of moderate to wide distribution and highly invasive, subject to intensive control or eradication where feasible at the county level.

**ACTION** – Infestations are subject to control where found, with possible county assistance when funds are available. All CLASS”B” weeds are required to be controlled within 50 feet of all property lines, easements and rights of way, pursuant to ORS 570.525

<b>COMMON NAME</b>	<b>SCIENTIFIC NAME</b>
Canada thistle	<i>Cirsium arvense</i>
Houndstongue	<i>Cynoglossum officinale</i>
Musk thistle	<i>Carduus nutans</i>
Perennial pepperweed	<i>Lepidium latifolium</i>
Purple loosestrife	<i>Lythrum salicaria</i>
Scotch thistle	<i>Onopordum acanthium</i>
Hoary cress (White Top)	<i>Lepidium spp.</i>
*Russian knapweed*	<i>Acroptilon repens</i>

\*\* Owners or occupants having Russian knapweed are required to control a minimum 20% of their annual infestation per discreet parcel of land per year. This includes the 50 foot buffer plus additional amounts to total 20% of the infestation.

**CLASS “C” WEED** – A weed of known economic/environmental importance and of general distribution, that is subject to control or eradication as local conditions warrant.

**ACTION** – Infestations treated at landowners discretion.

<b>COMMON NAME</b>	<b>SCIENTIFIC NAME</b>
Bull thistle	<i>Cirsium vulgare</i>
Cheatgrass	<i>Bromus tectorum</i>
Dodder	<i>Cuscutta spp.</i>
Field bindweed	<i>Convolvulus arvensis</i>
Halogeton	<i>Halogeton glomeratus</i>
Kochia	<i>Kochia scoparia</i>
Medusahead rye	<i>Taeniatherum caput-medusae</i>
Poison hemlock	<i>Conium maculatum</i>
Puncturevine	<i>Tribulus terrestris</i>
Quackgrass	<i>Agropyron repens</i>
Common ragweed	<i>Ambrosia artimisiifolia</i>
Salt cedar	<i>Tamarix parviflora</i>
Sweet clover	<i>Melilotus officinalis</i>
Western horsetail	<i>Equisetum arvense</i>
Yellow nutsedge	<i>Cyperus esculentus</i>

## **APPENDIX C**

### **OREGON PESTICIDES OF INTEREST AND CONCERN**



# US-EPA and Oregon Pesticides of Interest (POI) & Concern (POC) (2012-13)

**Red** = a POC<sup>2</sup>; **Yellow** = Higher Priority POI Under Review<sup>1</sup>; **Green** = Evaluated, not a POC;  
**White** = Under Review or Not Evaluated; (example of registered product name)

2,4-D	Acetochlor	Alachlor	Aldicarb	Atrazine ( <i>Aatrex</i> )
Azinphosmethyl ( <i>Guthion</i> )	Benfluralin	Bentazon	Bifenthrin	Bromacil
Carbaryl ( <i>Sevin</i> )	Carbofuran	Chlorothalonil	Chlorpyrifos ( <i>Lorsban</i> )	Clopyralid
Copper pesticides	Cyfluthrin	Cypermethrin	Dacthal	DBCP
Deltamethrin	Diazanone	Dicamba	Dicofol	Dimethenamid
Diuron ( <i>Karmex</i> )	Endosulfan	Esfenvalerate	Ethalfuralin	Ethoprop ( <i>Mocap</i> )
Fenbutatin oxide	Fipronil	Flumetsulam	Glyphosate	Hexazinone
Imazamethabenz	Imazapyr	Imidacloprid	Isoxaflutole	Lambda-cyhalothrin
Lindane	Linuron	Malathion	Mesotrione	Metalaxyl
Metolachlor ( <i>Parallel</i> )	Metribuzin ( <i>Tricor</i> )	Metsulfuron methyl ( <i>Ally</i> )	MSMA	Myclobutanil
Napropamide	Norflurazone	Oxyfluorfen	PCP	Pendimethalin
Permethrin	Phenoxy herbicides	Phosmet	Picloram	Prometon
Prometryn	Propargite	Propiconazole ( <i>Propimax</i> )	Simazine ( <i>Princep</i> )	Sulfometuron Methyl ( <i>Oust</i> )
Tebuthiuron	Terbacil	Thiamethoxam	Tralkoxydim	Triadimeton
Triallate	Triclopyr	Trifluralin		

Pesticide of Interest (POI): potential to occur at concentrations approaching or exceeding an established human health or environmental benchmark or standard

Pesticide of Concern (POC): approaching or exceeding an established human health or environmental benchmark or standard. Usually based on monitoring

## **APPENDIX D**

### **2014 LISTS OF BUREAU OF LAND MANAGEMENT (BLM)-APPROVED HERBICIDES AND ADJUVANTS**

***Herbicides Formulations Approved for Use on Lands  
The BLM Administers in the 17 Western States***

Update: April 4, 2019

Restrictions associated with existing Environmental Impact Statements and individual Environmental Assessments (EA) at the present time, may restrict the use of individual herbicide active ingredients allowed for a particular project within that state. Refer to current EAs prior to selecting the active ingredient(s) and subsequent formulation(s).

Refer to the complete label prior to considering the use of any herbicide formulation. Just because it has a Federal registration, it may not be registered in a particular State, for example California. Label changes can also impact the intended use through, such things as, creation or elimination of Special Local Need (SLN) or 24 (C) registrations, changes in application sites, rates and timing of application, county restrictions, etc.

ACTIVE			EPA REG.
INGREDIENT	TRADE NAME	MANUFACTURER	NUMBER

Aminopyralid	Milestone	Dow AgroSciences	62719-519
Aminopyralid + 2,4-D	ForeFront HL	Dow AgroSciences	62719-630
	GrazonNext HL	Dow AgroSciences	62719-628
Aminopyralid + Clopyralid	Sendero	Dow AgroSciences	62719-645
Aminopyralid + Metsulfuron methyl	Chaparral	Dow AgroSciences	62719-597
	Opensight	Dow AgroSciences	62719-597
Aminopyralid + Triclopyr	Capstone	Dow AgroSciences	62719-572
Bromacil	Alligare Bromacil 80	Alligare, LLC	81927-4
	Ceannard Bromacil 80DF	Ceannard, Inc.	58035-19
	Hyvar X	Bayer Environmental Science	432-1546
	Hyvar X	DuPont Crop Protection	352-287
	Hyvar X-L	Bayer Environmental Science	432-1548
	Hyvar X-L	DuPont Crop Protection	352-346
Bromacil + Diuron	Alligare Bromacil/Diuron 40/40	Alligare, LLC	81927-3
	Ceannard Diuron/Bromacil 80 DF	Ceannard, Inc.	58035-18
	DiBro 2+2	Nufarm Americas Inc.	228-227
	DiBro 4+2	Nufarm Americas Inc.	228-386
	DiBro 4+4	Nufarm Americas Inc.	228-235
	Krovar I DF	Bayer Environmental Science	432-1551
	Krovar I DF	DuPont Crop Protection	352-505
	Weed Blast 4G	SSI Maxim	34913-19
	Weed Blast Res. Weed Cont.	Loveland Products Inc.	34704-576

<b>ACTIVE</b>			<b>EPA REG.</b>
<b>INGREDIENT</b>	<b>TRADE NAME</b>	<b>MANUFACTURER</b>	<b>NUMBER</b>
<b>Chlorsulfuron</b>	Alligare Chlorsulfuron 75	Alligare, LLC	81927-43
	Chlorsulfuron E-Pro 75 WDG	Nufarm Americas Inc.	79676-72
	Nufarm Chlorsulf SPC 75 WDG Herbicide	Nufarm Americas Inc.	228-672
	Telar XP	Bayer Environmental Science	432-1561
	Telar XP	DuPont Crop Protection	352-654
<b>Clopyralid</b>	Alligare Clopyralid 3	Alligare, LLC	81927-14
	CleanSlate	Nufarm Americas Inc.	228-491
	Pyramid R&P	Albaugh, LLC (Albaugh, Inc/Agri Star)	42750-94
	Reclaim	Dow AgroSciences	62719-83
	Spur	Albaugh, LLC (Albaugh, Inc/Agri Star)	42750-89
	Stinger	Dow AgroSciences	62719-73
	Transline	Dow AgroSciences	62719-259
<b>Clopyralid + 2, 4-D</b>	Alligare Cody Herbicide	Alligare, LLC	81927-28
	Commando	Albaugh, LLC (Albaugh, Inc/Agri Star)	42750-92
	Curtail	Dow AgroSciences	62719-48
	Cutback	Nufarm Americas Inc.	71368-72
<b>2, 4-D</b>	2,4-D 4# Amine Weed Killer	UAP-Platte Chem. Co.	34704-120
	2,4-D Amine	Helena Agri-Enterprises, LLC (Helena Chemical Company)	5905-72
	2,4-D Amine 4	Albaugh, LLC (Albaugh, Inc/Agri Star)	42750-19
	2,4-D Amine 4	Helena Agri-Enterprises, LLC (Helena Chemical Company)	42750-19-5905
	2,4-D LV 4	Albaugh, LLC (Albaugh, Inc/Agri Star)	42750-15
	2,4-D LV 6 Ester	Nufarm Americas Inc.	228-95
	2,4-D LV4	Helena Agri-Enterprises, LLC (Helena Chemical Company)	5905-90
	2,4-D LV 6	Albaugh, LLC (Albaugh, Inc/Agri Star)	42750-20
	2,4-D LV6	Helena Agri-Enterprises, LLC (Helena Chemical Company)	42750-20-5905
	2,4-D LV6	Helena Agri-Enterprises, LLC (Helena Chemical Company)	5905-93
	Alliagre 2,4-D Amine	Alligare, LLC	81927-38
	Alligare 2,4-D LV 6	Alligare, LLC	81927-39
	Aqua-Kleen	Nufarm Americas Inc.	71368-4
	Aqua-Kleen	Nufarm Americas Inc.	228-378
	Barrage HF	Helena Agri-Enterprises, LLC (Helena Chemical Company)	5905-529
	Barrage LV Ester	Helena Agri-Enterprises, LLC (Helena Chemical Company)	5905-504
	Base Camp Amine 4	Wilbur-Ellis Co., LLC (Wilbur-Ellis Co.)	71368-1-2935
	Base Camp LV6	Wilbur-Ellis Co., LLC (Wilbur-Ellis Co.)	2935-553
	Broadrange 55	Wilbur-Ellis Co., LLC (Wilbur-Ellis Co.)	2217-813-2935

<b>ACTIVE</b>			<b>EPA REG.</b>
<b>INGREDIENT</b>	<b>TRADE NAME</b>	<b>MANUFACTURER</b>	<b>NUMBER</b>
<b>2,4-D - continued</b>	Clean Amine	Loveland Products Inc.	34704-120
	Clean Crop Amine 4	UAP-Platte Chem. Co.	34704-5 CA
	Clean Crop Low Vol 6 Ester	UAP-Platte Chem. Co.	34704-125
	Clean Crop LV-4 ES	UAP-Platte Chem. Co.	34704-124
	Cornbelt 4 lb. Amine	Van Diest Supply Co.	11773-2
	Cornbelt 4# LoVol Ester	Van Diest Supply Co.	11773-3
	Cornbelt 6# LoVol Ester	Van Diest Supply Co.	11773-4
	D-638	Albaugh, LLC (Albaugh, Inc/Agri Star)	42750-36
	Esteron 99C	Nufarm Americas Inc.	62719-9-71368
	Five Star	Albaugh, LLC (Albaugh, Inc/Agri Star)	42750-49
	Formula 40	Nufarm Americas Inc.	228-357
	Freelexx	Dow AgroSciences	62719-634
	HardBall	Helena Agri-Enterprises, LLC (Helena Chemical Company)	5905-549
	Hi-Dep	PBI Gordon Corp.	2217-703
	Low Vol 4 Ester Weed Killer	Loveland Products Inc.	34704-124
	Low Vol 6 Ester Weed Killer	Loveland Products Inc.	34704-125
	Opti-Amine	Helena Agri-Enterprises, LLC (Helena Chemical Company)	5905-501
	Platoon	Nufarm Americas Inc.	228-145
	Rugged	WinField-United (WinField Solutions, LLC)	1381-247
	Saber	Loveland Products Inc.	34704-803
	Salvo	Loveland Products Inc.	34704-609
	Salvo LV Ester	UAP-Platte Chem. Co.	34704-609
	Savage DS	Loveland Products Inc.	34704-606
	Savage DS	UAP-Platte Chem. Co.	34704-606
	Shredder 2,4-D LV4	WinField-United (WinField Solutions, LLC)	1381-102
	Shredder Amine 4	WinField-United (WinField Solutions, LLC)	1381-103
	Solution Water Soluble	Nufarm Americas Inc.	228-260
	Solve 2,4-D	Albaugh, LLC (Albaugh, Inc/Agri Star)	42750-22
	Unison	Helena Agri-Enterprises, LLC (Helena Chemical Company)	5905-542
	Weedar 64	Nufarm Americas Inc.	71368-1
	WEEDestroy AM-40	Nufarm Americas Inc.	228-145
	Weedone LV-4	Nufarm Americas Inc.	228-139-71368
	Weedone LV-4 Solventless	Nufarm Americas Inc.	71368-14
	Weedone LV-6	Nufarm Americas Inc.	71368-11
	Whiteout 2,4-D	Loveland Products, Inc.	34704-1032
<b>Dicamba</b>	Alligare Cruise Control	Alligare, LLC	42750-40-81927
	Alligare Dicamba 4 Herbicide	Alligare, LLC	81927-55
	Banvel	Arysta LifeScience N.A. Corp.	66330-276
	Clarity	BASF Corporation	7969-137
	Diablo	Nufarm Americas Inc.	228-379
	Dicamba DMA	Albaugh, LLC (Albaugh, Inc/Agri Star)	42750-40

ACTIVE			EPA REG.
INGREDIENT	TRADE NAME	MANUFACTURER	NUMBER
<b>Dicamba - continued</b>	Kam-Ba	Drexel Chemical Company	19713-624
	Rifle	Loveland Products Inc.	34704-861
	Sterling Blue	WinField-United (WinField Solutions, LLC)	7969-137-1381
	Topeka	Rotam North America, Inc.	83100-34-83979
	Vanquish	Syngenta	100-884
	Vanquish Herbicide	Nufarm Americas Inc.	228-397
	Vision	Helena Agri-Enterprises, LLC (Helena Chemical Company)	5905-576
<b>Dicamba + 2, 4-D</b>	Alligare Dicamba + 2,4-D DMA	Alligare, LLC	81927-42
	Brash	WinField-United (WinField Solutions, LLC)	1381-202
	Brush-Rhap	Helena Agri-Enterprises, LLC (Helena Chemical Company)	5905-568
	Cimarron MAX - Part B	Bayer Environmental Science	432-1555
	Cimarron MAX - Part B	DuPont Crop Protection	352-615
	KambaMaster	Nufarm Americas Inc.	71368-34
	Latigo	Helena Agri-Enterprises, LLC (Helena Chemical Company)	5905-564
	Outlaw	Helena Agri-Enterprises, LLC (Helena Chemical Company)	5905-574
	Range Star	Albaugh, LLC (Albaugh, Inc/Agri Star)	42750-55
	Rifle-D	Loveland Products Inc.	34704-869
	Veteran 720	Nufarm Americas Inc.	228-295
	Weedmaster	Nufarm Americas Inc.	71368-34
<b>Dicamba + Diflufenzopyr</b>	Distinct	BASF Corporation	7969-150
	Overdrive	BASF Corporation	7969-150
<b>NOTE: In accordance with the Record of Decision for the Vegetation Treatments Using Herbicides on Bureau of Land Management Lands in 17 Western States Programmatic Environmental Impact Statement (PEIS), the aerial application of this herbicide is prohibited.</b>			
<b>Diquat</b>	Alligare Diquat Herbicide	Alligare, LLC	81927-43
	Diquat E-AG 2L	Nufarm Americas Inc.	79676-75
	Diquat E-Pro 2L	Nufarm Americas Inc.	79676-75
	Diquat SPC 2L Herbicide	Nufarm Americas Inc.	228-675
	Nufarm Diquat 2L Herbicide	Nufarm Americas Inc.	228-675
	Reward	Syngenta Professional Products	100-1091
<b>Diuron</b>	Alligare Diuron 4L	Alligare, LLC	81927-44
	Alligare Diuron 80DF	Alligare, LLC	81927-12
	Ceannard Diuron 80DF	Ceannard, Inc.	58035-16
	Direx 4L	DuPont Crop Protection	352-678
	Direx 4L	Makhteshim Agan of N. A. (ADAMA)	66222-54
	Diuron 4L	Drexel Chemical Company	19713-36

<b>ACTIVE</b>			<b>EPA REG.</b>
<b>INGREDIENT</b>	<b>TRADE NAME</b>	<b>MANUFACTURER</b>	<b>NUMBER</b>
<b>Diuron - continued</b>	Diuron 4L	Loveland Products Inc.	34704-854
	Diuron 4L	Makhteshim Agan of N. A. (ADAMA)	66222-54
	Diuron 80	Drexel Chemical Company	19713-274
	Diuron 80 WDG	Loveland Products Inc.	34704-648
	Diuron 80DF	WinField-United (WinField Solutions, LLC)	9779-318
	Diuron 80WDG	UAP-Platte Chem. Co.	34704-648
	Karmex DF	DuPont Crop Protection	352-692
	Karmex DF	Makhteshim Agan of N. A. (ADAMA)	66222-51
	Karmex IWC	DuPont Crop Protection	352-692
	Karmex XP	DuPont Crop Protection	352-692
	Parrot 4L	Makhteshim Agan of N. A. (ADAMA)	66222-54
	Parrot DF	Makhteshim Agan of N. A. (ADAMA)	66222-51
<b>Fluridone</b>	Alligare Fluridone	Alligare, LLC	81927-45
	Avast!	SePRO	67690-30
	Fluridone 4L	Albaugh, LLC (Albaugh, Inc/Agri Star)	42750-280
	Sonar AS	SePRO	67690-4
	Sonar Precision Release	SePRO	67690-12
	Sonar Q	SePRO	67690-3
	Sonar SRP	SePRO	67690-3
<b>Fluroxypyr</b>	Alligare Flagstaff	Alligare, LLC	81927-61
	Alligare Fluroxypyr	Alligare, LLC	66330-385-81927
	Comet Selective	Nufarm Americas Inc.	71368-87
	Vista XRT	Dow AgroSciences	62719-586
<b>Fluroxypyr + 2,4-D + Dicamba</b>	E-2 Herbicide	Nufarm Americas Inc.	228-442
<b>Fluroxypyr + Clopyralid</b>	Truslate Selective Herbicide	Nufarm Americas Inc.	71368-86
<b>Fluroxypyr + Picloram</b>	Alligare Triumph XTR Herbicide	Alligare, LLC	81927-64
	Surmount	Dow AgroSciences	62719-480
	Trooper Pro	Nufarm Americas Inc.	228-599
<b>Fluroxypyr + Triclopyr</b>	Alligare Cleargraze Pasture Herbicide	Alligare, LLC	81927-65
	PastureGard	Dow AgroSciences	62719-637
<b>Glyphosate</b>	Accord Concentrate	Dow AgroSciences	62719-324
	Accord SP	Dow AgroSciences	62719-322
	Accord XRT	Dow AgroSciences	62719-517
	Accord XRT II	Dow AgroSciences	62719-556
	Alligare Dryphosate 75SG	Alligare, LLC	81927-60
	Alligare Glyphosate 4 PLUS	Alligare, LLC	81927-9
	Alligare Glyphosate 5.4	Alligare, LLC	81927-8
	Aqua Neat	Nufarm Americas Inc.	228-365

<b>ACTIVE</b>			<b>EPA REG.</b>
<b>INGREDIENT</b>	<b>TRADE NAME</b>	<b>MANUFACTURER</b>	<b>NUMBER</b>
<b>Glyphosate - continued</b>	Aqua Star	Albaugh, LLC (Albaugh, Inc/Agri Star)	42750-59
	Aquamaster	Monsanto	524-343
	AquaPro Aquatic Herbicide	SePRO Corporation	62719-324-67690
	Buccaneer	Tenkoz	55467-10
	Buccaneer Plus	Tenkoz	55467-9
	Credit Xtreme	Nufarm Americas Inc.	71368-81
	Foresters	Nufarm Americas Inc.	228-381
	Gly Star Gold	Albaugh, LLC (Albaugh, Inc/Agri Star)	42750-61
	Gly Star Original	Albaugh, LLC (Albaugh, Inc/Agri Star)	42750-60
	Gly Star Plus	Albaugh, LLC (Albaugh, Inc/Agri Star)	42750-61
	Gly Star Pro	Albaugh, LLC (Albaugh, Inc/Agri Star)	42750-61
	Gly-4	Universal Crop Protection Alliance	42750-60-72693
	Gly-4 Plus	Universal Crop Protection Alliance	72693-1
	Gly-4 Plus	Universal Crop Protection Alliance	42750-61-72693
	GlyphoMate 41	PBI/Gordon Corporation	2217-847
	Glypro	Dow AgroSciences	62719-324
	Glypro Plus	Dow AgroSciences	62719-322
	Honcho	Monsanto	524-445
	Honcho Plus	Monsanto	524-454
	Imitator Aquatic	Drexel Chemical Company	19713-623
	Imitator DA	Drexel Chemical Company	19713-586
	Imitator Plus	Drexel Chemical Company	19713-526
	KleenUp Pro	Loveland Products, Inc.	34704-890
	Mad Dog Plus	Loveland Products, Inc.	34704-890
	Makaze	Loveland Products, Inc.	34704-890
	Mirage	Loveland Products Inc.	34704-889
	Mirage Herbicide	UAP-Platte Chem. Co.	524-445-34704
	Mirage Plus	Loveland Products Inc.	34704-890
	Rattler	Helena Agri-Enterprises, LLC (Helena Chemical Company)	524-445-5905
	Razor	Nufarm Americas Inc.	228-366
	Razor Pro	Nufarm Americas Inc.	228-366
	Rodeo	Dow AgroSciences	62719-324
	Roundup Custom	Monsanto	524-343
	Roundup Original	Monsanto	524-445
	Roundup Original II	Monsanto	524-454
	Roundup Original II CA	Monsanto	524-475
	Roundup PROMAX	Monsanto	524-579
	Roundup PRO	Monsanto	524-475
	Roundup PRO Concentrate	Monsanto	524-529
	Roundup PRO Dry	Monsanto	524-505
	Showdown	Helena Agri-Enterprises, LLC (Helena Chemical Company)	71368-25-5905



<b>ACTIVE</b>			<b>EPA REG.</b>
<b>INGREDIENT</b>	<b>TRADE NAME</b>	<b>MANUFACTURER</b>	<b>NUMBER</b>
<b>Glyphosate + 2, 4-D</b>	Campaign	Monsanto	524-351
	Imitator + 2,4-D	Drexel Chemical Company	19713-635
	Landmaster BW	Albaugh, LLC (Albaugh, Inc/Agri Star)	42570-62
	Landmaster BW	Monsanto	524-351
<b>Hexazinone</b>	Pronone 10G	Pro-Serve	33560-21
	Pronone 25G	Pro-Serve	33560-45
	Pronone MG	Pro-Serve	33560-21
	Pronone Power Pellet	Pro-Serve	33560-41
	Velosa	Helena Agri-Enterprises, LLC (Helena Chemical Company)	5905-579
	Velpar DF	DuPont Crop Protection	352-581
	Velpar DF VU	Bayer Environmental Science	432-1576
	Velpar L	DuPont Crop Protection	352-392
	Velpar L VU	Bayer Environmental Science	432-1573
	Velpar ULW	DuPont Crop Protection	352-450
	<b>Hexazinone + Sulfometuron methyl</b>	Oustar	Bayer Environmental Science
Oustar		DuPont Crop Protection	352-603
Westar		Bayer Environmental Science	432-1558
Westar		DuPont Crop Protection	352-626
<b>NOTE: In accordance with the Record of Decision for the <i>Vegetation Treatments Using Herbicides on Bureau of Land Management Lands in 17 Western States Programmatic Environmental Impact Statement (PEIS)</i>, the aerial application of this herbicide is prohibited.</b>			
<b>Imazapic</b>	Alligare Panoramic 2SL	Alligare, LLC	66222-141-81927
	Nufarm Imazapic 2SL	Nufarm Americas Inc.	71368-99
	Open Range G	Wilbur-Ellis Co., LLC (Wilbur-Ellis Co.)	2935-557
	Plateau	BASF Corporation	241-365
<b>Imazapyr</b>	Alligare Ecomazapyr 2SL	Alligare, LLC	81927-22
	Alligare Imazapyr 4SL	Alligare, LLC	81927-24
	Alligare Rotary 2 SL	Alligare, LLC	
	Arsenal	BASF Corporation	241-346
	Arsenal Applicators Conc.	BASF Corporation	241-299
	Arsenal PowerLine	BASF Corporation	241-431
	Chopper	BASF Corporation	241-296
	EZ-JECT Copperhead Herbicide Shells	EZ-JECT, Inc.	83220-2
	Habitat	BASF Corporation	241-426
	Habitat Herbicide	SePRO	241-426-67690
	Polaris	Nufarm Americas Inc.	228-534
	Polaris AC	Nufarm Americas Inc.	241-299-228
	Polaris AC	Nufarm Americas Inc.	228-480
Polaris AC Complete	Nufarm Americas Inc.	228-570	

ACTIVE			EPA REG.
INGREDIENT	TRADE NAME	MANUFACTURER	NUMBER
<b>Imazapyr - continued</b>	Polaris AQ	Nufarm Americas Inc.	241-426-228
	Polaris Herbicide	Nufarm Americas Inc.	241-346-228
	Polaris RR	Nufarm Americas Inc.	241-273-228
	Polaris SP	Nufarm Americas Inc.	228-536
	Polaris SP	Nufarm Americas Inc.	241-296-228
	SSI Maxim Arsenal 0.5G	SSI Maxim Co., Inc.	34913-23
	SSI Maxim Arsenal 5.0 G	SSI Maxim Co., Inc.	34913-24
	Stalker	BASF Corporation	241-398
<b>Imazapyr + Diuron</b>	Alligare Mojave 70 EG	Alligare, LLC	81927-25
	Imazuron	Nufarm Americas Inc.	228-654
	Sahara DG	BASF Corporation	241-372
	SSI Maxim Topside 2.5G	SSI Maxim Co., Inc.	34913-22
<b>Imazapyr + Metsulfuron methyl</b>	Lineage Clearstand	Bayer Environmental Science	432-1578
	Lineage Clearstand	DuPont Crop Protection	352-766
<b>Imazapyr + Sulfometuron methyl + Metsulfuron methyl</b>	Lineage HWC	Bayer Environmental Science	432-1577
	Lineage HWC	DuPont Crop Protection	352-765
	Lineage Prep	Bayer Environmental Science	432-1579
	Lineage Prep	DuPont Crop Protection	352-767
<b>NOTE: In accordance with the Record of Decision for the <i>Vegetation Treatments Using Herbicides on Bureau of Land Management Lands in 17 Western States Programmatic Environmental Impact Statement (PEIS)</i>, the aerial application of this herbicide is prohibited.</b>			
<b>Metsulfuron methyl</b>	Alligare MSM 60	Alligare, LLC	81927-7
	AmTide MSM 60DF Herbicide	AmTide, LLC	83851-3
	Cimarron MAX - Part A	Bayer Environmental Science	432-1555
	Cimarron MAX - Part A	DuPont Crop Protection	352-615
	Escort XP	Bayer Environmental Science	432-1549
	Escort XP	DuPont Crop Protection	352-439
	Patriot	Nufarm Americas Inc.	228-391
	PureStand	Nufarm Americas Inc.	71368-38
	Rometsol	Rotam North America, Inc.	831000-2-83979
	<b>Metsulfuron methyl + Chlorsulfuron</b>	Cimarron Plus	Bayer Environmental Science
Cimarron Plus		DuPont Crop Protection	352-670
Cimarron X-tra		DuPont Crop Protection	352-669
<b>Picloram</b>	Alligare Picloram 22K	Alligare, LLC	81927-18
	Grazon PC	Dow AgroSciences	62719-181
	OutPost 22K	Dow AgroSciences	62719-6
	Tordon 22K	Dow AgroSciences	62719-6
	Tordon K	Dow AgroSciences	62719-17



ACTIVE			EPA REG.
INGREDIENT	TRADE NAME	MANUFACTURER	NUMBER
Sulfometuron methyl + Metsulfuron methyl	Alligare SFM Extra	Alligare, LLC	81927-5
	Oust Extra	Bayer Environmental Science	432-1557
	Oust Extra	DuPont Crop Protection	352-622
	Spyder Extra Selective	Nufarm Americas Inc.	228-690
<p><b>NOTE: In accordance with the Record of Decision for the <i>Vegetation Treatments Using Herbicides on Bureau of Land Management Lands in 17 Western States Programmatic Environmental Impact Statement (PEIS)</i>, the aerial application of this herbicide is prohibited.</b></p>			
Tebuthiuron	Alligare Tebuthiuron 20 P	Alligare, LLC	81927-41
	Alligare Tebuthiuron 80 WG	Alligare, LLC	81927-37
	Spike 20P	Dow AgroSciences	62719-121
	Spike 80DF	Dow AgroSciences	62719-107
	SpraKil S-5 Granules	SSI Maxim Co., Inc.	34913-10
Tebuthiuron + Diuron	SpraKil SK-13 Granular	SSI Maxim Co., Inc.	34913-15
	SpraKil SK-26 Granular	SSI Maxim Co., Inc.	34913-16
Triclopyr	Alligare Boulder 6.3	Alligare, LLC	81927-54
	Alligare Triclopyr 4	Alligare, LLC	81927-11
	Alligare Triclopyr 3	Alligare, LLC	81927-13
	Element 3A	Dow AgroSciences	62719-37
	Element 4	Dow AgroSciences	62719-40
	Forestry Garlon XRT	Dow AgroSciences	62719-553
	Garlon 3A	Dow AgroSciences	62719-37
	Garlon 4	Dow AgroSciences	62719-40
	Garlon 4 Ultra	Dow AgroSciences	62719-527
	Pathfinder II	Dow AgroSciences	62719-176
	Relegate	Nufarm Americas Inc.	228-521
	Relegate RTU	Nufarm Americas Inc.	228-522
	Remedy	Dow AgroSciences	62719-70
	Remedy Ultra	Dow AgroSciences	62719-552
	Renovate 3	SePRO Corporation	62719-37-67690
	Renovate OTF	SePRO Corporation	67690-42
	Tahoe 3A	Nufarm Americas Inc.	228-520
	Tahoe 4E	Nufarm Americas Inc.	228-385
	Tahoe 4E Herbicide	Nufarm Americas Inc.	228-517
	Triclopyr RTU	Albaugh, LLC (Albaugh, Inc/Agri Star)	42750-173
Trycera	Helena Agri-Enterprises, LLC (Helena Chemical Company)	5906-580	
Vastlan	Dow AgroSciences	62719-687	



**HERBICIDE INFORMATION SUMMARY**

**April 4, 2019**

Common Name	Manufacturer Trade Name	Manufacturer Name	EPA Reg. Number	Concentration	Units of Concentration	WSSA Herbicide Resistance Code
Aminopyralid	Milestone	Dow AgroSciences	62719-519	2.0	Pounds Acid Equivalent Per Gallon	Group 4
Aminopyralid + 2,4-D	ForeFront HL	Dow AgroSciences	62719-630	0.41 + 3.33	Pounds Acid Equivalent Per Gallon, Respectively	Group 4
Aminopyralid + 2,4-D	GrazonNext HL	Dow AgroSciences	62719-628	0.41 + 3.33	Pounds Acid Equivalent Per Gallon, Respectively	Group 4
Aminopyralid + Clopyralid	Sendero	Dow AgroSciences	62719-645	0.5 + 2.3	Pounds Acid Equivalent Per Gallon, Respectively	Group 4
Aminopyralid + Metsulfuron methyl	Chaparral	Dow AgroSciences	62719-597	52.5 + 9.45	Percent Acid Equivalent + Percent Active Ingredient, Respectively	Groups 4 + 2
Aminopyralid + Metsulfuron methyl	Opensight	Dow AgroSciences	62719-597	52.5 + 9.45	Percent Acid Equivalent + Percent Active Ingredient, Respectively	Groups 4 + 2
Aminopyralid + Triclopyr	Capstone	Dow AgroSciences	62719-572	0.1 + 1.0	Pounds Acid Equivalent Per Gallon, Respectively	Group 4
Bromacil	Alligare Bromacil 80	Alligare, LLC	81927-4	80	Percent Active Ingredient	Group 5
Bromacil	Ceannard Bromacil 80DF	Ceannard, Inc.	58035-19	80	Percent Active Ingredient	Group 5
Bromacil	Hyvar X	Bayer Environmental Science	432-1546	80	Percent Active Ingredient	Group 5
Bromacil	Hyvar X	DuPont Crop Protection	352-287	80	Percent Active Ingredient	Group 5
Bromacil	Hyvar X-L	Bayer Environmental Science	432-1548	2.0	Pounds Active Ingredient Per Gallon	Group 5
Bromacil	Hyvar X-L	DuPont Crop Protection	352-346	2.0	Pounds Active Ingredient Per Gallon	Group 5
Bromacil + Diuron	Alligare Bromacil/Diuron 40/40	Alligare, LLC	81927-3	40 + 40	Percent Active Ingredient, Respectively	Groups 5 + 7
Bromacil + Diuron	Ceannard Diuron/Bromacil 80 DF	Ceannard, Inc.	58035-18	40 + 40	Percent Active Ingredient, Respectively	Groups 5 + 7
Bromacil + Diuron	DiBro 2+2	Nufarm Americas Inc.	228-227	2 + 2	Percent Active Ingredient, Respectively	Groups 5 + 7
Bromacil + Diuron	DiBro 4+2	Nufarm Americas Inc.	228-386	4 + 2	Percent Active Ingredient, Respectively	Groups 5 + 7
Bromacil + Diuron	DiBro 4+4	Nufarm Americas Inc.	228-235	4 + 4	Percent Active Ingredient, Respectively	Groups 5 + 7
Bromacil + Diuron	Krovar I DF	Bayer Environmental Science	432-1551	40 + 40	Percent Active Ingredient, Respectively	Groups 5 + 7
Bromacil + Diuron	Krovar I DF	DuPont Crop Protection	352-505	40 + 40	Percent Active Ingredient, Respectively	Groups 5 + 7
Bromacil + Diuron	Weed Blast 4G	SSI Maxim	34913-19	2 + 2	Percent Active Ingredient, Respectively	Groups 5 + 7
Bromacil + Diuron	Weed Blast Res. Weed Cont.	Loveland Products Inc.	34704-576	4 + 4	Percent Active Ingredient, Respectively	Groups 5 + 7
Chlorsulfuron	Alligare Chlorsulfuron 75	Alligare, LLC	81927-43	75	Percent Active Ingredient	Group 2
Chlorsulfuron	Chlorsulfuron E-Pro 75 WDG	Nufarm Americas Inc.	79676-72	75	Percent Active Ingredient	Group 2
Chlorsulfuron	Nufarm Chlorsulf SPC 75 WDG Herbicide	Nufarm Americas Inc.	228-672	75	Percent Active Ingredient	Group 2
Chlorsulfuron	Telar XP	Bayer Environmental Science	432-1561	75	Percent Active Ingredient	Group 2
Chlorsulfuron	Telar XP	DuPont Crop Protection	352-654	75	Percent Active Ingredient	Group 2
Clopyralid	Alligare Clopyralid 3	Alligare, LLC	81927-14	3.0	Pounds Acid Equivalent Per Gallon	Group 4
Clopyralid	CleanSlate	Nufarm Americas Inc.	228-491	3.0	Pounds Acid Equivalent Per Gallon	Group 4
Clopyralid	Pyramid R&P	Albaugh, LLC (Albaugh, Inc/Agri Star)	42750-94	3.0	Pounds Acid Equivalent Per Gallon	Group 4
Clopyralid	Reclaim	Dow AgroSciences	62719-83	3.0	Pounds Acid Equivalent Per Gallon	Group 4
Clopyralid	Spur	Albaugh, LLC (Albaugh, Inc/Agri Star)	42750-89	3.0	Pounds Acid Equivalent Per Gallon	Group 4
Clopyralid	Stinger	Dow AgroSciences	62719-73	3.0	Pounds Acid Equivalent Per Gallon	Group 4
Clopyralid	Transline	Dow AgroSciences	62719-259	3.0	Pounds Acid Equivalent Per Gallon	Group 4
Clopyralid + 2, 4-D	Alligare Cody Herbicide	Alligare, LLC	81927-28	0.38 + 2.0	Pounds Acid Equivalent Per Gallon, Respectively	Groups 4 + 4
Clopyralid + 2, 4-D	Commando	Albaugh, LLC (Albaugh, Inc/Agri Star)	42750-92	0.38 + 2.0	Pounds Acid Equivalent Per Gallon, Respectively	Groups 4 + 4
Clopyralid + 2, 4-D	Curtail	Dow AgroSciences	62719-48	0.38 + 2.0	Pounds Acid Equivalent Per Gallon, Respectively	Groups 4 + 4
Clopyralid + 2, 4-D	Cutback	Nufarm Americas Inc.	71368-72	0.38 + 2.0	Pounds Acid Equivalent Per Gallon, Respectively	Groups 4 + 4
2, 4-D	2,4-D 4# Amine Weed Killer	UAP-Platte Chem. Co.	34704-120	3.74	Pounds Acid Equivalent Per Gallon	Group 4
2, 4-D	2,4-D Amine	Helena Agri-Enterprises, LLC (Helena Chemical Company)	5905-72	3.76	Pounds Acid Equivalent Per Gallon	Group 4
2, 4-D	2,4-D Amine 4	Albaugh, LLC (Albaugh, Inc/Agri Star)	42750-19	3.8	Pounds Acid Equivalent Per Gallon	Group 4

2, 4-D	2,4-D Amine 4	Helena Agri-Enterprises, LLC (Helena Chemical Company)	42750-19-5905	3.8	Pounds Acid Equivalent Per Gallon	Group 4
2, 4-D	2,4-D LV 4	Albaugh, LLC (Albaugh, Inc/Agri Star)	42750-15	3.8	Pounds Acid Equivalent Per Gallon	Group 4
2, 4-D	2,4-D LV 6	Albaugh, LLC (Albaugh, Inc/Agri Star)	42750-20	5.5	Pounds Acid Equivalent Per Gallon	Group 4
2, 4-D	2,4-D LV 6 Ester	Nufarm Americas Inc.	228-95	5.5	Pounds Acid Equivalent Per Gallon	Group 4
2, 4-D	2,4-D LV4	Helena Agri-Enterprises, LLC (Helena Chemical Company)	5905-90	3.8	Pounds Acid Equivalent Per Gallon	Group 4
2, 4-D	2,4-D LV6	Helena Agri-Enterprises, LLC (Helena Chemical Company)	42750-20-5905	5.5	Pounds Acid Equivalent Per Gallon	Group 4
2, 4-D	2,4-D LV6	Helena Agri-Enterprises, LLC (Helena Chemical Company)	5905-93	5.8	Pounds Acid Equivalent Per Gallon	Group 4
2, 4-D	Alligare 2,4-D Amine	Alligare, LLC	81927-38	3.8	Pounds Acid Equivalent Per Gallon	Group 4
2, 4-D	Alligare 2,4-D LV 6	Alligare, LLC	81927-39	5.5	Pounds Acid Equivalent Per Gallon	Group 4
2, 4-D	Aqua-Kleen	Nufarm Americas Inc.	71368-4	19.0	Percent Acid Equivalent	Group 4
2, 4-D	Aqua-Kleen	Nufarm Americas Inc.	228-378	19.0	Percent Acid Equivalent	Group 4
2, 4-D	Barrage HF	Helena Agri-Enterprises, LLC (Helena Chemical Company)	5905-529	4.7	Pounds Acid Equivalent Per Gallon	Group 4
2, 4-D	Barrage LV Ester	Helena Agri-Enterprises, LLC (Helena Chemical Company)	5905-504	4.7	Pounds Acid Equivalent Per Gallon	Group 4
2, 4-D	Base Camp Amine 4	Wilbur-Ellis Co., LLC (Wilbur-Ellis Co.)	71368-1-2935	3.8	Pounds Acid Equivalent Per Gallon	Group 4
2, 4-D	Base Camp LV6	Wilbur-Ellis Co., LLC (Wilbur-Ellis Co.)	2935-553	5.5	Pounds Acid Equivalent Per Gallon	Group 4
2, 4-D	Broadrange 55	Wilbur-Ellis Co., LLC (Wilbur-Ellis Co.)	2217-813-2935	5.03	Pounds Acid Equivalent Per Gallon	Group 4
2, 4-D	Clean Amine	Loveland Products Inc.	34704-120	3.74	Pounds Acid Equivalent Per Gallon	Group 4
2, 4-D	Clean Crop Amine 4	UAP-Platte Chem. Co.	34704-5 CA	3.8	Pounds Acid Equivalent Per Gallon	Group 4
2, 4-D	Clean Crop Low Vol 6 Ester	UAP-Platte Chem. Co.	34704-125	5.6	Pounds Acid Equivalent Per Gallon	Group 4
2, 4-D	Clean Crop LV-4 ES	UAP-Platte Chem. Co.	34704-124	3.8	Pounds Acid Equivalent Per Gallon	Group 4
2, 4-D	Cornbelt 4 lb. Amine	Van Diest Supply Co.	11773-2	3.8	Pounds Acid Equivalent Per Gallon	Group 4
2, 4-D	Cornbelt 4# LoVol Ester	Van Diest Supply Co.	11773-3	3.8	Pounds Acid Equivalent Per Gallon	Group 4
2, 4-D	Cornbelt 6# LoVol Ester	Van Diest Supply Co.	11773-4	5.6	Pounds Acid Equivalent Per Gallon	Group 4
2, 4-D	D-638	Albaugh, LLC (Albaugh, Inc/Agri Star)	42750-36	2.8	Pounds Acid Equivalent Per Gallon	Group 4
2, 4-D	Esteron 99C	Nufarm Americas Inc.	62719-9-71368	3.8	Pounds Acid Equivalent Per Gallon	Group 4
2, 4-D	Five Star	Albaugh, LLC (Albaugh, Inc/Agri Star)	42750-49	5.0	Pounds Acid Equivalent Per Gallon	Group 4
2, 4-D	Formula 40	Nufarm Americas Inc.	228-357	3.67	Pounds Acid Equivalent Per Gallon	Group 4
2, 4-D	Freelexx	Dow AgroSciences	62719-634	3.8	Pounds Acid Equivalent Per Gallon	Group 4
2, 4-D	HardBall	Helena Agri-Enterprises, LLC (Helena Chemical Company)	5905-549	1.74	Pounds Acid Equivalent Per Gallon	Group 4
2, 4-D	Hi-Dep	PBI Gordon Corp.	2217-703	3.8	Pounds Acid Equivalent Per Gallon	Group 4
2, 4-D	Low Vol 4 Ester Weed Killer	Loveland Products Inc.	34704-124	3.8	Pounds Acid Equivalent Per Gallon	Group 4
2, 4-D	Low Vol 6 Ester Weed Killer	Loveland Products Inc.	34704-125	5.6	Pounds Acid Equivalent Per Gallon	Group 4
2, 4-D	Opti-Amine	Helena Agri-Enterprises, LLC (Helena Chemical Company)	5905-501	3.8	Pounds Acid Equivalent Per Gallon	Group 4
2, 4-D	Platoon	Nufarm Americas Inc.	228-145	3.8	Pounds Acid Equivalent Per Gallon	Group 4
2, 4-D	Rugged	WinField-United (WinField Solutions, LLC)	1381-247	3.5	Pounds Acid Equivalent Per Gallon	Group 4
2, 4-D	Saber	Loveland Products Inc.	34704-803	3.8	Pounds Acid Equivalent Per Gallon	Group 4
2, 4-D	Salvo	Loveland Products Inc.	34704-609	5	Pounds Acid Equivalent Per Gallon	Group 4
2, 4-D	Salvo LV Ester	UAP-Platte Chem. Co.	34704-609	5.0	Pounds Acid Equivalent Per Gallon	Group 4
2, 4-D	Savage DS	Loveland Products Inc.	34704-606	78.9	Percent Acid Equivalent	Group 4
2, 4-D	Savage DS	UAP-Platte Chem. Co.	34704-606	78.9	Percent Acid Equivalent	Group 4
2, 4-D	Shredder 2,4-D LV4	WinField-United (WinField Solutions, LLC)	1381-102	3.8	Pounds Acid Equivalent Per Gallon	Group 4
2, 4-D	Shredder Amine 4	WinField-United (WinField Solutions, LLC)	1381-103	3.8	Pounds Acid Equivalent Per Gallon	Group 4
2, 4-D	Solution Water Soluble	Nufarm Americas Inc.	228-260	80.5	Percent Acid Equivalent	Group 4
2, 4-D	Solve 2,4-D	Albaugh, LLC (Albaugh, Inc/Agri Star)	42750-22	3.76	Pounds Acid Equivalent Per Gallon	Group 4
2, 4-D	Unison	Helena Agri-Enterprises, LLC (Helena Chemical Company)	5905-542	1.74	Pounds Acid Equivalent Per Gallon	Group 4
2, 4-D	Weedar 64	Nufarm Americas Inc.	71368-1	3.8	Pounds Acid Equivalent Per Gallon	Group 4
2, 4-D	WEEDestroy AM-40	Nufarm Americas Inc.	228-145	3.8	Pounds Acid Equivalent Per Gallon	Group 4
2, 4-D	Weedone LV-4	Nufarm Americas Inc.	228-139-71368	3.84	Pounds Acid Equivalent Per Gallon	Group 4
2, 4-D	Weedone LV-4 Solventless	Nufarm Americas Inc.	71368-14	3.8	Pounds Acid Equivalent Per Gallon	Group 4
2, 4-D	Weedone LV-6	Nufarm Americas Inc.	71368-11	5.4	Pounds Acid Equivalent Per Gallon	Group 4
2, 4-D	Whiteout 2,4-D	Loveland Products, Inc.	34704-1032	3.7	Pounds Acid Equivalent Per Gallon	Group 4
Dicamba	Alligare Cruise Control	Alligare, LLC	42750-40-81927	4.0	Pounds Acid Equivalent Per Gallon	Group 4
Dicamba	Alligare Dicamba 4 Herbicide	Alligare, LLC	81927-55	5.0	Pounds Acid Equivalent Per Gallon	Group 4
Dicamba	Banvel	Arysta LifeScience N.A. Corp.	66330-276	4.0	Pounds Acid Equivalent Per Gallon	Group 4
Dicamba	Clarity	BASF Corporation	7969-137	4.0	Pounds Acid Equivalent Per Gallon	Group 4

Dicamba	Diablo	Nufarm Americas Inc.	228-379	4.0	Pounds Acid Equivalent Per Gallon	Group 4
Dicamba	Dicamba DMA	Albaugh, LLC (Albaugh, Inc/Agri Star)	42750-40	4.0	Pounds Acid Equivalent Per Gallon	Group 4
Dicamba	Kam-Ba	Drexel Chemical Company	19713-624	4.0	Pounds Acid Equivalent Per Gallon	Group 4
Dicamba	Rifle	Loveland Products Inc.	34704-861	4.0	Pounds Acid Equivalent Per Gallon	Group 4
Dicamba	Sterling Blue	WinField-United (WinField Solutions, LLC)	7969-137-1381	4.0	Pounds Acid Equivalent Per Gallon	Group 4
Dicamba	Topeka	Rotam North America, Inc.	83100-34-83979	4.0	Pounds Acid Equivalent Per Gallon	Group 4
Dicamba	Vanquish	Syngenta	100-884	4.0	Pounds Acid Equivalent Per Gallon	Group 4
Dicamba	Vanquish Herbicide	Nufarm Americas Inc.	228-397	4.0	Pounds Acid Equivalent Per Gallon	Group 4
Dicamba	Vision	Helena Agri-Enterprises, LLC (Helena Chemical Company)	5905-576	4.0	Pounds Acid Equivalent Per Gallon	Group 4
Dicamba + 2, 4-D	Alligare Dicamba + 2,4-D DMA	Alligare, LLC	81927-42	1.0 + 2.87	Pounds Acid Equivalent Per Gallon, Respectively	Groups 4 + 4
Dicamba + 2, 4-D	Brash	WinField-United (WinField Solutions, LLC)	1381-202	1.0 + 2.87	Pounds Acid Equivalent Per Gallon, Respectively	Groups 4 + 4
Dicamba + 2, 4-D	Brush-Rhap	Helena Agri-Enterprises, LLC (Helena Chemical Company)	5905-568	1.8 + 2.4	Pounds Acid Equivalent Per Gallon, Respectively	Groups 4 + 4
Dicamba + 2, 4-D	Cimarron MAX - Part B	Bayer Environmental Science	432-1555	1.0 + 2.87	Pounds Acid Equivalent Per Gallon, Respectively	Groups 4 + 4
Dicamba + 2, 4-D	Cimarron MAX - Part B	DuPont Crop Protection	352-615	1.0 + 2.87	Pounds Acid Equivalent Per Gallon, Respectively	Groups 4 + 4
Dicamba + 2, 4-D	KambaMaster	Nufarm Americas Inc.	71368-34	1.0 + 2.87	Pounds Acid Equivalent Per Gallon, Respectively	Groups 4 + 4
Dicamba + 2, 4-D	Latigo	Helena Agri-Enterprises, LLC (Helena Chemical Company)	5905-564	1.8 + 2.4	Pounds Acid Equivalent Per Gallon, Respectively	Groups 4 + 4
Dicamba + 2, 4-D	Outlaw	Helena Agri-Enterprises, LLC (Helena Chemical Company)	5905-574	1.09 + 1.45	Pounds Acid Equivalent Per Gallon, Respectively	Groups 4 + 4
Dicamba + 2, 4-D	Range Star	Albaugh, LLC (Albaugh, Inc/Agri Star)	42750-55	1.0 + 2.87	Pounds Acid Equivalent Per Gallon, Respectively	Groups 4 + 4
Dicamba + 2, 4-D	Rifle-D	Loveland Products Inc.	34704-869	1.0 + 2.88	Pounds Acid Equivalent Per Gallon, Respectively	Groups 4 + 4
Dicamba + 2, 4-D	Veteran 720	Nufarm Americas Inc.	228-295	1.0 + 1.9	Pounds Acid Equivalent Per Gallon, Respectively	Groups 4 + 4
Dicamba + 2, 4-D	Weedmaster	Nufarm Americas Inc.	71368-34	1.0 + 2.87	Pounds Acid Equivalent Per Gallon, Respectively	Groups 4 + 4
Dicamba + Diflufenzopyr	Distinct	BASF Corporation	7969-150	50 + 20	Percent Acid Equivalent, Respectively	Groups 4 + 19
Dicamba + Diflufenzopyr	Overdrive	BASF Corporation	7969-150	50 + 20	Percent Acid Equivalent, Respectively	Groups 4 + 19
Diquat	Alligare Diquat Herbicide	Alligare, LLC	81927-35	3.73	Pounds Active Ingredient Per Gallon	Group 22
Diquat	Diquat E-AG 2L	Nufarm Americas Inc.	79676-75	3.73	Pounds Active Ingredient Per Gallon	Group 22
Diquat	Diquat E-Pro 2L	Nufarm Americas Inc.	79676-75	3.73	Pounds Active Ingredient Per Gallon	Group 22
Diquat	Diquat SPC 2L Herbicide	Nufarm Americas Inc.	228-675	3.73	Pounds Active Ingredient Per Gallon	Group 22
Diquat	Nufarm Diquat 2L Herbicide	Nufarm Americas Inc.	228-675	3.73	Pounds Active Ingredient Per Gallon	Group 22
Diquat	Reward	Syngenta Professional Prod.	100-1091	3.73	Pounds Active Ingredient Per Gallon	Group 22
Diuron	Alligare Diuron 4L	Alligare, LLC	81927-44	4.0	Pounds Active Ingredient Per Gallon	Group 7
Diuron	Alligare Diuron 80DF	Alligare, LLC	81927-12	80	Percent Active Ingredient	Group 7
Diuron	Ceannard Diuron 80DF	Ceannard, Inc.	58035-16	80	Percent Active Ingredient	Group 7
Diuron	Direx 4L	DuPont Crop Protection	352-678	4.0	Pounds Active Ingredient Per Gallon	Group 7
Diuron	Direx 4L	Makhteshim Agan of N. A. (ADAMA)	66222-54	4.0	Pounds Active Ingredient Per Gallon	Group 7
Diuron	Diuron 4L	Drexel Chemical Company	19713-36	4.0	Pounds Active Ingredient Per Gallon	Group 7
Diuron	Diuron 4L	Loveland Products Inc.	34704-854	4.0	Pounds Active Ingredient Per Gallon	Group 7
Diuron	Diuron 4L	Makhteshim Agan of N. A. (ADAMA)	66222-54	4.0	Pounds Active Ingredient Per Gallon	Group 7
Diuron	Diuron 80	Drexel Chemical Company	19713-274	80	Percent Active Ingredient	Group 7
Diuron	Diuron 80 WDG	Loveland Products Inc.	34704-648	80	Percent Active Ingredient	Group 7
Diuron	Diuron 80DF	WinField-United (WinField Solutions, LLC)	9779-318	80	Percent Active Ingredient	Group 7
Diuron	Diuron 80WDG	UAP-Platte Chem. Co.	34704-648	80	Percent Active Ingredient	Group 7
Diuron	Karmex DF	DuPont Crop Protection	352-692	80	Percent Active Ingredient	Group 7
Diuron	Karmex DF	Makhteshim Agan of N. A. (ADAMA)	66222-51	80	Percent Active Ingredient	Group 7
Diuron	Karmex IWC	DuPont Crop Protection	352-692	80	Percent Active Ingredient	Group 7
Diuron	Karmex XP	DuPont Crop Protection	352-692	80	Percent Active Ingredient	Group 7
Diuron	Parrot 4L	Makhteshim Agan of N. A. (ADAMA)	66222-54	4.0	Pounds Active Ingredient Per Gallon	Group 7
Diuron	Parrot DF	Makhteshim Agan of N. A. (ADAMA)	66222-51	80	Percent Active Ingredient	Group 7
Fluridone	Alligare Fluridone	Alligare, LLC	81927-45	4.0	Pounds Active Ingredient Per Gallon	Group 12
Fluridone	Avast!	SePRO	67690-30	4.0	Pounds Active Ingredient Per Gallon	Group 12
Fluridone	Fluridone 4L	Albaugh, LLC (Albaugh, Inc/Agri Star)	42750-280	4.0	Pounds Active Ingredient Per Gallon	Group 12
Fluridone	Sonar AS	SePRO	67690-4	4.0	Pounds Active Ingredient Per Gallon	Group 12



Fluridone	Sonar Precision Release	SePRO	67690-12	5	Percent Active Ingredient	Group 12
Fluridone	Sonar Q	SePRO	67690-3	5	Percent Active Ingredient	Group 12
Fluridone	Sonar SRP	SePRO	67690-3	5	Percent Active Ingredient	Group 12
Fluroxypyr	Alligare Flagstaff	Alligare, LLC	81927-61	2.8	Pounds Acid Equivalent Per Gallon	Group 4
Fluroxypyr	Alligare Fluroxypyr	Alligare, LLC	66330-385-81927	2.8	Pounds Acid Equivalent Per Gallon	Group 4
Fluroxypyr	Comet Selective	Nufarm Americas Inc.	71368-87	1.5	Pounds Acid Equivalent Per Gallon	Group 4
Fluroxypyr	Vista XRT	Dow AgroSciences	62719-586	2.8	Pounds Acid Equivalent Per Gallon	Group 4
Fluroxypyr + 2,4-D + Dicamba	E-2 Herbicide	Nufarm Americas Inc.	228-442	0.4 + 3.2 + 0.4	Pounds Acid Equivalent Per Gallon, Respectively	Groups 4 + 4 + 4
Fluroxypyr + Clopyralid	Truslate Selective Herbicide	Nufarm Americas Inc.	71368-86	0.75 + 0.75	Pounds Acid Equivalent Per Gallon, Respectively	Group 4 + 4
Fluroxypyr + Picloram	Alligare Triumph XTR Herbicide	Alligare, LLC	81927-64	0.67 + 0.67	Pounds Acid Equivalent Per Gallon, Respectively	Groups 4 + 4
Fluroxypyr + Picloram	Surmount	Dow AgroSciences	62719-480	0.67 + 0.67	Pounds Acid Equivalent Per Gallon, Respectively	Groups 4 + 4
Fluroxypyr + Picloram	Trooper Pro	Nufarm Americas Inc.	228-599	1.0 + 1.0	Pounds Acid Equivalent Per Gallon, Respectively	Groups 4 + 4
Fluroxypyr + Triclopyr	Alligare Cleargraze Pasture Herbicide	Alligare, LLC	81927-65	1.0 + 3.0	Pounds Acid Equivalent Per Gallon, Respectively	Groups 4 + 4
Fluroxypyr + Triclopyr	PastureGard	Dow AgroSciences	62719-637	1.0 + 3.0	Pounds Acid Equivalent Per Gallon, Respectively	Groups 4 + 4
Glyphosate	Accord Concentrate	Dow AgroSciences	62719-324	4.0	Pounds Acid Equivalent Per Gallon	Group 9
Glyphosate	Accord SP	Dow AgroSciences	62719-322	3.0	Pounds Acid Equivalent Per Gallon	Group 9
Glyphosate	Accord XRT	Dow AgroSciences	62719-517	4.0	Pounds Acid Equivalent Per Gallon	Group 9
Glyphosate	Accord XRT II	Dow AgroSciences	62719-556	4.0	Pounds Acid Equivalent Per Gallon	Group 9
Glyphosate	Alligare Dryphosate 75SG	Alligare, LLC	81927-60	68.9	Percent Acid Equivalent	Group 9
Glyphosate	Alligare Glyphosate 4 PLUS	Alligare, LLC	81927-9	3.0	Pounds Acid Equivalent Per Gallon	Group 9
Glyphosate	Alligare Glyphosate 5.4	Alligare, LLC	81927-8	4.0	Pounds Acid Equivalent Per Gallon	Group 9
Glyphosate	Aqua Neat	Nufarm Americas Inc.	228-365	4.0	Pounds Acid Equivalent Per Gallon	Group 9
Glyphosate	Aqua Star	Albaugh, LLC (Albaugh, Inc/Agri Star)	42750-59	4.0	Pounds Acid Equivalent Per Gallon	Group 9
Glyphosate	Aquamaster	Monsanto	524-343	4.0	Pounds Acid Equivalent Per Gallon	Group 9
Glyphosate	AquaPro Aquatic Herbicide	SePRO Corporation	62719-324-67690	4.0	Pounds Acid Equivalent Per Gallon	Group 9
Glyphosate	Buccaneer	Tenkoz	55467-10	3.0	Pounds Acid Equivalent Per Gallon	Group 9
Glyphosate	Buccaneer Plus	Tenkoz	55467-9	3.0	Pounds Acid Equivalent Per Gallon	Group 9
Glyphosate	Credit Xtreme	Nufarm Americas Inc.	71368-81	4.5	Pounds Acid Equivalent Per Gallon	Group 9
Glyphosate	Foresters	Nufarm Americas Inc.	228-381	4.0	Pounds Acid Equivalent Per Gallon	Group 9
Glyphosate	Gly Star Gold	Albaugh, LLC (Albaugh, Inc/Agri Star)	42750-61	3.0	Pounds Acid Equivalent Per Gallon	Group 9
Glyphosate	Gly Star Original	Albaugh, LLC (Albaugh, Inc/Agri Star)	42750-60	3.0	Pounds Acid Equivalent Per Gallon	Group 9
Glyphosate	Gly Star Plus	Albaugh, LLC (Albaugh, Inc/Agri Star)	42750-61	3.0	Pounds Acid Equivalent Per Gallon	Group 9
Glyphosate	Gly Star Pro	Albaugh, LLC (Albaugh, Inc/Agri Star)	42750-61	3.0	Pounds Acid Equivalent Per Gallon	Group 9
Glyphosate	Gly-4	Universal Crop Prot. Alliance	42750-60-72693	3.0	Pounds Acid Equivalent Per Gallon	Group 9
Glyphosate	Gly-4 Plus	Universal Crop Prot. Alliance	72693-1	3.0	Pounds Acid Equivalent Per Gallon	Group 9
Glyphosate	Gly-4 Plus	Universal Crop Prot. Alliance	42750-61-72693	3.0	Pounds Acid Equivalent Per Gallon	Group 9
Glyphosate	GlyphoMate 41	PBI/Gordon Corporation	2217-847	2.8	Pounds Acid Equivalent Per Gallon	Group 9
Glyphosate	Glypro	Dow AgroSciences	62719-324	4.0	Pounds Acid Equivalent Per Gallon	Group 9
Glyphosate	Glypro Plus	Dow AgroSciences	62719-322	3.0	Pounds Acid Equivalent Per Gallon	Group 9
Glyphosate	Honcho	Monsanto	524-445	3.0	Pounds Acid Equivalent Per Gallon	Group 9
Glyphosate	Honcho Plus	Monsanto	524-454	3.0	Pounds Acid Equivalent Per Gallon	Group 9
Glyphosate	Imitator Aquatic	Drexel Chemical Company	19713-623	4.0	Pounds Acid Equivalent Per Gallon	Group 9
Glyphosate	Imitator DA	Drexel Chemical Company	19713-586	3.0	Pounds Acid Equivalent Per Gallon	Group 9
Glyphosate	Imitator Plus	Drexel Chemical Company	19713-526	3.0	Pounds Acid Equivalent Per Gallon	Group 9
Glyphosate	KleenUp Pro	Loveland Products, Inc.	34704-890	3.0	Pounds Acid Equivalent Per Gallon	Group 9
Glyphosate	Mad Dog Plus	Loveland Products, Inc.	34704-890	3.0	Pounds Acid Equivalent Per Gallon	Group 9
Glyphosate	Makaze	Loveland Products, Inc.	34704-890	3.0	Pounds Acid Equivalent Per Gallon	Group 9
Glyphosate	Mirage	Loveland Products Inc.	34704-889	3.0	Pounds Acid Equivalent Per Gallon	Group 9
Glyphosate	Mirage Herbicide	UAP-Platte Chem. Co.	524-445-34704	3.0	Pounds Acid Equivalent Per Gallon	Group 9
Glyphosate	Mirage Plus	Loveland Products Inc.	34704-890	3.0	Pounds Acid Equivalent Per Gallon	Group 9

Glyphosate	Rattler	Helena Agri-Enterprises, LLC (Helena Chemical Company)	524-445-5905	3.0	Pounds Acid Equivalent Per Gallon	Group 9
Glyphosate	Razor	Nufarm Americas Inc.	228-366	3.0	Pounds Acid Equivalent Per Gallon	Group 9
Glyphosate	Razor Pro	Nufarm Americas Inc.	228-366	3.0	Pounds Acid Equivalent Per Gallon	Group 9
Glyphosate	Rodeo	Dow AgroSciences	62719-324	4.0	Pounds Acid Equivalent Per Gallon	Group 9
Glyphosate	Roundup Custom	Monsanto	524-343	4.0	Pounds Acid Equivalent Per Gallon	Group 9
Glyphosate	Roundup Original	Monsanto	524-445	3.0	Pounds Acid Equivalent Per Gallon	Group 9
Glyphosate	Roundup Original II	Monsanto	524-454	3.0	Pounds Acid Equivalent Per Gallon	Group 9
Glyphosate	Roundup Original II CA	Monsanto	524-475	3.0	Pounds Acid Equivalent Per Gallon	Group 9
Glyphosate	Roundup PRO	Monsanto	524-475	3.0	Pounds Acid Equivalent Per Gallon	Group 9
Glyphosate	Roundup PRO Concentrate	Monsanto	524-529	3.7	Pounds Acid Equivalent Per Gallon	Group 9
Glyphosate	Roundup PRO Dry	Monsanto	524-505	64.9	Percent Acid Equivalent	Group 9
Glyphosate	Roundup PROMAX	Monsanto	524-579	4.5	Pounds Acid Equivalent Per Gallon	Group 9
Glyphosate	Showdown	Helena Agri-Enterprises, LLC (Helena Chemical Company)	71368-25-5905	3.0	Pounds Acid Equivalent Per Gallon	Group 9
Glyphosate + 2, 4-D	Campaign	Monsanto	524-351	0.9 + 1.5	Pounds Acid Equivalent Per Gallon, Respectively	Groups 9 + 4
Glyphosate + 2, 4-D	Imitator + 2,4-D	Drexel Chemical Company	19713-635	0.9 + 1.5	Pounds Acid Equivalent Per Gallon, Respectively	Groups 9 + 4
Glyphosate + 2, 4-D	Landmaster BW	Albaugh, LLC (Albaugh, Inc/Agri Star)	42570-62	0.9 + 1.5	Pounds Acid Equivalent Per Gallon, Respectively	Groups 9 + 4
Glyphosate + 2, 4-D	Landmaster BW	Monsanto	524-351	0.9 + 1.5	Pounds Acid Equivalent Per Gallon, Respectively	Groups 9 + 4
Hexazinone	Pronone 10G	Pro-Serve	33560-21	10	Percent Active Ingredient	Group 5
Hexazinone	Pronone 25G	Pro-Serve	33560-45	25	Percent Active Ingredient	Group 5
Hexazinone	Pronone MG	Pro-Serve	33560-21	10	Percent Active Ingredient	Group 5
Hexazinone	Pronone Power Pellet	Pro-Serve	33560-41	75	Percent Active Ingredient	Group 5
Hexazinone	Velosa	Helena Agri-Enterprises, LLC (Helena Chemical Company)	5905-579	2.4	Pounds Active Ingredient Per Gallon	Group 5
Hexazinone	Velpar DF	DuPont Crop Protection	352-581	75	Percent Active Ingredient	Group 5
Hexazinone	Velpar DF VU	Bayer Environmental Science	432-1576	75	Percent Active Ingredient	Group 5
Hexazinone	Velpar L	DuPont Crop Protection	352-392	2.0	Pounds Active Ingredient Per Gallon	Group 5
Hexazinone	Velpar L VU	Bayer Environmental Science	432-1573	75	Pounds Active Ingredient Per Gallon	Group 5
Hexazinone	Velpar ULW	DuPont Crop Protection	352-450	75	Percent Active Ingredient	Group 5
Hexazinone + Sulfometuron methyl	Oustar	Bayer Environmental Science	432-1553	63.2 + 11.8	Percent Active Ingredient, Respectively	Groups 5 + 2
Hexazinone + Sulfometuron methyl	Oustar	DuPont Crop Protection	352-603	63.2 + 11.8	Percent Active Ingredient, Respectively	Groups 5 + 2
Hexazinone + Sulfometuron methyl	Westar	Bayer Environmental Science	432-1558	68.6 + 6.5	Percent Active Ingredient, Respectively	Groups 5 + 2
Hexazinone + Sulfometuron methyl	Westar	DuPont Crop Protection	352-626	68.6 + 6.5	Percent Active Ingredient, Respectively	Groups 5 + 2
Imazapic	Alligare Panoramic 2SL	Alligare, LLC	66222-141-81927	2.0	Pounds Acid Equivalent Per Gallon	Group 2
Imazapic	Nufarm Imazapic 2SL	Nufarm Americas Inc.	71368-99	2.0	Pounds Acid Equivalent Per Gallon	Group 2
Imazapic	Open Range G	Wilbur-Ellis Co., LLC (Wilbur-Ellis Co.)	2935-557	0.8325	Percent Acid Equivalent	Group 2
Imazapic	Plateau	BASF Corporation	241-365	2.0	Pounds Acid Equivalent Per Gallon	Group 2
Imazapyr	Alligare Ecomazapyr 2SL	Alligare, LLC	81927-22	2.0	Pounds Acid Equivalent Per Gallon	Group 2
Imazapyr	Alligare Imazapyr 4SL	Alligare, LLC	81927-24	4.0	Pounds Acid Equivalent Per Gallon	Group 2
Imazapyr	Alligare Rotary 2 SL	Alligare, LLC	81927-6	2.0	Pounds Acid Equivalent Per Gallon	Group 2
Imazapyr	Arsenal	BASF Corporation	241-346	2.0	Pounds Acid Equivalent Per Gallon	Group 2
Imazapyr	Arsenal Applicators Conc.	BASF Corporation	241-299	4.0	Pounds Acid Equivalent Per Gallon	Group 2
Imazapyr	Arsenal PowerLine	BASF Corporation	241-431	2.0	Pounds Acid Equivalent Per Gallon	Group 2
Imazapyr	Chopper	BASF Corporation	241-296	2.0	Pounds Acid Equivalent Per Gallon	Group 2
Imazapyr	EZ-JECT Copperhead Herbicide Shells	EZ-JECT, Inc.	83220-2	0.000375	Ounces Acid Equivalent Per Shell	Group 2
Imazapyr	Habitat	BASF Corporation	241-426	2.0	Pounds Acid Equivalent Per Gallon	Group 2
Imazapyr	Habitat Herbicide	SePRO	241-426-67690	2.0	Pounds Acid Equivalent Per Gallon	Group 2
Imazapyr	Polaris	Nufarm Americas Inc.	228-534	2.0	Pounds Acid Equivalent Per Gallon	Group 2
Imazapyr	Polaris AC	Nufarm Americas Inc.	241-299-228	4.0	Pounds Acid Equivalent Per Gallon	Group 2
Imazapyr	Polaris AC	Nufarm Americas Inc.	228-480	4.0	Pounds Acid Equivalent Per Gallon	Group 2
Imazapyr	Polaris AC Complete	Nufarm Americas Inc.	228-570	4.0	Pounds Acid Equivalent Per Gallon	Group 2
Imazapyr	Polaris AQ	Nufarm Americas Inc.	241-426-228	2.0	Pounds Acid Equivalent Per Gallon	Group 2
Imazapyr	Polaris Herbicide	Nufarm Americas Inc.	241-346-228	2.0	Pounds Acid Equivalent Per Gallon	Group 2

Imazapyr	Polaris RR	Nufarm Americas Inc.	241-273-228	2.0	Pounds Acid Equivalent Per Gallon	Group 2
Imazapyr	Polaris SP	Nufarm Americas Inc.	228-536	2.0	Pounds Acid Equivalent Per Gallon	Group 2
Imazapyr	Polaris SP	Nufarm Americas Inc.	241-296-228	2.0	Pounds Acid Equivalent Per Gallon	Group 2
Imazapyr	SSI Maxim Arsenal 0.5G	SSI Maxim Co., Inc.	34913-23	0.5	Percent Acid Equivalent	Group 2
Imazapyr	SSI Maxim Arsenal 5.0 G	SSI Maxim Co., Inc.	34913-24	5	Percent Acid Equivalent	Group 2
Imazapyr	Stalker	BASF Corporation	241-398	2.0	Pounds Acid Equivalent Per Gallon	Group 2
Imazapyr + Diuron	Alligare Mojave 70 EG	Alligare, LLC	81927-25	7.78 + 62.22	Percent Acid Equivalent + Percent Active Ingredient, Respectively	Groups 2 + 7
Imazapyr + Diuron	Imazuron	Nufarm Americas Inc.	228-654	7.78 + 62.22	Percent Acid Equivalent + Percent Active Ingredient, Respectively	Groups 2 + 7
Imazapyr + Diuron	Sahara DG	BASF Corporation	241-372	7.78 + 62.22	Percent Acid Equivalent + Percent Active Ingredient, Respectively	Groups 2 + 7
Imazapyr + Diuron	SSI Maxim Topside 2.5G	SSI Maxim Co., Inc.	34913-22	0.5 + 2.0	Percent Acid Equivalent + Percent Active Ingredient, Respectively	Groups 2 + 7
Imazapyr + Metsulfuron methyl	Lineage Clearstand	Bayer Environmental Science	432-1578	63.2 + 9.5	Percent Acid Equivalent + Percent Active Ingredient, Respectively	Groups 2 + 2
Imazapyr + Metsulfuron methyl	Lineage Clearstand	DuPont Crop Protection	352-766	63.2 + 9.5	Percent Acid Equivalent + Percent Active Ingredient, Respectively	Groups 2 + 2
Imazapyr + Sulfometuron methyl + Metsulfuron methyl	Lineage HWC	Bayer Environmental Science	432-1577	37.5 + 28.1 + 7.5	Percent Acid Equivalent + Percent Acid Ingredient + Percent Active Ingredient, Respectively	Groups 2 + 2 + 2
Imazapyr + Sulfometuron methyl + Metsulfuron methyl	Lineage HWC	DuPont Crop Protection	352-765	37.5 + 28.1 + 7.5	Percent Acid Equivalent + Percent Acid Ingredient + Percent Active Ingredient, Respectively	Groups 2 + 2 + 2
Imazapyr + Sulfometuron methyl + Metsulfuron methyl	Lineage Prep	Bayer Environmental Science	432-1579	54.5 + 15.3 + 4.1	Percent Acid Equivalent + Percent Acid Ingredient + Percent Active Ingredient, Respectively	Groups 2 + 2 + 2
Imazapyr + Sulfometuron methyl + Metsulfuron methyl	Lineage Prep	DuPont Crop Protection	352-767	54.5 + 15.3 + 4.1	Percent Acid Equivalent + Percent Acid Ingredient + Percent Active Ingredient, Respectively	Groups 2 + 2 + 2
Metsulfuron methyl	Alligare MSM 60	Alligare, LLC	81927-7	60	Percent Active Ingredient	Group 2
Metsulfuron methyl	AmTide MSM 60DF Herbicide	AmTide, LLC	83851-3	60	Percent Active Ingredient	Group 2
Metsulfuron methyl	Cimarron MAX - Part A	Bayer Environmental Science	432-1555	60	Percent Active Ingredient	Group 2
Metsulfuron methyl	Cimarron MAX - Part A	DuPont Crop Protection	352-615	60	Percent Active Ingredient	Group 2
Metsulfuron methyl	Escort XP	Bayer Environmental Science	432-1549	60	Percent Active Ingredient	Group 2
Metsulfuron methyl	Escort XP	DuPont Crop Protection	352-439	60	Percent Active Ingredient	Group 2
Metsulfuron methyl	Patriot	Nufarm Americas Inc.	228-391	60	Percent Active Ingredient	Group 2
Metsulfuron methyl	PureStand	Nufarm Americas Inc.	71368-38	60	Percent Active Ingredient	Group 2
Metsulfuron methyl	Rometol	Rotam North America, Inc.	83100-2-83979	60	Percent Active Ingredient	Group 2
Metsulfuron methyl + Chlorsulfuron	Cimarron Plus	Bayer Environmental Science	432-1572	48 + 15	Percent Active Ingredient, Respectively	Groups 2 + 2
Metsulfuron methyl + Chlorsulfuron	Cimarron Plus	DuPont Crop Protection	352-670	48 + 15	Percent Active Ingredient, Respectively	Groups 2 + 2
Metsulfuron methyl + Chlorsulfuron	Cimarron X-tra	DuPont Crop Protection	352-669	30 + 37.5	Percent Active Ingredient, Respectively	Groups 2 + 2
Picloram	Alligare Picloram 22K	Alligare, LLC	81927-18	2.0	Pounds Acid Equivalent Per Gallon	Group 4
Picloram	Grazon PC	Dow AgroSciences	62719-181	2.0	Pounds Acid Equivalent Per Gallon	Group 4
Picloram	OutPost 22K	Dow AgroSciences	62719-6	2.0	Pounds Acid Equivalent Per Gallon	Group 4
Picloram	Tordon 22K	Dow AgroSciences	62719-6	2.0	Pounds Acid Equivalent Per Gallon	Group 4
Picloram	Tordon K	Dow AgroSciences	62719-17	2.0	Pounds Acid Equivalent Per Gallon	Group 4
Picloram	Triumph 22K	Albaugh, LLC (Albaugh, Inc/Agri Star)	42750-79	2.0	Pounds Acid Equivalent Per Gallon	Group 4
Picloram	Triumph K	Albaugh, LLC (Albaugh, Inc/Agri Star)	42750-81	2.0	Pounds Acid Equivalent Per Gallon	Group 4
Picloram	Trooper 22K	Nufarm Americas Inc.	228-535	2.0	Pounds Acid Equivalent Per Gallon	Group 4
Picloram + 2, 4-D	Alligare Picloram + D	Alligare, LLC	81927-16	0.54 + 2.0	Pounds Acid Equivalent Per Gallon, Respectively	Groups 4 + 4
Picloram + 2,4-D	Graslan L	Dow AgroSciences	62719-655	0.81 + 3.0	Pounds Acid Equivalent Per Gallon, Respectively	Groups 4 + 4
Picloram + 2, 4-D	Grazon P+D	Dow AgroSciences	62719-182	0.54 + 2.0	Pounds Acid Equivalent Per Gallon, Respectively	Groups 4 + 4
Picloram + 2, 4-D	GunSlinger	Albaugh, LLC (Albaugh, Inc/Agri Star)	42750-80	0.54 + 2.0	Pounds Acid Equivalent Per Gallon, Respectively	Groups 4 + 4
Picloram + 2, 4-D	HiredHand P+D	Dow AgroSciences	62719-182	0.54 + 2.0	Pounds Acid Equivalent Per Gallon, Respectively	Groups 4 + 4
Picloram + 2, 4-D	Pathway	Dow AgroSciences	62719-31	0.26 + 1.0	Pounds Acid Equivalent Per Gallon, Respectively	Groups 4 + 4
Picloram + 2, 4-D	Tordon 101 Mixture	Dow AgroSciences	62719-5	0.54 + 2.0	Pounds Acid Equivalent Per Gallon, Respectively	Groups 4 + 4
Picloram + 2, 4-D	Tordon RTU	Dow AgroSciences	62719-31	0.26 + 1.0	Pounds Acid Equivalent Per Gallon, Respectively	Groups 4 + 4
Picloram + 2, 4-D	Trooper P + D	Nufarm Americas Inc.	228-530	0.54 + 2.0	Pounds Acid Equivalent Per Gallon, Respectively	Groups 4 + 4
Picloram + 2, 4-D + Dicamba	Trooper Extra	Nufarm Americas Inc.	228-586	0.5 + 2.0 + 0.5	Pounds Acid Equivalent Per Gallon, Respectively	Groups 4 + 4 + 4
Rimsulfuron	Alligare Laramie 25DF	Alligare, LLC	81927-57	25	Percent Active Ingredient	Group 2

Rimsulfuron	Hinge	Rotam North America, Inc.	83100-40-83979	25	Percent Active Ingredient	Group 2
Rimsulfuron	Matrix SG	Dupont Crop Protection	352-768	25	Percent Active Ingredient	Group 2
Sulfometuron methyl	Alligare SFM 75	Alligare, LLC	81927-26	75	Percent Active Ingredient	Group 2
Sulfometuron methyl	Oust DF	DuPont Crop Protection	352-401	75	Percent Active Ingredient	Group 2
Sulfometuron methyl	Oust XP	Bayer Environmenatl Science	432-1552	75	Percent Active Ingredient	Group 2
Sulfometuron methyl	Oust XP	DuPont Crop Protection	352-601	75	Percent Active Ingredient	Group 2
Sulfometuron methyl	Spyder	Nufarm Americas Inc.	228-408	75	Percent Active Ingredient	Group 2
Sulfometuron methyl + Chlorsulfuron	Landmark XP	Bayer Environmental Science	432-1560	50 + 25	Percent Active Ingredient, Respectively	Groups 2 + 2
Sulfometuron methyl + Chlorsulfuron	Landmark XP	DuPont Crop Protection	352-645	50 + 25	Percent Active Ingredient, Respectively	Groups 2 + 2
Sulfometuron methyl + Metsulfuron methyl	Alligare SFM Extra	Alligare, LLC	81927-5	56.25 + 15	Percent Active Ingredient, Respectively	Groups 2 + 2
Sulfometuron methyl + Metsulfuron methyl	Oust Extra	Bayer Environmental Science	432-1557	56.25 + 15	Percent Active Ingredient, Respectively	Groups 2 + 2
Sulfometuron methyl + Metsulfuron methyl	Oust Extra	DuPont Crop Protection	352-622	56.25 + 15	Percent Active Ingredient, Respectively	Groups 2 + 2
Sulfometuron methyl + Metsulfuron methyl	Spyder Extra Selective	Nufarm Americas Inc.	228-690	56.25 + 15	Percent Active Ingredient, Respectively	Groups 2 + 2
Tebuthiuron	Alligare Tebuthiuron 20 P	Alligare, LLC	81927-41	20	Percent Active Ingredient	Group 7
Tebuthiuron	Alligare Tebuthiuron 80 WG	Alligare, LLC	81927-37	80	Percent Active Ingredient	Group 7
Tebuthiuron	Spike 20P	Dow AgroSciences	62719-121	20	Percent Active Ingredient	Group 7
Tebuthiuron	Spike 80DF	Dow AgroSciences	62719-107	80	Percent Active Ingredient	Group 7
Tebuthiuron	SpraKil S-5 Granules	SSI Maxim Co., Inc.	34913-10	5	Percent Active Ingredient	Group 7
Tebuthiuron + Diuron	SpraKil SK-13 Granular	SSI Maxim Co., Inc.	34913-15	1 + 3	Percent Active Ingredient, Respectively	Groups 7 + 7
Tebuthiuron + Diuron	SpraKil SK-26 Granular	SSI Maxim Co., Inc.	34913-16	2 + 6	Percent Active Ingredient, Respectively	Groups 7 + 7
Triclopyr	Alligare Boulder 6.3	Alligare, LLC	81927-54	6.3	Pounds Acid Equivalent Per Gallon	Group 4
Triclopyr	Alligare Triclopyr 4	Alligare, LLC	81927-11	4.0	Pounds Acid Equivalent Per Gallon	Group 4
Triclopyr	Alligare Triclopyr 3	Alligare, LLC	81927-13	3.0	Pounds Acid Equivalent Per Gallon	Group 4
Triclopyr	Element 3A	Dow AgroSciences	62719-37	3.0	Pounds Acid Equivalent Per Gallon	Group 4
Triclopyr	Element 4	Dow AgroSciences	62719-40	4.0	Pounds Acid Equivalent Per Gallon	Group 4
Triclopyr	Forestry Garlon XRT	Dow AgroSciences	62719-553	6.3	Pounds Acid Equivalent Per Gallon	Group 4
Triclopyr	Garlon 3A	Dow AgroSciences	62719-37	3.0	Pounds Acid Equivalent Per Gallon	Group 4
Triclopyr	Garlon 4	Dow AgroSciences	62719-40	4.0	Pounds Acid Equivalent Per Gallon	Group 4
Triclopyr	Garlon 4 Ultra	Dow AgroSciences	62719-527	4.0	Pounds Acid Equivalent Per Gallon	Group 4
Triclopyr	Pathfinder II	Dow AgroSciences	62719-176	0.75	Pounds Acid Equivalent Per Gallon	Group 4
Triclopyr	Relegate	Nufarm Americas Inc.	228-521	4.0	Pounds Acid Equivalent Per Gallon	Group 4
Triclopyr	Relegate RTU	Nufarm Americas Inc.	228-552	0.75	Pounds Acid Equivalent Per Gallon	Group 4
Triclopyr	Remedy	Dow AgroSciences	62719-70	4.0	Pounds Acid Equivalent Per Gallon	Group 4
Triclopyr	Remedy Ultra	Dow AgroSciences	62719-552	4.0	Pounds Acid Equivalent Per Gallon	Group 4
Triclopyr	Renovate 3	SePRO Corporation	62719-37-67690	3.0	Pounds Acid Equivalent Per Gallon	Group 4
Triclopyr	Renovate OTF	SePRO Corporation	67690-42	10	Percent Acid Equivalent	Group 4
Triclopyr	Tahoe 3A	Nufarm Americas Inc.	228-520	3.0	Pounds Acid Equivalent Per Gallon	Group 4
Triclopyr	Tahoe 4E	Nufarm Americas Inc.	228-385	4.0	Pounds Acid Equivalent Per Gallon	Group 4
Triclopyr	Tahoe 4E Herbicide	Nufarm Americas Inc.	228-517	4.0	Pounds Acid Equivalent Per Gallon	Group 4
Triclopyr	Triclopyr RTU	Albaugh, LLC (Albaugh, Inc/Agri Star)	42750-173	0.75	Pounds Acid Equivalent Per Gallon	Group 4
Triclopyr	Trycera	Helena Agri-Enterprises, LLC (Helena Chemical Company)	5906-580	2.87	Pounds Acid Equivalent Per Gallon	Group 4
Triclopyr	Vastlan	Dow AgroSciences	62719-687	4.0	Pounds Acid Equivalent Per Gallon	Group 4
Triclopyr + 2, 4-D	Alligare Everett	Alligare, LLC	81927-29	1.0 + 2.0	Pounds Acid Equivalent Per Gallon, Respectively	Groups 4 + 4
Triclopyr + 2, 4-D	Aquasweep	Nufarm Americas Inc.	228-316	1.07 + 2.78	Pounds Acid Equivalent Per Gallon, Respectively	Groups 4 + 4
Triclopyr + 2, 4-D	Candor	Nufarm Americas Inc.	228-565	1.0 + 2.0	Pounds Acid Equivalent Per Gallon, Respectively	Groups 4 + 4
Triclopyr + 2, 4-D	Crossbow	Dow AgroSciences	62719-260	1.0 + 2.0	Pounds Acid Equivalent Per Gallon, Respectively	Groups 4 + 4
Triclopyr + Clopyralid	Alligare Prescott Herbicide	Alligare, LLC	81927-30	2.25 + 0.75	Pounds Acid Equivalent Per Gallon, Respectively	Groups 4 + 4
Triclopyr + Clopyralid	Brazen	Nufarm Americas Inc.	228-564	2.25 + 0.75	Pounds Acid Equivalent Per Gallon, Respectively	Groups 4 + 4





## *Adjuvants Approved for Use on BLM Administered Lands*

Update: April 4, 2019

Adjuvant Class	Adjuvant Type	Trade Name	Manufacturer	Comments
Surfactant				
	Non-ionic Surfactant			
	90-10 Surfactant		Brewer International	
	A-90		Alligare, LLC	
	Alligare 90		Alligare, LLC	
	Activate Plus		WinField United (Winfield Solutions, LLC)	CA Reg. No. 9779-50004-AA WA Reg. No. 1381-09001
	Activator 90		Loveland Products, Inc.	CA Reg. No. 34704-50034-AA
	Ad Spray 90		Helena Agri-Enterprises, LLC (Helena Chemical Company)	WA Reg. No. 5905-70020
	Alligare Surface		Alligare, LLC	
	Alligare Surface West		Alligare, LLC	CA Reg. No. 81927-50007-AA WA Reg. No. 81927-15004
	Alligare Trace		Alligare, LLC	
	Aquifact		Aqumix, Inc.	
	Audible 80		Exacto, Inc.	
	Audible 90		Exacto, Inc.	
	Brewer 90-10		Brewer International	
	Chempro S-820		Chemorse Ltd.	WA Reg. No. 46059-15001
	Chempro S-910		Chemorse Ltd.	WA Reg. No. 46059-14001
	Chemsurf 80		Chemorse Ltd.	CA Reg. No. 1050984-50004-AA WA Reg. No. 46059-10002
	Chemsurf 90		Chemorse Ltd.	CA Reg. No. 1050984-50005-AA WA Reg. No. 46059-10003
	Combelt Premier 90		Van Diest Supply Co.	
	Combelt Trophy Gold		Van Diest Supply Co.	
	Denali-EA		Wilbur-Ellis Co. LLC (Wilbur-Ellis Co.)	CA Reg. No. 2935-50204-AA WA Reg. No. 2935-15006
	Elite Platinum		Red River Specialties, Inc.	
	Elite Premium		Red River Specialties, Inc.	
	EP-90		Eco-Pak, LLC	
	Haf-Pynt		Drexel Chemical Company	CA Reg. No. 19713-50007-AA WA Reg. No. 19713-14001
	Hum-AC 820		Drexel Chemical Company	WA Reg. No. 19713-09001
	Induce		Helena Agri-Enterprises, LLC (Helena Chemical Company)	CA Reg. No. 5905-50091-AA
	Induce pH		Helena Agri-Enterprises, LLC (Helena Chemical Company)	
	Inlet		Helena Agri-Enterprises, LLC (Helena Chemical Company)	CA Reg. No. 5905-50099-AA
	LI-700		Loveland Products, Inc.	CA Reg. No. 34704-50035
	Magnify		Monterey AgResources	CA Reg. No. 17545-50018
	NIS 90:10		Precision Laboratories, LLC	CA Reg. No. 9349-50002-AA WA Reg. No. 9349-13001
	NIS-EA		Wilbur-Ellis Co. LLC (Wilbur-Ellis Co.)	
	No Foam A		Creative Marketing & Research, Inc.	CA Reg. No. 1050775-50015
	Optima		Helena Agri-Enterprises, LLC (Helena Chemical Company)	CA Reg. No. 5905-50075-AA
	PAS-800		Drexel Chemical Company	
	Preference		WinField United (Winfield Solutions, LLC)	WA Reg. No. 1381-50011
	R-900		Wilbur-Ellis Co. LLC (Wilbur-Ellis Co.)	
	Rainer-EA		Wilbur-Ellis Co. LLC (Wilbur-Ellis Co.)	

Adjuvant Class	Adjuvant Type	Trade Name	Manufacturer	Comments
Surfactant	Non-ionic Surfactant - cont.			
		Range Master	ORO Agri Inc.	WA Reg. No. 72662-19001
		Red River 90	Red River Specialties, Inc.	
		Red River NIS	Red River Specialties, Inc.	
		Scanner	Loveland Products, Inc.	CA Reg. No. 34704-50064
				WA Reg. No. 34704-09003
		Spec 90/10	Helena Agri-Enterprises, LLC (Helena Chemical Company)	
		Spray Activator 85	Van Diest Supply Co.	
		Spreader 90	Loveland Products, Inc.	WA Reg. No. 34704-05002-AA
		Spret	Helena Agri-Enterprises, LLC (Helena Chemical Company)	CA Reg. No. 5905-50098-AA
		Super Spread 90	Wilbur-Ellis Co. LLC (Wilbur-Ellis Co.)	WA Reg. No. AW-2935-70016
		Super Spread 7000	Wilbur-Ellis Co. LLC (Wilbur-Ellis Co.)	CA Reg. No. 2935-50170
				WA Reg. No. AW-2935-0002
		Surf-Ac 820	Drexel Chemical Company	WA Reg. No. 19713-70002
		Surf-Ac 910	Drexel Chemical Company	WA Reg. No. 19713-70003
		UAP Surfactant 80/20	Loveland Products, Inc.	
		Wetcit	ORO Agri Inc.	CA Reg. No. 72662-50001-AA
				WA Reg. No. 72662-05001
		X-77	Loveland Products, Inc.	CA Reg. No. 34704-50044
	Spreader/Sticker			
		Agri-Trend Spreader	Agri-Trend	
		Antero-EA	Wilbur-Ellis Co. LLC (Wilbur-Ellis Co.)	CA Reg. No. 2935-50206
				WA Reg. No. 2935-18001
		Aqua-King Plus	WinField United (Winfield Solutions, LLC)	
		Attach	Loveland Products, Inc.	CA Reg. No. 34704-50026
		Bond	Loveland Products, Inc.	CA Reg. No. 36208-50005
		Bond Max	Loveland Products, Inc.	CA Reg. No. 34704-50060
				WA Reg. No. 34704-08003
		Chempro S-196	Chemorse Ltd.	CA Reg. No. 1050984-50006-AA
				WA Reg. No. 46059-11001
		Cohere	Helena Agri-Enterprises, LLC (Helena Chemical Company)	CA Reg. No. 5905-50083-A
		CWC 90	CWC Chemical, Inc.	
		Gulfstream	WinField United (Winfield Solutions, LLC)	
		Insist 90	Wilbur-Ellis Co. LLC (Wilbur-Ellis Co.)	
		Insist 90 Plus	Wilbur-Ellis Co. LLC (Wilbur-Ellis Co.)	WA Reg. No. 2935-17001
		Lastick	Helena Agri-Enterprises, LLC (Helena Chemical Company)	
		Nu Film 17	Miller Chem. & Fert. Corp.	CA Reg. No. 72-50021-AA
		Nu-Film-IR	Miller Chem. & Fert. Corp.	
		Nu Film P	Miller Chem. & Fert. Corp.	CA Reg. No. 72-50022-AA
		Onside Kick	Exacto, Inc.	
		Pinene II	Drexel Chemical Company	CA Reg. No. 19713-50003-AA
				WA Reg. No. 19713-00001
		Protyx	Precision Laboratories, LLC	WA Reg. No. 9349-13002
		R-56	Wilbur-Ellis Co. LLC (Wilbur-Ellis Co.)	CA Reg. No. 2935-50144
		Rocket DL	Monterey AgResources	CA Reg. No. 17545-50019
		Tactic	Loveland Products, Inc.	CA Reg. No. 34704-50041-AA
		TopFilm	Biosorb, Inc.	
		Widespread Max	Loveland Products, Inc.	CA Reg. No. 34704-50061
				WA Reg. No. 34704-09001



Adjuvant Class	Adjuvant Type	Trade Name	Manufacturer	Comments
	Silicone-based			
		Aero Dyne-Amic	Helena Agri-Enterprises, LLC (Helena Chemical Company)	CA Reg. No. 5905-50080-AA
		Aircover	WinField United (Winfield Solutions, LLC)	
		Alligare OSS/NIS	Alligare, LLC	
		Chempro S-172	Chemorse Ltd.	CA Reg. No. 1050984-50008-AA
				WA Reg. No. 46059-15002
		Dyne-Amic	Helena Agri-Enterprises, LLC (Helena Chemical Company)	CA Reg. No. 5095-50071-AA
		Elite Marvel	Red River Specialties, Inc.	
		Freeway	Loveland Products, Inc.	CA Reg. No. 34704-50031
				WA Reg. No. 34704-04005
		Kinetic	Helena Agri-Enterprises, LLC (Helena Chemical Company)	CA Reg. No. 5905-50087-AA
		Phase	Loveland Products, Inc.	CA Reg. No. 34704-50037-AA
		Phase II	Loveland Products, Inc.	
		Scrimmage	Exacto, Inc.	
		SilEnergy	Brewer International	
		Sil-Fact	Drexel Chemical Company	CA Reg. No. 19713-50004-AA
		Sil-MES 100	Drexel Chemical Company	
		Silnet 200	Brewer International	
		Silwet L-77	Loveland Products, Inc.	CA Reg. No. 34704-50043
		Speed	Precision Laboratories, LLC	
		Sun Spreader	Red River Specialties, Inc.	
		Syl-coat	Wilbur-Ellis Co. LLC (Wilbur-Ellis Co.)	CA Reg. No. 2935-50189
				WA Reg. No. 2935-12002
		Sylgard 309	Wilbur-Ellis Co. LLC (Wilbur-Ellis Co.)	CA Reg. No. 2935-50161
		Syl-Tac	Wilbur-Ellis Co. LLC (Wilbur-Ellis Co.)	CA Reg. No. 2935-50167
		Syl-Tac-EA	Wilbur-Ellis Co. LLC (Wilbur-Ellis Co.)	CA Reg. No. 2935-50203
				WA Reg. No. 2935-15004
		Thoroughbred	WinField United (Winfield Solutions, LLC)	
Oil-based				
	Crop Oil Concentrate			
		60/40 Crop Oil Concentrate	Chemorse Ltd.	WA Reg. No. 46059-15004
		Agri-Dex	Helena Agri-Enterprises, LLC (Helena Chemical Company)	CA Reg. No. 5905-50094-AA
		Alligare Forestry Oil	Alligare, LLC	
		Brewer 83-17	Brewer International	
		Combelt Crop Oil Concentrate	Van Diest Supply Co.	
		Combelt Premium Crop Oil Concentrate	Van Diest Supply Co.	
		Crop Oil Concentrate	Helena Agri-Enterprises, LLC (Helena Chemical Company)	CA Reg. No. 5905-50085-AA
		Crop Oil Concentrate	Loveland Products, Inc.	
		CWR Herbicide Activator	Creative Marketing & Research, Inc.	CA Reg. No. 1050775-50020-AA
		Exchange	Precision Laboratories, LLC	WA Reg. No. 9349-13008
		Herbimax	Loveland Products, Inc.	CA Reg. No. 34704-50032-AA
				WA Reg. No. 34704-04006
		Maximizer Crop Oil Conc.	Loveland Products, Inc.	CA Reg. No. 34704-50059
				WA Reg. No. 34704-08002
		Monterey Crop Oil	Monterey AgResources	CA Reg. No. 17545-50031
		Mor-Act	Wilbur-Ellis Co. LLC (Wilbur-Ellis Co.)	CA Reg. No. 2935-50098
		Peptoil	Drexel Chemical Company	WA Reg. No. 19713-70001
		Power-Line Crop Oil	Land View Inc.	
		Primary	Drexel Chemical Company	
		Prime Oil	WinField United (Winfield Solutions, LLC)	CA Reg. No. 979-50002-AA
				WA Reg. No. 1381-13004
		R.O.C. Rigo Oil Conc.	Wilbur-Ellis Co. LLC (Wilbur-Ellis Co.)	

Adjuvant Class	Adjuvant Type	Trade Name	Manufacturer	Comments
Oil-based	Crop Oil Concentrate - cont.			
		Red River Forestry Oil	Red River Specialties, Inc.	
		Red River Pacer Crop Oil	Red River Specialties, Inc.	
		Superb HC	WinField United (Winfield Solutions, LLC)	WA Reg. No. 1381-06003
	Methylated Seed Oil			
		60/40 MSO	Chemorse Ltd.	WA Reg. No. 46059-15003
		Alligare MSO	Alligare, LLC	
		Alligare MSO West	Alligare, LLC	WA Reg. No. 81927-15002
		Atmos	WinField United (Winfield Solutions, LLC)	
		Conquer	Chemorse Ltd.	CA Reg. No. 1050984-50002-AA
				WA Reg. No. 46059-10001
		Combelt Base	Van Diest Supply Co.	
		Combelt Methylates Soy-Stik	Van Diest Supply Co.	
		Destiny HC	WinField United (Winfield Solutions, LLC)	WA Reg. No. 1381-09002
		Elite Supreme	Red River Specialties, Inc.	
		Glacier-EA	Wilbur-Ellis Co. LLC (Wilbur-Ellis Co.)	CA Reg. No. 2935-50205
				WA Re. No. 2935-16001
		Hasten	Wilbur-Ellis Co. LLC (Wilbur-Ellis Co.)	CA Reg. No. 2935-50160
				WA Reg. No. 2935-02004
		Hasten-EA	Wilbur-Ellis Co. LLC (Wilbur-Ellis Co.)	CA Reg. No. 2935-50202
				WA Reg. No. 2935-15003
		Hot MES	Drexel Chemical Company	
		Inergy	WinField United (Winfield Solutions, LLC)	
		Kixyt	Precision Laboratories, LLC	WA Reg. No. 9349-12001
		MES-100	Drexel Chemical Company	CA Reg. No. 19713-50002-AA
				WA Reg. No. 19713-50002
		Methylated Spray Oil Conc.	Helena Agri-Enterprises, LLC (Helena Chemical Company)	
		Monterey M.S.O.	Monterey AgResources	CA Reg. No. 17545-50025
		MSO Concentrate (Alligare)	Alligare, LLC	
		MSO Concentrate (Loveland)	Loveland Products, Inc.	CA Reg. No. 34704-50067
				WA Reg. No. 34709-04009
		Persist Ultra	Precision Laboratories, LLC	CA Reg. No. 9349-50005
				WA Reg. No. 9349-13003
		Premium MSO	Helena Agri-Enterprises, LLC (Helena Chemical Company)	
		Red River Supreme	Red River Specialties, Inc.	
		Renegade 2.0	Wilbur-Ellis Co. LLC (Wilbur-Ellis Co.)	CA Reg. No. 2935-50194
				WA Reg. No. 2935-13001
		Renegade-EA	Wilbur-Ellis Co. LLC (Wilbur-Ellis Co.)	CA Reg. No. 2935-50201
				WA Reg. No. 2935-15002
		Sunburn	Red River Specialties, Inc.	
		SunEnergy	Brewer International	
		Sunset	Red River Specialties, Inc.	
		Sun Wet	Brewer International	
		Super Kix	Wilbur-Ellis Co. LLC (Wilbur-Ellis Co.)	
		Super Spread MSO	Wilbur-Ellis Co. LLC (Wilbur-Ellis Co.)	
	Methylated Seed Oil + Organosilicone			
		Alligare MVO Plus	Alligare, LLC	
		Turbulence	WinField United (Winfield Solutions, LLC)	

Adjuvant Class	Adjuvant Type	Trade Name	Manufacturer	Comments
Oil-based	Vegetable Oil			
		Amigo	Loveland Products, Inc.	CA Reg. No. 34704-50028-AA
				WA Reg. No. 34704-04002
		BeanOil	Drexel Chemical Company	
		Competitor	Wilbur-Ellis Co. LLC (Wilbur-Ellis Co.)	CA Reg. No. 2935-50173
				WA Reg. No. AW-2935-04001
		Elite Natural	Red River Specialties, Inc.	
		Motion	Exacto, Inc.	
		Noble	WinField United (Winfield Solutions, LLC)	
		Vegetoil	Drexel Chemical Company	
Fertilizer-based				
	Nitrogen-based			
		Actamaster Soluble Spray Adjuvant	Loveland Products, Inc.	WA Reg. No. 34704-50001
		Actamaster Spray Adjuvant	Loveland Products, Inc.	WA Reg. No. 34704-50006
		Alliance	WinField United (Winfield Solutions, LLC)	CA Reg. No. 1381-50002-AA
				WA Reg. No.1381-05005
		AMS-All	Drexel Chemical Company	
		AMS-Supreme	Drexel Chemical Company	
		AMS-Xtra	Drexel Chemical Company	
		Bronc	Wilbur-Ellis Co. LLC (Wilbur-Ellis Co.)	
		Bronc Max	Wilbur-Ellis Co. LLC (Wilbur-Ellis Co.)	
		Bronc Max EDT	Wilbur-Ellis Co. LLC (Wilbur-Ellis Co.)	
		Bronc Plus Dry	Wilbur-Ellis Co. LLC (Wilbur-Ellis Co.)	
		Bronc Plus Dry EDT	Wilbur-Ellis Co. LLC (Wilbur-Ellis Co.)	WA Reg. No.2935-03002
		Bronc Total	Wilbur-Ellis Co. LLC (Wilbur-Ellis Co.)	
		Cayuse Plus	Wilbur-Ellis Co. LLC (Wilbur-Ellis Co.)	CA Reg. No. 2935-50171
		Class Act NG	WinField United (Winfield Solutions, LLC)	WA Reg. No. 1381-01004
		Combelt Gardian	Van Diest Supply Co.	
		Combelt Gardian Plus	Van Diest Supply Co.	
		Corral AMS Liquid	WinField United (Winfield Solutions, LLC)	WA Reg. No. 1381-01006
		Dispatch	Loveland Products, Inc.	
		Dispatch 111	Loveland Products, Inc.	
		Dispatch 2N	Loveland Products, Inc.	
		Dispatch AMS	Loveland Products, Inc.	
		Flame	Loveland Products, Inc.	
		Holzit	Drexel Chemical Company	
		Nitro-Surf	Drexel Chemical Company	
		Quest	Helena Agri-Enterprises, LLC (Helena Chemical Company)	CA Reg. No. 5905-50076-AA
		TransActive HC	Helena Agri-Enterprises, LLC (Helena Chemical Company)	
Special Function				
	Buffering Agent			
		Brimstone	Wilbur-Ellis Co. LLC (Wilbur-Ellis Co.)	
		BS-500	Drexel Chemical Company	
		Buffers P.S.	Helena Agri-Enterprises, LLC (Helena Chemical Company)	CA Reg. No. 5905-50062-ZA
		Oblique	Red River Specialties, Inc.	
		Spray-Aide	Miller Chem. & Fert. Corp.	CA Reg. No. 72-50006-AA
		Tri-Fol	Wilbur-Ellis Co. LLC (Wilbur-Ellis Co.)	CA Reg. No. 2935-50152
		Yardage	Exacto, Inc.	

Adjuvant Class	Adjuvant Type	Trade Name	Manufacturer	Comments
<b>Special Function</b>				
	Colorants/Dyes			
		Alligare Super Marking Dye	Alligare, LLC	
		BullsEye	Milliken Chemical	
		Elite Ruby	Red River Specialties, Inc.	
		Elite Sapphire	Red River Specialties, Inc.	
		Elite Sapphire WSB	Red River Specialties, Inc.	
		Elite Splendor	Red River Specialties, Inc.	
		Hash Mark Blue Liquid	Exacto, Inc.	
		Hash Mark Blue Liquid HC	Exacto, Inc.	
		Hash Mark Blue Powder	Exacto, Inc.	
		Hash Mark Green Liquid	Exacto, Inc.	
		Hash Mark Green Powder	Exacto, Inc.	
		Hi-Light	Becker-Underwood	
		Hi-Light WSP	Becker-Underwood	
		Marker Dye	Loveland Products, Inc.	
		Mark-It Blue	Monterey AgResources	
		Mark-It Red	Monterey AgResources	
		Mystic HC	WinField United (Winfield Solutions, LLC)	
		Signal	Precision Laboratories, LLC	
		SPI-Max Blue Spray Marker	PROKoZ	
		Spray Indicator XL	Helena Agri-Enterprises, LLC (Helena Chemical Company)	
		TurfTrax	Loveland Products, Inc.	
		TurfTrax Blue Spray Indicator	Loveland Products, Inc.	
<b>Compatibility/Suspension Agent</b>				
		Convert	Precision Laboratories, LLC	WA Reg. No. 9349-13007
		E Z MIX	Loveland Products, Inc.	CA Reg. No. 36208-50006
		Mix	Drexel Chemical Company	
		Support	Loveland Products, Inc.	WA Reg. No. 34704-04011
<b>Defoaming Agent</b>				
		Alligare Anti-Foamer	Alligare, LLC	
		Alligare Defoamer	Alligare, LLC	
		Combelt Defoamer	Van Diest Supply Co.	
		Defoamer	Brewer International	
		Fighter-F 10	Loveland Products, Inc.	
		Fighter-F Dry	Loveland Products, Inc.	
		Foam Buster	Helena Agri-Enterprises, LLC (Helena Chemical Company)	CA Reg. No. 5905-50072-AA
		Foambuster Max	Helena Agri-Enterprises, LLC (Helena Chemical Company)	
		Foam Fighter	Miller Chem. & Fert. Corp.	CA Reg. No. 72-50005-AA
		Fome-Kil	Drexel Chemical Company	
		FTF Defoamer	Wilbur-Ellis Co. LLC (Wilbur-Ellis Co.)	WA Reg. No. 2935-13002
		Gundown Max	Precision Laboratories, LLC	WA Reg. No. 9349-13013
		No Foam	Wilbur-Ellis Co. LLC (Wilbur-Ellis Co.)	CA Reg. No. 2935-50136
		Red River Defoamer	Red River Specialties, Inc.	
		Reverse	Exacto, Inc.	
		Suppression	Chemorse Ltd.	CA Reg. No. 1050984-50007
				WA Reg. No. 46059-12001
		Tripleline	Creative Marketing & Research, Inc.	CA Reg. No. 1050775-50023-AA
		Unfoamer	Loveland Products, Inc.	CA Reg. No. 34704-50062

Adjuvant Class	Adjuvant Type	Trade Name	Manufacturer	Comments
Special Function				
	Deposition Aid			
		Agripharm Drift Control	Walco International	
		Alligare Downforce	Alligare, LLC	
		Alligare Pattern	Alligare, LLC	CA Reg. No. 81927-50008-AA
		Bivert	Wilbur-Ellis Co. LLC (Wilbur-Ellis Co.)	CA Reg. No. 2935-50163
		Border AQ	Precision Laboratories, LLC	WA Reg. No. 9349-13009
		Chem-Trol	Chemorse Ltd.	CA Reg. No. 1050984-50001-AA
				WA Reg. No. 1050984-50001
		Clasp	Helena Agri-Enterprises, LLC (Helena Chemical Company)	WA Reg. No. 5905-13002
		Compadre	Loveland Products, Inc.	CA Reg. No. 34704-50050
				WA Reg. No. 34704-06004
		Coverage G-20	Wilbur-Ellis Co. LLC (Wilbur-Ellis Co.)	
		Crosshair	Wilbur-Ellis Co. LLC (Wilbur-Ellis Co.)	
		CWC Sharpshooter	CWC Chemical, Inc.	
		Cygnat Plus	Brewer International	CA Reg. No. 1051114-50001
		Diligence	Wilbur-Ellis Co. LLC (Wilbur-Ellis Co.)	
		Direct	Precision Laboratories, LLC	
		Droplex	WinField United (Winfield Solutions, LLC)	
		EDT Concentrate	Wilbur-Ellis Co. LLC (Wilbur-Ellis Co.)	
		Elite Secure Ultra	Red River Specialties, Inc.	
		Exit	Miller Chem. & Fert. Corp.	CA Reg. No. 72-50014-AA
		Grounded	Helena Agri-Enterprises, LLC (Helena Chemical Company)	
		Grounded - CA	Helena Agri-Enterprises, LLC (Helena Chemical Company)	CA Reg. No. 5905-50096-AA
		Grounded - W	Helena Agri-Enterprises, LLC (Helena Chemical Company)	WA Reg. No. 5905-13001
		Infuse	Loveland Products, Inc.	
		Intac Plus	Loveland Products, Inc.	
		Interlock	WinField United (Winfield Solutions, LLC)	
		Liberate	Loveland Products, Inc.	CA Reg. No. 34704-50030-AA
				WA Reg. No. 34704-04008
		LOX	Drexel Chemical Company	
		LOX PLUS	Drexel Chemical Company	
		Mist-Control	Miller Chem. & Fert. Corp.	CA Reg. No. 72-50011-AA
		Offside	Exacto, Inc.	
		Pointblank	Helena Agri-Enterprises, LLC (Helena Chemical Company)	CA Reg. No. 52467-50008-AA-5905
		Poly Control 2	Brewer International	
		Reign	Loveland Products, Inc.	CA Reg. No. 34704-50045
				WA Reg. No. 34704-05010
		Reign LC	Loveland Products, Inc.	CA Reg. No. 34704-50048
		Secure Ultra	Red River Specialties, Inc.	
		Strike Zone DF	Helena Agri-Enterprises, LLC (Helena Chemical Company)	CA Reg. No. 5905-50084-AA
		Sustain	Miller Chem. & Fert. Corp.	CA Reg. No. 72-50015-AA
		Syndetic	Chemorse Ltd.	CA Reg. No. 1050984-50003-ZA
		Volare DC	Precision Laboratories, LLC	CA Reg. No. 9349-50004-AA
				WA Reg. No. 9349-13006
		Weather Gard	Loveland Products, Inc.	CA Reg. No. 34704-50042-AA
	Diluent/Deposition Agent			
		Bark Oil	Crop Production Services	
		Bark Oil EC	Crop Production Services	
		Elite Premier	Red River Specialties, Inc.	
		Elite Premier Blue	Red River Specialties, Inc.	
		Hy-Grade EC	CWC Chemical, Inc.	

Adjuvant Class	Adjuvant Type	Trade Name	Manufacturer	Comments
<b>Special Function</b>				
	Diluent/Deposition Agent - cont.			
		Hy-Grade I	CWC Chemical, Inc.	
		Improved JLB Oil Plus	Brewer International	
		In-Place	Wilbur-Ellis Co. LLC (Wilbur-Ellis Co.)	CA Reg. No. 2935-50169
		JLB Oil Plus	Brewer International	
		Red River Basal Oil	Red River Specialties, Inc.	
		Thinvert Concentrate	Waldrum Specialties, Inc.	
		Thinvert RTU	Waldrum Specialties, Inc.	
		W.E.B. Oil	Wilbur-Ellis Co. LLC (Wilbur-Ellis Co.)	CA Reg. No. 2935-50166
				WA Reg. No. AW 2935-70023
	<b>Foam Marker</b>			
		Align	Helena Agri-Enterprises, LLC (Helena Chemical Company)	
		F.M.-160	Drexel Chemical Company	
		R-160	Wilbur-Ellis Co. LLC (Wilbur-Ellis Co.)	
		Red River Foam Marker	Red River Specialties, Inc.	
		Trekker Trax	Loveland Products, Inc.	
		Tuff Trax Foam Concentrate	Loveland Products, Inc.	
	<b>Invert Emulsion Agent</b>			
		Redi-vert II	Wilbur-Ellis Co. LLC (Wilbur-Ellis Co.)	CA Reg. No. 2935-50168
	<b>Tank Cleaner</b>			
		All Clear	Loveland Products, Inc.	
		Back Field	Exacto, Inc.	
		Combelt Tank-Aid	Van Diest Supply Co.	
		Elite Vigor	Red River Specialties, Inc.	
		Kutter	Wilbur-Ellis Co. LLC (Wilbur-Ellis Co.)	
		Neutral-Clean	Wilbur-Ellis Co. LLC (Wilbur-Ellis Co.)	
		Pro Tank	WinField United (Winfield Solutions, LLC)	
		Red River Tank Cleaner	Red River Specialties, Inc.	
		SSC-11	Wilbur-Ellis Co. LLC (Wilbur-Ellis Co.)	
		Tank and Equipment Cleaner	Loveland Products, Inc.	
		Wipe Out	Helena Agri-Enterprises, LLC (Helena Chemical Company)	
	<b>Water Conditioning</b>			
		AccuQuest WM	Helena Agri-Enterprises, LLC (Helena Chemical Company)	
		Alligare Water Conditioner	Alligare, LLC	
		Blendmaster	Loveland Products, Inc.	
		Breeze	WinField United (Winfield Solutions, LLC)	WA Reg. No. 1381-13007
		Choice	Loveland Products, Inc.	CA Reg. No. 34704-50027-AA
				WA Reg. No. 34704-04004
		Choice Weather Master	Loveland Products, Inc.	CA Reg. No. 34704-50038-AA
				WA Reg. No. 34704-05005
		Choice Xtra	Loveland Products, Inc.	
		Climb	Wilbur-Ellis Co.	CA Reg. No. 2935-50181
				WA Reg. No. 2935-09001
		Completion	Exacto, Inc.	
		Combelt N-Tense	Van Diest Supply Co.	
		Cut-Rate	Wilbur-Ellis Co. LLC (Wilbur-Ellis Co.)	
		Cynder	Wilbur-Ellis Co. LLC (Wilbur-Ellis Co.)	CA Reg. No. 2935-50211

Adjuvant Class	Adjuvant Type	Trade Name	Manufacturer	Comments
Special Function				
	Water Conditioning - cont.			
		Elite Imperial	Red River Specialties, Inc.	
		Hel-Fire	Helena Agri-Enterprises, LLC (Helena Chemical Company)	
		Import	Precision Laboratories, LLC	WA Reg. No. 9349-14001
		Sequestra	Drexel Chemical Company	
		Smoke	Helena Agri-Enterprises, LLC (Helena Chemical Company)	CA Reg. No. 5905-50104-AA
		Transport LpH	Precision Laboratories, LLC	
		Transport Plus	Precision Laboratories, LLC	WA Reg. No. 9349-13014

**Adjuvant Information Summary**

**MASTER LIST**

**April 4, 2019**

Adjuvant Class	Adjuvant Type	Trade Name	Manufacturer Name	Formulation	Registration Number #1	Registration Number #2
Surfactant	Non-Ionic	90-10 Surfactant	Brewer International	Liquid		
Surfactant	Non-Ionic	A-90	Alligare, LLC	Liquid		
Surfactant	Non-Ionic	Alligare 90	Alligare, LLC	Liquid		
Surfactant	Non-Ionic	Activate Plus	WinField United (Winfield Solutions, LLC)	Liquid	CA Reg. No. 9779-50004-AA	WA Reg. No. 1381-09001
Surfactant	Non-Ionic	Activator 90	Loveland Products, Inc.	Liquid	CA Reg. No. 34704-50034-AA	
Surfactant	Non-Ionic	Ad Spray 90	Helena Agri-Enterprises, LLC (Helena Chemical Company)	Liquid		WA Reg. No. 5905-70020
Surfactant	Non-Ionic	Alligare Surface	Alligare, LLC	Liquid		
Surfactant	Non-Ionic	Alligare Surface West	Alligare, LLC	Liquid	CA Reg. No. 81927-50007-AA	WA Reg. No. 81927-15004
Surfactant	Non-Ionic	Alligare Trace	Alligare, LLC	Liquid		
Surfactant	Non-Ionic	Aqufact	Aqumix, Inc.	Liquid		
Surfactant	Non-Ionic	Audible 80	Exacto, Inc.	Liquid		
Surfactant	Non-Ionic	Audible 90	Exacto, Inc.	Liquid		
Surfactant	Non-Ionic	Brewer 90-10	Brewer International	Liquid		
Surfactant	Non-Ionic	Chempro S-820	Chemorse Ltd.	Liquid		WA Reg. No. 46059-15001
Surfactant	Non-Ionic	Chempro S-910	Chemorse Ltd.	Liquid		WA Reg. No. 46059-14001
Surfactant	Non-Ionic	Chemsurf 80	Chemorse Ltd.	Liquid	CA Reg. No. 1050984-50004-AA	WA Reg. No. 46059-10002
Surfactant	Non-Ionic	Chemsurf 90	Chemorse Ltd.	Liquid	CA Reg. No. 1050984-50005-AA	WA Reg. No. 46059-10003
Surfactant	Non-Ionic	Cornbelt Premier 90	Van Diest Supply Co.	Liquid		
Surfactant	Non-Ionic	Cornbelt Trophy Gold	Van Diest Supply Co.	Liquid		
Surfactant	Non-Ionic	Denali-EA	Wilbur-Ellis Co. LLC (Wilbur-Ellis Co.)	Liquid	CA Reg. No. 2935-50204-AA	WA Reg. No. 2935-15006
Surfactant	Non-Ionic	Elite Platinum	Red River Specialities, Inc.	Liquid		
Surfactant	Non-Ionic	Elite Premium	Red River Specialities, Inc.	Liquid		
Surfactant	Non-Ionic	EP-90	Eco-Pak, LLC	Liquid		
Surfactant	Non-Ionic	Haf-Pynt	Drexel Chemical Company	Liquid	CA Reg. No. 19713-50007-AA	WA Reg. No. 19713-14001
Surfactant	Non-Ionic	Hum-AC 820	Drexel Chemical Company	Liquid		WA Reg. No. 19713-09001
Surfactant	Non-Ionic	Induce	Helena Agri-Enterprises, LLC (Helena Chemical Company)	Liquid	CA Reg. No. 5905-50091-AA	
Surfactant	Non-Ionic	Induce pH	Helena Agri-Enterprises, LLC (Helena Chemical Company)	Liquid		
Surfactant	Non-Ionic	Inlet	Helena Agri-Enterprises, LLC (Helena Chemical Company)	Liquid	CA Reg. No. 5905-50099-AA	
Surfactant	Non-Ionic	LI-700	Loveland Products, Inc.	Liquid	CA Reg. No. 34704-50035	WA Reg. No. AW36208-70004
Surfactant	Non-Ionic	Magnify	Monterey AgResources	Liquid	CA Reg. No. 17545-50018	
Surfactant	Non-Ionic	NIS 90:10	Precision Laboratories, LLC	Liquid	CA Reg. No. 9349-50002-AA	WA Reg. No. 9349-13001
Surfactant	Non-Ionic	NIS-EA	Wilbur-Ellis Co. LLC (Wilbur-Ellis Co.)	Liquid		
Surfactant	Non-Ionic	No Foam A	Creative Marketing & Research	Liquid	CA Reg. No. 1050775-50015	
Surfactant	Non-Ionic	Optima	Helena Agri-Enterprises, LLC (Helena Chemical Company)	Liquid	CA Reg. No. 5905-50075-AA	
Surfactant	Non-Ionic	PAS-800	Drexel Chemical Company	Liquid		
Surfactant	Non-Ionic	Preference	WinField United (Winfield Solutions, LLC)	Liquid		WA Reg. No. 1381-50011
Surfactant	Non-Ionic	R-900	Wilbur-Ellis Co. LLC (Wilbur-Ellis Co.)	Liquid		
Surfactant	Non-Ionic	Rainer-EA	Wilbur-Ellis Co. LLC (Wilbur-Ellis Co.)	Liquid		
Surfactant	Non-Ionic	Range Master	ORO Agri, Inc.	Liquid		WA Reg. No. 72662-19001
Surfactant	Non-Ionic	Red River 90	Red River Specialities, Inc.	Liquid		
Surfactant	Non-Ionic	Red River NIS	Red River Specialities, Inc.	Liquid		



Surfactant	Non-Ionic	Scanner	Loveland Products, Inc.	Liquid	CA Reg. No. 34704-50064	WA Reg. No. 34704-09003
Surfactant	Non-Ionic	Spec 90/10	Helena Agri-Enterprises, LLC (Helena Chemical Company)	Liquid		
Surfactant	Non-Ionic	Spray Activator 85	Van Diest Supply Co.	Liquid		
Surfactant	Non-Ionic	Spreader 90	Loveland Products, Inc.	Liquid	CA Reg. No. 34704-50055	WA Reg. No. 34704-05002
Surfactant	Non-Ionic	Spret	Helena Agri-Enterprises, LLC (Helena Chemical Company)	Liquid	CA Reg. No. 5905-50098-AA	
Surfactant	Non-Ionic	Super Spread 7000	Wilbur-Ellis Co. LLC (Wilbur-Ellis Co.)	Liquid	CA Reg. No. 2935-50170	WA Reg. No. AW-2935-0002
Surfactant	Non-Ionic	Super Spread 90	Wilbur-Ellis Co. LLC (Wilbur-Ellis Co.)	Liquid		WA Reg. No. AW-2935-70016
Surfactant	Non-Ionic	Surf-Ac 820	Drexel Chemical Company	Liquid		WA Reg. No. 19713-70002
Surfactant	Non-Ionic	Surf-Ac 910	Drexel Chemical Company	Liquid		WA Reg. No. 19713-70003
Surfactant	Non-Ionic	UAP Surfactant 80/20	Loveland Products, Inc.	Liquid		
Surfactant	Non-Ionic	Wetcit	ORO Agri, Inc.	Liquid	CA Reg. No. 72662-50001-AA	WA Reg. No. 72662-05001
Surfactant	Non-Ionic	X-77	Loveland Products, Inc.	Liquid	CA Reg. No. 34704-50044	
Surfactant	Spreader/Sticker	Agri-Trend Spreader	Agri-Trend	Liquid		
Surfactant	Spreader/Sticker	Antero-EA	Wilbur-Ellis Co. LLC (Wilbur-Ellis Co.)	Liquid	CA Reg. No. 2935-50206	WA Reg. No. 2935-18001
Surfactant	Spreader/Sticker	Aqua-King Plus	WinField United (Winfield Solutions, LLC)	Liquid		
Surfactant	Spreader/Sticker	Attach	Loveland Products, Inc.	Liquid	CA Reg. No. 34704-50026	
Surfactant	Spreader/Sticker	Bond	Loveland Products, Inc.	Liquid	CA Reg. No. 36208-50005	
Surfactant	Spreader/Sticker	Bond Max	Loveland Products, Inc.	Liquid	CA Reg. No. 34704-50060	WA Reg. No. 34704-08003
Surfactant	Spreader/Sticker	Chempro S-196	Chemorse Ltd.	Liquid	CA Reg. No. 1050984-50006-AA	WA Reg. No. 46059-11001
Surfactant	Spreader/Sticker	Cohere	Helena Agri-Enterprises, LLC (Helena Chemical Company)	Liquid	CA Reg. No. 5905-50083-A	
Surfactant	Spreader/Sticker	CWC 90	CWC Chemical, Inc.	Liquid		
Surfactant	Spreader/Sticker	Gulfstream	WinField United (Winfield Solutions, LLC)	Liquid		
Surfactant	Spreader/Sticker	Insist 90	Wilbur-Ellis Co. LLC (Wilbur-Ellis Co.)	Liquid		
Surfactant	Spreader/Sticker	Insist 90 Plus	Wilbur-Ellis Co. LLC (Wilbur-Ellis Co.)	Liquid		WA Reg. No. 2935-17001
Surfactant	Spreader/Sticker	Lastick	Helena Agri-Enterprises, LLC (Helena Chemical Company)	Liquid		
Surfactant	Spreader/Sticker	Nu Film 17	Miller Chem. & Fert. Corp.	Liquid	CA Reg. No. 72-50021-AA	
Surfactant	Spreader/Sticker	Nu Film P	Miller Chem. & Fert. Corp.	Liquid	Ca Reg. No. 72-50022-AA	
Surfactant	Spreader/Sticker	Nu-Film-IR	Miller Chem. & Fert. Corp.	Liquid		
Surfactant	Spreader/Sticker	Onside Kick	Exacto, Inc.	Liquid		
Surfactant	Spreader/Sticker	Pinene II	Drexel Chemical Company	Liquid	CA Reg. No. 19713-50003-AA	WA Reg. No. 19713-00001
Surfactant	Spreader/Sticker	Protyx	Precision Laboratories, LLC	Liquid		WA Reg. No. 9349-13002
Surfactant	Spreader/Sticker	R-56	Wilbur-Ellis Co. LLC (Wilbur-Ellis Co.)	Liquid	CA Reg. No. 2935-50144	
Surfactant	Spreader/Sticker	Rocket DL	Monterey AgResources	Liquid	CA Reg. No. 17545-50019	
Surfactant	Spreader/Sticker	Surf-King Plus	WinField United (Winfield Solutions, LLC)	Liquid		
Surfactant	Spreader/Sticker	Tactic	Loveland Products, Inc.	Liquid	CA Reg. No. 34704-50041-AA	
Surfactant	Spreader/Sticker	TopFilm	Biosorb, Inc.	Liquid		
Surfactant	Spreader/Sticker	Widespread Max	Loveland Products, Inc.	Liquid	CA Reg. No. 34704-50061	WA Reg. No. 34704-09001
Surfactant	Silicone Based	Aero Dyne-Amic	Helena Agri-Enterprises, LLC (Helena Chemical Company)	Liquid	CA Reg. No. 5905-50080-AA	
Surfactant	Silicone Based	Aircover	WinField United (Winfield Solutions, LLC)+D66	Liquid		
Surfactant	Silicone Based	Alligare OSS/NIS	Alligare, LLC	Liquid		
Surfactant	Silicone Based	Chempro S-172	Chemorse, Ltd	Liquid	CA Reg. No. 1050984-50008-AA	WA Reg. No. 46059-15002
Surfactant	Silicone Based	Dyne-Amic	Helena Agri-Enterprises, LLC (Helena Chemical Company)	Liquid	CA Reg. No. 5095-50071-AA	
Surfactant	Silicone Based	Elite Marvel	Red River Specialities, Inc.	Liquid		
Surfactant	Silicone Based	Freeway	Loveland Products, Inc.	Liquid	CA Reg. No. 34704-50031	WA Reg. No. 34704-04005
Surfactant	Silicone Based	Kinetic	Helena Agri-Enterprises, LLC (Helena Chemical Company)	Liquid	CA Reg. No. 5905-50087-AA	

Surfactant	Silicone Based	Phase	Loveland Products, Inc.	Liquid	CA Reg. No. 34704-50037-AA	
Surfactant	Silicone Based	Phase II	Loveland Products, Inc.	Liquid		
Surfactant	Silicone Based	Scrimmage	Exacto, Inc.	Liquid		
Surfactant	Silicone Based	SilEnergy	Brewer International	Liquid		
Surfactant	Silicone Based	Sil-Fact	Drexel Chemical Company	Liquid	CA Reg. No. 19713-50004-AA	
Surfactant	Silicone Based	Sil-MES 100	Drexel Chemical Company	Liquid		
Surfactant	Silicone Based	Silnet 200	Brewer International	Liquid		
Surfactant	Silicone Based	Silwet L-77	Loveland Products, Inc.	Liquid	CA Reg. No. 34704-50043	
Surfactant	Silicone Based	Speed	Precision Laboratories, LLC	Liquid		
Surfactant	Silicone Based	Sun Spreader	Red River Specialities, Inc.	Liquid		
Surfactant	Silicone Based	Syl-coat	Wilbur-Ellis Co. LLC (Wilbur-Ellis Co.)	Liquid	CA Reg. No. 2935-50189	WA Reg. No. 2935-12002
Surfactant	Silicone Based	Sylgard 309	Wilbur-Ellis Co. LLC (Wilbur-Ellis Co.)	Liquid	CA Reg. No. 2935-50161	
Surfactant	Silicone Based	Syl-Tac	Wilbur-Ellis Co. LLC (Wilbur-Ellis Co.)	Liquid	CA Reg. No. 2935-50167	
Surfactant	Silicone Based	Syl-Tac-EA	Wilbur-Ellis Co. LLC (Wilbur-Ellis Co.)	Liquid	CA Reg. No. 2935-50203	WA Reg. No. 2935-15004
Surfactant	Silicone Based	Thoroughbred	WinField United (Winfield Solutions, LLC)	Liquid		
Oil Based	Crop Oil Concentrate	60/40 Crop Oil Concentrate	Chemorse Ltd.	Liquid		WA Reg. No. 46059-15004
Oil Based	Crop Oil Concentrate	Agri-Dex	Helena Agri-Enterprises, LLC (Helena Chemical Company)	Liquid	CA Reg. No. 5905-50094-AA	
Oil Based	Crop Oil Concentrate	Alligare Forestry Oil	Alligare, LLC	Liquid		
Oil Based	Crop Oil Concentrate	Brewer 83-17	Brewer International	Liquid		
Oil Based	Crop Oil Concentrate	Cornbelt Crop Oil Concentrate	Van Diest Supply Co.	Liquid		
Oil Based	Crop Oil Concentrate	Cornbelt Premium Crop Oil Concentrate	Van Diest Supply Co.	Liquid		
Oil Based	Crop Oil Concentrate	Crop Oil Concentrate (Loveland)	Loveland Products, Inc.	Liquid		
Oil Based	Crop Oil Concentrate	Crop Oil Concentrate (Helena)	Helena Agri-Enterprises, LLC (Helena Chemical Company)	Liquid	CA Reg. No. 5905-50085-AA	
Oil Based	Crop Oil Concentrate	CWR Herbicide Activator	Helena Agri-Enterprises, LLC (Helena Chemical Company)	Liquid	CA Reg. No. 1050775-50020-AA	
Oil Based	Crop Oil Concentrate	Exchange	Precision Laboratories, LLC	Liquid		WA Reg. No. 9349-13008
Oil Based	Crop Oil Concentrate	Herbimax	Loveland Products, Inc.	Liquid	CA Reg. No. 34704-50032-AA	WA Reg. No. 34704-04006
Oil Based	Crop Oil Concentrate	Maximizer Crop Oil Conc.	Loveland Products, Inc.	Liquid	CA Reg. No. 34704-50059	WA Reg. No. 34704-08002
Oil Based	Crop Oil Concentrate	Monterey Crop Oil	Monterey AgResources	Liquid	CA Reg. No. 17545-50031	
Oil Based	Crop Oil Concentrate	Mor-Act	Wilbur-Ellis Co. LLC (Wilbur-Ellis Co.)	Liquid	CA Reg. No. 2935-50098	
Oil Based	Crop Oil Concentrate	Peptoil	Drexel Chemical Company	Liquid		WA Reg. No. 19713-70001
Oil Based	Crop Oil Concentrate	Power-Line Crop Oil	Land View Inc.	Liquid		
Oil Based	Crop Oil Concentrate	Prime Oil	WinField United (Winfield Solutions, LLC)	Liquid	CA Reg. No. 979-50002-AA	WA Reg. No. 1381-13004
Oil Based	Crop Oil Concentrate	Primary	Drexel Chemical Company	Liquid		
Oil Based	Crop Oil Concentrate	R.O.C. Rigo Oil Conc.	Wilbur-Ellis Co. LLC (Wilbur-Ellis Co.)	Liquid		
Oil Based	Crop Oil Concentrate	Red River Forestry Oil	Red River Specialities, Inc.	Liquid		
Oil Based	Crop Oil Concentrate	Red River Pacer Crop Oil	Red River Specialities, Inc.	Liquid		
Oil Based	Crop Oil Concentrate	Superb HC	WinField United (Winfield Solutions, LLC)	Liquid		WA Reg. No. 1381-06003
Oil Based	Methylated Seed Oil	60/40 MSO	Chemorse Ltd.	Liquid		WA Reg. No. 46059-15003
Oil Based	Methylated Seed Oil	Alligare MSO	Alligare, LLC	Liquid		
Oil Based	Methylated Seed Oil	Alligare MSO West	Alligare, LLC	Liquid		WA Reg. No. 81927-15002
Oil Based	Methylated Seed Oil	Atmos	WinField United (Winfield Solutions, LLC)	Liquid		
Oil Based	Methylated Seed Oil	Conquer	Chemorse Ltd.	Liquid	CA Reg. No. 1050984-50002-AA	WA Reg. No. 46059-10001
Oil Based	Methylated Seed Oil	Cornbelt Base	Van Diest Supply Co.	Liquid		
Oil Based	Methylated Seed Oil	Cornbelt Methylates Soy-Stik	Van Diest Supply Co.	Liquid		
Oil Based	Methylated Seed Oil	Destiny HC	WinField United (Winfield Solutions, LLC)	Liquid		WA Reg. No. 1381-09002

Oil Based	Methylated Seed Oil	Elite Supreme	Red River Specialities, Inc.	Liquid		
Oil Based	Methylated Seed Oil	Glacier-EA	Wilbur-Ellis Co. LLC (Wilbur-Ellis Co.)	Liquid	CA Reg. No. 2935-50205	WA Reg. No. 2935-16001
Oil Based	Methylated Seed Oil	Hasten	Wilbur-Ellis Co. LLC (Wilbur-Ellis Co.)	Liquid	CA Reg. No. 2935-50160	WA Reg. No. 2935-02004
Oil Based	Methylated Seed Oil	Hasten-EA	Wilbur-Ellis Co. LLC (Wilbur-Ellis Co.)	Liquid	CA Reg. No. 2935-50202	WA Reg. No. 2935-15003
Oil Based	Methylated Seed Oil	Hot MES	Drexel Chemical Company	Liquid		WA Reg. No. 19713-15001
Oil Based	Methylated Seed Oil	Inergy	WinField United (Winfield Solutions, LLC)	Liquid		
Oil Based	Methylated Seed Oil	Kixyt	Precision Laboratories, LLC	Liquid		WA Reg. No. 9349-12001
Oil Based	Methylated Seed Oil	MES-100	Drexel Chemical Company	Liquid	CA Reg. No. 19713-50002-AA	WA Reg. No. 19713-50002
Oil Based	Methylated Seed Oil	Methylated Spray Oil Conc.	Helena Agri-Enterprises, LLC (Helena Chemical Company)	Liquid		
Oil Based	Methylated Seed Oil	Monterey M.S.O.	Monterey AgResources	Liquid	CA Reg. No. 17545-50025	
Oil Based	Methylated Seed Oil	MSO	Alligare, LLC	Liquid		
Oil Based	Methylated Seed Oil	MSO Concentrate (Alligare)	Alligare, LLC	Liquid		
Oil Based	Methylated Seed Oil	MSO Concentrate (Loveland)	Loveland Products, Inc.	Liquid	CA Reg. No. 34704-50067	WA Reg. No. 34709-04009
Oil Based	Methylated Seed Oil	Persist Ultra	Precision Laboratories, LLC	Liquid	CA Reg. No. 9349-50005	WA Reg. No. 9349-13003
Oil Based	Methylated Seed Oil	Premium MSO	Helena Agri-Enterprises, LLC (Helena Chemical Company)	Liquid		
Oil Based	Methylated Seed Oil	Red River Supreme	Red River Specialities, Inc.	Liquid		
Oil Based	Methylated Seed Oil	Renegade 2.0	Wilbur-Ellis Co. LLC (Wilbur-Ellis Co.)	Liquid	CA Reg. No. 2935-50194	WA Reg. No. 2935-13001
Oil Based	Methylated Seed Oil	Renegade-EA	Wilbur-Ellis Co. LLC (Wilbur-Ellis Co.)	Liquid	CA Reg. No. 2935-50201	WA Reg. No. 2935-15002
Oil Based	Methylated Seed Oil	Sun Wet	Brewer International	Liquid		
Oil Based	Methylated Seed Oil	Sunburn	Red River Specialities, Inc.	Liquid		
Oil Based	Methylated Seed Oil	SunEnergy	Brewer International	Liquid		
Oil Based	Methylated Seed Oil	Sunset	Red River Specialities, Inc.	Liquid		
Oil Based	Methylated Seed Oil	Super Kix	Wilbur-Ellis Co. LLC (Wilbur-Ellis Co.)	Liquid		
Oil Based	Methylated Seed Oil	Super Spread MSO	Wilbur-Ellis Co. LLC (Wilbur-Ellis Co.)	Liquid		
Oil Based	Methylated Seed Oil + Organosilicate	Alligare MVO Plus	Alligare, LLC	Liquid		
Oil Based	Methylated Seed Oil + Organosilicate	Turbulence	Wilbur-Ellis Co. LLC (Wilbur-Ellis Co.)	Liquid		WA Reg. No. 1381-13008
Oil Based	Vegetable Oil	Amigo	Loveland Products, Inc.	Liquid	CA Reg. No. 34704-50028-AA	WA Reg. No. 34704-04002
Oil Based	Vegetable Oil	BeanOil	Drexel Chemical Company	Liquid		
Oil Based	Vegetable Oil	Competitor	Wilbur-Ellis Co. LLC (Wilbur-Ellis Co.)	Liquid	CA Reg. No. 2935-50173	WA Reg. No. AW-2935-04001
Oil Based	Vegetable Oil	Elite Natural	Red River Specialities, Inc.	Liquid		
Oil Based	Vegetable Oil	Motion	Exacto, Inc.	Liquid		
Oil Based	Vegetable Oil	Noble	WinField United (Winfield Solutions, LLC)	Liquid		
Oil Based	Vegetable Oil	Vegetoil	Drexel Chemical Company	Liquid		
Fertilizer Based	Nitrogen Based	Actamaster Soluble Spray Adjuvant	Loveland Products, Inc.	Liquid		WA Reg. No. 34704-50001
Fertilizer Based	Nitrogen Based	Actamaster Spray Adjuvant	Loveland Products, Inc.	Liquid		WA Reg. No. 34704-50006
Fertilizer Based	Nitrogen Based	Alliance	WinField United (Winfield Solutions, LLC)	Liquid	CA Reg. No. 1381-50002-AA	WA Reg. No.1381-05005
Fertilizer Based	Nitrogen Based	AMS-All	Drexel Chemical Company	Liquid		
Fertilizer Based	Nitrogen Based	AMS-Supreme	Drexel Chemical Company	Liquid		
Fertilizer Based	Nitrogen Based	AMS-Xtra	Drexel Chemical Company	Liquid		
Fertilizer Based	Nitrogen Based	Bronc	Wilbur-Ellis Co. LLC (Wilbur-Ellis Co.)	Liquid		
Fertilizer Based	Nitrogen Based	Bronc Max	Wilbur-Ellis Co. LLC (Wilbur-Ellis Co.)	Liquid		
Fertilizer Based	Nitrogen Based	Bronc Max EDT	Wilbur-Ellis Co. LLC (Wilbur-Ellis Co.)	Liquid		
Fertilizer Based	Nitrogen Based	Bronc Plus Dry	Wilbur-Ellis Co. LLC (Wilbur-Ellis Co.)	Dry		
Fertilizer Based	Nitrogen Based	Bronc Plus Dry EDT	Wilbur-Ellis Co. LLC (Wilbur-Ellis Co.)	Dry		WA Reg. No.2935-03002

Fertilizer Based	Nitrogen Based	Bronc Total	Wilbur-Ellis Co. LLC (Wilbur-Ellis Co.)	Liquid		
Fertilizer Based	Nitrogen Based	Cayuse Plus	Wilbur-Ellis Co. LLC (Wilbur-Ellis Co.)	Liquid	CA Reg. No. 2935-50171	
Fertilizer Based	Nitrogen Based	Class Act NG	WinField United (Winfield Solutions, LLC)	Liquid		WA Reg. No. 1381-01004
Fertilizer Based	Nitrogen Based	Cornbelt Gardian	Van Diest Supply Co.	Liquid		
Fertilizer Based	Nitrogen Based	Cornbelt Gardian Plus	Van Diest Supply Co.	Liquid		
Fertilizer Based	Nitrogen Based	Corral AMS Liquid	WinField United (Winfield Solutions, LLC)	Liquid		WA Reg. No. 1381-01006
Fertilizer Based	Nitrogen Based	Dispatch	Loveland Products, Inc.	Liquid		
Fertilizer Based	Nitrogen Based	Dispatch 111	Loveland Products, Inc.	Liquid		
Fertilizer Based	Nitrogen Based	Dispatch 2N	Loveland Products, Inc.	Liquid		
Fertilizer Based	Nitrogen Based	Dispatch AMS	Loveland Products, Inc.	Liquid		
Fertilizer Based	Nitrogen Based	Flame	Loveland Products, Inc.	Liquid		
Fertilizer Based	Nitrogen Based	Holzit	Drexel Chemical Company	Liquid		
Fertilizer Based	Nitrogen Based	Nitro-Surf	Drexel Chemical Company	Liquid		
Fertilizer Based	Nitrogen Based	Quest	Helena Agri-Enterprises, LLC (Helena Chemical Company)	Liquid	CA Reg. No. 5905-50076-AA	
Fertilizer Based	Nitrogen Based	Transactive HC	Helena Agri-Enterprises, LLC (Helena Chemical Company)	Liquid		
Special Function	Buffering Agent	Brimstone	Wilbur-Ellis Co. LLC (Wilbur-Ellis Co.)	Liquid		
Special Function	Buffering Agent	BS-500	Drexel Chemical Company	Liquid		
Special Function	Buffering Agent	Buffers P.S.	Helena Agri-Enterprises, LLC (Helena Chemical Company)	Liquid	CA Reg. No. 5905-50062-ZA	
Special Function	Buffering Agent	Oblique	Red River Specialities, Inc.	Liquid		
Special Function	Buffering Agent	Spray-Aide	Miller Chem. & Fert. Corp.	Liquid	CA Reg. No. 72-50006-AA	
Special Function	Buffering Agent	Tri-Fol	Wilbur-Ellis Co. LLC (Wilbur-Ellis Co.)	Liquid	CA Reg. No. 2935-50152	
Special Function	Buffering Agent	Yardage	Exacto, Inc.	Liquid		
Special Function	Colorants/Dyes	Alligare Super Marking Dye	Alligare, LLC	Liquid		
Special Function	Colorants/Dyes	Bullseye	Milliken Chemical	Liquid		
Special Function	Colorants/Dyes	Elite Ruby	Red River Specialities, Inc.	Dry		
Special Function	Colorants/Dyes	Elite Sapphire	Red River Specialities, Inc.	Dry		
Special Function	Colorants/Dyes	Elite Sapphire WSB	Red River Specialities, Inc.	Dry		
Special Function	Colorants/Dyes	Elite Splendor	Red River Specialities, Inc.	Liquid		
Special Function	Colorants/Dyes	Hash Mark Green Powder	Exacto, Inc.	Dry		
Special Function	Colorants/Dyes	Hask Mark Blue Liquid	Exacto, Inc.	Liquid		
Special Function	Colorants/Dyes	Hask Mark Blue Liquid HC	Exacto, Inc.	Liquid		
Special Function	Colorants/Dyes	Hask Mark Blue Powder	Exacto, Inc.	Dry		
Special Function	Colorants/Dyes	Hask Mark Green Liquid	Exacto, Inc.	Liquid		
Special Function	Colorants/Dyes	Hi-Light	Becker-Underwood	Liquid		
Special Function	Colorants/Dyes	Hi-Light WSP	Becker-Underwood	Liquid		
Special Function	Colorants/Dyes	Marker Dye	Loveland Products, Inc.	Liquid		
Special Function	Colorants/Dyes	Mark-It Blue	Monterey AgResources	Liquid		
Special Function	Colorants/Dyes	Mark-It Red	Monterey AgResources	Liquid		
Special Function	Colorants/Dyes	Mystic HC	WinField United (Winfield Solutions, LLC)	Liquid		
Special Function	Colorants/Dyes	Signal	Precision Laboratories, LLC	Liquid		
Special Function	Colorants/Dyes	SPI-Max Blue Spray Marker	Prokoz	Liquid		
Special Function	Colorants/Dyes	Spray Indicator XL	Helena Agri-Enterprises, LLC (Helena Chemical Company)	Liquid		
Special Function	Colorants/Dyes	Turftrax	Loveland Products, Inc.	Liquid		
Special Function	Colorants/Dyes	Turftrax Blue Spray Indicator	Loveland Products, Inc.	Liquid		

Special Function	Compatibility/Suspension Agent	Convert	Precision Laboratories, LLC	Liquid		WA Reg. No. 9349-13007
Special Function	Compatibility/Suspension Agent	E Z Mix	Loveland Products, Inc.	Liquid	CA Reg. No. 36208-50006	
Special Function	Compatibility/Suspension Agent	Mix	Drexel Chemical Company	Liquid		
Special Function	Compatibility/Suspension Agent	Support	Loveland Products, Inc.	Liquid	WA Reg. No. 34704-04011	
Special Function	Defoaming Agent	Alligare Anti-Foamer	Alligare, LLC	Liquid		
Special Function	Defoaming Agent	Alligare Defoamer	Alligare, LLC	Liquid		
Special Function	Defoaming Agent	Cornbelt Defoamer	Van Diest Supply Co.	Liquid		
Special Function	Defoaming Agent	Defoamer	Brewer International	Liquid		
Special Function	Defoaming Agent	Fighter-F 10	Loveland Products, Inc.	Liquid		
Special Function	Defoaming Agent	Fighter-F Dry	Loveland Products, Inc.	Dry		
Special Function	Defoaming Agent	Foam Buster	Helena Agri-Enterprises, LLC (Helena Chemical Company)	Liquid	CA Reg. No. 5905-50072-AA	
Special Function	Defoaming Agent	Foam Fighter	Miller Chem. & Fert. Corp.	Liquid	CA Reg. No. 72-50005-AA	
Special Function	Defoaming Agent	Foambuster Max	Helena Agri-Enterprises, LLC (Helena Chemical Company)	Liquid		
Special Function	Defoaming Agent	Fome-Kil	Drexel Chemical Company	Liquid		
Special Function	Defoaming Agent	FTF Defoamer	Wilbur-Ellis Co. LLC (Wilbur-Ellis Co.)	Liquid		WA Reg. No. 2935-13002
Special Function	Defoaming Agent	Gundown Max	Precision Laboratories, LLC	Liquid		WA. Reg. No. 9349-13013
Special Function	Defoaming Agent	No Foam	Wilbur-Ellis Co. LLC (Wilbur-Ellis Co.)	Liquid	CA Reg. No. 2935-50136	
Special Function	Defoaming Agent	Red River Defoamer	Red River Specialities, Inc.	Liquid		
Special Function	Defoaming Agent	Revere	Exacto, Inc.	Liquid		
Special Function	Defoaming Agent	Suppression	Chemorse Ltd.	Liquid	CA Reg. No. 1050984-50007	WA Reg. No. 46059-12001
Special Function	Defoaming Agent	Tripleline	Creative Marketing & Research	Liquid	CA Reg. No. 1050775-50023-AA	
Special Function	Defoaming Agent	Unfoamer	Loveland Products, Inc.	Liquid	CA Reg. No. 34704-50062	WA Reg. No. 34709-09002
Special Function	Deposition Aid	Agripharm Drift Control	Walco International	Liquid		
Special Function	Deposition Aid	Alligare Downforce	Alligare, LLC	Liquid		
Special Function	Deposition Aid	Alligare Pattern	Alligare, LLC	Liquid	CA Reg. No. 81927-50008-AA	WA Reg. No. 81927-15003
Special Function	Deposition Aid	Bivert	Wilbur-Ellis Co. LLC (Wilbur-Ellis Co.)	Liquid	CA Reg. No. 2935-50163	
Special Function	Deposition Aid	Border AQ	Precision Laboratories, LLC	Liquid		WA Reg. No. 9349-13009
Special Function	Deposition Aid	Chem-Trol	Chemorse Ltd.	Liquid	CA Reg. No. 1050984-50001-AA	WA Reg. No. 1050984-50001
Special Function	Deposition Aid	Clasp	Helena Agri-Enterprises, LLC (Helena Chemical Company)	Liquid		WA Reg. No. 5905-13002
Special Function	Deposition Aid	Compadre	Loveland Products, Inc.	Liquid	CA Reg. No. 34704-50050	WA Reg. No. 34704-06004
Special Function	Deposition Aid	Coverage G-20	Wilbur-Ellis Co. LLC (Wilbur-Ellis Co.)	Liquid		
Special Function	Deposition Aid	Crosshair	Wilbur-Ellis Co. LLC (Wilbur-Ellis Co.)	Liquid		
Special Function	Deposition Aid	CWC Sharpshooter	CWC Chemical, Inc.	Liquid		
Special Function	Deposition Aid	Cygnnet Plus	Brewer International	Liquid	CA Reg. No. 1051114-50001	
Special Function	Deposition Aid	Diligence	Wilbur-Ellis Co. LLC (Wilbur-Ellis Co.)	Liquid		
Special Function	Deposition Aid	Direct	Precision Laboratories, LLC	Liquid		
Special Function	Deposition Aid	Droplex	WinField United (Winfield Solutions, LLC)	Liquid		
Special Function	Deposition Aid	EDT Concentrate	Wilbur-Ellis Co. LLC (Wilbur-Ellis Co.)	Liquid		
Special Function	Deposition Aid	Elite Secure Ultra	Red River Specialities, Inc.	Liquid		
Special Function	Deposition Aid	Exit	Miller Chem. & Fert. Corp.	Liquid	CA Reg. No. 72-50014-AA	
Special Function	Deposition Aid	Grounded	Helena Agri-Enterprises, LLC (Helena Chemical Company)	Liquid		
Special Function	Deposition Aid	Grounded - CA	Helena Agri-Enterprises, LLC (Helena Chemical Company)	Liquid	CA Reg. No. 5905-50096-AA	
Special Function	Deposition Aid	Grounded - W	Helena Agri-Enterprises, LLC (Helena Chemical Company)	Liquid		WA Reg. No. 5905-13001
Special Function	Deposition Aid	Infuse	Loveland Products, Inc.	Liquid		
Special Function	Deposition Aid	Intact Plus	Loveland Products, Inc.	Liquid		

Special Function	Deposition Aid	Interlock	WinField United (Winfield Solutions, LLC)	Liquid		
Special Function	Deposition Aid	Liberate	Loveland Products, Inc.	Liquid	CA Reg. No. 34704-50030-AA	WA Reg. No. 34704-04008
Special Function	Deposition Aid	LOX	Drexel Chemical Company	Liquid		
Special Function	Deposition Aid	LOX PLUS	Drexel Chemical Company	Liquid		
Special Function	Deposition Aid	Mist-Control	Miller Chem. & Fert. Corp.	Liquid	CA Reg. No. 72-50011-AA	
Special Function	Deposition Aid	Offside	Exacto, Inc.	Liquid		
Special Function	Deposition Aid	Pointblank	Helena Agri-Enterprises, LLC (Helena Chemical Company)	Liquid	CA Reg # 52467-50008-AA-5905	
Special Function	Deposition Aid	Poly Control 2	Brewer International	Liquid		
Special Function	Deposition Aid	Reign	Loveland Products, Inc.	Liquid	CA Reg. No. 34704-50045	WA Reg. No. 34704-05010
Special Function	Deposition Aid	Reign LC	Loveland Products, Inc.	Liquid	CA Reg. No. 34704-50048	
Special Function	Deposition Aid	Secure Ultra	Red River Specialities, Inc.	Liquid		
Special Function	Deposition Aid	Strike Zone DF	Helena Agri-Enterprises, LLC (Helena Chemical Company)	Dry	CA Reg. No. 5905-50084-AA	
Special Function	Deposition Aid	Sustain	Miller Chem. & Fert. Corp.	Liquid	CA Reg. No. 72-50015-AA	
Special Function	Deposition Aid	Syndetic	Chemorse Ltd.	Liquid	CA Reg. No. 1050984-50003-ZA	
Special Function	Deposition Aid	Volare DC	Precision Laboratories, LLC	Liquid	CA Reg. No. 9349-50004-AA	WA Reg. No. 9349-13006
Special Function	Deposition Aid	Weather Gard	Loveland Products, Inc.	Liquid	CA Reg. No. 34704-50042-AA	
Special Function	Diluent/Deposition Agent	Bark Oil	Crop Production Services	Liquid		
Special Function	Diluent/Deposition Agent	Bark Oil EC	Crop Production Services	Liquid		
Special Function	Diluent/Deposition Agent	Elite Premier	Red River Specialities, Inc.	Liquid		
Special Function	Diluent/Deposition Agent	Elite Premier Blue	Red River Specialities, Inc.	Liquid		
Special Function	Diluent/Deposition Agent	Hy-Grade EC	CWC Chemical, Inc.	Liquid		
Special Function	Diluent/Deposition Agent	Hy-Grade I	CWC Chemical, Inc.	Liquid		
Special Function	Diluent/Deposition Agent	Improved JLB Oil Plus	Brewer International	Liquid		
Special Function	Diluent/Deposition Agent	In-Place	Wilbur-Ellis Co. LLC (Wilbur-Ellis Co.)	Liquid	CA Reg. No. 2935-50169	
Special Function	Diluent/Deposition Agent	JLB Oil Plus	Brewer International	Liquid		
Special Function	Diluent/Deposition Agent	Red River Basal Oil	Red River Specialities, Inc.	Liquid		
Special Function	Diluent/Deposition Agent	Thinvert Concentrate	Waldrum Specialities, Inc.	Liquid		
Special Function	Diluent/Deposition Agent	Thinvert RTU	Waldrum Specialities, Inc.	Liquid		
Special Function	Diluent/Deposition Agent	W.E.B. Oil	Wilbur-Ellis Co. LLC (Wilbur-Ellis Co.)	Liquid	CA Reg. No. 2935-50166	WA Reg. No. AW 2935-70023
Special Function	Foam Marker	Align	Helena Agri-Enterprises, LLC (Helena Chemical Company)	Liquid		
Special Function	Foam Marker	F.M.-160	Drexel Chemical Company	Liquid		
Special Function	Foam Marker	R-160	Wilbur-Ellis Co. LLC (Wilbur-Ellis Co.)	Liquid		
Special Function	Foam Marker	Red River Foam Marker	Red River Specialities, Inc.	Liquid		
Special Function	Foam Marker	Trekker Trax	Loveland Products, Inc.	Liquid		
Special Function	Foam Marker	Tuff Trax Foam Concentration	Loveland Products, Inc.	Liquid		
Special Function	Invert Emulsion Agent	Redi-Vert II	Wilbur-Ellis Co. LLC (Wilbur-Ellis Co.)	Liquid	CA Reg. No. 2935-50168	
Special Function	Tank Cleaner	All Clear	Loveland Products, Inc.	Liquid		
Special Function	Tank Cleaner	Back Field	Exacto, Inc.	Liquid		
Special Function	Tank Cleaner	Cornbelt Tank-Aid	Van Diest Supply Co.	Liquid		
Special Function	Tank Cleaner	Elite Vigor	Red River Specialities, Inc.	Liquid		
Special Function	Tank Cleaner	Kutter	Wilbur-Ellis Co. LLC (Wilbur-Ellis Co.)	Liquid		
Special Function	Tank Cleaner	Neutral-Clean	Wilbur-Ellis Co. LLC (Wilbur-Ellis Co.)	Liquid		
Special Function	Tank Cleaner	Pro Tank	WinField United (Winfield Solutions, LLC)	Liquid		

