

2" TUBING STRING

2" Valve--> | X |

WELL # NB 88-21 TCH

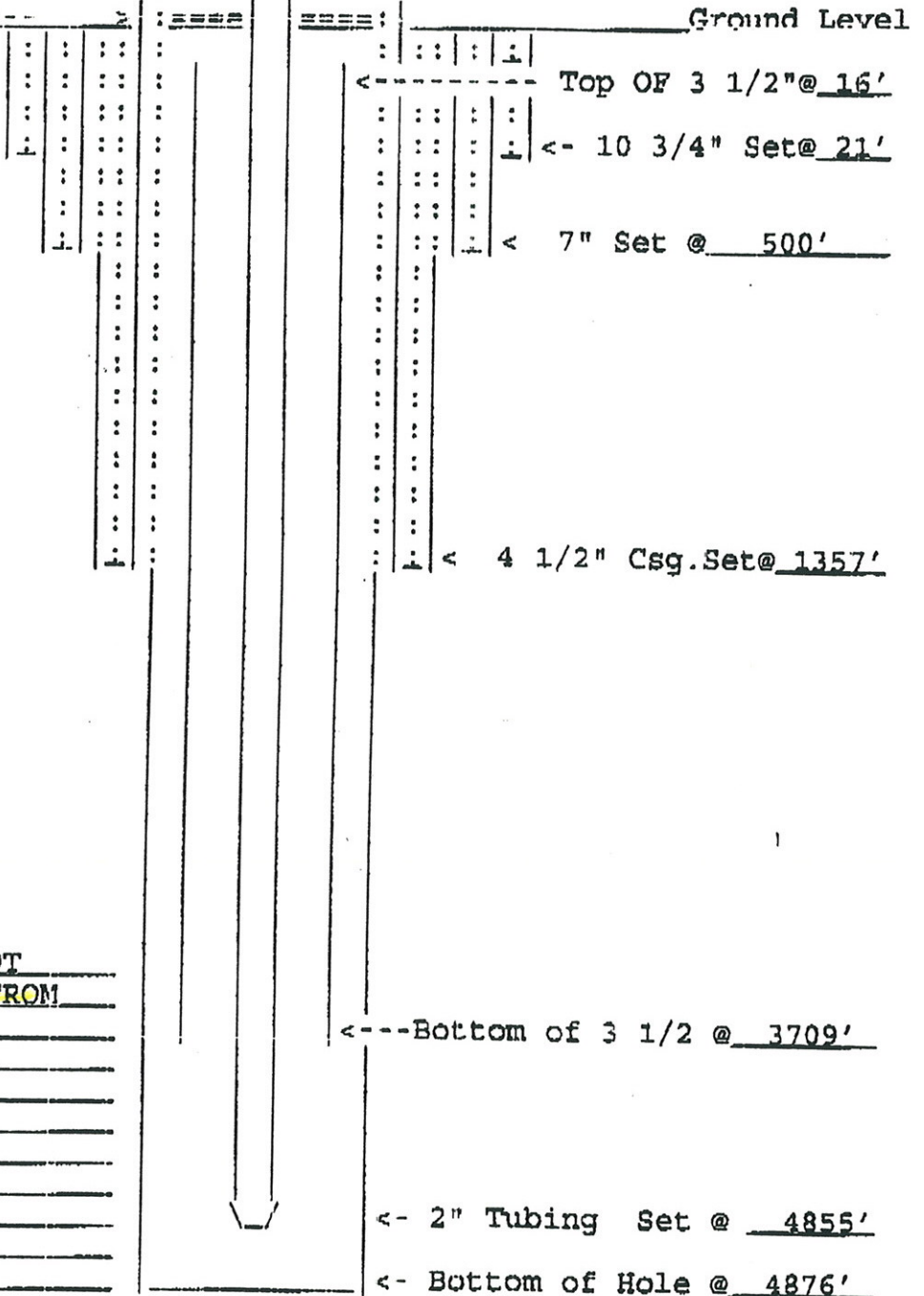
DATE RAN : 07/21/95

| X | <--2" Valve

Tubing Flange----> |-----|

Tubing Doughnut  
set in 4 1/2 csg.  
wellhead.

Ground Level



2" Tubing

# of Jts. 154  
Wt. 3.4  
Gr. J-55  
Thread. BUTT.

3 1/2" HO PIPE NOT  
CEMENTED. PIPE STUCK FROM  
3709' UP TO 16'

<---Bottom of 3 1/2 @ 3709'

<- 2" Tubing Set @ 4855'

<- Bottom of Hole @ 4876'

NOTE : ALL MEASUREMENTS FROM KB.

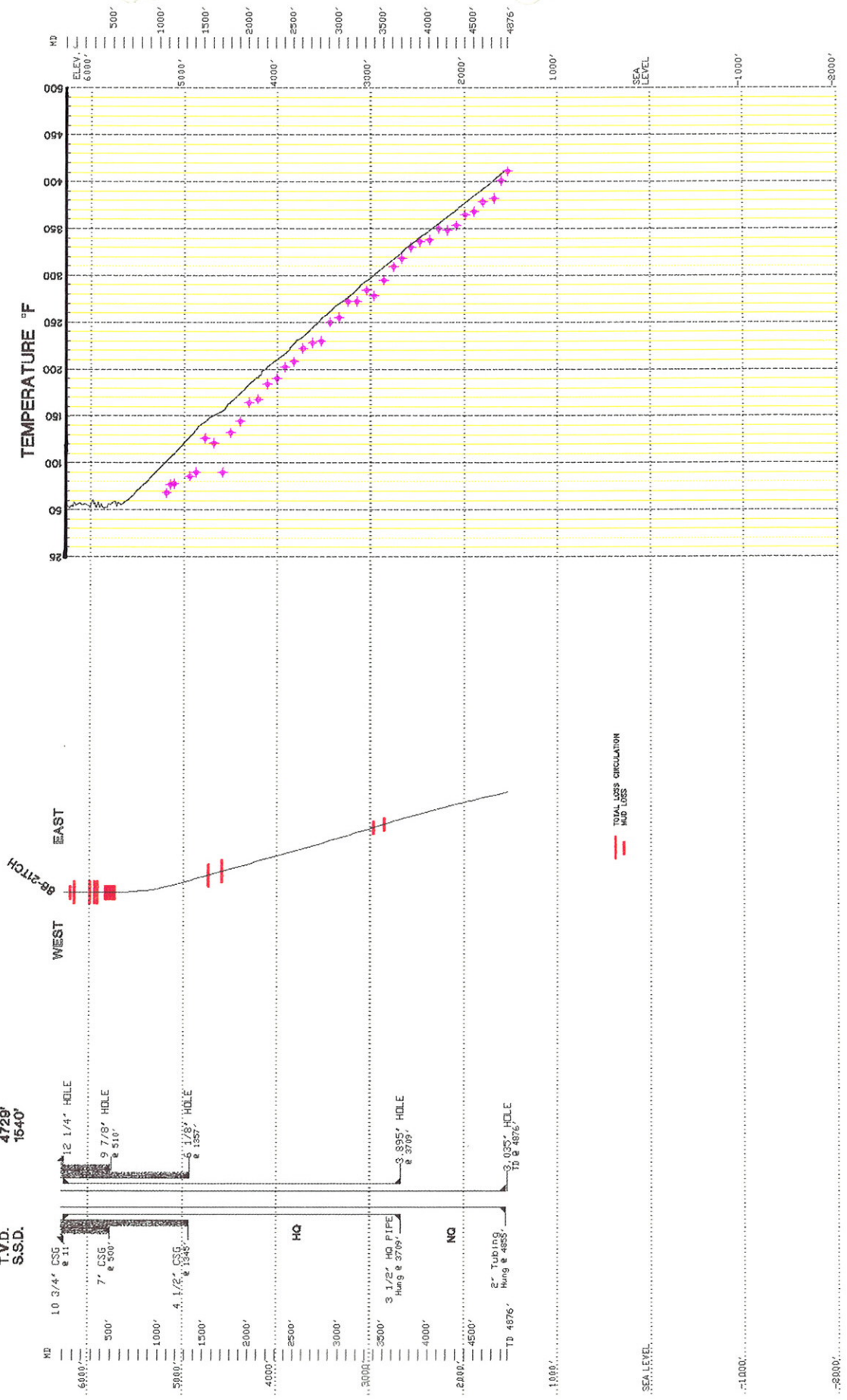
Supervisor : Richard Lemon

# NEWBERRY 88-21TCH

CONFIDENTIAL

SPUD 5/10/95  
 COMPLETION 7/21/95  
 T.D. 4878'  
 T.V.D. 4729'  
 S.S.D. 1640'

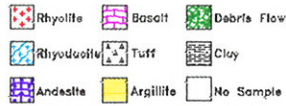
— 88-21TCH 4 Days Post Completion SANDIA 7/25/95  
 \* 88-21TCH MRT White Coring





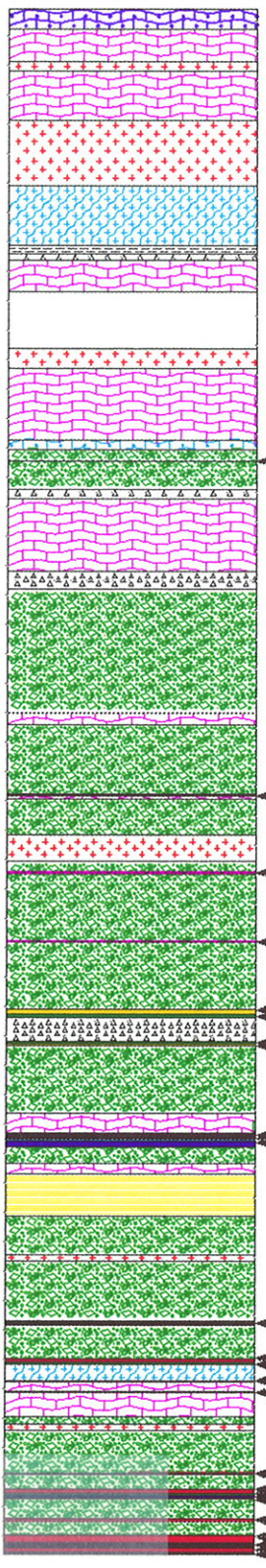
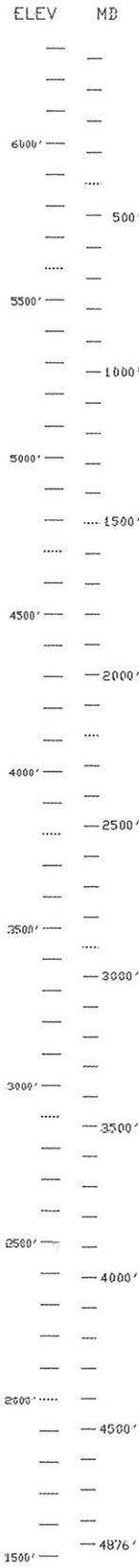
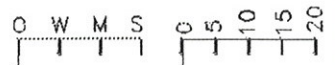
# NEWBERRY 88-21TCH

## LITHOLOGY



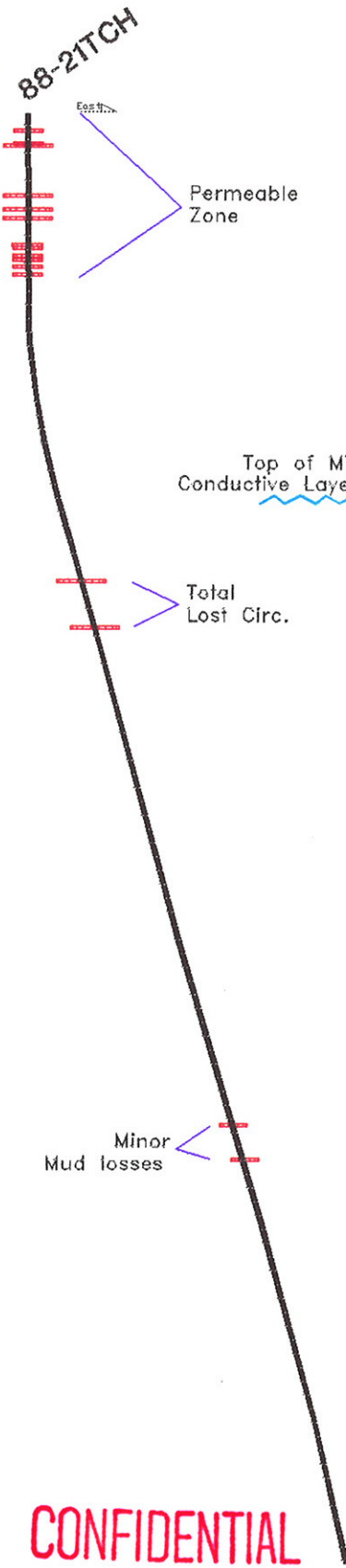
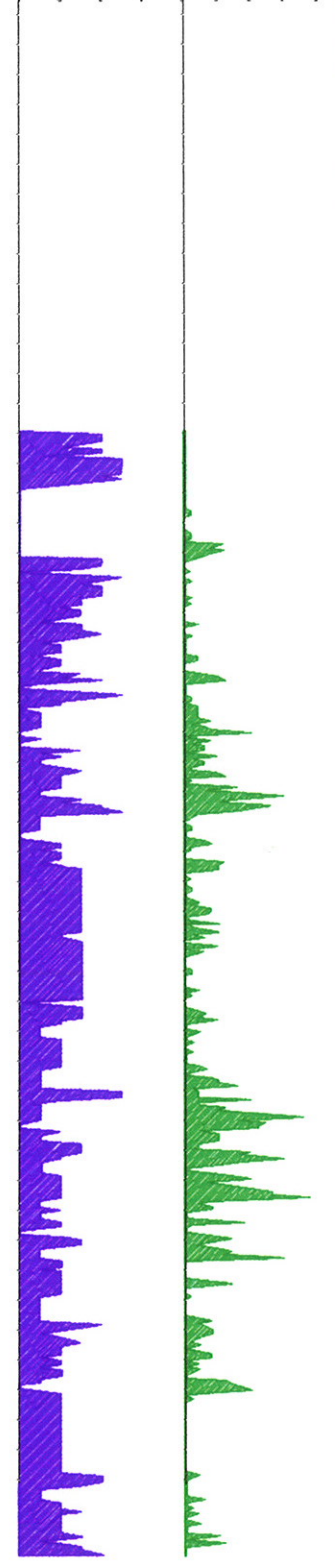
## CLAY ALT. INTENSITY

## HYDROTHERMAL VEINS



Logged Drill Cuttings

Logged Core



**CONFIDENTIAL**