

CALIFORNIA ENERGY CO. BEND HIGHLANDS COREHOLE CEBH-7

Lithology

Temperature, °F

40 50 60 70 80 90

1000

Depth, Ft.

2000

3000

97.8°F

⊕ Bottom hole temperatures while drilling
(maximum recording thermometer)

— Geotech Data Temperature survey
10/04/92; 60 days past completion

Tmax: 97.8°F@3375'

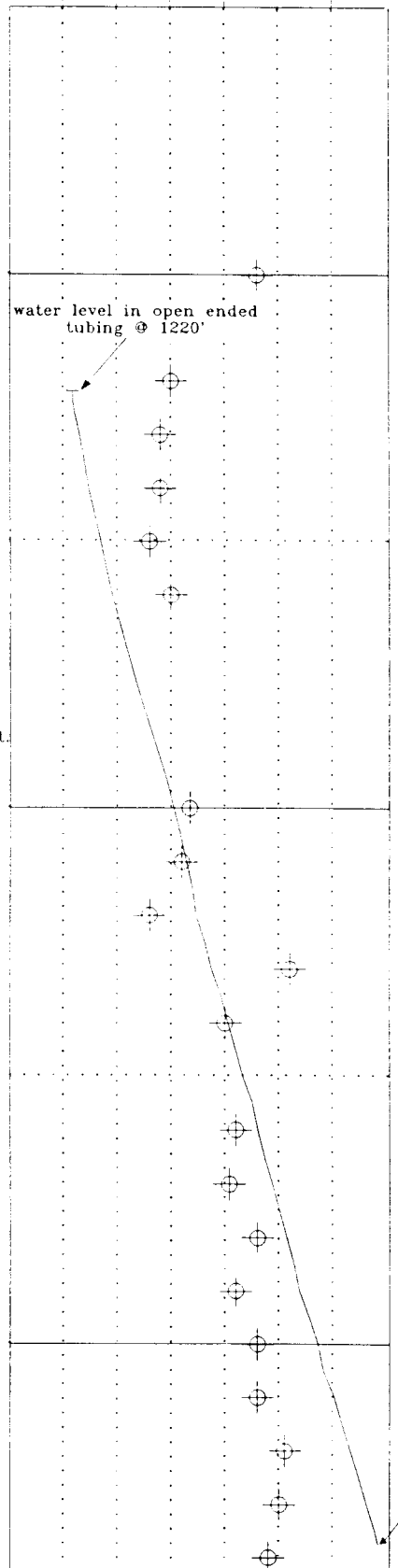
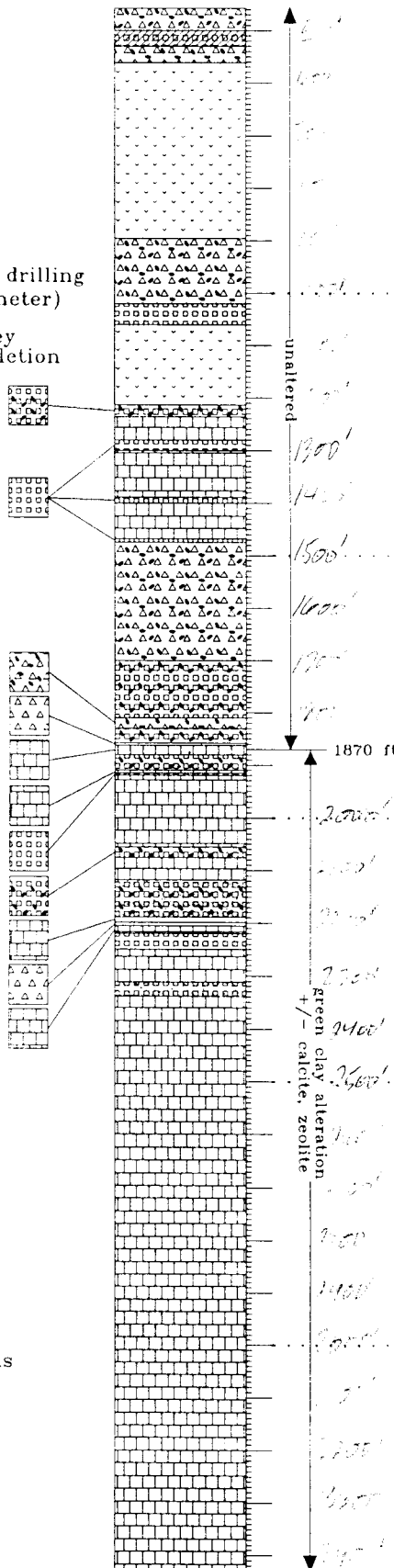
Tgradient: 3.1°F/100'
(3040-3370')

Wg. fine to med. blk.

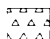
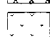

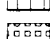
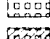
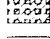
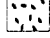
tan. calc. breccias

100' sil. scoria

SA (2-199-230)



Lithology Key

-  Silicic tuff, usually w/pumice
-  Silicic lava
-  Intermediate-mafic lava
-  Intermediate-mafic tuffs/breccias
-  Intermediate-mafic scoria
-  Abundant lithic fragments
-  Sandy intervals

TD 3430'