



2"=100'

COMPENSATED
ACOUSTIC VELOCITY
LOG

COMPANY REICHHOLD ENERGY CORPORATION
 WELL HAMMERBERG NO. 1 REDRILL NO. 1
 FIELD NEHALEM BASIN
 COUNTY COLUMBIA STATE OREGON
 LOCATION 209' NORTH & 612' WEST OF THE EAST QUARTER CORNER OF THE EAST QUARTER CORNER OF (W.B. & M.)
 Sec. 14 Twp. 6N Rge. 5W Elev. K.B. 564.1
 Log Measured From G.S. 0R Elev. 553.6
 D.F. 553.6
 G.L. 553.6
 Date 9-20-79
 Run No. 01E
 Pad No. 3318
 Depth—Water 3315
 Btm. Log Meter 460
 Tool Log Meter 460
 Casing—O.D. 7" @ 398
 Casing—W.O.D. 400
 Bit Size 6 1/4
 Type Fluid in Hole LIQUID SOULF
 Pore Visc. 78 1.40
 pH 9.0 1.60ml
 Source of Sample P.T.
 R₁₀ @ Meas. Temp. 2.48 @ 80 °F
 R₁₀ @ Meas. Temp. 2.24 @ 76 °F
 R₁₀ @ Meas. Temp. 3.00 @ 76 °F
 Source R₁₀ MEASURED
 T₁₀ @ Meas. Temp. 1.69 @ 117 °F
 T₁₀ @ Meas. Temp. 1.45 @ 117 °F
 T₁₀ @ Meas. Temp. 1.94 @ 117 °F
 Equip. Location 9430 I WBLND
 Max. Rec. Temp. 117 °F @ BHT
 Recorded By KENNEDY
 Witnessed By FRY, BURDIE, CLARE

Change in Mud Type or Additional Samples		SCALE CHANGES		
Date	Sample No.	Type Log	Depth	Scale Up Hole
Type Fluid in Hole				

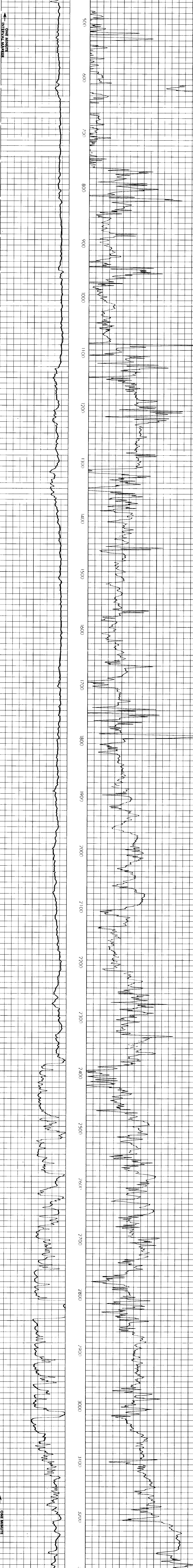
Dens. Visc.		pH		Fluid Loss		Source of Sample		EQUIPMENT DATA	
R ₁₀ @ Meas. Temp.	R ₁₀ @ Meas. Temp.	R ₁₀ @ Meas. Temp.	R ₁₀ @ Meas. Temp.	R ₁₀ @ Meas. Temp.	R ₁₀ @ Meas. Temp.	R ₁₀ @ Meas. Temp.	R ₁₀ @ Meas. Temp.	Run No.	Tool Type and No.
@	@	@	@	@	@	@	@	01E	C / AVL 13918
									FREE

WELX does not guarantee the accuracy of any interpretation of log data, conversion of log data to physical rock parameters, or recommendations which may be given by WELX personnel or which may appear on the log or in any other form. Any user of such data, interpretations, conversions, or recommendations agrees that WELX is not responsible, except where due to gross negligence or willful misconduct, for any loss, damages, or expenses resulting from the use thereof.

2" = 100'

POTENTIAL MILLIVOLTS	
+	-

TRAVEL TIME	
MICROSECONDS PER FT.	
T ₁₀ R ₁₀ Z ₁₀	



POTENTIAL MILLIVOLTS	
+	-

TRAVEL TIME	
MICROSECONDS PER FT.	
T ₁₀ R ₁₀ Z ₁₀	

REICHHOLD ENERGY CORPORATION
 HAMMERBERG NO. 1 REDRILL NO. 1
 NEHALEM BASIN
 COLUMBIA COUNTY, OREGON

T.D. LOGGED 3315
 T.D. DRILLER 3318
 T.D. WELX 3318
 ELEV. KB 564.1 GL 553.6

REPEAT SECTION