

# Differential Temperature Log

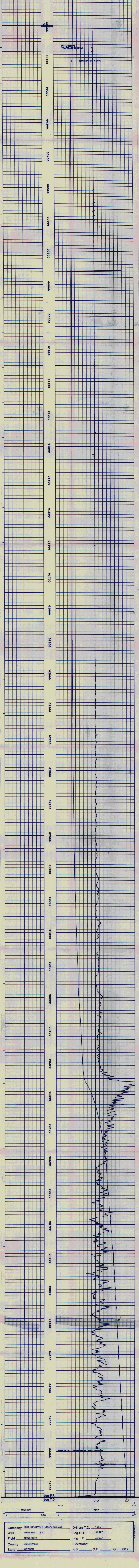
COMPANY: GEO OPERATOR CORPORATION  
 WELL: NEWBERRY #1  
 FIELD: NEWBERRY  
 COUNTY: DESCHUTES  
 STATE: OREGON  
 LOCATION: 3600' W. & 2750' N. OF S.E. CORNER OF: ACAL DB BIC/AL

DATE: MAR 13 1986  
 TIME: 12:59:31  
 RUN: 1  
 MODE: RECORD

Permanent Datum: G.L. 5840'  
 Log Measured from: G.L. 5840'  
 Datum Measured from: G.L. 5840'  
 Run No.: 012-585  
 Service Order: 33975

Depth - Corral: 4550'  
 Depth - Logged Interval: 0'  
 Casing - Driller: 4" @ 1800'

Bit Size in Hole	3 1/2"	NOT LOGGED
Density and Viscosity	NA	
pH and Fluid Loss		
Source of Sample		
Form & Mass Temp.		
Form @ Mass Temp.		
Source of Fluid and Form.		
Form @ BHT		
Form @ Casing		
Form @ Log		
Form @ SAC		



Company	GEO OPERATOR CORPORATION	Drillers T.D.	4550'
Well	NEWBERRY #1	Log F.R.	4540'
Field	NEWBERRY	Log T.D.	4540'
County	DESCHUTES	Elevations:	
State	OREGON	K.B.	-
		D.F.	-
		G.L.	5840'