

COMPANY GEO OPERATOR CORPORATION FOR
WELL N-2
FIELD NEMBERY CRATER
COUNTY NA
STATE OREGON

PERMIT DURATION 4
LOG MEASURED FROM N-2
DATE 10-21-86
ELEV 5840
ELEV ABOVE PERMITTED ELEV OF 5840

Bottom Logged Interval 43394' - 43395'
Casing - Lower 43394' - 43395'
Casing - Upper 43394' - 43395'

RT (OHM) 500
RT (OHM) 50
SN (OHM) 500
SN (OHM) 50

COND (MHU) 1000
SP (MU) 100

TYPE Hole in Location 4.0
RT Size 3.85
Casing - Lower 4.75
Casing - Upper 4.75

Source of Mud and Mud Losses
Mud & Water Temp
Mud & MWD
Mud & MWD
Mud & MWD

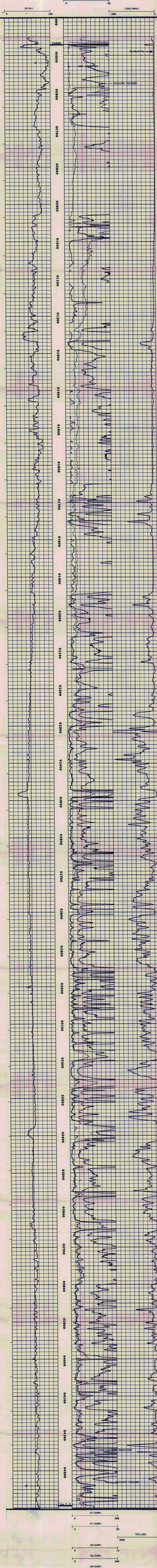
IN MAKING INTERPRETATIONS OF LOGS OUR EMPLOYEES WILL GIVE DUE CARE TO THE BEST OF THEIR KNOWLEDGE AND SKILL. WE WILL NOT BE RESPONSIBLE FOR ANY LOSS OF TIME, DAMAGES, OR EXPENSES INCURRED BY ANY OF OUR EMPLOYEES.

REMARKS RUN (1)
ON BOTTOM AT 1439 HR
T1=365 DEG. F T2=313 DEG. F

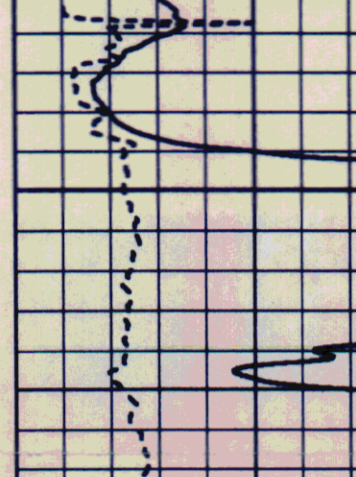
EQUIPMENT DATA table with columns: RUN TRIP, TOOL, SERIAL NO., SERIES NO., POSITION

COMPANY: G.E.O. OPERATOR CORP. FOR GEO NEMBERY
WELL NWE: N-2
SERVICE: KC237A
REVISION: FSYSAL REV 0007 VER 7

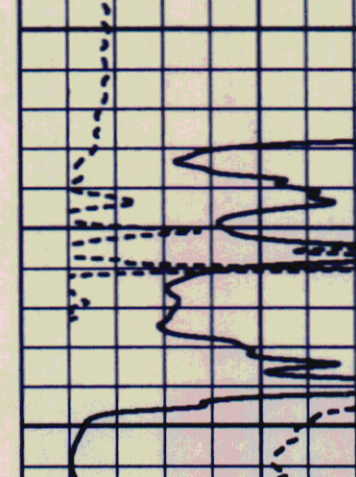
RUN: 1
TRIP: 1
DATE: 10/21/86
MODE: RECORD



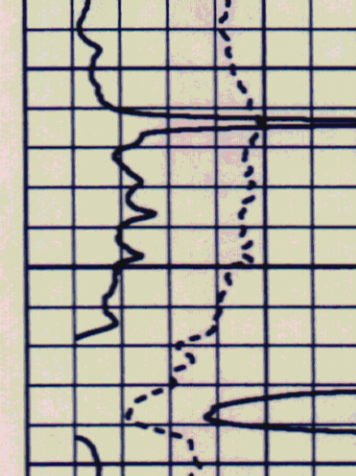
REPEAT SECTION



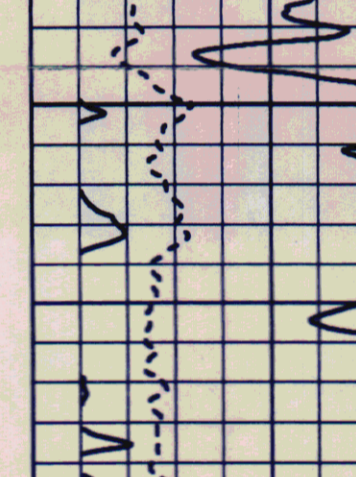
DEEP INDUCTION



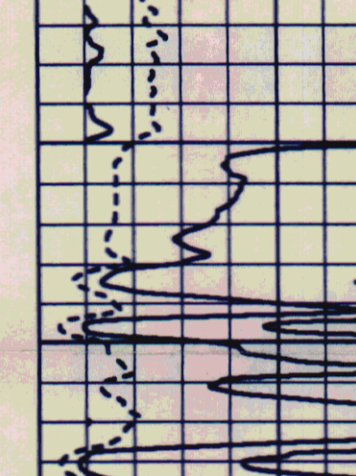
SHALLOW FOCUSED



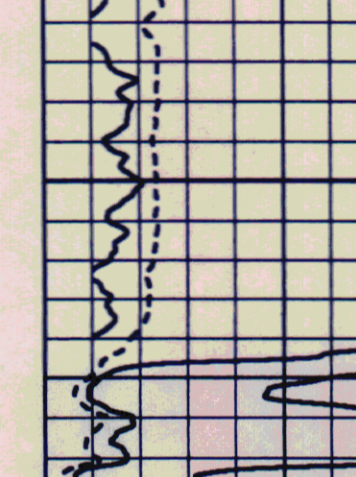
DEEP INDUCTION



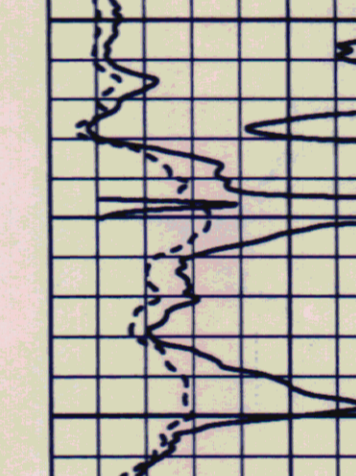
SHALLOW FOCUSED



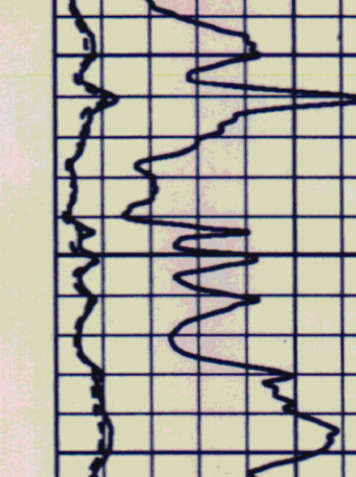
DEEP INDUCTION



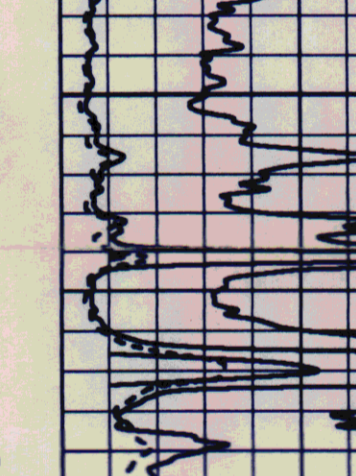
SHALLOW FOCUSED



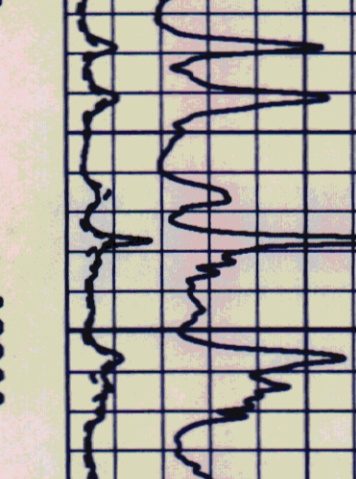
DEEP INDUCTION



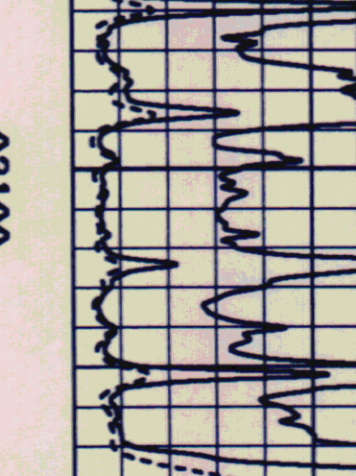
SHALLOW FOCUSED



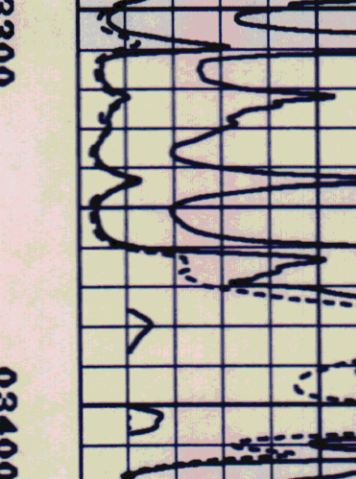
DEEP INDUCTION



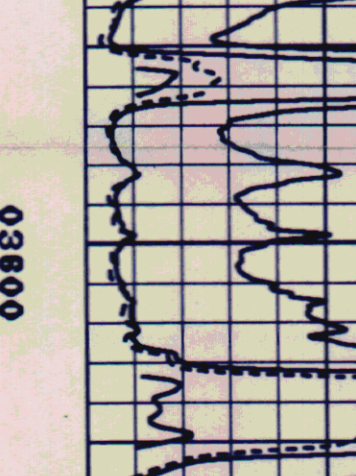
SHALLOW FOCUSED



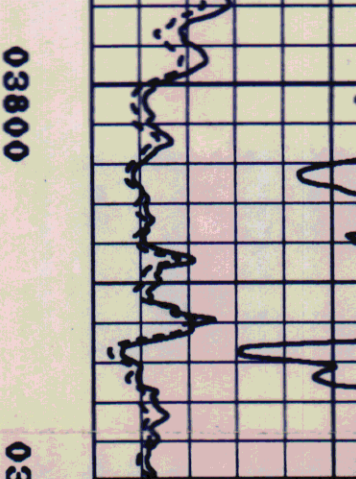
DEEP INDUCTION



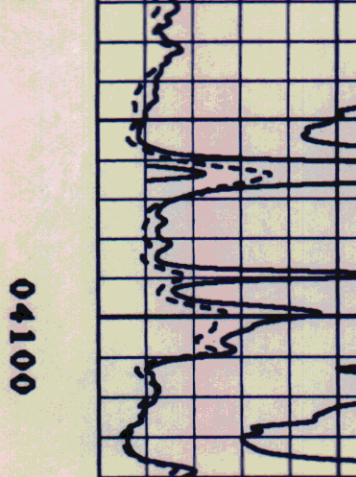
SHALLOW FOCUSED



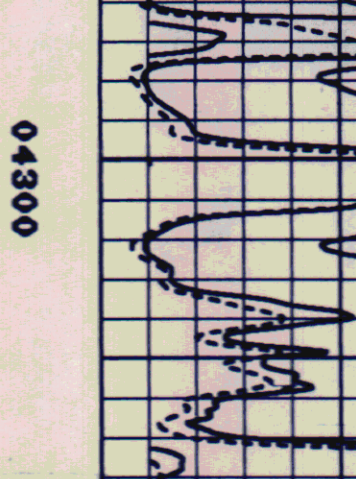
DEEP INDUCTION



SHALLOW FOCUSED



DEEP INDUCTION



SHALLOW FOCUSED

