

TEMPERATURE/DEPTH DATA

HOLE NO: N-4

GEOTECH JOB NO: 2-87

CONFIDENTIAL

RUN 1

RUN DATE: 11/03/87

DEPTH (FEET)	TEMPERATURE (DEG F)	GRADIENT (DEG F/100 FT)	DEPTH (FEET)	TEMPERATURE (DEG F)	GRADIENT (DEG F/100 FT)
400	41.62		900	42.90	2.4
410	41.50	-1.2	910	43.42	5.2
420	41.40	-1.0	920	44.06	6.4
430	42.87	14.7	930	44.58	5.2
440	43.94	10.7	940	45.21	6.3
450	45.76	18.2	950	45.55	3.4
460	46.34	5.8	960	45.32	-2.3
470	43.73	-26.1	970	45.27	-1.5
480	41.31	-24.2	980	45.37	1.0
490	40.69	-6.2	990	45.54	1.7
500	41.69	10.0	1000	45.82	2.8
510	42.57	8.8	1010	46.04	2.2
520	43.35	7.8	1020	46.19	1.5
530	43.90	5.5	1030	46.34	1.5
540	44.78	8.8	1040	46.56	2.2
550	44.78	0.0	1050	46.92	3.6
560	42.04	-27.4	1060	47.15	2.3
570	40.94	-11.0	1070	47.47	3.2
580	40.67	-2.7	1080	47.74	2.7
590	40.69	.2	1090	48.01	2.7
600	40.72	.3	1100	48.33	3.2
610	40.75	.3	1110	48.86	5.3
620	40.84	.9	1120	49.32	4.6
630	40.89	.5	1130	49.86	5.4
640	41.13	2.4	1140	50.44	5.8
650	41.38	2.5	1150	50.96	5.2
660	41.31	-.7	1160	51.82	8.6
670	41.37	.6	1170	52.40	5.8
680	41.66	2.9	1180	52.55	1.5
690	41.79	1.3	1190	52.59	.4
700	41.87	.8	1200	52.61	.2
710	41.83	-.4	1210	52.65	.4
720	42.14	3.1	1220	52.70	.5
730	42.39	2.5	1230	52.74	.4
740	42.43	.4	1240	52.80	.6
750	42.47	.4	1250	52.85	.5
760	42.45	-.2	1260	52.89	.4
770	42.32	-1.3	1270	52.94	.5
780	42.35	.3	1280	53.02	.8
790	42.41	.6	1290	53.11	.9
800	42.57	1.6	1300	53.38	2.7
810	42.90	3.3	1310	53.82	4.4
820	43.34	4.4	1320	53.99	1.7
830	43.42	.8	1330	54.02	.3
840	43.05	-3.7	1340	54.07	.5
850	42.84	-2.1	1350	54.10	.3
860	42.86	.2	1360	54.23	1.3
870	42.82	-.4	1370	54.40	1.7
880	42.71	-1.1	1380	54.88	4.8
890	42.66	-.5	1390	55.09	2.1

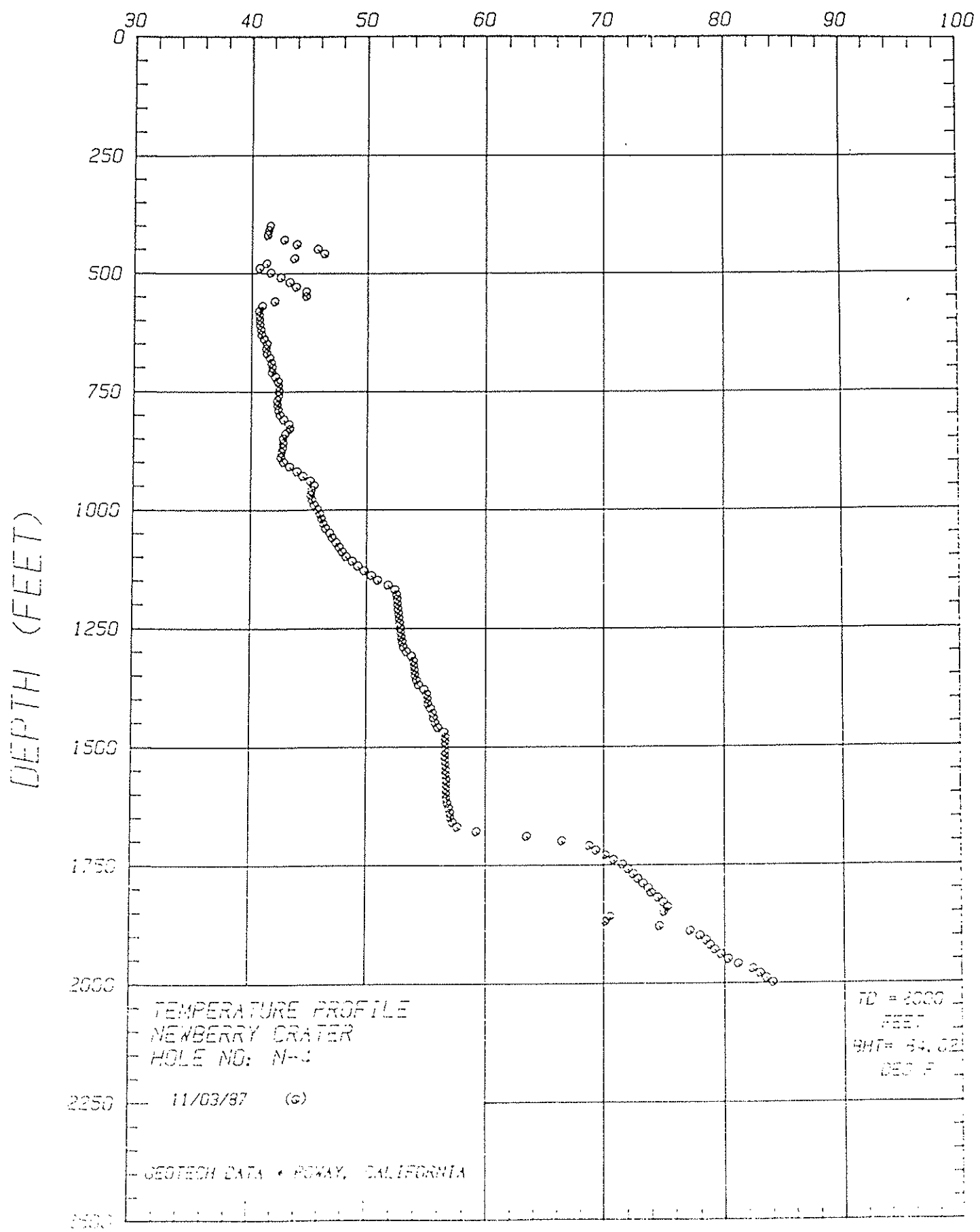
HOLE NO: N-4
 GEOTECH JOB NO: 2-87

RUN 1

RUN DATE: 11/03/87

DEPTH (FEET)	TEMPERATURE (DEG F)	GRADIENT (DEG F/100 FT)	DEPTH (FEET)	TEMPERATURE (DEG F)	GRADIENT (DEG F/100 FT)
1400	55.14	.5	1900	77.97	7.9
1410	55.18	.4	1910	78.48	5.1
1420	55.41	2.3	1920	78.82	3.4
1430	55.59	1.8	1930	79.19	3.7
1440	55.66	.7	1940	79.72	5.3
1450	55.78	1.2	1950	80.33	6.1
1460	56.02	2.4	1960	81.16	8.3
1470	56.55	5.3	1970	82.33	11.7
1480	56.63	.8	1980	82.96	6.3
1490	56.61	-.2	1990	83.46	5.0
1500	56.57	-.4	2000	84.02	5.6
1510	56.61	.4			
1520	56.60	-.1			
1530	56.61	.1			
1540	56.62	.1			
1550	56.67	.5			
1560	56.66	-.1			
1570	56.72	.6			
1580	56.71	-.1			
1590	56.69	-.2			
1600	56.70	.1			
1610	56.72	.2			
1620	56.82	1.0			
1630	56.93	1.1			
1640	57.04	1.1			
1650	57.04	0.0			
1660	57.24	2.0			
1670	57.64	4.0			
1680	59.24	16.0			
1690	63.45	42.1			
1700	66.44	29.9			
1710	68.77	23.3			
1720	69.38	6.1			
1730	70.16	7.8			
1740	70.85	6.9			
1750	71.59	7.4			
1760	72.06	4.7			
1770	72.49	4.3			
1780	72.86	3.7			
1790	73.29	4.3			
1800	73.71	4.2			
1810	73.96	2.5			
1820	74.51	5.5			
1830	74.95	4.4			
1840	75.33	3.8			
1850	75.01	-3.2			
1860	70.53	-44.8			
1870	70.16	-3.7			
1880	74.63	44.7			
1890	77.18	25.5			

TEMPERATURE (°F)



TEMPERATURE PROFILE
NEWBERRY CRATER
HOLE NO: N-1

TD = 2000
FEET
BHT = 54.52
DEC F

11/03/87 (c)

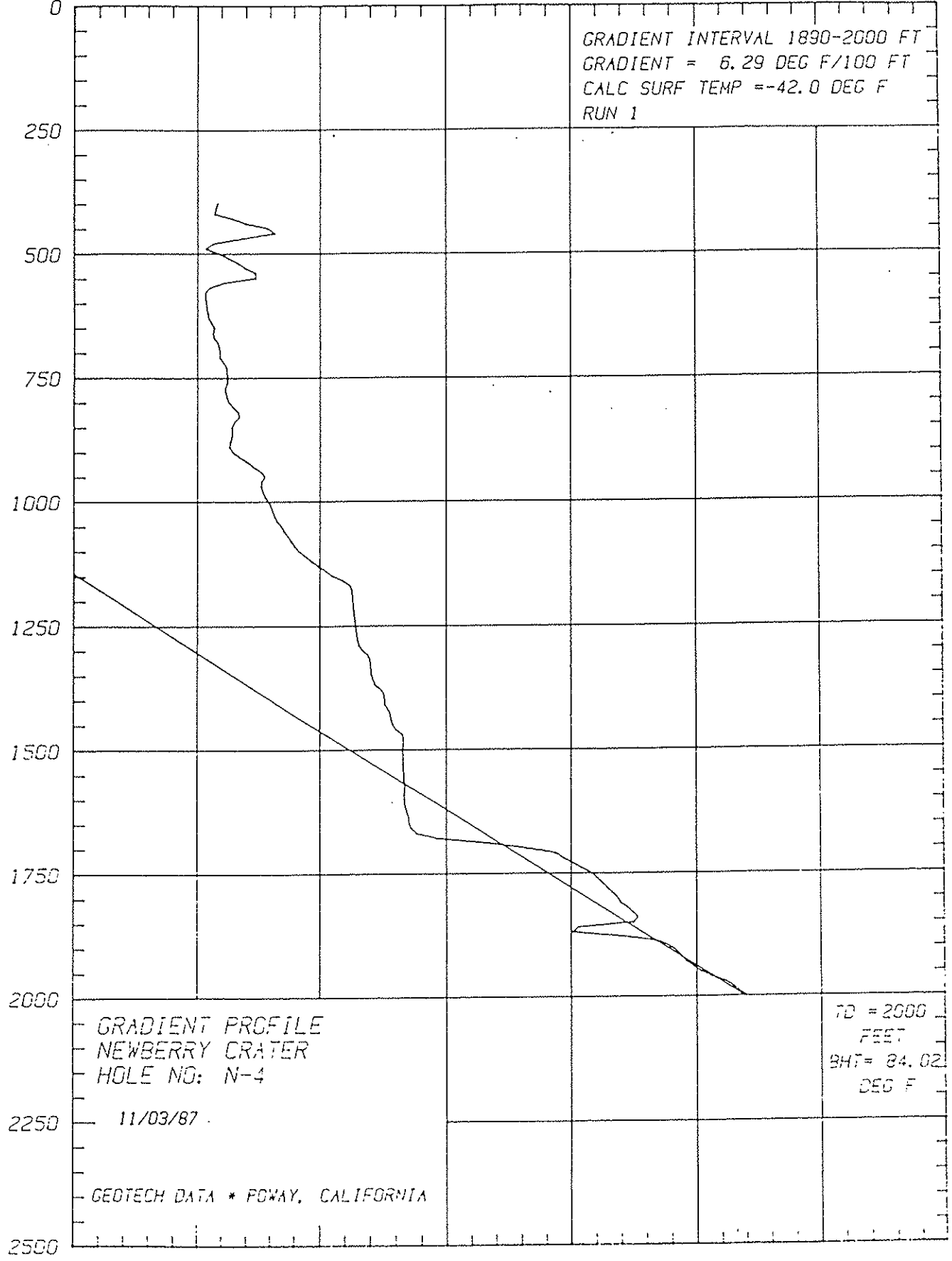
TEMPERATURE (°F) CONT

50

30 40 50 60 70 80 90 100

GRADIENT INTERVAL 1890-2000 FT
GRADIENT = 6.29 DEG F/100 FT
CALC SURF TEMP = -42.0 DEG F
RUN 1

DEPTH (FEET)



GRADIENT PROFILE
NEWBERRY CRATER
HOLE NO: N-4

TD = 2000
FEET
BHT = 84.02
DEG F

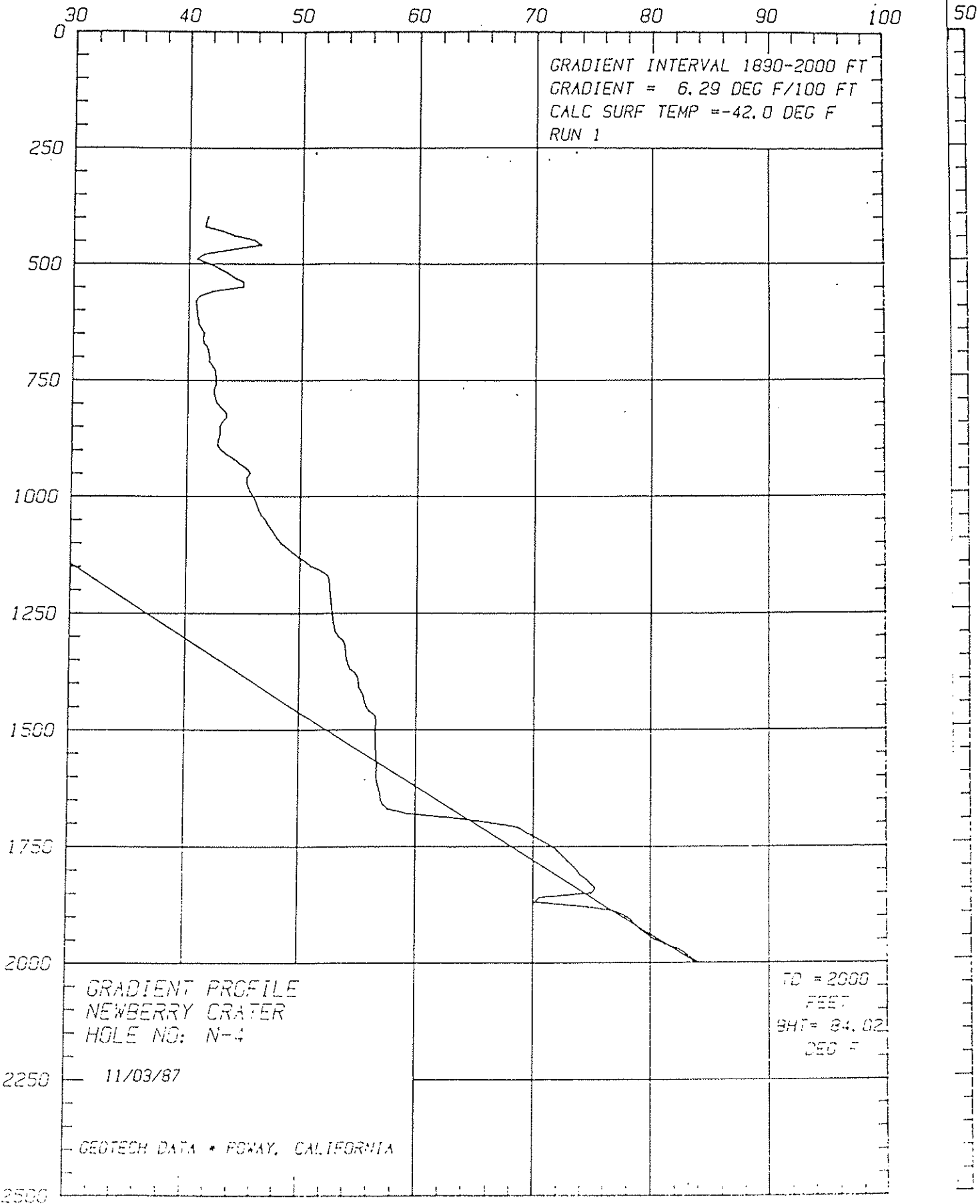
11/03/87

GEOTECH DATA * POWAY, CALIFORNIA

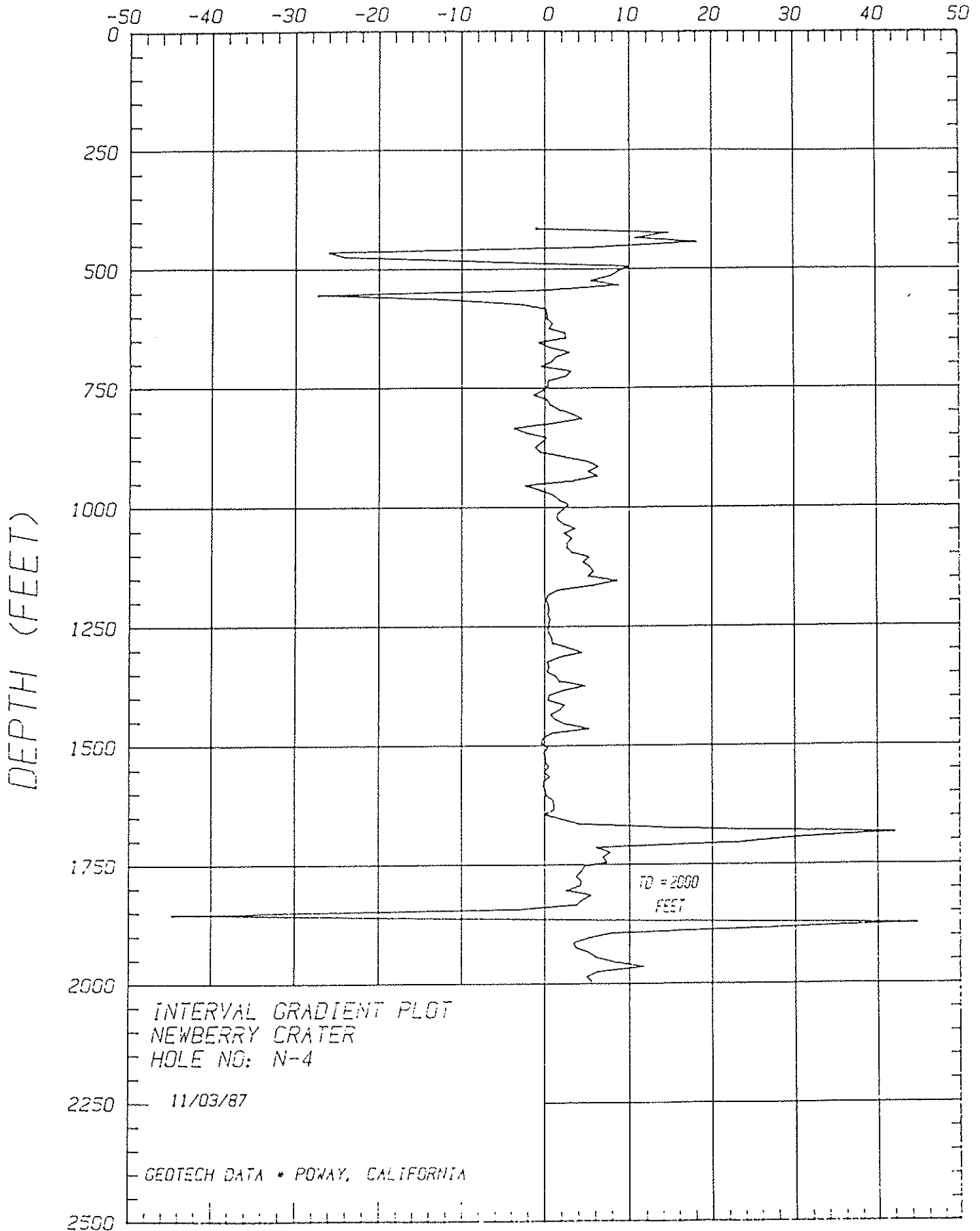
2500

TEMPERATURE (°F)

CUM...
CONTINENTAL



GRADIENT (°F/100 FT)



CONFIDENTIAL

CONFIDENTIAL

TEMPERATURE/DEPTH DATA

HOLE NO: N-4

GEOTECH JOB NO: 2-87

RUN 2

RUN DATE: 11/21/87

DEPTH (FEET)	TEMPERATURE (DEG F)	GRADIENT (DEG F/100 FT)	DEPTH (FEET)	TEMPERATURE (DEG F)	GRADIENT (DEG F/100 FT)
400	40.83		900	42.67	3.1
410	40.89	.6	910	43.05	3.8
420	41.57	6.8	920	43.63	5.8
430	42.30	7.3	930	44.33	7.0
440	43.14	8.4	940	44.76	4.3
450	44.40	12.6	950	45.25	4.9
460	44.92	5.2	960	45.20	-5.5
470	43.35	-15.7	970	45.16	-4.4
480	41.25	-21.0	980	45.24	.8
490	40.44	-8.1	990	45.42	1.8
500	40.91	4.7	1000	45.67	2.5
510	41.84	9.3	1010	45.97	3.0
520	42.60	7.6	1020	46.12	1.5
530	43.31	7.1	1030	46.29	1.7
540	44.01	7.0	1040	46.50	2.1
550	44.33	3.2	1050	46.80	3.0
560	41.95	-23.8	1060	47.09	2.9
570	40.88	-10.7	1070	47.36	2.7
580	40.44	-4.4	1080	47.66	3.0
590	40.36	-.8	1090	48.01	3.5
600	40.36	0.0	1100	48.33	3.2
610	40.40	.4	1110	48.83	5.0
620	40.49	.9	1120	49.26	4.3
630	40.57	.8	1130	49.88	6.2
640	40.73	1.6	1140	50.42	5.4
650	40.92	1.9	1150	51.00	5.8
660	40.91	-.1	1160	51.86	8.6
670	41.00	.9	1170	52.36	5.0
680	41.21	2.1	1180	52.56	2.0
690	41.37	1.6	1190	52.60	.4
700	41.46	.9	1200	52.65	.5
710	41.47	.1	1210	52.72	.7
720	41.72	2.5	1220	52.78	.6
730	41.94	2.2	1230	52.84	.6
740	42.04	1.0	1240	52.92	.8
750	42.09	.5	1250	52.97	.5
760	42.12	.3	1260	53.03	.6
770	42.06	-.6	1270	53.08	.5
780	42.09	.3	1280	53.17	.9
790	42.15	.6	1290	53.25	.8
800	42.28	1.3	1300	53.47	2.2
810	42.57	2.9	1310	53.83	3.6
820	42.93	3.6	1320	53.99	1.6
830	43.06	1.3	1330	54.02	.3
840	42.85	-2.1	1340	54.07	.5
850	42.62	-2.3	1350	54.11	.4
860	42.55	-.7	1360	54.20	.9
870	42.51	-.4	1370	54.41	2.1
880	42.39	-1.2	1380	54.79	3.8
890	42.36	-.3	1390	55.11	3.2

CONFIDENTIAL

CONFIDENTIAL

HOLE NO: N-4

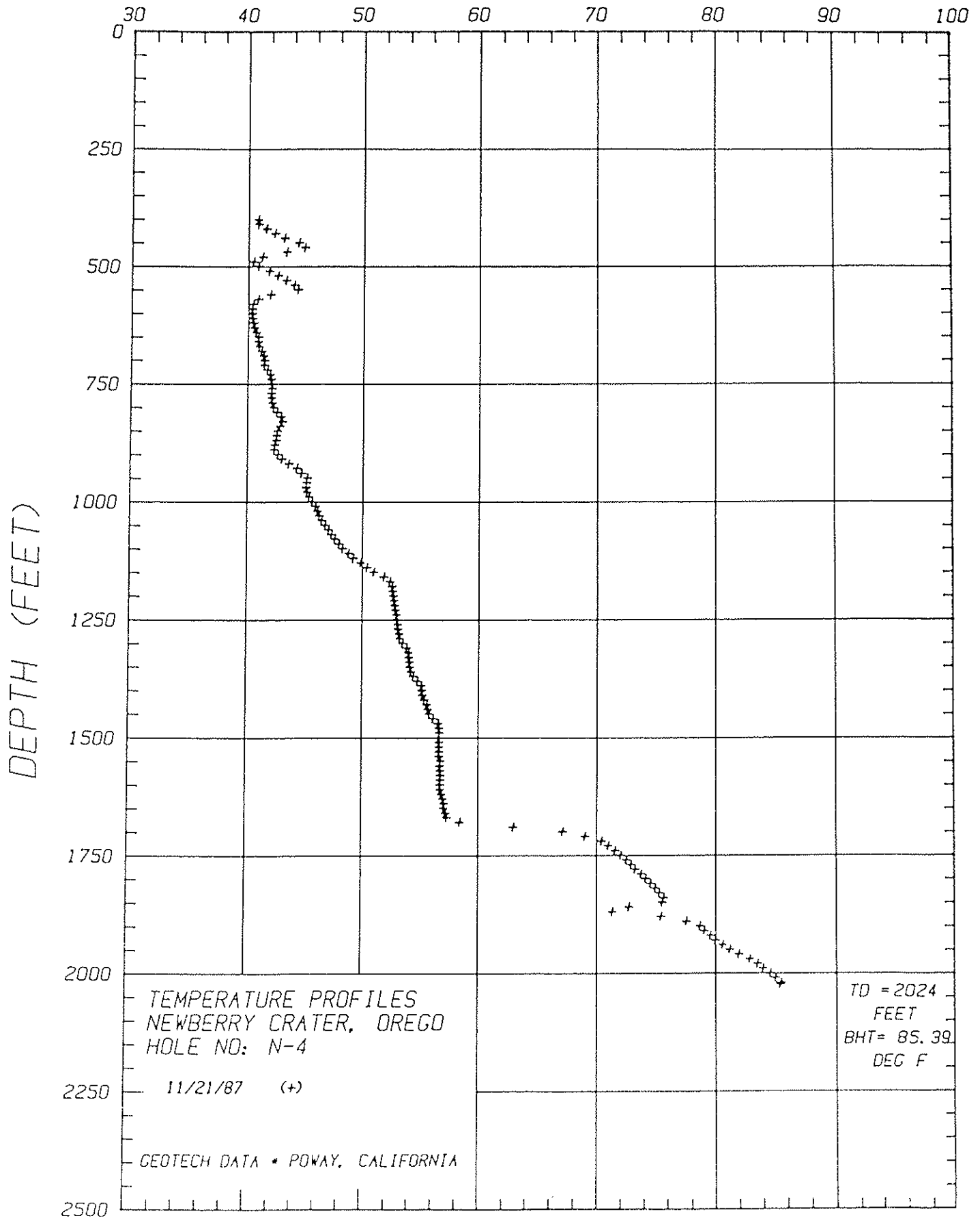
GEOTECH JOB NO: 2-87

RUN 2

RUN DATE: 11/21/87

DEPTH (FEET)	TEMPERATURE (DEG F)	GRADIENT (DEG F/100 FT)	DEPTH (FEET)	TEMPERATURE (DEG F)	GRADIENT (DEG F/100 FT)
1400	55.15	.4	1900	78.66	11.3
1410	55.20	.5	1910	79.03	3.7
1420	55.37	1.7	1920	79.54	5.1
1430	55.59	2.2	1930	79.99	4.5
1440	55.67	.8	1940	80.58	5.9
1450	55.80	1.3	1950	81.19	6.1
1460	56.12	3.2	1960	81.95	7.6
1470	56.57	4.5	1970	82.84	8.9
1480	56.65	.8	1980	83.50	6.6
1490	56.68	.3	1990	83.98	4.8
1500	56.62	-0.6	2000	84.57	5.9
1510	56.64	.2	2010	85.00	4.3
1520	56.65	.1	2020	85.48	4.8
1530	56.65	0.0	2024	85.39	-2.3
1540	56.65	0.0			
1550	56.75	1.0			
1560	56.71	-0.4			
1570	56.74	.3			
1580	56.76	.2			
1590	56.74	-0.2			
1600	56.74	0.0			
1610	56.75	.1			
1620	56.85	1.0			
1630	56.96	1.1			
1640	57.06	1.0			
1650	57.06	0.0			
1660	57.21	1.5			
1670	57.31	1.0			
1680	58.44	11.3			
1690	62.98	45.4			
1700	67.13	41.5			
1710	69.02	18.9			
1720	70.43	14.1			
1730	70.98	5.5			
1740	71.55	5.7			
1750	72.02	4.7			
1760	72.50	4.8			
1770	72.91	4.1			
1780	73.24	3.3			
1790	73.75	5.1			
1800	74.14	3.9			
1810	74.56	4.2			
1820	74.94	3.8			
1830	75.30	3.6			
1840	75.66	3.6			
1850	75.52	-1.4			
1860	72.73	-27.9			
1870	71.31	-14.2			
1880	75.43	41.2			
1890	77.53	21.0			

TEMPERATURE (°F)



TEMPERATURE PROFILES
NEWBERRY CRATER, OREGO
HOLE NO: N-4

TD = 2024
FEET
BHT = 85.39
DEG F

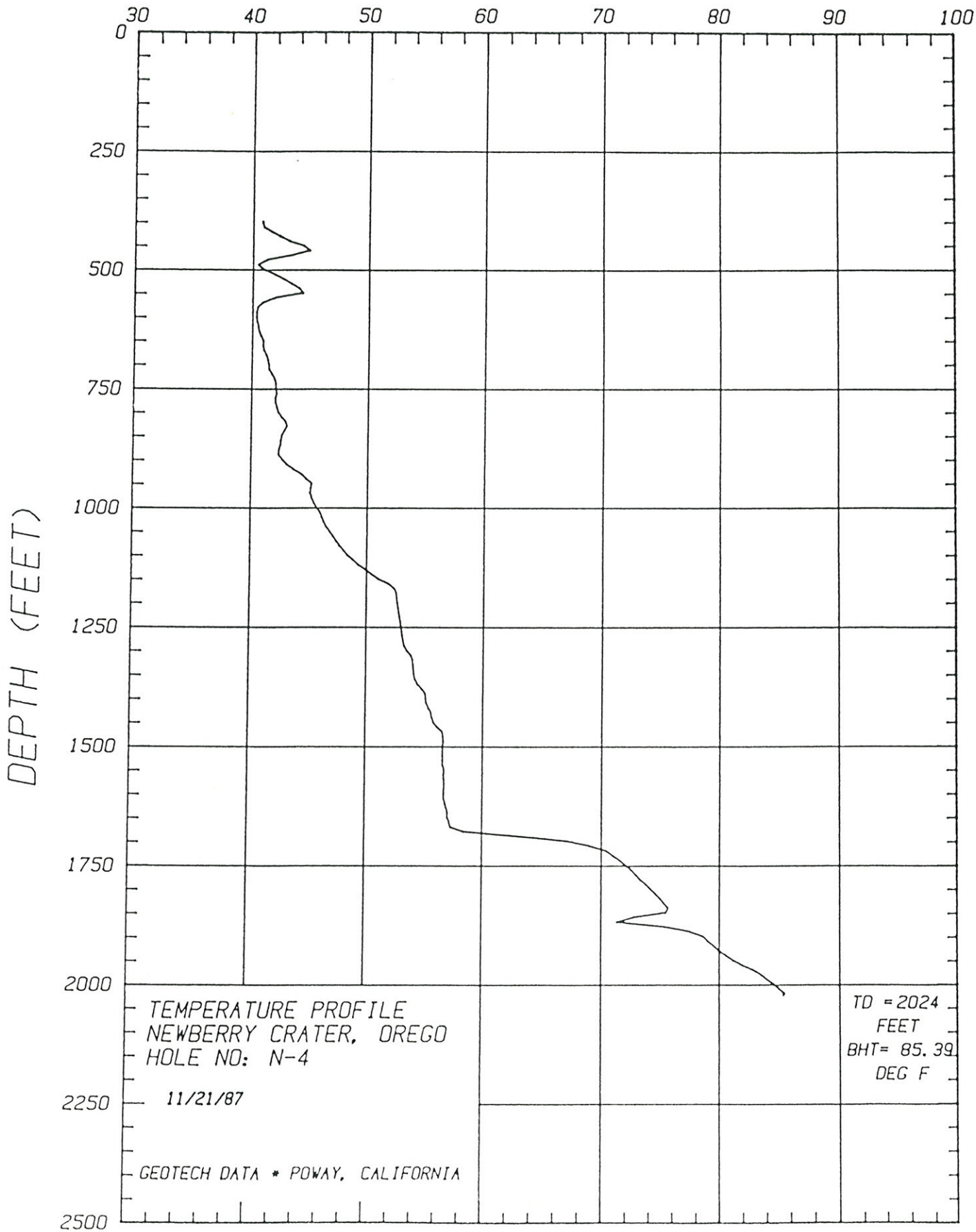
11/21/87 (+)

GEOTECH DATA * POWAY, CALIFORNIA

CONFIDENTIAL

CONFIDENTIAL

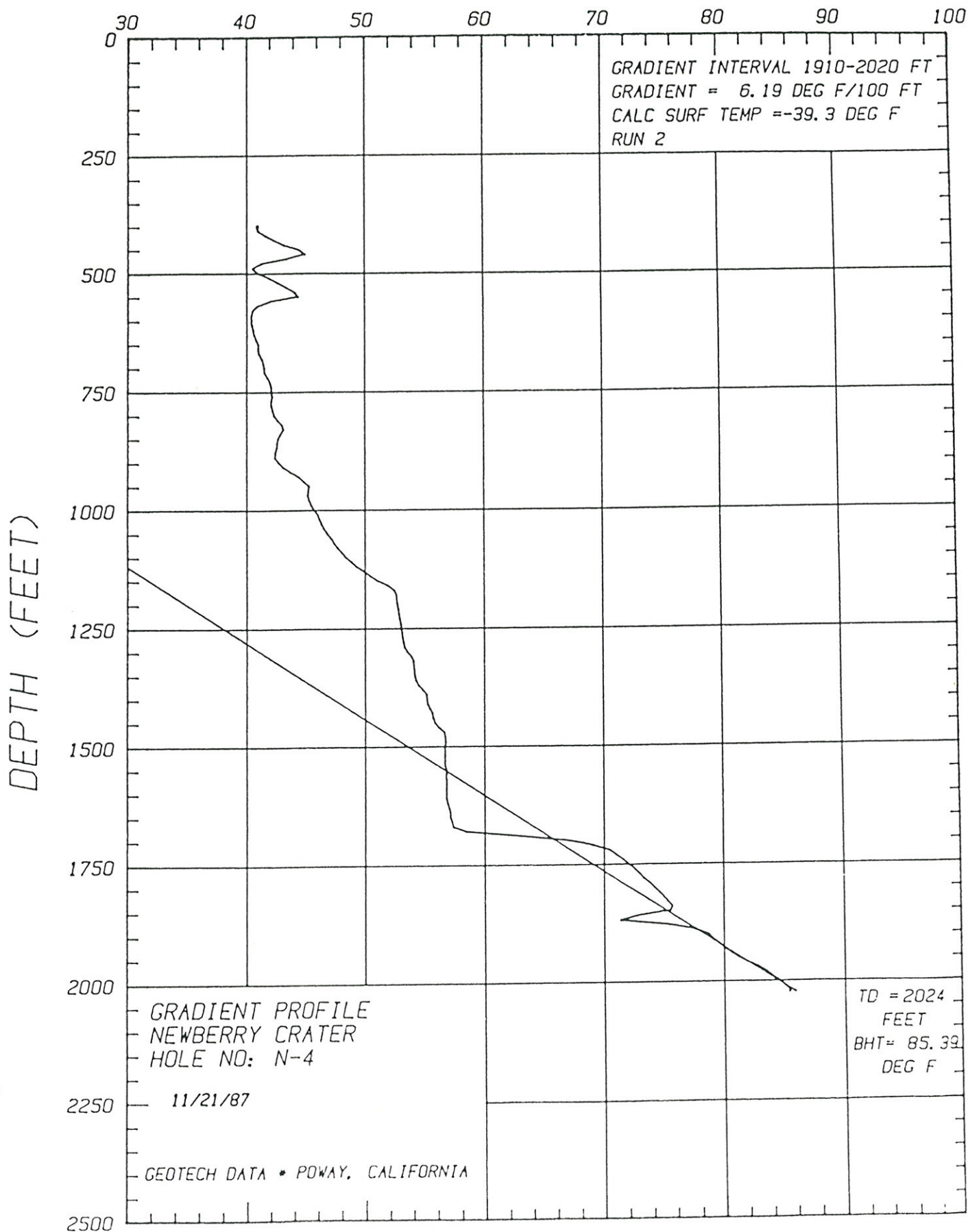
TEMPERATURE (°F)



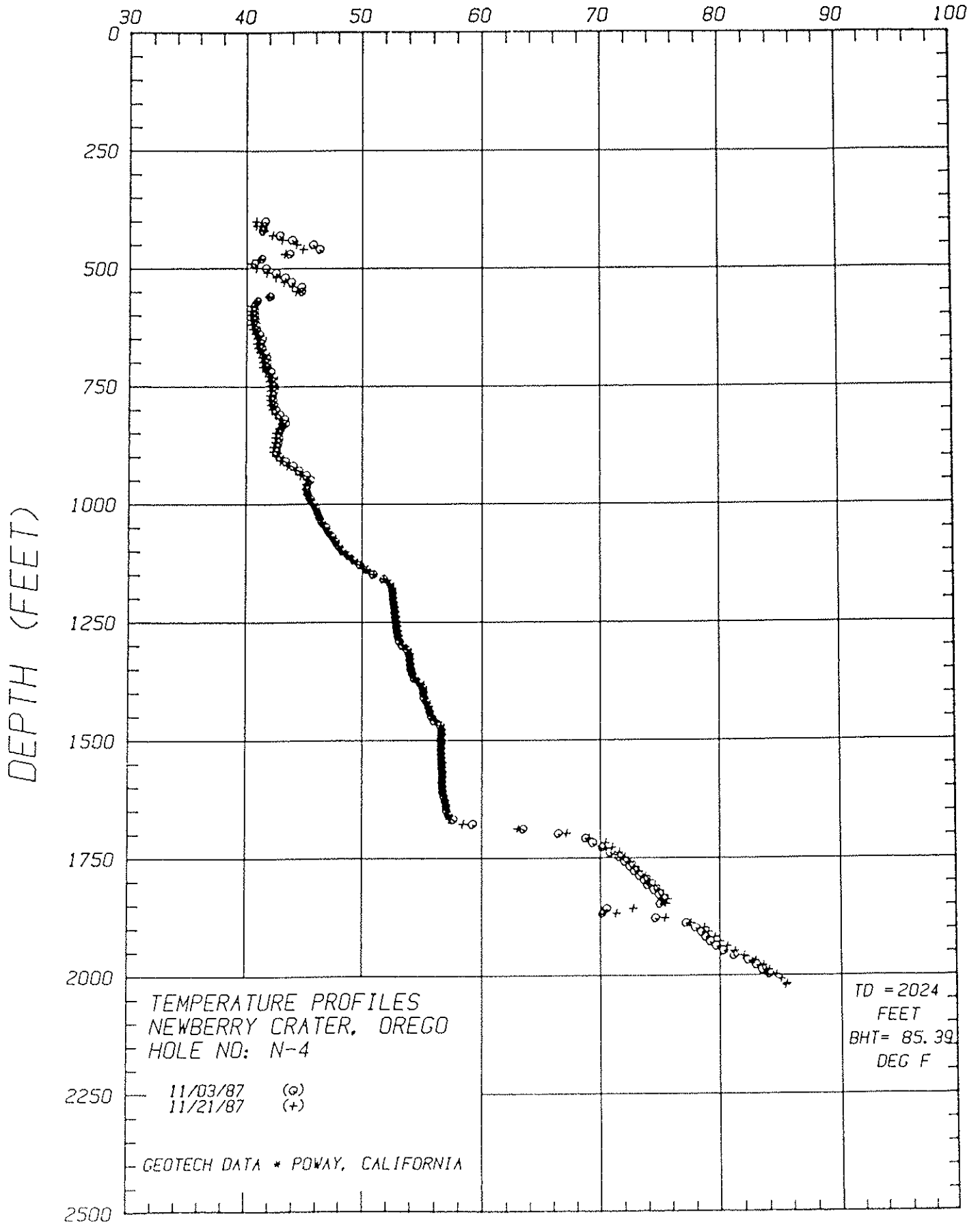
CONFIDENTIAL

CONFIDENTIAL

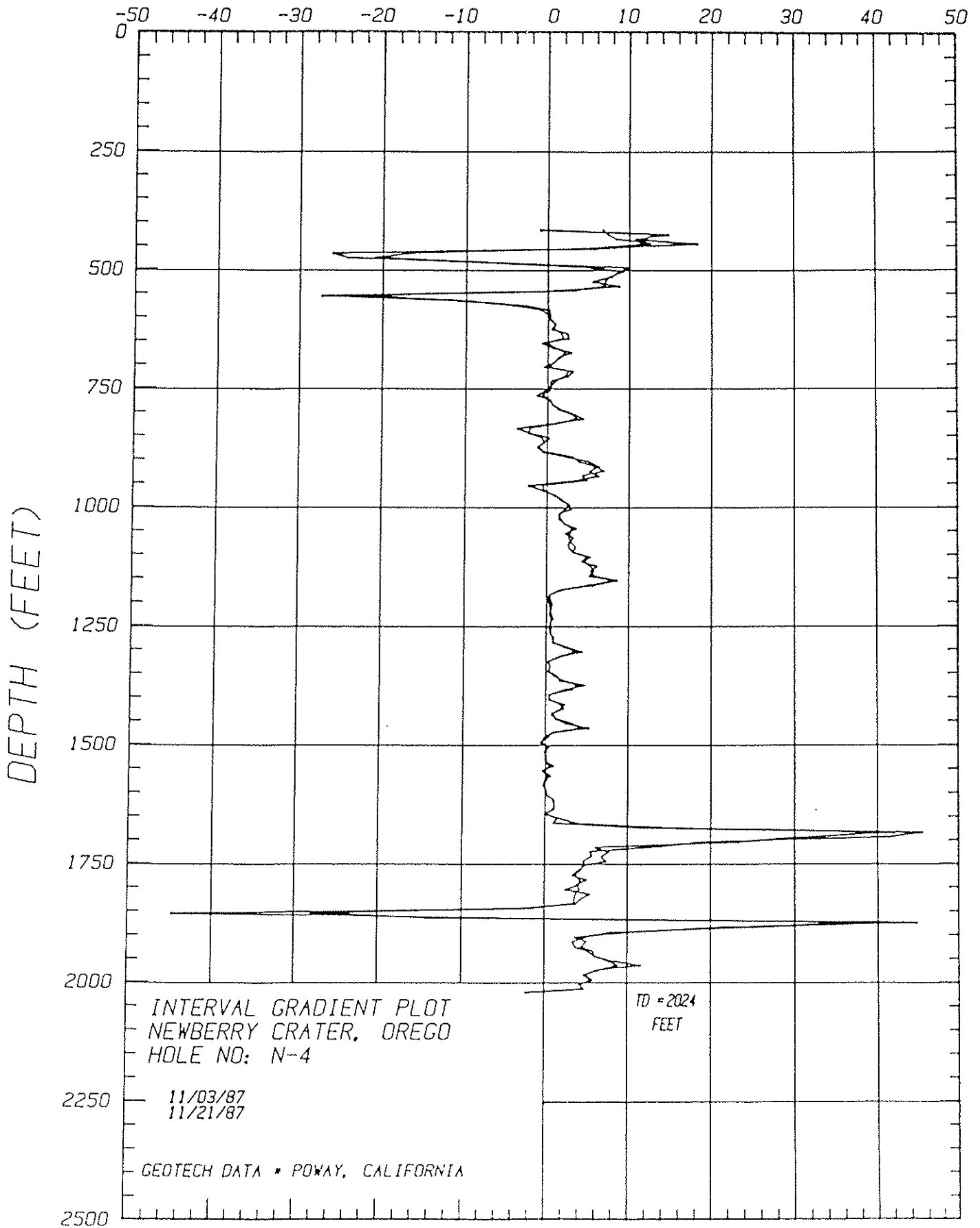
TEMPERATURE (°F)



TEMPERATURE (°F)



GRADIENT (°F/100 FT)



INTERVAL GRADIENT PLOT
NEWBERRY CRATER, OREGO
HOLE NO: N-4

TD = 2024
FEET

11/03/87
11/21/87

GEO TECH DATA * POWAY, CALIFORNIA

TEMPERATURE (°F)

