

CONFIDENTIAL



FILE NO. _____ COMPANY GEO OPERATOR CORP / GNC
 WELL N-5
 FIELD NEBERRY
 COUNTY DESHALES STATE OR.
 LOCATION: 3000' S & 375' W OF NE CORNER OF
 SEC 8 T14P22S R3E12E
 ELEVATIONS
 FERMENT BOTTOM Q. _____ ELEV. 5698'
 DRILLING MEASURED FROM Q. _____ FT. ABOVE P.I.D.
 NO. _____ OF _____
 Q. _____ Q. _____

DRILL DATE 8/25/87
 SERVICE ORDER 14654
 DEPTH-DRILLER 3230'
 DEPTH-LOSSER _____
 BOTTOM LOGGED INTERVAL 2720'
 TOP LOGGED INTERVAL _____
 DRILLING - DRILLER 534' _____
 DRILLING - LOSSER 4' _____

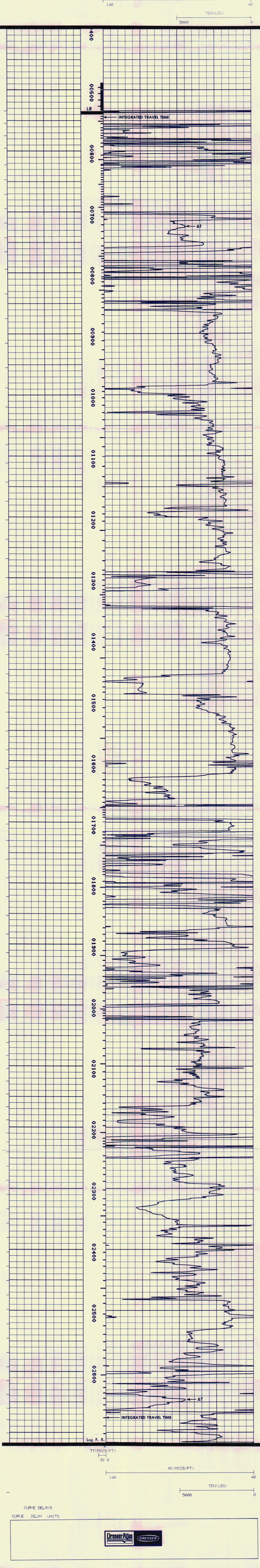
BIT SIZE 3.182"
 TYPE FLUID IN HOLE WATER
 DENSITY / VISCOSITY _____
 PH / FLUID LOSS _____
 SOURCE OF SAMPLE _____
 RH AT MERS. TEMP. _____
 RHF AT MERS. TEMP. _____
 RHC AT MERS. TEMP. _____
 SOURCE OF RHF / RHC _____
 RH AT BIT _____
 TIME SINCE CIRCULATION 41 HRS
 MRS. REC. TEMP. DEG. F 130 148 F
 EQUIP. NO. / LOC. H. 14465 1 SEC
 RECORDED BY B. HELCH
 WITNESSED BY MR. JALNEY

IN MAKING INTERPRETATIONS OF LOGS OUR EMPLOYEES WILL GIVE CUSTOMER THE BEST FIT OF THEIR BEST JUDGMENT, BUT SINCE ALL INTERPRETATIONS ARE OPINIONS BASED ON INSTRUMENTS, WE CANNOT, AND WE DO NOT GUARANTEE THE ACCURACY OR CORRECTNESS OF ANY INTERPRETATION. WE SHALL NOT BE LIABLE FOR RESPONSIBILITY FOR ANY LOSS, COST, DAMAGES, SURVEY EXPENSES OR OTHERS RESULTING FROM ANY INTERPRETATION MADE BY ANY OF OUR EMPLOYEES.

RUN	TRIP	TOOL	SERIAL NO.	SERIES NO.	POSITION
1	1	AC	72872	1605	FREE
1	1	GR			
1	1	CAL			

REMARKS RUN (1)

COMPANY: GEO OPERATOR CORP / GNC RUN: 1
 WELL NAME: N-5 TRIP: 1
 SERVICE: KC204C FILE: 6 DATE: 08/25/87 TIME: 23:02:21
 REVISION: FSYSAL REV D008 VER 1 MODE: RECORD



CURVE DELAYS
 CURVE DELAY UNITS