

WELBY

COMPENSATED DENSITY LOG NEUTRON

COMPANY: AMERICAN GEOTECHNICAL CORP.
 WELL: OLD HAY FLD #1
 FIELD: AGC - GOLD HILL FLD
 COUNTY: CLATSOP STATE: OREGON
 Location: 200' S of W 1/4 Sec 25 Twp 2 S R 8 E
500' N of S 1/4 Sec 16 Twp 2 S R 8 E
 Other Services: WELBY
 Forming Datum: SEA Elev: 2360' Elev: SEA
 Drilling Method: AB Drilling Method from: AB
 Depth - Diller: 4002'
 Depth - Well: 4002'
 Run No.: 8-12-78
 Log No.: 4002
 Date: 8-12-78
 Bit Size: 2 1/8"
 Type Fluid in Hole: Oil
 Spm. - Visc: 350 ml
 Spm. - Fluid Loss: 500 ml
 Source of Sample: 5 ft
 Spm. - Gamma: 5 ft
 Spm. - Neutron: 5 ft
 Source Bl. - Gamma: 5 ft
 Source Bl. - Neutron: 5 ft
 Tube Size - Gamma: 2 1/8" x 2 1/8"
 Tube Size - Neutron: 2 1/8" x 2 1/8"
 Equip. Location: 10250 JOURNAL
 Recorded By: DA. GILLES
 Witnessed By: DA. GILLES

| EQUIPMENT DATA | | | | GAMMA DENSITY | | | |
|----------------------|--------------|----------------------|--------------|------------------|--------------------|------------------|--------------------|
| Run No. | <u>01E</u> | Run No. | <u>01E</u> | Log Type | <u>COMP. DENS.</u> | Log Type | <u>COMP. DENS.</u> |
| Tool Model No. | <u>102-A</u> | Tool Model No. | <u>125</u> | Diameter | <u>2 5/8"</u> | Diameter | <u>2 5/8"</u> |
| Detector Model No. | <u>102-A</u> | Detector Model No. | <u>127</u> | Type | <u>SCINT.</u> | Type | <u>SCINT.</u> |
| Length | <u>N/A</u> | Length | <u>N/A</u> | Source Model No. | <u>D-2</u> | Source Model No. | <u>D-2</u> |
| Distance to Source | <u>240</u> | Distance to Source | <u>240</u> | Seal No. | <u>N/A</u> | Seal No. | <u>N/A</u> |
| Hoist Truck No. | <u>9478</u> | Hoist Truck No. | <u>9478</u> | CS | <u>137</u> | CS | <u>137</u> |
| Instrument Truck No. | <u>2008</u> | Instrument Truck No. | <u>2008</u> | Strength | <u>500 mc</u> | Strength | <u>500 mc</u> |
| Tool Serial No. | <u>10250</u> | Tool Serial No. | <u>10250</u> | | | | |

| GENERAL | | | | GAMMA LOG DATA | | | | GAMMA DENSITY | | | | | |
|-----------------------|----------|-----------------------|----------|------------------|--------------|------------------|--------------|------------------|--------------------|------------------|--------------------|------------------|---------------------|
| Run No. | <u>1</u> | Run No. | <u>1</u> | From | <u>0</u> | To | <u>163</u> | Depth | <u>0</u> | Depth | <u>163</u> | Units | <u>per Log Div.</u> |
| Reference Literature: | | Reference Literature: | | Calibrator No. | <u>10088</u> | Calibrator No. | <u>10088</u> | Calibrator Value | <u>1.89 - 2.05</u> | Calibrator Value | <u>1.89 - 2.05</u> | Date calibrated: | |
| RIG TIME: | | RIG TIME: | | Date calibrated: | | Date calibrated: | | | | | | | |

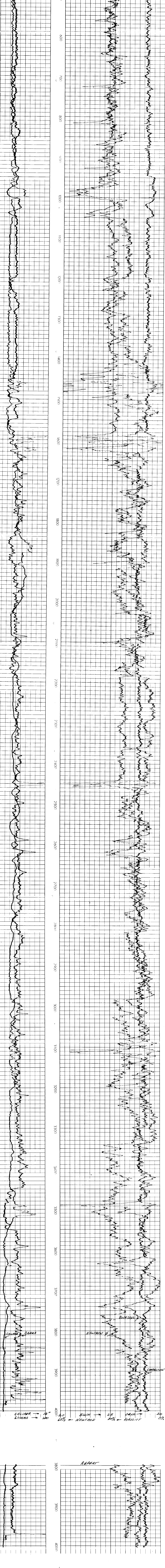
Service Ticket No. 00887 Remarks:

WELBY does not guarantee the recovery of any interpretation of log data, conversion of log data to physical rock parameters, or recommendations which may be given by WELBY personnel or which may appear on the log or in any other form. Any use of such data, interpretations, parameters, or recommendations requires the user to be responsible, except where due to gross negligence or willful misconduct, for any loss, damage, or expense resulting from the use thereof.

-100'

| | | |
|--|--|-----------------------------|
| CALIPER Average Diameter in. | COMPENSATED GAMMA DENSITY GMS/CC | CORRECTION GMS/CC |
| GAMMA API Gamma Ray Units | P _f = 1.0 POROSITY AT P _f 2.65 G/CC | 2.5 -25 0 +25 |

DENSITY-POROSITY %
 POROSITY % SAND-STONE



CALIPER → 16"
 GAMMA → 20"
 BLANK → 215
 NEUTRON → 20%
 DENS → 210
 POROSITY → 20%