



FRACTURE FINDER MICRO-SEISMOGRAM LOG

COMPANY ORE-IDA FOODS INC.
WELL ORE-IDA NO. 1
FIELD ONTARIO State OREG.
County MALHEUR Location NORTHEAST QUARTER CORNER
State OREGON
County MALHEUR State OREGON
Location NORTHEAST QUARTER CORNER

COMPANY ORE-IDA FOODS INC.
WELL ORE-IDA NO. 1
FIELD ONTARIO State OREG.
County MALHEUR Location NORTHEAST QUARTER CORNER
State OREGON
County MALHEUR State OREGON
Location NORTHEAST QUARTER CORNER

Formal Datum: GL
Lith Measured From: KB
Drilling Measured From: KB
Date: 10-1-79
Furn No.: W0
Depth-Diller: 7960
Depth-Whiter: 7928
Etm Log Ulter: 7922
Top Log Ulter: 925
Casing-Whiter: 925
Casing-Wmax: 925
Bit Size: 12 1/4
Type fluid in Hole: LIGNO SULF

Dens. Visc: 8.2 142
pH: 11.6 15.0
Sp. Grav: 1.34 @ 6.6 F
R. @ Mass Temp: 1.10 @ 6.8 F
R. @ Mass Temp: 1.64 @ 6.4 F
Source R. H.: MISJURED
R. @ BHT: 0.33 @ 235 F
Time Since Circ: 100 1/4 HOURS
Max Rec. Temp: 5.86 F (WDJND)
Sounded by: DIVE
Witnessed By: FARNIER, HATTAVAY

SCALE CHANGES			
Depth	Scale Up Hole	Scale Down Hole	

EQUIPMENT DATA			
Run No.	Tool Type and No.	Pad Type	Tool Position
TW0	AVL 23958		CENT.

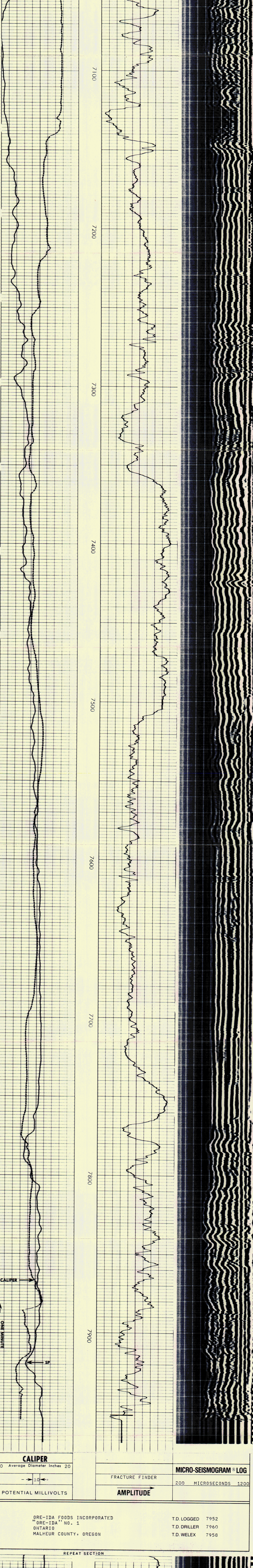
Change in Mud Type or Additional Samples			
Date	Sample No.	Type Log	Depth

Source of Sample			
R. @ Meas. Temp.	R. @ Meas. Temp.	R. @ Meas. Temp.	Source R. H.

DUO DIAL CALIBRATION SETTING 2.88.
FF/MSG ON BOTTOM @ 5:30 AM 10-1-79.

WELX does not guarantee the accuracy of any interpretation of log data, conversion of log data to physical rock parameters, or recommendations which may be given by Welx personnel or which may appear on the log or in any other form. Any user of such data, interpretations, conversions, or recommendations agrees that Welx is not responsible, except where due to gross negligence or willful misconduct, for any loss, damages, or expenses resulting from the use thereof.

POTENTIAL MILLIVOLTS
→ 10 ←
CALIPER
10 Average Diameter Inches 20



POTENTIAL MILLIVOLTS
→ 10 ←
CALIPER
10 Average Diameter Inches 20

FRACTURE FINDER
AMPLITUDE
MICRO-SEISMOGRAM LOG
200 MICROSECONDS 1200

ORE-IDA FOODS INCORPORATED
ORE-IDA NO. 1
ONTARIO
MALHEUR COUNTY, OREGON

T.D. LOGGED 7952
T.D. DRILLER 7960
T.D. WELX 7958

REPEAT SECTION

