

FIGURE 1

FLOW TEST DATA - 11/02/93
 PUEBLO VALLEY WELL 66-22A
 ANADARKO PETROLEUM COMPANY

TIME	WATER FLOW *(GPM)	FWHP (PSIG)	FWHT (DEG F)	FDHP (PSIA)	FDHT (DEG F)	DELTA P (PSI)
10:15 AM		45	270	932.0	322.7	0.2
	276	45	270	931.5	316.7	0.7
	317	58	295	930.7	316.7	1.5
	296	60	295	929.8	316.7	2.4
11:15 AM	276	60	295	928.9	316.6	3.3
	276	60	296	928.0	316.6	4.2
	268	60	296	927.2	316.6	5.0
	257	61	296	926.4	316.6	5.8
12:15 PM	257	61	297	925.5	316.6	6.7
	257	61	298	924.9	316.6	7.3
	257	61	298	924.2	316.5	8.0
	257	61	298	923.9	316.5	8.3
1:15 PM	250	61	298	923.6	316.5	8.6
	257	61	294	923.4	316.5	8.8
	250	62	295	923.4	316.5	8.8
	268	62	296	923.5	316.4	8.7
2:15 PM	257	62	296	923.7	316.4	8.5

Notes:

* Measured with wier, final data point confirmed with tank gauge

DOWNHOLE MEASUREMENTS MADE @ 2100'
 STATIC PRESSURE = 932.2 PSIA
 STATIC TEMPERATURE = 323 deg F

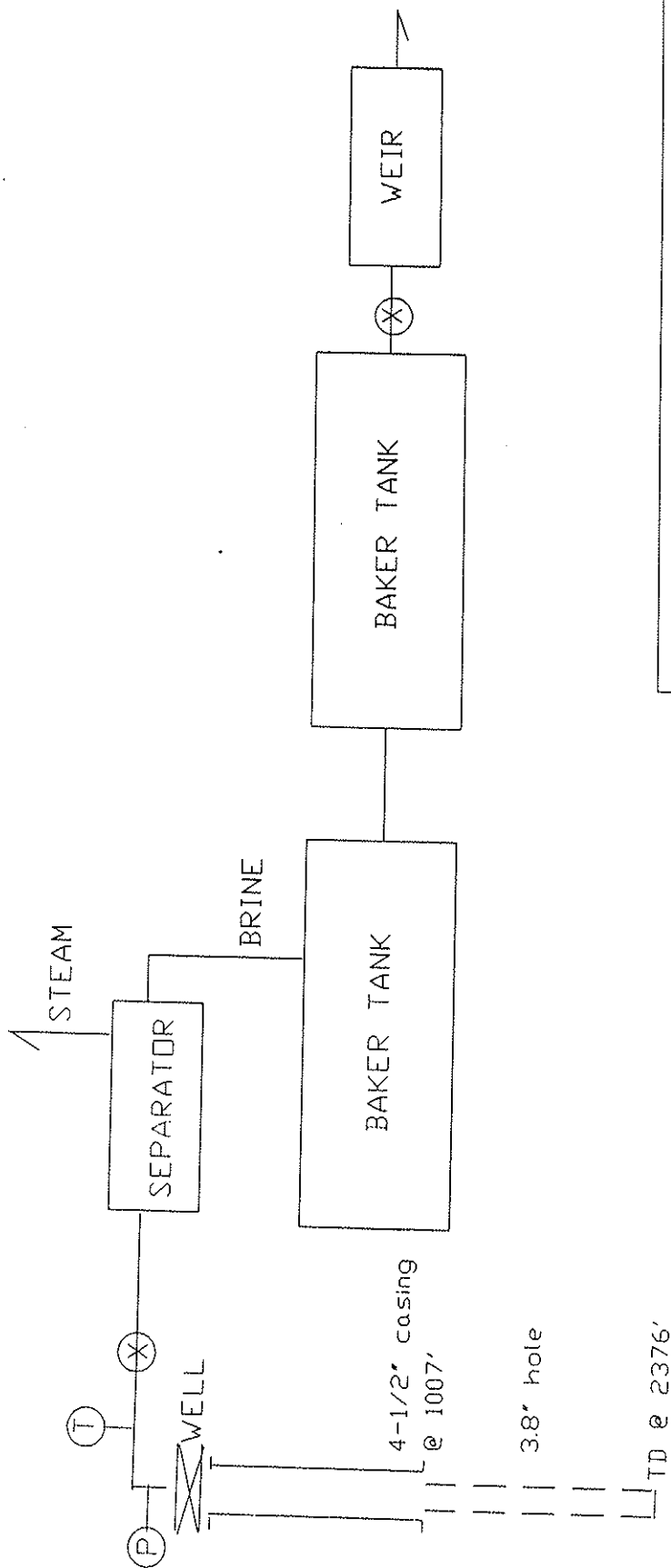


FIGURE 2
 FLOW TEST SCHEMATIC
 PUEBLO VALLEY 66-22A
 ANADARKO PETROLEUM COMPANY
 11/02/93

NOTE: P & T instruments
 in hole @ 2100'

FIGURE 3
STATIC TEMPERATURE SURVEY

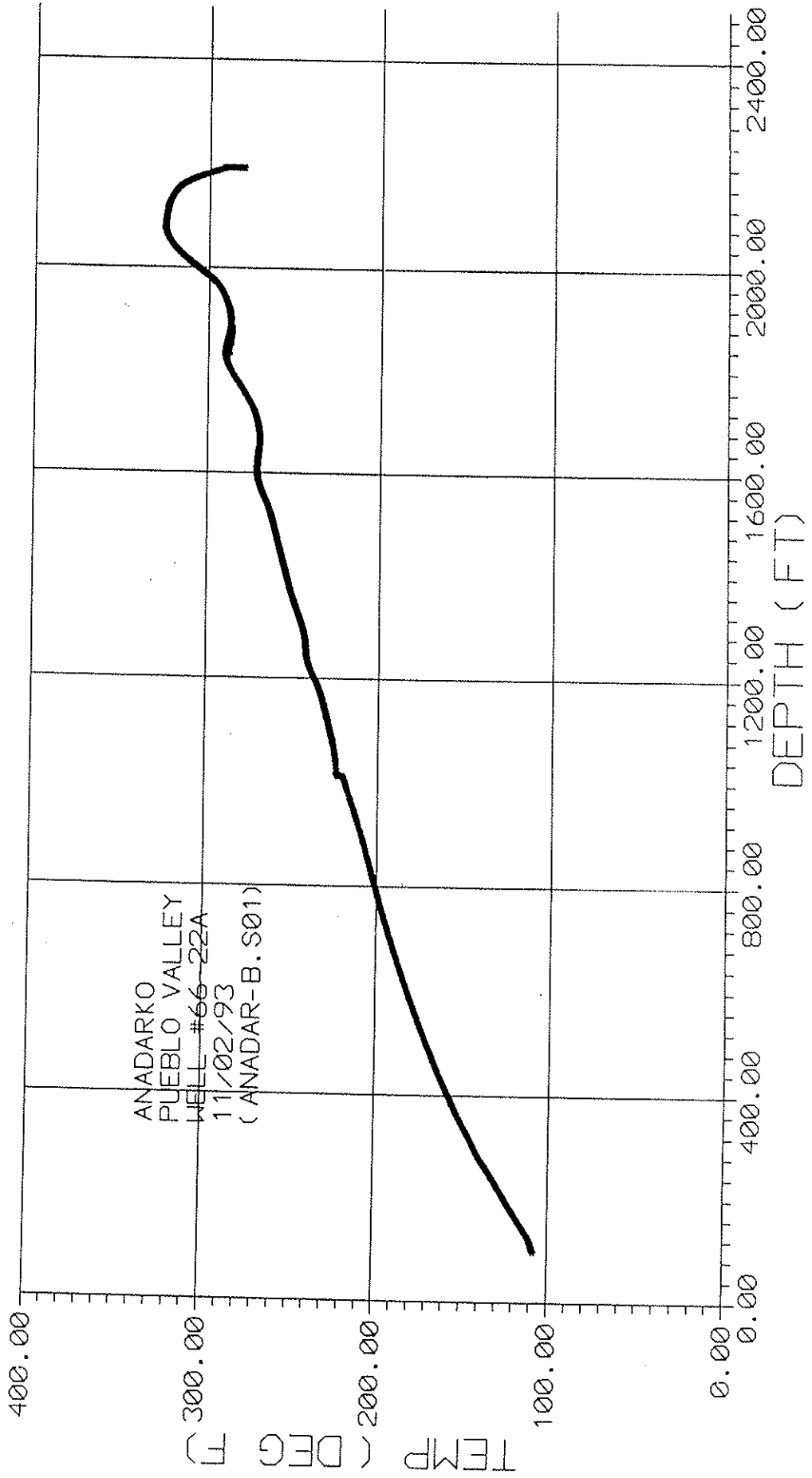


FIGURE 4

STATIC PRESSURE SURVEY

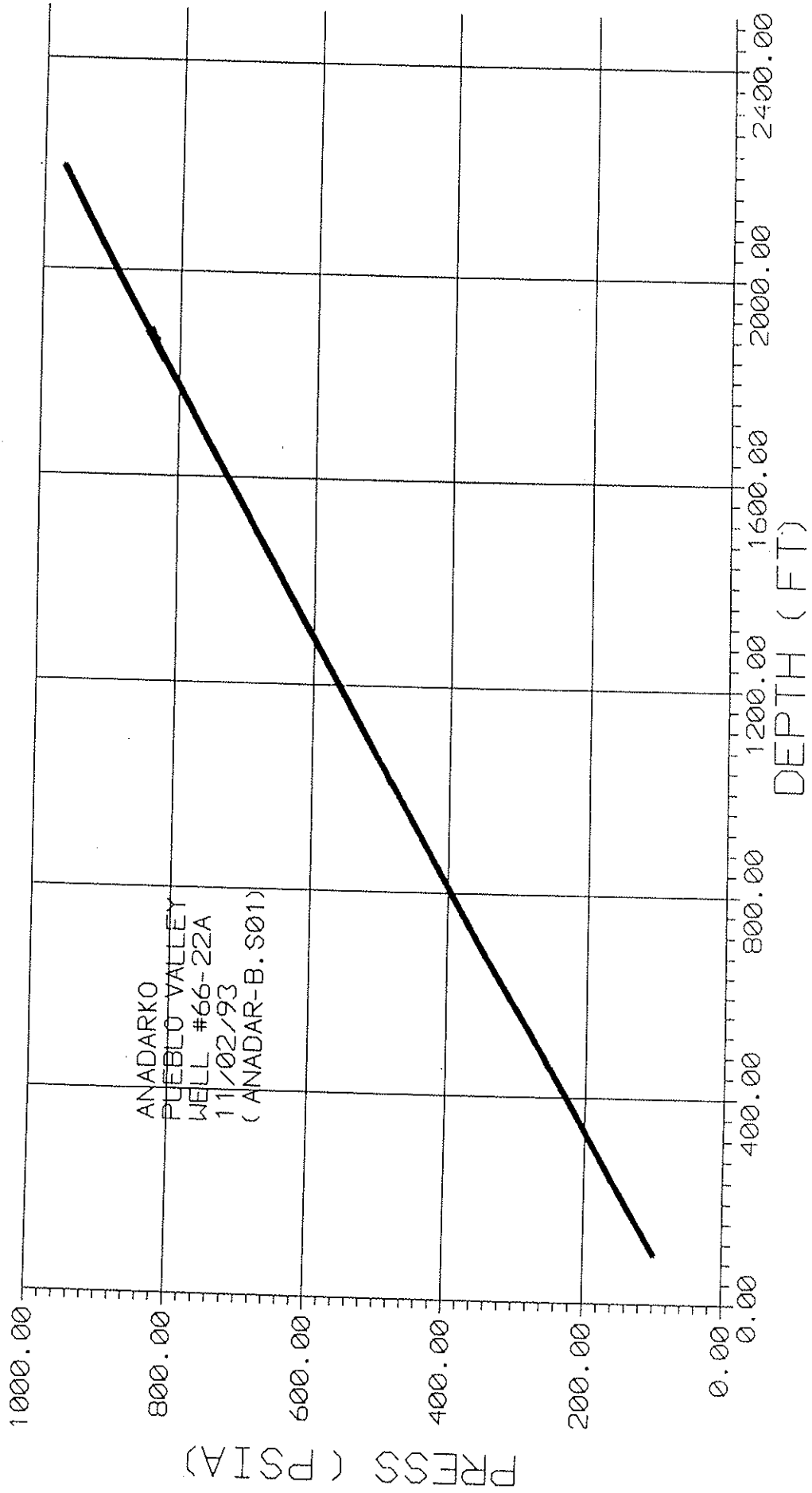


FIGURE 5

WELL TEST DATA

PUEBLO VALLEY 66-22A

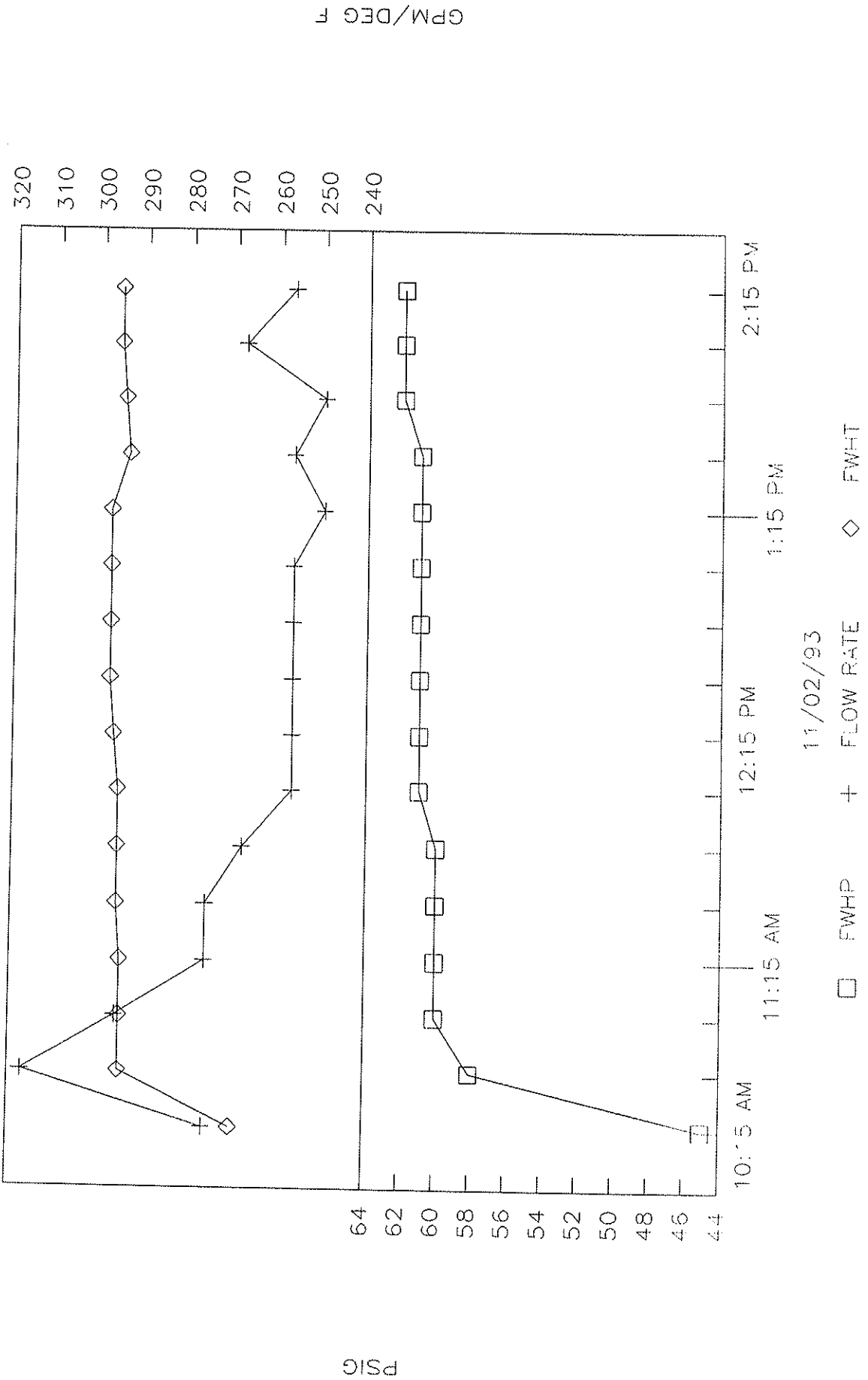


FIGURE 6

FLOWING DOWNHOLE PRESSURE

PUEBLO VALLEY 66-22A

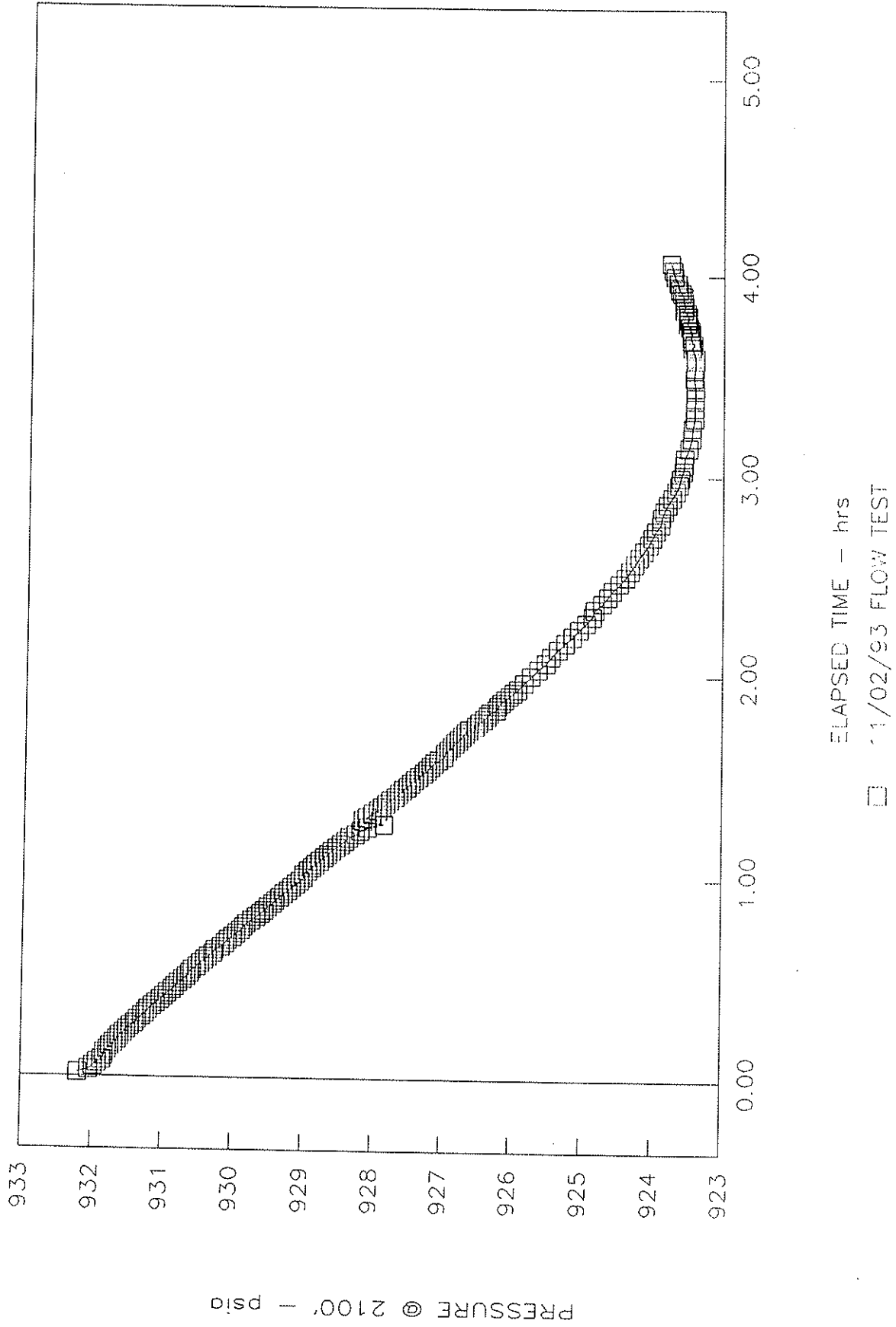


FIGURE 7

PRESSURE BUILDUP DATA

PUEBLO VALLEY 66-22A

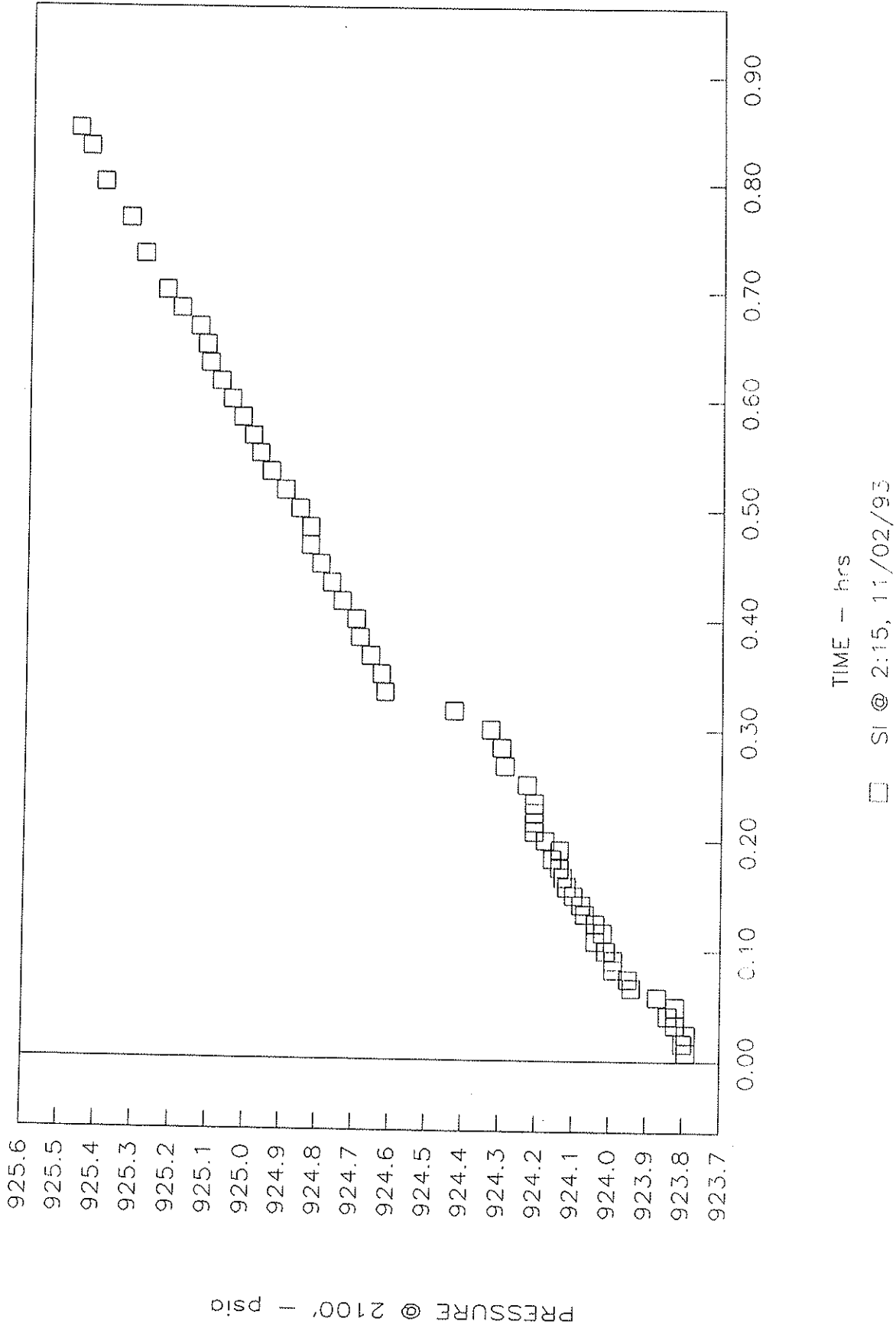


FIGURE 8

WELL CLEANOUT DRAWDOWN AND BUILDUP

PUEBLO VALLEY 66-22A

