

COMPANY: NAHAMA AND WEAGANT ENERGY CO.
 WELL: "BEAVER CREEK" #31-34-75
 FIELD: MIST
 COUNTY: COLUMBIA
 STATE: OREGON
 LOCATION: 875' E & 856' W FROM
 "BEAVER CREEK" #31-34-75
 DATE: 28 JUN 92
 TIME: 10:01 AM
 LOG MEASURED FROM: KI
 LOG MEASURED TO: KI
 PERMANENT DATUM: NAD 83
 DATUM CORRECTION: 0.00
 ELEVATION: 1027.01
 ABOVE BENCH DATUM: 0.00
 ELEVATION: 1027.01
 D.L. 1027.01 F
 D.L. 1027.01 F

The well name, location and borehole reference data were furnished by the customer.

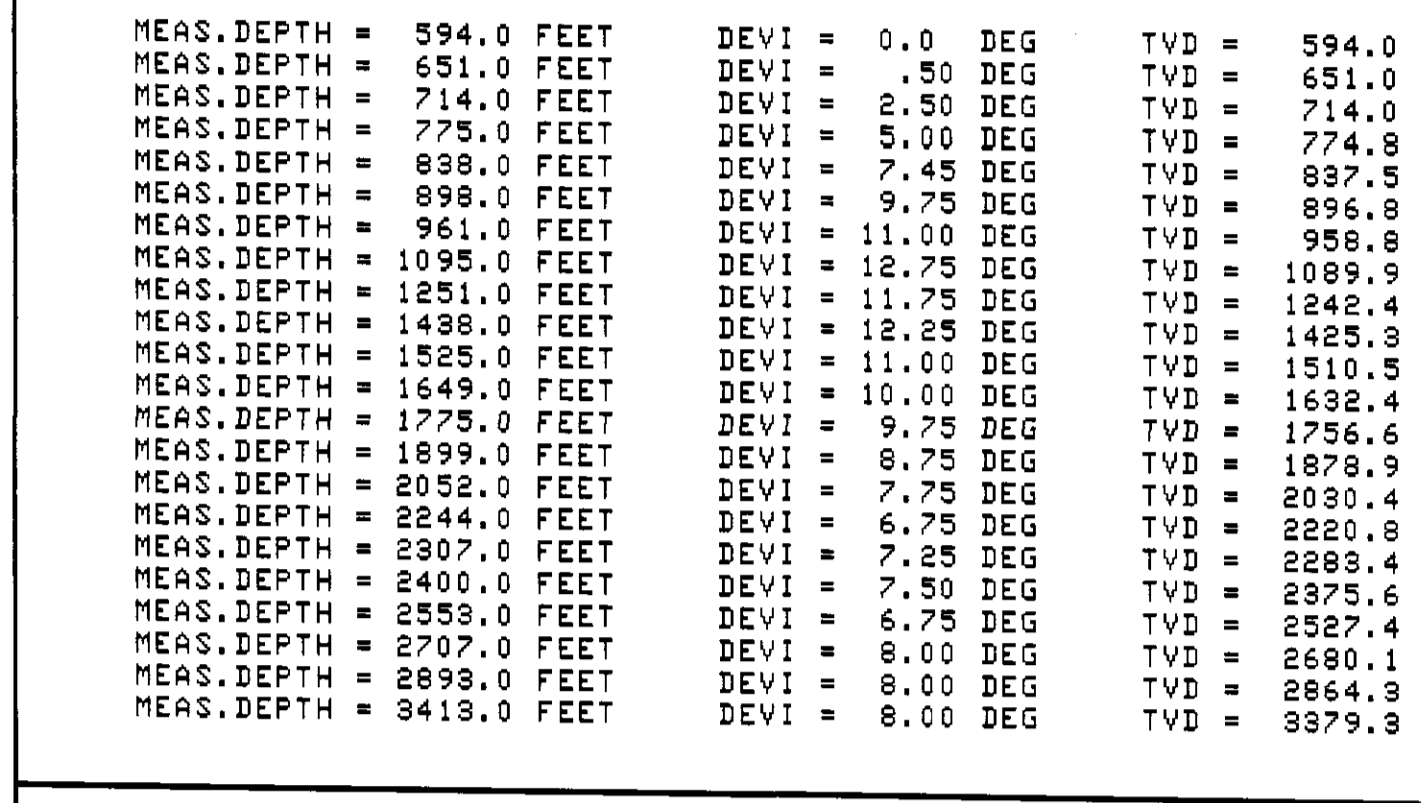
All interpretations are opinions based on inferences from electrical or other measurements and we cannot, and do not, guarantee the accuracy or correctness of any interpretations, and we shall not, except in the case of gross or willful negligence or our part, be liable or responsible for any loss, costs, damages or expenses incurred or sustained by anyone resulting from any interpretations made by any of our officers, agents or employees. These interpretations are also subject to Clause 4 of our General Terms and Conditions as set out in our current Price Schedule.

Run No.	ONE
Service Order No.	886082
Drilling Fluid Level	3000 PPM
Rmt @ BHT	3263 C-MMM
Rmc @ BHT	3227 C-MMM
Logging Speed	3000 C/F/HR

EQUIPMENT DATA

Tool Number 1	DIS-EC 288
Tool Number 2	DIC-DA 078
Tool Number 3	MCD-B 9C
Tool Number 4	SLS-WA 78
Tool Number 5	SLS-MA 88
Tool Number 6	SG-E 887
Tool Number 7	
Tool Number 8	
Tool Number 9	
Tool Number 10	
Tool Number 11	
Tool Number 12	

REMARKS:
 TWO 15' STANDOFFS RUN ON DUAL INDUCTION TOOL
 TWO CEMIZ CENTRALIZERS RUN ON SONIC SONDE
 MAX DEVIATION = 12.75 DEG
 REPEAT DONE FROM 3200' TO 3000' DUE TO HOLE CONDITIONS
 SP RUN ON -150 C DUE TO HIGH ACTIVITY
 OF SP BELOW BASALT



TOTAL TOOL STRING LENGTH IS 66.6 F.
 TOTAL TOOL STRING HEIGHT IS 95.7 LB IN AIR.

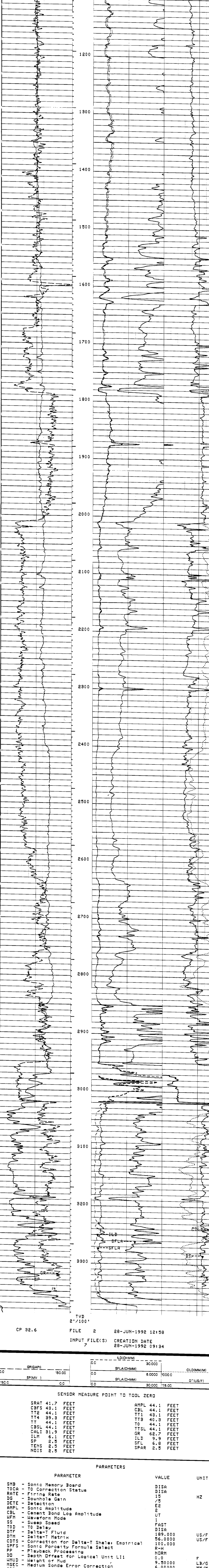
INCLINOMETRY LIST

TIE DEPTH	MEAS. DEPTH = 594.0 FEET	DEVI = 0.0 DEG	TVD = 594.0 FEET
	MEAS. DEPTH = 594.0 FEET	DEVI = 0.0 DEG	TVD = 594.0 FEET
	MEAS. DEPTH = 651.0 FEET	DEVI = 0.50 DEG	TVD = 651.0 FEET
	MEAS. DEPTH = 714.0 FEET	DEVI = 2.50 DEG	TVD = 714.0 FEET
	MEAS. DEPTH = 775.0 FEET	DEVI = 5.00 DEG	TVD = 774.8 FEET
	MEAS. DEPTH = 838.0 FEET	DEVI = 7.45 DEG	TVD = 837.5 FEET
	MEAS. DEPTH = 899.0 FEET	DEVI = 9.75 DEG	TVD = 896.8 FEET
	MEAS. DEPTH = 961.0 FEET	DEVI = 11.00 DEG	TVD = 956.8 FEET
	MEAS. DEPTH = 1021.0 FEET	DEVI = 11.75 DEG	TVD = 1018.9 FEET
	MEAS. DEPTH = 1091.0 FEET	DEVI = 12.75 DEG	TVD = 1082.4 FEET
	MEAS. DEPTH = 1251.0 FEET	DEVI = 12.25 DEG	TVD = 1242.4 FEET
	MEAS. DEPTH = 1438.0 FEET	DEVI = 11.00 DEG	TVD = 1425.5 FEET
	MEAS. DEPTH = 1525.0 FEET	DEVI = 10.00 DEG	TVD = 1510.5 FEET
	MEAS. DEPTH = 1649.0 FEET	DEVI = 9.75 DEG	TVD = 1632.4 FEET
	MEAS. DEPTH = 1775.0 FEET	DEVI = 8.75 DEG	TVD = 1758.9 FEET
	MEAS. DEPTH = 1899.0 FEET	DEVI = 7.75 DEG	TVD = 1878.9 FEET
	MEAS. DEPTH = 2022.0 FEET	DEVI = 7.25 DEG	TVD = 2030.4 FEET
	MEAS. DEPTH = 2244.0 FEET	DEVI = 6.75 DEG	TVD = 2220.8 FEET
	MEAS. DEPTH = 2307.0 FEET	DEVI = 7.50 DEG	TVD = 2293.4 FEET
	MEAS. DEPTH = 2400.0 FEET	DEVI = 7.50 DEG	TVD = 2375.6 FEET
	MEAS. DEPTH = 2559.0 FEET	DEVI = 6.75 DEG	TVD = 2527.7 FEET
	MEAS. DEPTH = 2707.0 FEET	DEVI = 8.00 DEG	TVD = 2680.1 FEET
	MEAS. DEPTH = 2899.0 FEET	DEVI = 8.00 DEG	TVD = 2864.3 FEET
	MEAS. DEPTH = 3413.0 FEET	DEVI = 8.00 DEG	TVD = 3379.3 FEET

CP 32.6 FILE 2 28-JUN-1992 13:07

MAIN TVD LOG

CP 32.6 FILE 2 28-JUN-1992 13:05
 INPUT FILE(S) CREATION DATE 28-JUN-1992 09:34



CP 32.6 FILE 2 28-JUN-1992 12:58
 INPUT FILE(S) CREATION DATE 28-JUN-1992 09:34

SENSOR MEASURE POINT TO TOOL ZERO

SRAT	41.7 FEET	AMPL	44.1 FEET
CBFS	43.1 FEET	DISA	44.1 FEET
TT2	44.1 FEET	TT1	43.1 FEET
TT4	39.3 FEET	TT3	40.3 FEET
CBSL	44.1 FEET	TO	44.1 FEET
CALLI	31.9 FEET	TTSL	44.1 FEET
SP	2.5 FEET	GR	62.7 FEET
ILM	6.1 FEET	ILD	9.9 FEET
SP	2.5 FEET	SFL	6.0 FEET
NOIS	2.5 FEET	SPAR	2.5 FEET

PARAMETERS

PARAMETER	VALUE	UNIT
SMB	-	Sonic Memory Board
TOCA	-	TO Correction Status
RATE	15	HZ
DG	25	HZ
DETE	2	HZ
AMPL	1	FAST
CB	189	DISA
CBFL	56.0000	US/F
HFM	100.0000	US/F
SS	R-H	
TOD	0.0	F
DTM	9.500000	LB/G
FMH	1.000000	MM/M
MSEC	56.0000	MM/M
SBR	4.500000	IN
DSEC	4.500000	IN
FCD	4.500000	IN
NCUT	GSRY	
FMH	SPHI	
DUCO	512	
BSIN	5	US
DEL	200	US
SPVD	0.0	F
SINT	10.0000	IN
BS	7.87500	IN
BHS	OPEN	