

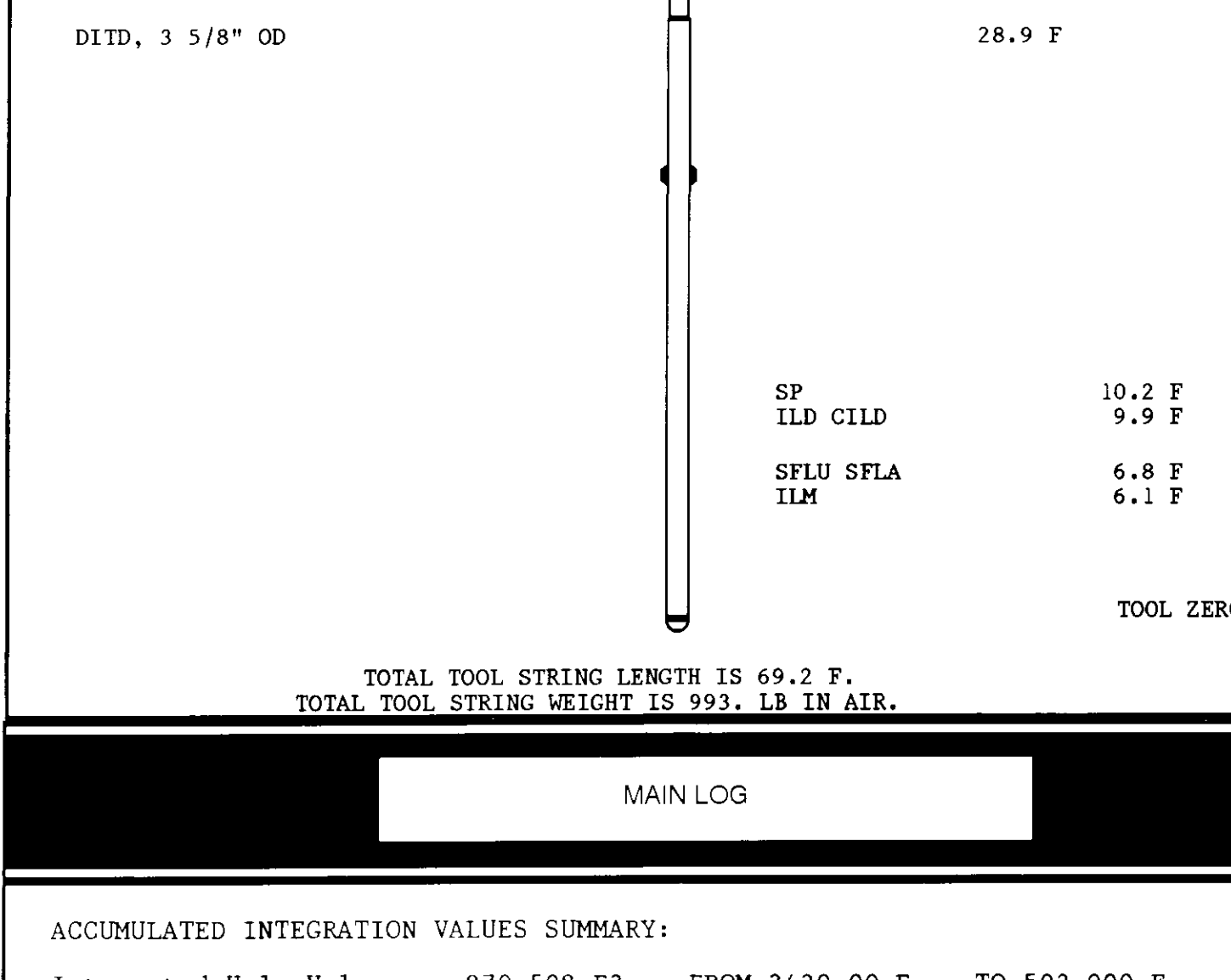
COMPANY NAHAMA & WEAGANT ENERGY CO.
WELL BEAVER CREEK 31-34-75 RD#1
FIELD MIST
COUNTY COLUMBIA
STATE OREGON

LOCATION FROM N 1/4 COR BEAVER CREEK 31-34-75 RD#1
WELL BEAVER CREEK 31-34-75 RD#1
COMPANY NAHAMA & WEAGANT ENERGY CO.
APR SERIAL NO. 35-000-00282
Q1 11.0 F
Q2 11.0 F
Q3 11.0 F
Q4 11.0 F
Q5 11.0 F
Q6 11.0 F
Q7 11.0 F
Q8 11.0 F
Q9 11.0 F
Q10 11.0 F
Q11 11.0 F
Q12 11.0 F
Q13 11.0 F
Q14 11.0 F
Q15 11.0 F
Q16 11.0 F
Q17 11.0 F
Q18 11.0 F
Q19 11.0 F
Q20 11.0 F
Q21 11.0 F
Q22 11.0 F
Q23 11.0 F
Q24 11.0 F
Q25 11.0 F
Q26 11.0 F
Q27 11.0 F
Q28 11.0 F
Q29 11.0 F
Q30 11.0 F
Q31 11.0 F
Q32 11.0 F
Q33 11.0 F
Q34 11.0 F
Q35 11.0 F
Q36 11.0 F
Q37 11.0 F
Q38 11.0 F
Q39 11.0 F
Q40 11.0 F
Q41 11.0 F
Q42 11.0 F
Q43 11.0 F
Q44 11.0 F
Q45 11.0 F
Q46 11.0 F
Q47 11.0 F
Q48 11.0 F
Q49 11.0 F
Q50 11.0 F
Q51 11.0 F
Q52 11.0 F
Q53 11.0 F
Q54 11.0 F
Q55 11.0 F
Q56 11.0 F
Q57 11.0 F
Q58 11.0 F
Q59 11.0 F
Q60 11.0 F
Q61 11.0 F
Q62 11.0 F
Q63 11.0 F
Q64 11.0 F
Q65 11.0 F
Q66 11.0 F
Q67 11.0 F
Q68 11.0 F
Q69 11.0 F
Q70 11.0 F
Q71 11.0 F
Q72 11.0 F
Q73 11.0 F
Q74 11.0 F
Q75 11.0 F
Q76 11.0 F
Q77 11.0 F
Q78 11.0 F
Q79 11.0 F
Q80 11.0 F
Q81 11.0 F
Q82 11.0 F
Q83 11.0 F
Q84 11.0 F
Q85 11.0 F
Q86 11.0 F
Q87 11.0 F
Q88 11.0 F
Q89 11.0 F
Q90 11.0 F
Q91 11.0 F
Q92 11.0 F
Q93 11.0 F
Q94 11.0 F
Q95 11.0 F
Q96 11.0 F
Q97 11.0 F
Q98 11.0 F
Q99 11.0 F
Q100 11.0 F

Run No. ONE
Service Order No. 524484
Drilling Fluid Level 300.0 PPM
Salinity 1757.0 OHMM @ 83.0 DEGF
Rmf @ BHT 1848.0 OHMM @ 83.0 DEGF
Logging Speed 3600.0 F/HR

EQUIPMENT DATA

Tool Number 1	DJS-EC 1342
Tool Number 2	DIC-DA 1366
Tool Number 3	MCD-DA 668
Tool Number 4	SLS-MA 88
Tool Number 5	SLS-WC 1335
Tool Number 6	SGC-JC 3206
Tool Number 7	EM-BO 885
Tool Number 8	SLS-DA 1329
Tool Number 9	NLV-BC 418
Tool Number 10	
Tool Number 11	
Tool Number 12	



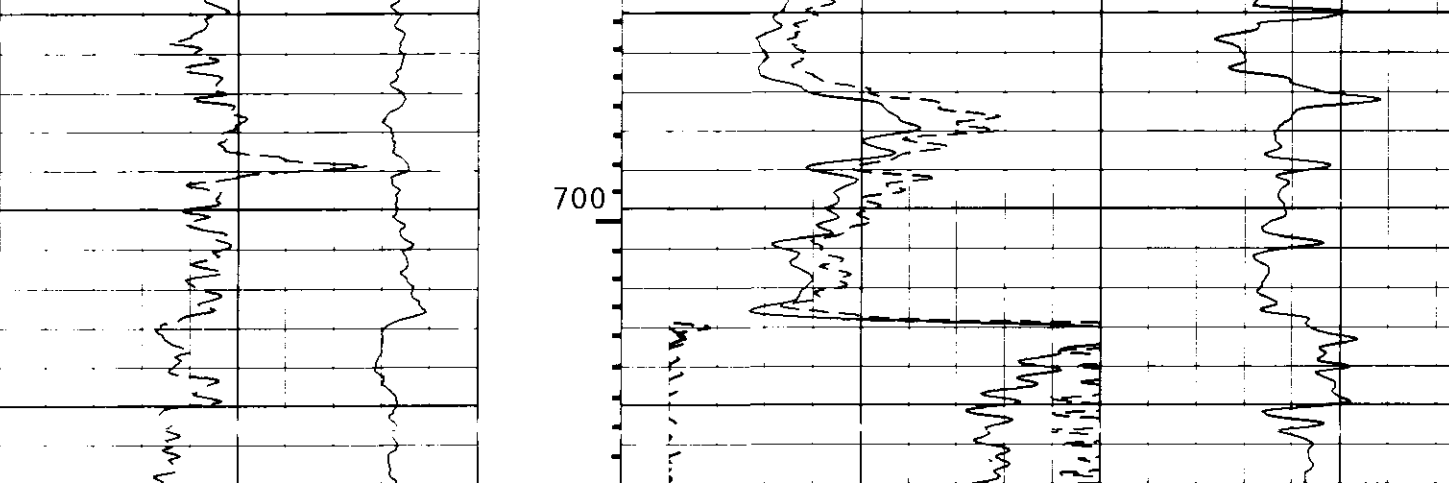
MAIN LOG

ACCUMULATED INTEGRATION VALUES SUMMARY:

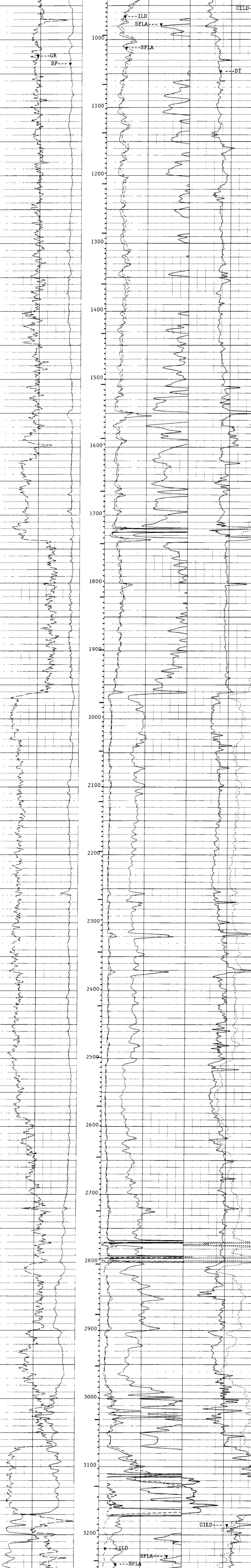
Integrated Hole Volume:	879.508 F3	FROM 3420.00 F	TO 502.000 F
Integrated Cement Volume:	557.281 F3	FROM 3420.00 F	TO 502.000 F
Integrated Transit Time:	.373768 S	FROM 3420.00 F	TO 502.000 F

EVENT MARK SUMMARY:

OUTPUT	INTERVAL BETWEEN PIPS	DEPTH TRACK EDGE
Integrated Transit Time	.001000000 S	RIGHT EDGE



CP 38.2 FILE 18 01-JUL-1993 18:41
 INPUT FILE(S) 12 CREATION DATE 01-JUL-1993 16:34



CP 38.2 FILE 18 01-JUL-1993 18:26
 INPUT FILE(S) 12 CREATION DATE 01-JUL-1993 16:34

SENSOR MEASURE POINT TO TOOL ZERO

SRAT	41.7 FEET	AMPL	44.1 FEET
CRFS	43.1 FEET	CBL	44.1 FEET
TT2	44.1 FEET	DETE	43.1 FEET
TT4	39.3 FEET	TT1	40.3 FEET
TT	44.1 FEET	TO	44.1 FEET
CBSL	44.1 FEET	TTSL	44.1 FEET
CALI	31.9 FEET	GR	62.7 FEET
ILM	6.1 FEET	ILD	9.9 FEET
SP	2.5 FEET	SFL	6.8 FEET
TENS	2.5 FEET	SPAR	2.5 FEET
NOIS	2.5 FEET		

PARAMETERS

NAME	VALUE	UNIT	NAME	VALUE	UNIT
SMB	DISA		VDLR	2IN	
DOCA	DISA		RATE	15	HZ
DO	/5		DETE	E2	
NMSG	180	US	CBLG	35	US
AMPL	2		CBL	UT	
WFM	1		SS	FAST	
TOD	DISA		DTF	189.000	US/F
DTM	56.00000	US/F	CDTS	100.000	
SPFS	R-H	F	FB	NORM	
DO	0.0		FMU	9.50000	LB/C
MSEC	7.00000	MM/M	SBK	0.00000	OHMM
DSEC	5.10000	MM/M	FCD	4.50000	IN
NCJT	GSRY		FPHI	SPHI	
DWCO	512		DSIN	5	US
RDEL	200	US	BS	7.87500	IN
RHC	OFF				

COMPANY NAHAMA & WEAGANT ENERGY CO. **SCHL** FR 3414.0 F
WELL BEAVER CREEK 31-34-75 RD#1 **SCHL** TD 3420.0 F
FIELD MIST **DRLR** TD 3419.0 F
COUNTY COLUMBIA **STATE** OREGON **Elev** 1637.0 F
DB 1636.0 F
GL 1626.0 F