

F3C/CL/GR 5"

COMPANY: REICHHOLD ENERGY CORPORATION  
 WELL: ADAMS 332-34 REBRILL #1  
 FIELD: MIST  
 COUNTY: OREGON  
 STATE: OREGON  
 LOCATION: 1590'S & 261' E FROM  
 SEC: 34 N 1/4 CORNER T1P1 7N  
 SECTION: 34  
 PERMANENT DATUM: GL  
 ELEVATION: 1529.0 F  
 ELEVATIONS: K21 1536.0 F  
 ELEVATION: D11 1525.0 F  
 LOG MEASURED FROM: PERM. DATUM  
 DRUG: 11.0-F  
 DATE: 12 SEP 84  
 RUN NO: 1  
 DEPTH-DRILLER: 3100.0 F  
 DEPTH-DIGGER: 3072.0 F  
 DEPTH-LOG: 2009.0 F  
 DOP LOG INTERVAL: 2009.0 F  
 CASING-DRILLER: 412 F  
 CASING-LOGGERS: 8 3/8  
 BIT SIZE: 7 7/8

OTHER SERVICES:  
 BNC  
 HDT

PROGRAM  
 TAPE NO:  
 SERIALIZED  
 INDEXED  
 DATED: 410787

TYPE FLUID IN HOLE: GEL/LIGNO  
 DENSITY: 9.3 LB/G  
 VISCOSITY: 49.0 S  
 PH: 8.5  
 FLUID LOSS: 5.4 C3  
 SOURCE OF SAMPLE: CIRC.  
 RM: 3.580 DHMM AT 68.0 DEGF  
 RMF: 2.750 DHMM AT 60.0 DEGF  
 RMC: 2.920 DHMM AT 60.0 DEGF  
 SOURCE RMF/RMC: MEASURED/MEASURED  
 RM AT BHT: 3.016 DHMM AT 62.0 DEGF  
 RMC AT BHT: 2.070 DHMM AT 62.0 DEGF  
 RMC AT BHT: 2.198 DHMM AT 62.0 DEGF

TIME STOPPED: 0700  
 TIME LOGGER ON BTH: 1122

MAX. REC. TEMP: 62.0 DEGF

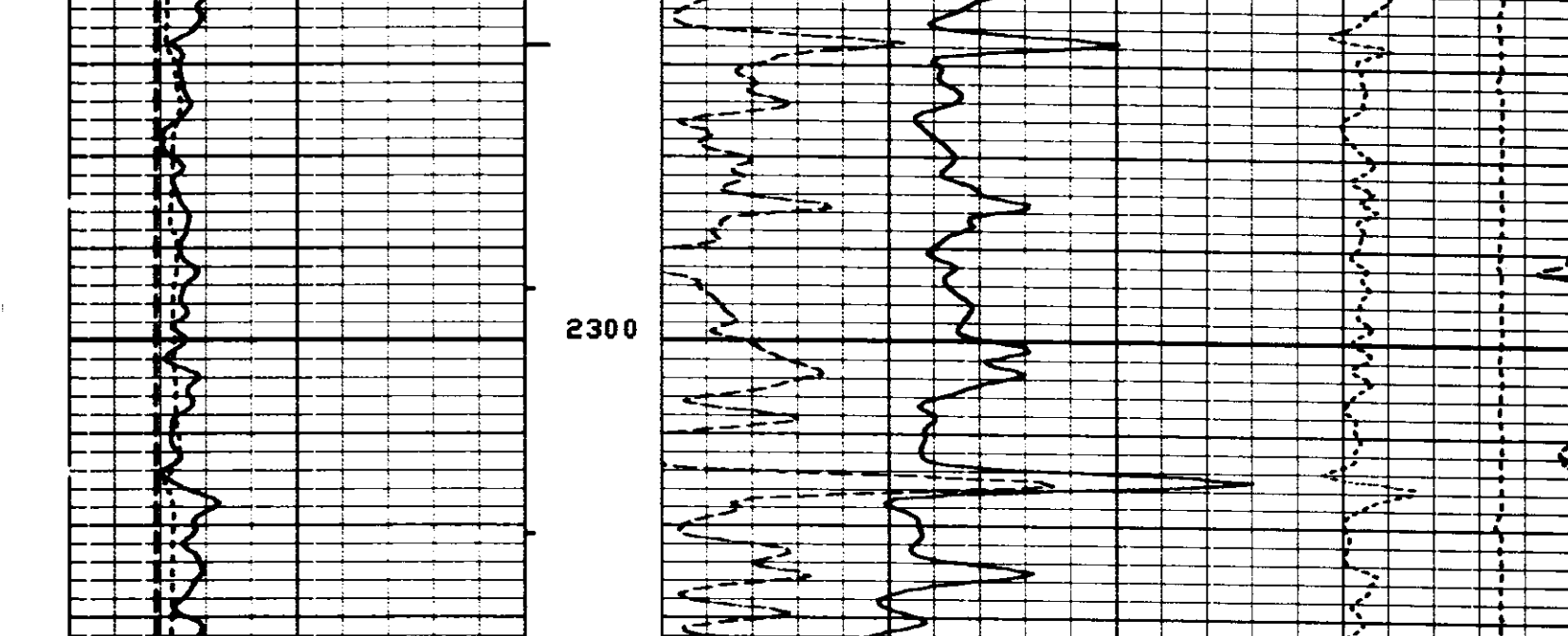
LOGGING UNIT NO: 8126  
 LOGGING UNIT LOC: SACRAMENTO  
 RECORDED BY: ANDERSEN  
 WITNESSED BY: THORAS/MEYERS

REMARKS:

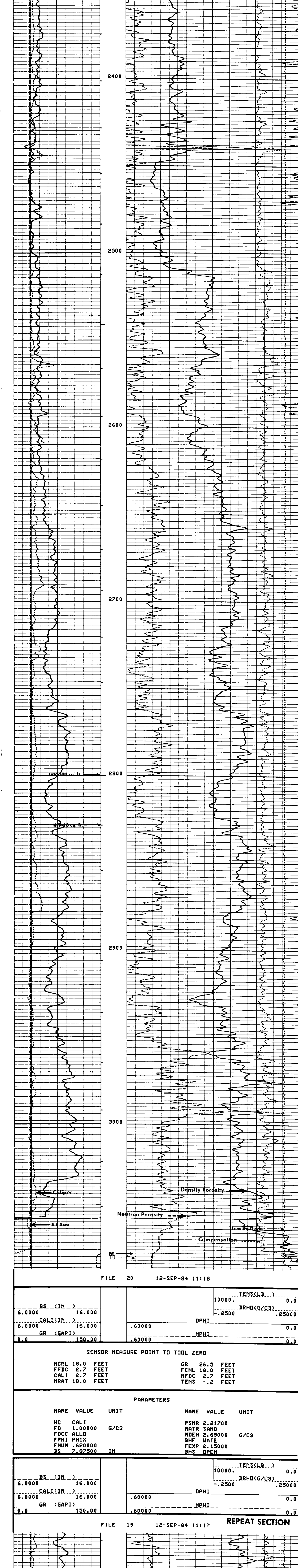
EQUIPMENT NUMBERS-  
 NLM 418 PGS 599 PDH 1176 CNC 2607  
 SGT 583

ALL INTERPRETATIONS ARE OPINIONS BASED ON INFERENCES FROM ELECTRICAL OR OTHER MEASUREMENTS AND WE CANNOT, AND DO NOT GUARANTEE THE ACCURACY OR CORRECTNESS OF ANY INTERPRETATIONS, AND WE SHALL NOT, EXCEPT IN THE CASE OF GROSS OR WILLFUL NEGLIGENCE ON OUR PART, BE LIABLE OR RESPONSIBLE FOR ANY LOSS, COSTS, DAMAGES OR EXPENSES INCURRED OR SUSTAINED BY ANYONE RESULTING FROM ANY INTERPRETATION MADE BY ANY OF OUR OFFICERS, AGENTS OR EMPLOYEES. THESE INTERPRETATIONS ARE ALSO SUBJECT TO OUR GENERAL TERMS AND CONDITIONS AS SET OUT IN OUR CURRENT PRICE SCHEDULE.

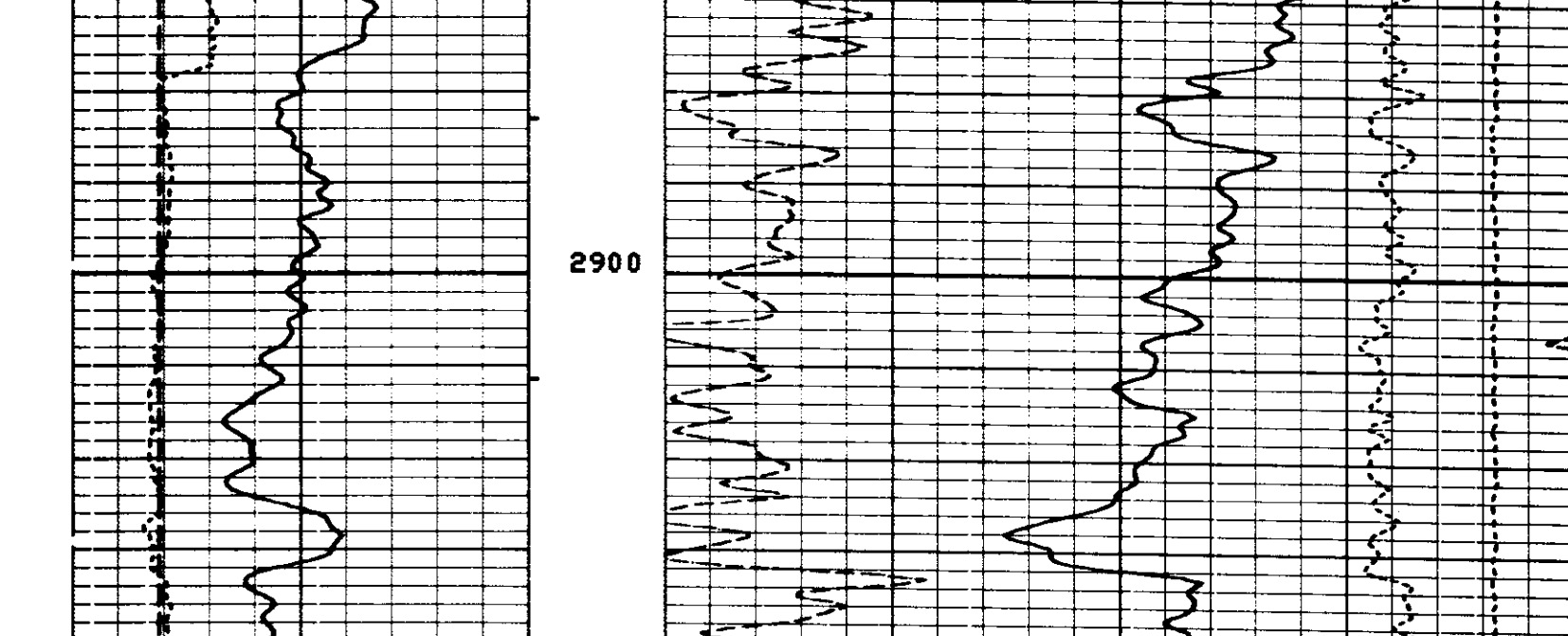
FILE 103 12-SEP-84 12:33  
 DATA ACQUIRED 12-SEP-84 10:06



FILE 20 12-SEP-84 12:00



FILE 20 12-SEP-84 11:18

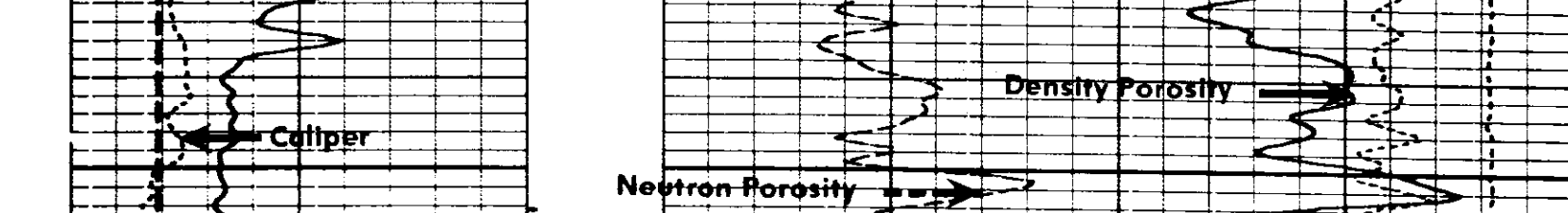


SENSOR MEASURE POINT TO TOOL ZERO

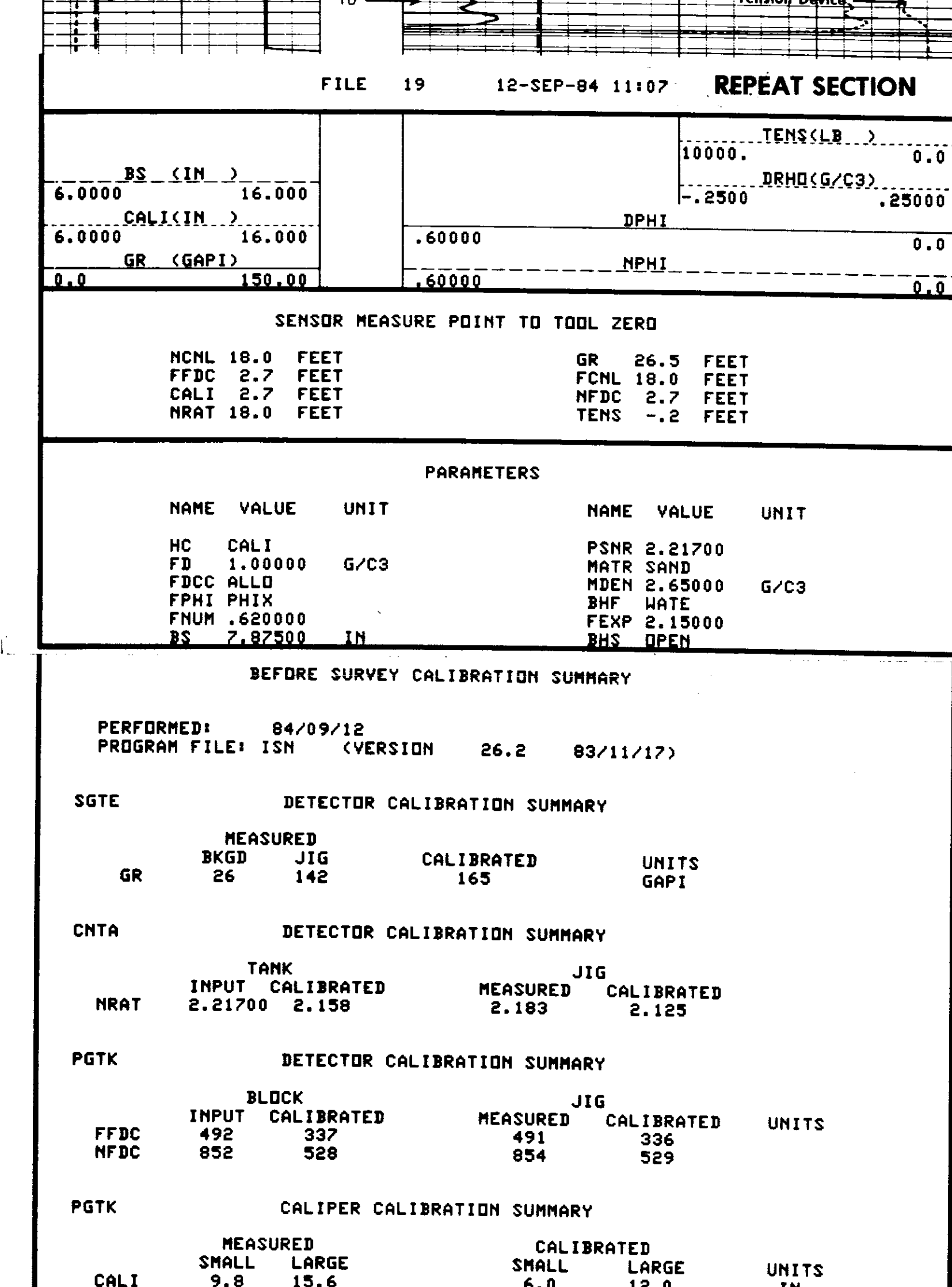
NCNL 18.0 FEET FCNL 26.5 FEET  
 FFDC 2.7 FEET NFDC 18.0 FEET  
 CALI 2.7 FEET TENS -2 FEET  
 NRAT 18.0 FEET

PARAMETERS

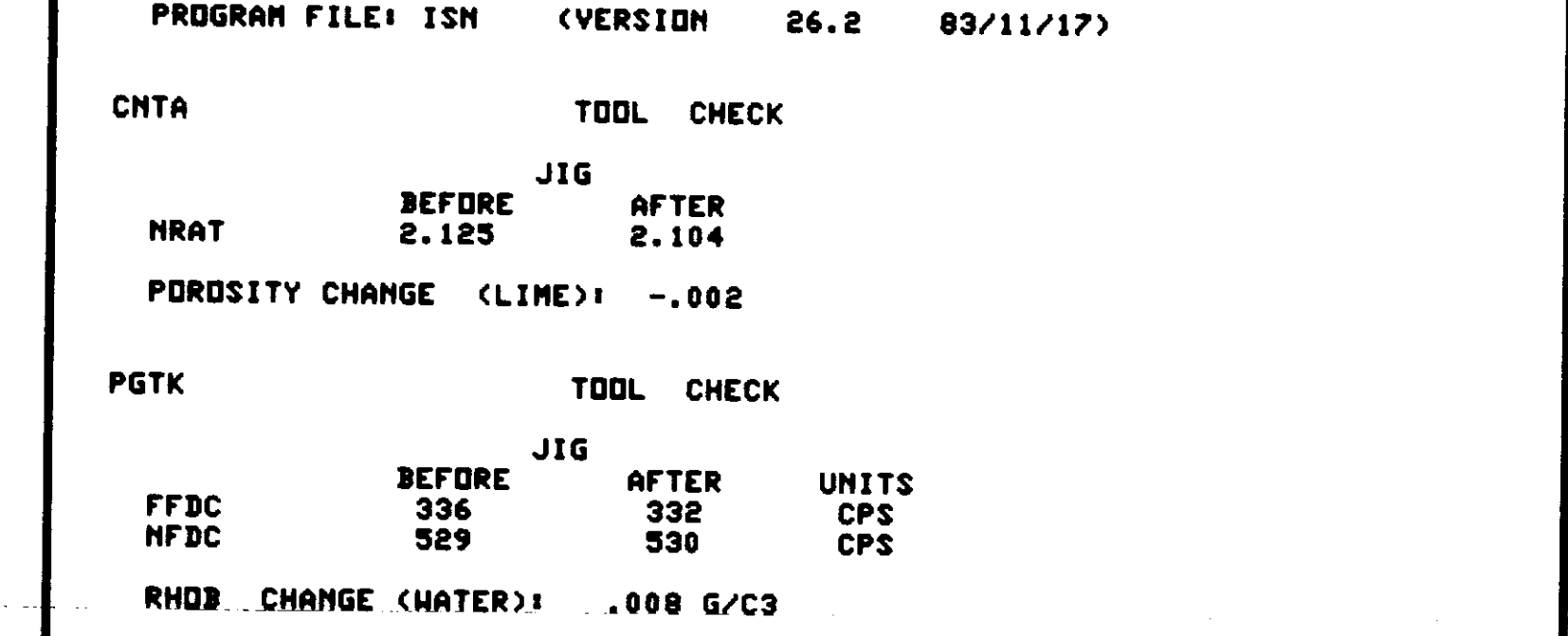
NAME	VALUE	UNIT	NAME	VALUE	UNIT
HC	CALI		PSNR	2.21700	
FD	1.00000	G/C3	MATR SAND	491	
FDCC	ALLD		NDEN	2.65000	G/C3
FPHI	PHIX		BHF	WATE	
FNUM	.620000		FEWP	2.15000	
BS	7.82500	IN	BHS	OPEN	



FILE 19 12-SEP-84 11:17 REPEAT SECTION



FILE 19 12-SEP-84 11:07 REPEAT SECTION



SENSOR MEASURE POINT TO TOOL ZERO

NCNL 18.0 FEET FCNL 26.5 FEET  
 FFDC 2.7 FEET NFDC 18.0 FEET  
 CALI 2.7 FEET TENS -2 FEET  
 NRAT 18.0 FEET

PARAMETERS

NAME	VALUE	UNIT	NAME	VALUE	UNIT
HC	CALI		PSNR	2.21700	
FD	1.00000	G/C3	MATR SAND	491	
FDCC	ALLD		NDEN	2.65000	G/C3
FPHI	PHIX		BHF	WATE	
FNUM	.620000		FEWP	2.15000	
BS	7.82500	IN	BHS	OPEN	

BEFORE SURVEY CALIBRATION SUMMARY

PERFORMED: 84/09/12  
 PROGRAM FILE: ISH (VERSION 26.2 83/11/17)

SGTE DETECTOR CALIBRATION SUMMARY

MEASURED	BLOCK	JIG	CALIBRATED	UNITS
GR	26	142	165	GAPI

CNTA DETECTOR CALIBRATION SUMMARY

TANK	INPUT	CALIBRATED	MEASURED	JIG	CALIBRATED	UNITS
NRAT	2.21700	2.158	2.183	2.125		

PGTK DETECTOR CALIBRATION SUMMARY

INPUT	BLOCK	CALIBRATED	MEASURED	JIG	CALIBRATED	UNITS
FFDC	492	337	491	336		
NFDC	852	528	854	529		

PGTK CALIPER CALIBRATION SUMMARY

MEASURED	SMALL	LARGE	CALIBRATED	SMALL	LARGE	UNITS
CALI	9.8	15.6	6.0	12.0		IN

FILE 22 12-SEP-84 12:01

AFTER SURVEY TOOL CHECK SUMMARY

PERFORMED: 84/09/12  
 PROGRAM FILE: ISH (VERSION 26.2 83/11/17)

CNTA TOOL CHECK

BEFORE	JIG	AFTER	UNITS
NRAT	2.125	2.104	

PGTK TOOL CHECK

BEFORE	JIG	AFTER	UNITS
FFDC	336	332	CPS
NFDC	529	530	CPS

RHND CHANGE (WATER): .008 G/C3

FILE 23 12-SEP-84 12:47

SHOP SUMMARY

PERFORMED: 84/08/17  
 PROGRAM FILE: SHOP (VERSION 26.2 83/11/17)

PGTK DETECTOR CALIBRATION SUMMARY

MEASURED	BLOCK	CALIBRATED	MEASURED	JIG	CALIBRATED	UNITS
FFDC	492	337	494	331		CPS
NFDC	852	528	854	529		CPS

(PGS:599, PDH:1176, GSR:6487, SFT:1171)

SHOP SUMMARY

PERFORMED: 84/08/17  
 PROGRAM FILE: SHOP (VERSION 26.2 83/11/17)

CNTA DETECTOR CALIBRATION SUMMARY

MEASURED	TANK	CALIBRATED	MEASURED	JIG	CALIBRATED	UNITS
NRAT	2.217	2.158	2.183	2.125		

(CNC:2607, CND:2600)