

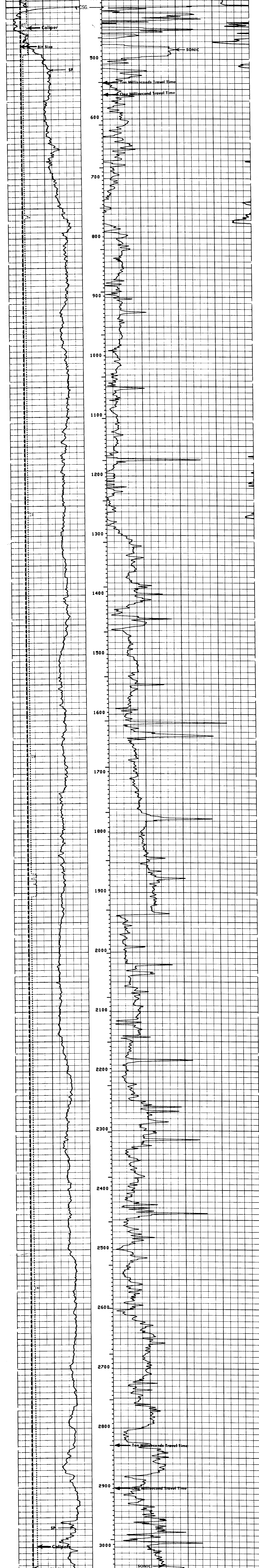
COMPANY: REICHHOLD ENERGY CORPORATION  
 WELL: "ADAMS" 088-34 REBRILL #1  
 FIELD: MIST  
 COUNTY: COLUMBIA  
 STATE: OREGON  
 LOCATION: 1950'S & 86' E FROM N 1/4 CORNER OF ...  
 SECT: 34 RGE1 5M  
 PERMANENT DATUM: GL  
 ELEV. OF PERM. DATUM: 1585.0 F  
 LOG MEASURED FROM PERM. DATUM  
 DRUG. MEASURED FROM: DATUM  
 DATE: 12 SEP 84  
 DEPTH-DRILLER: 3100.0 F  
 DEPTH-LOGGER: 3079.0 F  
 BTM. LOG INTERVAL: 3065.0 F  
 TOP LOG INTERVAL: 463.0 F  
 CASING-DRILLER: 412 F  
 CASING-LOGGER: 8 5/8  
 BIT SIZE: 7 7/8  
 OTHER SERVICES:-  
 DIL  
 FDC/CNL/GR  
 HDT  
 PROGRAM:  
 TABLE:  
 SERVICE:  
 ORDER NO: 410787

TYPE FLUID IN HOLE: GEL/LIGNO  
 DENSITY: 9.3 LB/G  
 VISCOSITY: 49.0 S  
 PHI: 8.5  
 FLUID LOSS: 5.4 C3  
 SOURCE OF SAMPLE: CIRC.  
 RM: 3.580 OHMM AT 60.0 DEGF  
 RMF: 2.750 OHMM AT 60.0 DEGF  
 RMC: 2.920 OHMM AT 60.0 DEGF  
 SOURCE RMF/RMC: MEASURED/MEASURED  
 RM AT BHT: 3.016 OHMM AT 82.0 DEGF  
 RMC AT BHT: 2.070 OHMM AT 82.0 DEGF  
 TIME CIRC. STOPPED: 0700  
 TIME LOGGER ON BTM.: 1351  
 MAX. REC. TEMP: 82.0 DEGF  
 LOGGING UNIT NO: 8126  
 LOGGING UNIT LOC: SACRAMENTO  
 RECORDED BY: ANDERSEN  
 WITNESSED BY: THOMAS/MEYERS

REMARKS:  
 EQUIPMENT NUMBERS-  
 SLM 1281 SLC 1029 SLS 1082 MCD 1106  
 SGT 583

ALL INTERPRETATIONS ARE OPINIONS BASED ON INFERENCES FROM ELECTRICAL OR OTHER MEASUREMENTS AND WE CANNOT, AND DO NOT GUARANTEE THE ACCURACY OR CORRECTNESS OF ANY INTERPRETATIONS, AND WE SHALL NOT, EXCEPT IN THE CASE OF GROSS OR WILLFUL NEGLIGENCE ON OUR PART, BE LIABLE OR RESPONSIBLE FOR ANY LOSS, COSTS, DAMAGES OR EXPENSES INCURRED OR SUSTAINED BY ANYONE RESULTING FROM ANY INTERPRETATION MADE BY ANY OF OUR OFFICERS, AGENTS OR EMPLOYEES. THESE INTERPRETATIONS ARE ALSO SUBJECT TO OUR GENERAL TERMS AND CONDITIONS AS SET OUT IN OUR CURRENT PRICE SCHEDULE.

FILE 29 12-SEP-84 15:40  
 DATA ACQUIRED 12-SEP-84 14:45



FILE 103 12-SEP-84 15:08  
 DATA ACQUIRED 12-SEP-84 09:25

BS (IN) 6.0000 16.0000  
 CALI (IN) 6.0000 16.0000  
 SP (MV) -100.0 0.0  
 DT (US/F) 150.00 50.000

SENSOR MEASURE POINT TO TOOL ZERO  
 CBL 15.0 FEET AMPL 15.0 FEET  
 TT3 11.3 FEET TT4 10.3 FEET  
 TT1 14.0 FEET TT2 15.0 FEET  
 CALI 3.0 FEET SP 12.5 FEET  
 SPAR -1.5 FEET SR -1.5 FEET  
 NDIS 6.8 FEET TENS 2.5 FEET

PARAMETERS  
 NAME VALUE UNIT NAME VALUE UNIT  
 HSV1 WF1 DHS 16  
 DSIN 5 DDEL 200 US  
 CDT5 120.000 DWCO 512  
 DTF 189.000 DTH 56.0000 US/F  
 FEKP 2.15000 FPHI SPHI  
 BHS OPEN FNUM .620000  
 DD2 0.0 BS 7.97500 IN  
 SPDR -.010000 DC 0.0 F  
 PP NDRH