

COMPANY: REICHHOLD ENERGY CORPORATION

WELL: "ADAMS" 882-34

FIELD: MIST

COUNTY: COLUMBIA

STATE: OREGON

LOCATION: 1550 S. & 26th FROM N 1/4 CORNER T1P: 7N

SEC: 34

REG: 5H

PERMANENT DATUM: GL

ELEV. OF PERM. DATUM: 1585.0'

ELEV. OF PERM. DATUM: 1585.0'

LOG MEASURED FROM: K8

ORIG. MEASURED FROM: K8

DATE: 30 AUG 1984

RUN NO: 1

DEPTH-DRILLER: 3284.0'

DEPTH-LOGGER: 3279.0'

BTM LOG INTERVAL: 3279.0'

TOP LOG INTERVAL: 412.0'

CASING-DRILLER: 412'

CASING-LOGGER: 412'

CASING: 8 5/8

BIT SIZE: 7 7/8

OTHER SERVICES-  
BHC  
HDT

TYPE FLUID IN HOLE: GEL/LIGNO  
DENSITY: 9.3 LB/G  
VISCOSITY: 47.0 S  
PH: 9.5  
FLUID LOSS: 5.4 C3  
SOURCE OF SAMPLE: FLOWLINE  
RM: 2.810 DHMM AT 62.0 DEG  
RMF: 2.720 DHMM AT 62.0 DEG  
RMC: 2.900 DHMM AT 62.0 DEG  
SOURCE RMF/RMC: MEASURED/MEASURED  
RM AT BHT: 1.829 DHMM AT 99.0 DEG  
RMC AT BHT: 1.770 DHMM AT 99.0 DEG  
RMC AT BHT: 1.833 DHMM AT 99.0 DEG

TIME CIRC. STOPPED: 2000 8-30  
TIME LOGGER ON BTH.: 2300  
MAX. REC. TEMP: 99.0 DEG F

LOGGING UNIT NO: 8178  
LOGGING UNIT LOC: SACRAMENTO  
RECORDED BY: BENTLEY/ZWALLER  
WITNESSED BY: ALGER

REMARKS:  
INCREASINGLY FRESHER CONMATE WATER ABOVE 800'.  
UNCONSOLIDATED SANDS PRODUCE LARGE INVASION PROFILES,  
AFFECTING ILM. Cl<sup>-</sup> = 400 PPM

EQUIPMENT NUMBERS-  
DIS 1422 DIC 47 SLS RC 236 SLC FA 1589  
MCDB 1502 IEM BD 162 SLM DA 443

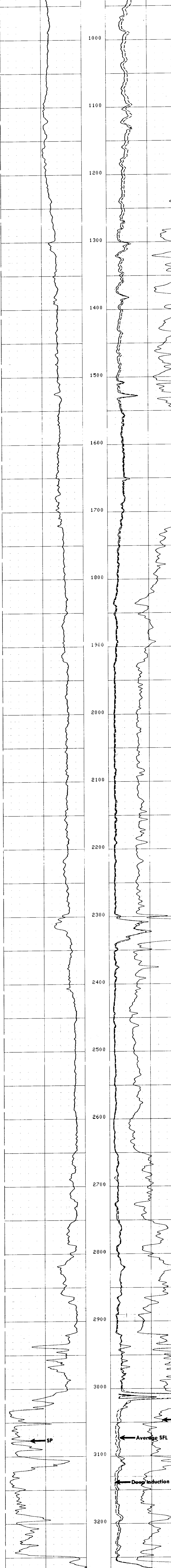
ALL INTERPRETATIONS ARE OPINIONS BASED ON INFERENCES FROM ELECTRICAL OR OTHER MEASUREMENTS AND WE CANNOT, AND DO NOT GUARANTEE THE ACCURACY OR CORRECTNESS OF ANY INTERPRETATIONS, AND WE SHALL NOT, EXCEPT IN THE CASE OF GROSS OR WILLFUL NEGLIGENCE ON OUR PART, BE LIABLE OR RESPONSIBLE FOR ANY LOSS, COSTS, DAMAGES OR EXPENSES INCURRED OR SUSTAINED BY ANYONE RESULTING FROM ANY INTERPRETATION MADE BY ANY OF OUR OFFICERS, AGENTS OR EMPLOYEES. THESE INTERPRETATIONS ARE ALSO SUBJECT TO OUR GENERAL TERMS AND CONDITIONS AS SET OUT IN OUR CURRENT PRICE SCHEDULE.

CHANGED PARAMETERS

NAME	VALUE	UNIT	DEPTH ( F )	NAME	VALUE	UNIT	DEPTH ( F )
SPDR	.0750000		900.0				

SP (MV)	ILD (DHMM)	SFLA (DHMM)	SFLA (DHMM)	CILD (MMHO)
-100.0	0.0	0.0	30.000	0.0

FILE 101 31-AUG-84 04:38  
DATA ACQUIRED 31-AUG-84 00:01



FILE 101 31-AUG-84 04:31  
DATA ACQUIRED 30-AUG-84 23:16

SP (MV)	ILD (DHMM)	SFLA (DHMM)	SFLA (DHMM)	CILD (MMHO)
-100.0	0.0	0.0	30.000	0.0

SENSOR MEASURE POINT TO TOOL ZERO

CBL 37.0 FEET	AMPL 37.0 FEET
TT3 33.3 FEET	TT4 32.3 FEET
TT1 36.0 FEET	TT2 37.0 FEET
CALI 56.1 FEET	SRAT 34.5 FEET
SFL 6.4 FEET	ILD 9.4 FEET
TENS 2.5 FEET	ILM 5.7 FEET
NDIS 28.8 FEET	SPAR 2.5 FEET

PARAMETERS

NAME	VALUE	UNIT	NAME	VALUE	UNIT
MSV1	HF1		DWS	16	
DSIN	5	US	DDEL	200	US
CDTS	100.000		DWCO	512	
DTF	189.000	US/F	DTM	56.0000	US/F
SBR	1.00000	DHMM	DSEC	2.20000	MMHO
FPHI	SPHI		MSEC	4.90000	MMHO
FNUM	.620000		FEMP	2.15000	
BS	7.87500	IN	BMS	OPEN	
SPDR	0.0		DO	0.0	F
PP	NDRM				