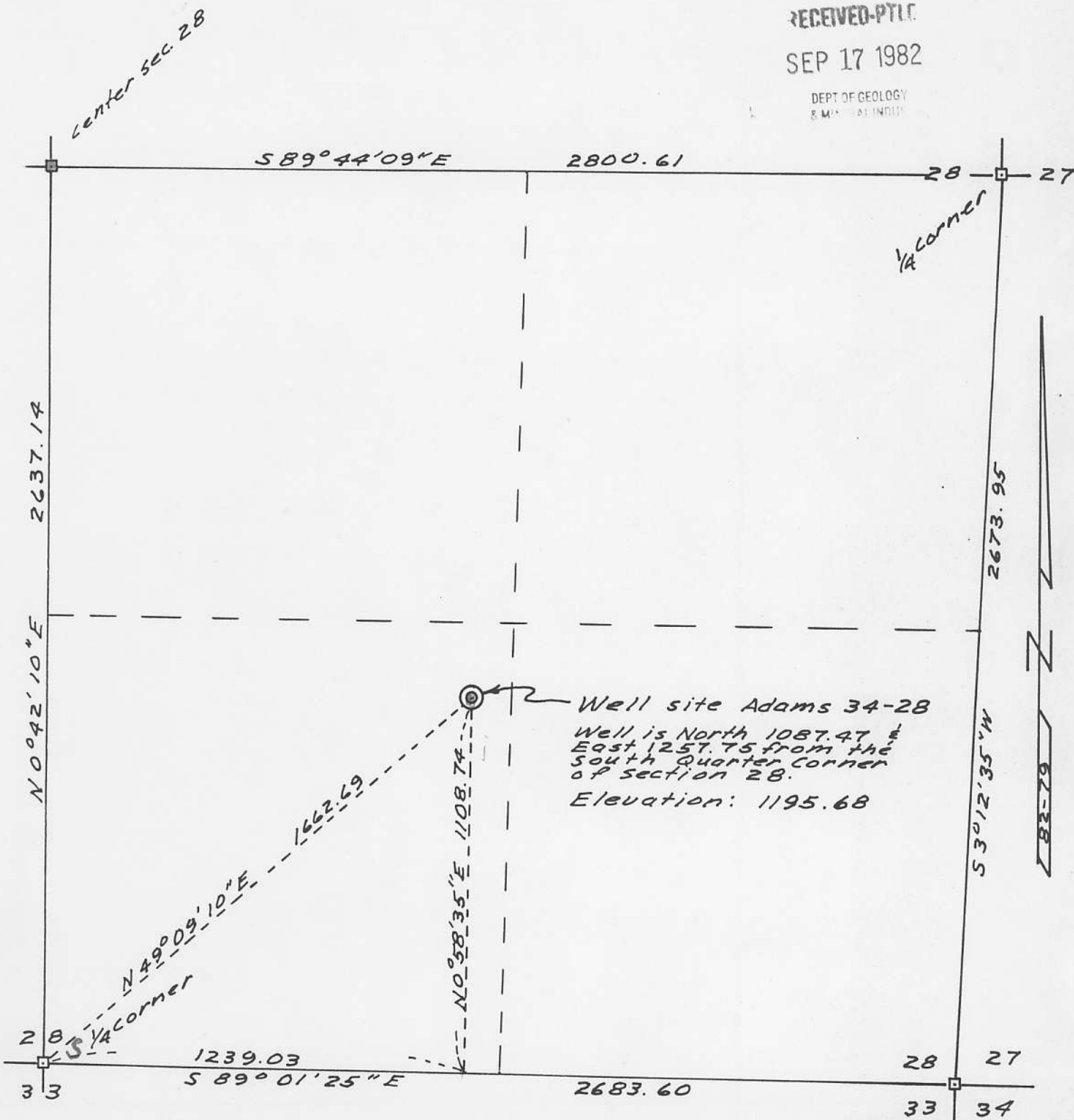


RECEIVED-PTLC
SEP 17 1982

DEPT OF GEOLOGY
S.M. INDIAN



Well site Adams 34-28
 Well is North 108° 47' E
 East 1257.75 from the
 South Quarter corner
 of section 28.
 Elevation: 1195.68

Note: Elevations based on USGS
 BM # 597 brass disc on the
 N.E. corner of the bridge
 approx. 0.6 miles N.W. of Mist
 on the Nehalem Highway
 Elevation 533.669