



WELL LOGGING, INC.

COMPANY NAHAMA & WAGANT ENERGY COMPANY

WELL CEDAR POINT 14-26-64

FIELD MIST

LOCATION 1239.10' North and 251.00' East of the SW corner of Sec. 26, T2N R24W, L2E, W. M.

COUNTY, STATE Columbia, Oregon

API WELL INDEX NO.

ELEVATION 1037.70' G.L. 1047.70' K.B.

DATES FROM 9-5-91 TO 9-11-91

DEPTHS FROM 40' K.B. TO 2703' K.B.

SPUD DATE 9-5-91

DRILLING CONTRACTOR Taylor Drilling Co., Rig #

MUD COMPANY Beaver Drilling Fluids

LOGGING GEOLOGISTS Jim Eastes, John Riddle

ABBREVIATIONS table with columns for abbreviations and full names (e.g., NB BIT, MW MUD WEIGHT, VIS FUNNEL VISCOSITY, etc.)

CASING RECORD table with columns for casing size and type (e.g., 16" cond. AT 30' K.B., 9.625" AT 520' K.B., etc.)

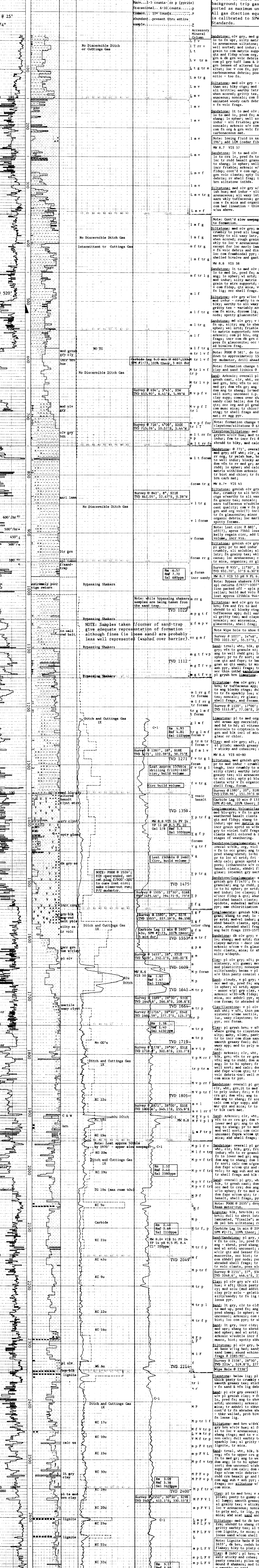
Legend table for rock types and symbols (e.g., SAND/SANDSTONE, CLAY, LIMESTONE, TUFF, LIGNITE, GLAUCONITE, etc.)

OIL: BASED ON LIVE OIL IN UNWASHED CUTTINGS AND PERCENT STAINING AND FLUORESCENCE OF WASHED SAMPLES.

ANALYSIS OF RETURNS

CHROMATOGRAPH - PPM table with columns for METHANE, ETHANE, PROPANE, BUTANES, PENTANES, etc.

REMARKS table with columns for LITHOLOGIC DESCRIPTION, SURVEYS, OTHER TEST DATA, etc.



DRILLER'S DEPTH 2702' K.B. Run Halliburton Logging Services DILL/AWL/GR; FED