

COMPANY: REICHHOLD ENERGY CORPORATION

WELL: BUSCH #14-15

FIELD: MIST

COUNTY: COLUMBIA

STATE: OREGON

LOCATION: 1187'E & 317'N OF THE

SEC: 15

PERM. DATUM: GL

ELEV. OF PERM. DATUM: 529.0 F

LOG MEASURED FROM: KB

DRLG. MEASURED FROM: KB

DATE: 7 AUG 84

RUN NO: 1

DEPTH-DRILLER: 2298.0 F

DEPTH-LOGGER: 2298.0 F

BM. LOG INTERVAL: 2298.0 F

TOP LOG INTERVAL: 406.0 F

CASING-DRILLER: 406 F

CASING-LOGGER: 406 F

CASING: 8 5/8"

BIT SIZE: 7 7/8"

BIT DEPTH: 2298 F

OTHER SERVICES-  
DIL-SFL  
FDC-CNL-GR  
HDI

PROGRAM  
TABLE NO:  
SERV. NO:  
ORDER NO:  
432222

TYPE FLUID IN HOLE: GEL/LIGNO  
DENSITY: 12.1 LB/G  
VISCOSITY: 76.0 S  
PH: 9.0  
FLUID LOSS: 4.4 C3  
SOURCE OF SAMPLE: FLOWLINE  
RM: 1.430 DHMM AT 88.0 DEGF  
RMF: 1.150 DHMM AT 86.0 DEGF  
RMC: 1.750 DHMM AT 85.0 DEGF  
SOURCE RMF/RMC: MEAS/MEAS  
RM AT BHT: 1.331 DHMM AT 95.0 DEGF  
RMF AT BHT: 1.048 DHMM AT 95.0 DEGF  
RMC AT BHT: 1.578 DHMM AT 95.0 DEGF

TIME CIRC. STOPPED: 1700  
TIME LOGGER ON BTM: 1700

MAX. REC. TEMP: 95.0 DEGF

LOGGING UNIT NO: 8178  
LOGGING UNIT LOC: SACRAMENTO

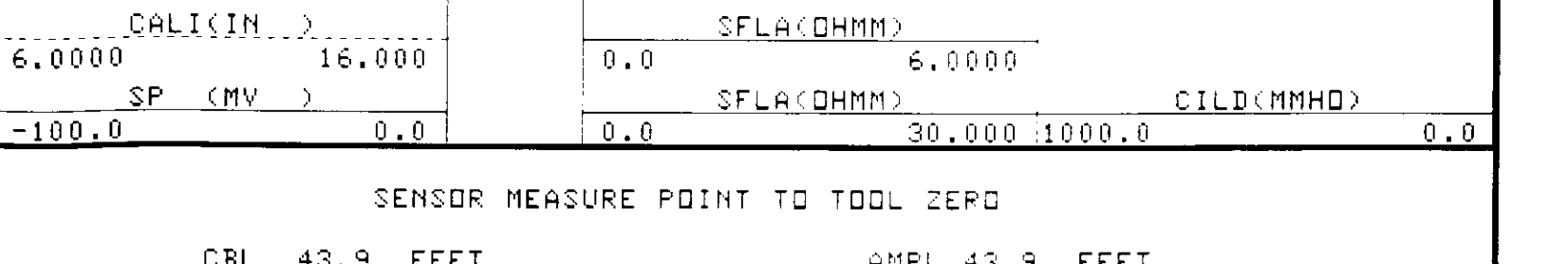
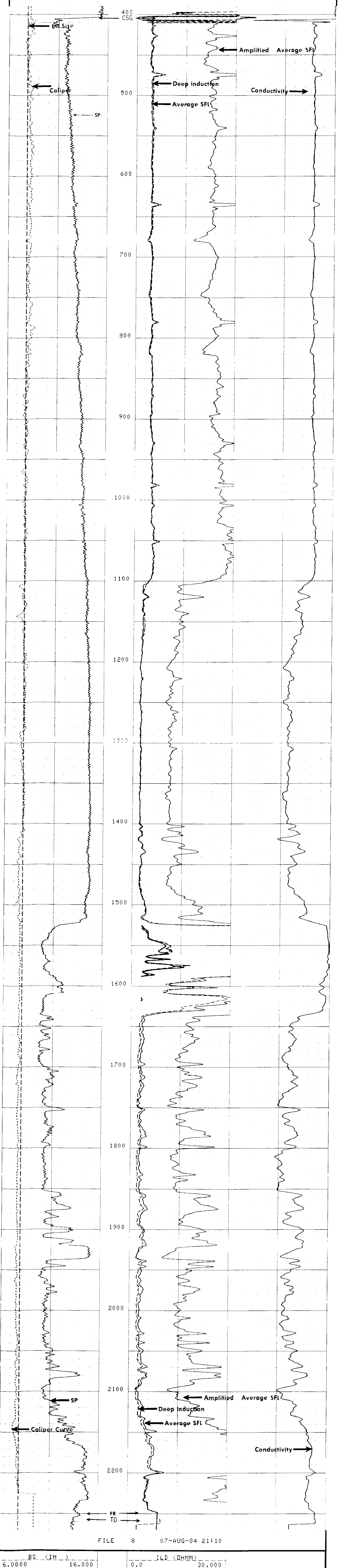
RECORDED BY: BENTLEY  
WITNESSED BY: ALGER

REMARKS:  
SP NOISE APPARENTLY DUE TO SHORT CABLE LENGTH (9500'). COULD NOT GET GOOD SP WITH DUMMY CABLE IN LINE.

EQUIPMENT NUMBERS-  
DIS 1422 DIC 47 MCD 1502 SLS RC 236  
SLC FA 1589 IEM BD 232 SLM DA 383

ALL INTERPRETATIONS ARE OPINIONS BASED ON INFERENCES FROM ELECTRICAL OR OTHER MEASUREMENTS AND WE CANNOT, AND DO NOT GUARANTEE THE ACCURACY OR CORRECTNESS OF ANY INTERPRETATIONS; AND WE SHALL NOT, EXCEPT IN THE CASE OF GROSS OR WILLFUL NEGLIGENCE ON OUR PART, BE LIABLE OR RESPONSIBLE FOR ANY LOSS, COSTS, DAMAGES OR EXPENSES INCURRED OR SUSTAINED BY ANYONE RESULTING FROM ANY INTERPRETATION MADE BY ANY OF OUR OFFICERS, AGENTS OR EMPLOYEES. THESE INTERPRETATIONS ARE ALSO SUBJECT TO OUR GENERAL TERMS AND CONDITIONS AS SET OUT IN OUR CURRENT PRICE SCHEDULE.

FILE 13 07-AUG-84 22:35  
DATA ACQUIRED 07-AUG-84 21:55



SENSOR MEASURE POINT TO TOOL ZERO

CBL	43.9	FEET	AMPL	43.9	FEET
TT3	40.1	FEET	TT4	39.1	FEET
TT1	42.9	FEET	TT2	43.9	FEET
CALI	31.8	FEET	SRAT	91.4	FEET
SFL	6.4	FEET	ILD	9.4	FEET
SP	2.5	FEET	ILM	5.7	FEET
TENS	2.5	FEET	SPAR	2.5	FEET
NOIS	35.6	FEET			

PARAMETERS

NAME	VALUE	UNIT	NAME	VALUE	UNIT
HSV1	WF1		DHS	16	
DSIN	5	US	DDEL	200	US
CDTS	100.000		DWCD	512	
DTF	189.000	US/F	DTM	56.0000	US/F
DFE	1.00000		DTL	1.00000	MMHD
FRHI	SFL1		MSEC	6.20000	MMHD
FNUM	620000		FEXP	2.15000	
BS	7.87500	IN	RHS	OPEN	