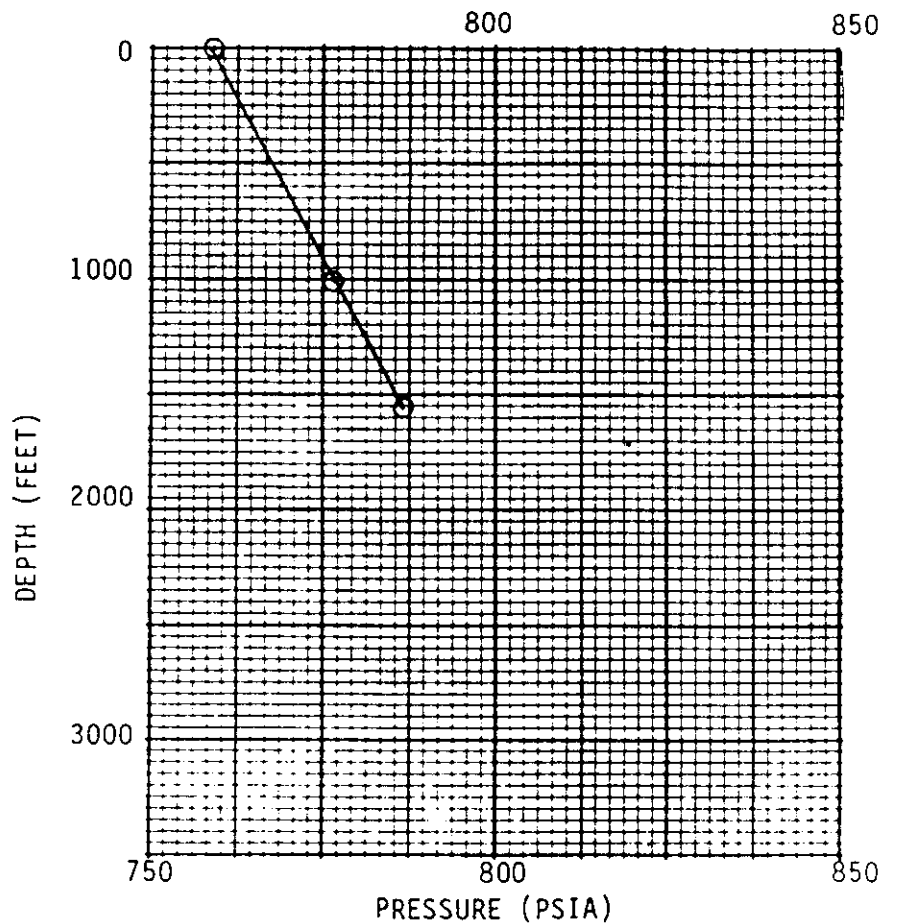


OREGON NATURAL GAS DEVELOPMENT CORP.

SUBSURFACE PRESSURE SURVEY

Well Name Busch #14-15 Field Mist Date 10/26/84
 County Columbia State Oregon Sec. 15 Twp. 6N Rge. 5W
 Casing 406'-8-5/8", K-55/24# Tubing 1462-2-3/8", J-55/ Perfs. 1524'-1556'
1753.5'-5 1/2", K-55/14# 4.6# 1564'-1579'
 Surface Elevation 541.8 Ft. Depth of survey 1550 Ft. True Vert. 1550 Ft.

DEPTH (Ft.)	PRESSURE (Psia)	GRADIENT (Psi/Ft)
0	758.5	---
1000	776.9	0.0184
1550	786.6	0.0176



NOTES:

1. Kuster KPG #18688 Pressure Recorder
2. Multi-rate flow test run along with pressure survey
3. Wellex TMD Log run 10/23/84

ONG/spsform