

CC 01



NEUTRON · MICRO-SEISMOGRAM LOG-CASED HOLE

COMPANY REICHOLD ENERGY CORPORATION
 WELL COLUMBIA CO. NO. 1 REDRILL NO. 1
 FIELD NEHALEM BASIN
 County COLUMBIA State ORE.

COMPANY REICHOLD ENERGY CORPORATION
 WELL COLUMBIA COUNTY NO. 1 R/D NO. 1
 FIELD NEHALEM BASIN
 COUNTY COLUMBIA STATE OREGON

Location 310' NORTH AND 812' WEST FROM THE CENTER OF:
 Sec. 11 Twp. 6N Rge. 5W

Other Services: NONE

Permanent Datum 6.L. Elev. 1021
 Log Measured From K.B. OR 11.2 Ft. Above Perm. Datum Elev.: K.B. 1032.2
 Drilling Measured From K.B. D.F. G.L. 1021.0

Run No.	ONE
Date & Time Survey	4-30-79 @ 8:00 A.M.
Date & Time Cementing	4-29-79 @ 3:45 A.M.
Type Cementing Operation	PRIMARY
Depth Driller	2505
Depth Welex	2505
Logged Interval	2500 to 1300
Casing Driller	4 1/2 @ 2505
Float Collar—D.V. Tool	N/A
Squeeze Depth	N/A
Amount & Type Cement	N/A
Amount & Type Admix	N/A
Type Fluid in Hole	WATER
Fluid Level	350
Salinity PPM Cl	N/A
Weight lb/gal—Vis.	N/A
Approx. Logged Cem. Top	1495
Calculated Cement Top	1500
Max. Hole Temperature	N/A °F.
Tool No.	N/A
Spacing Recorded	4
Equipment—Location	9017 BAKERSFIELD
Recorded by	MR. GARZA
Witnessed by	MR. MCBURNIE

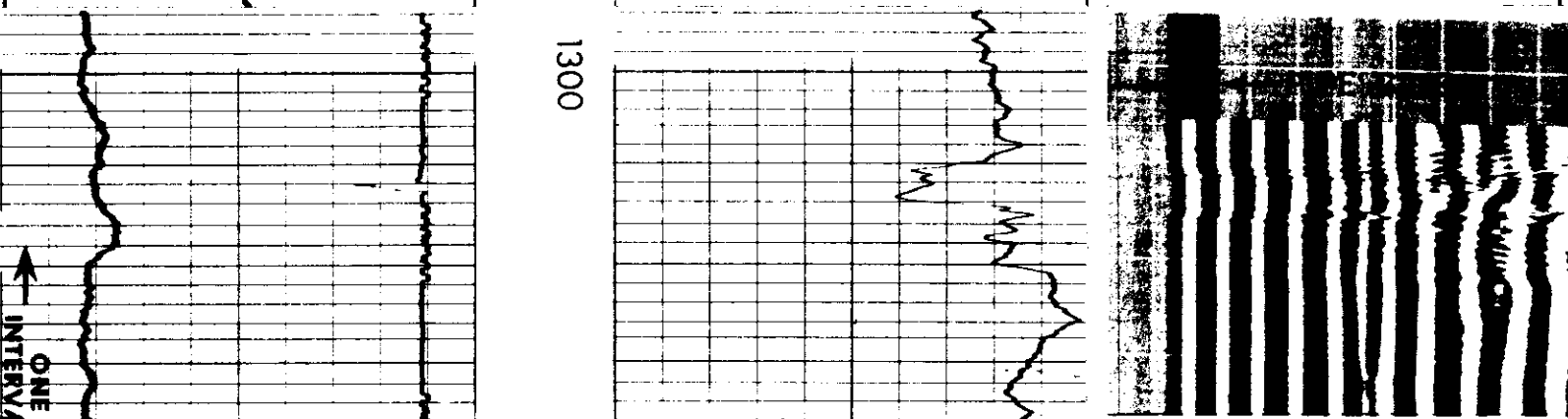
Fold Here

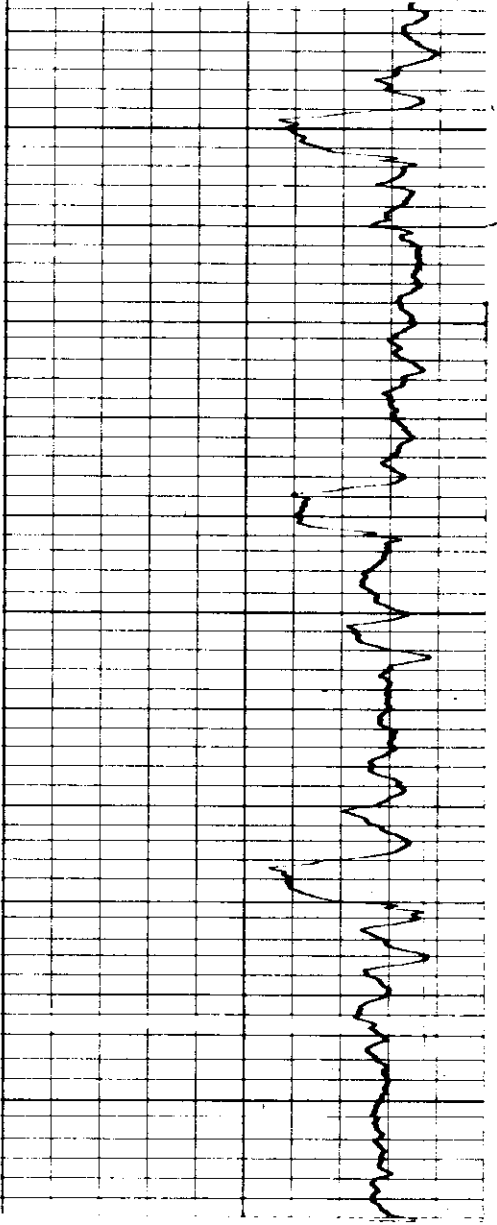
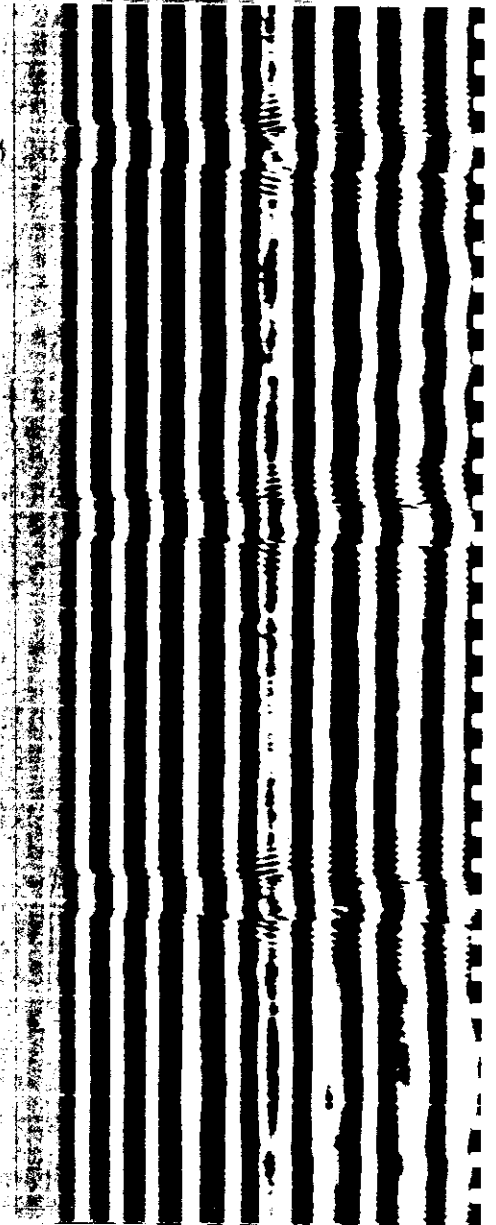
BORE HOLE RECORD			CASING RECORD				
Bit Size	From	To	Csg. Size	Wt.	From	To	Centralized Interval
			4 1/2	10 1/2	SUR.	2505	
							Scratched Interval
							Open Perforations

Service Ticket No. 044494 Remarks

Welex does not guarantee the accuracy of any interpretation of log data, conversion of log data to physical rock parameters, or recommendations which may be given by Welex personnel or which may appear on the log or in any other form. Any user of such data, interpretations, conversions, or recommendations agrees that Welex is not responsible, except where due to gross negligence or willful misconduct, for any loss, damages, or expenses resulting from the use thereof.

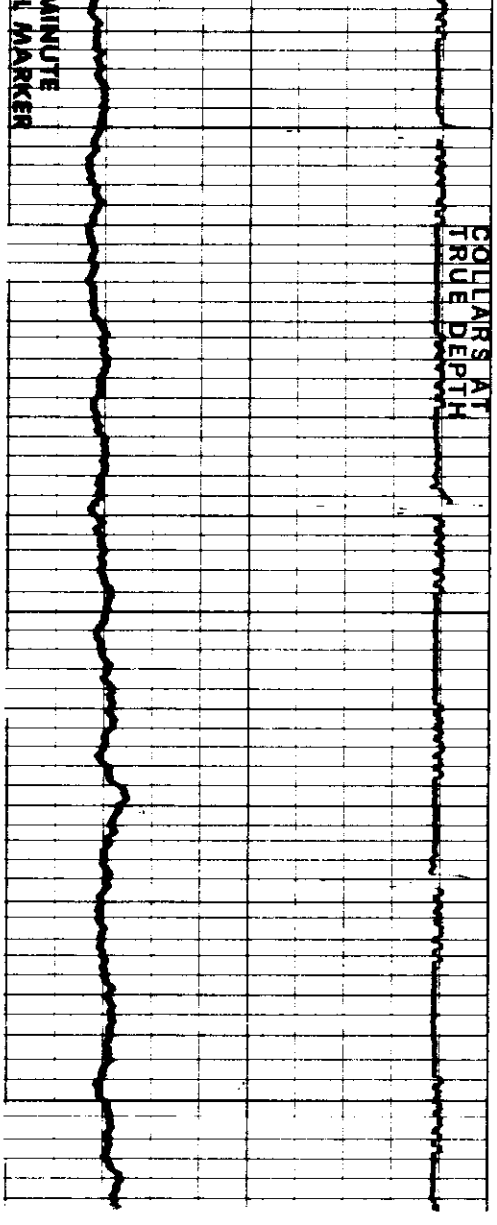
COLLAR LOG	AMPLITUDE	200 MICROSECONDS 1200
NEUTRON	← →	MICRO-SEISMOGRAM[®] LOG
→ ←	CEMENT BOND INCREASES	
COUNT RATE INCREASES		



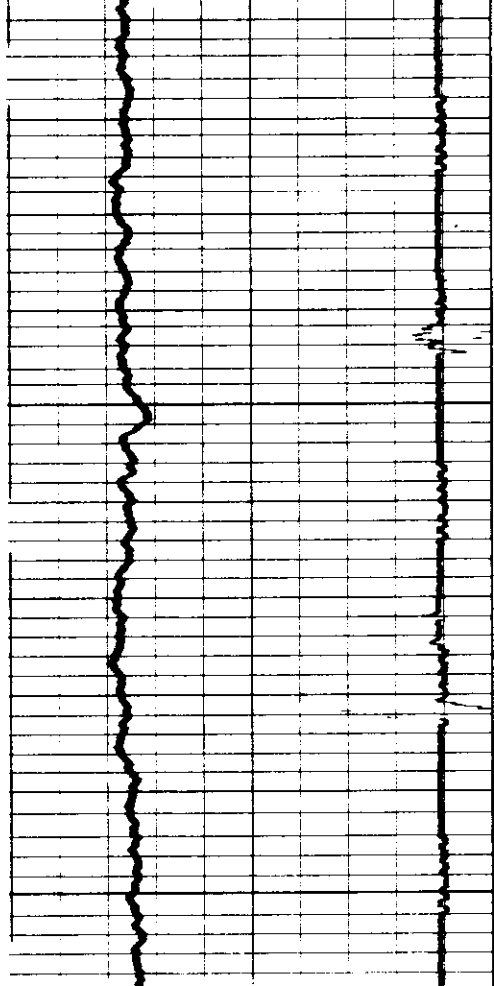


1400

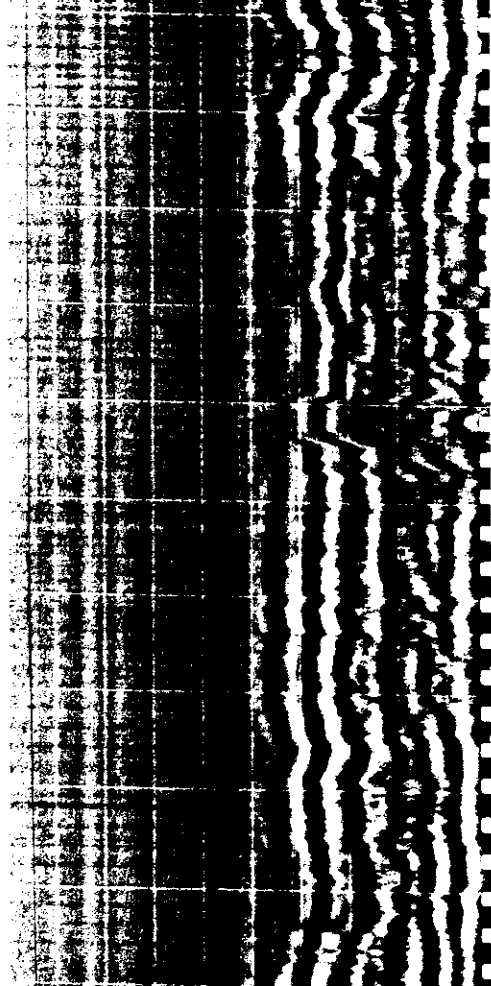
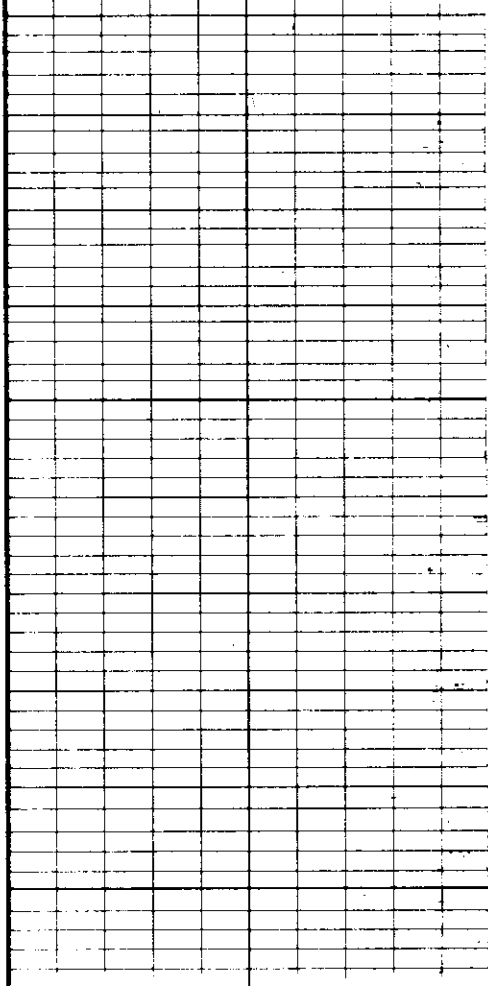
COLLARS AT
TRUE DEPTH

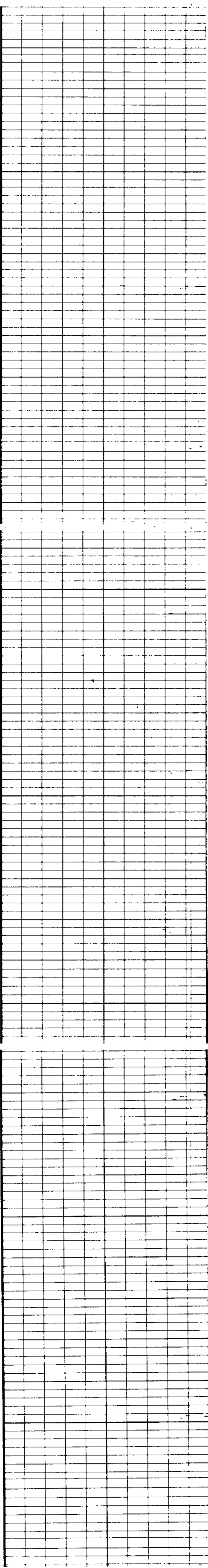
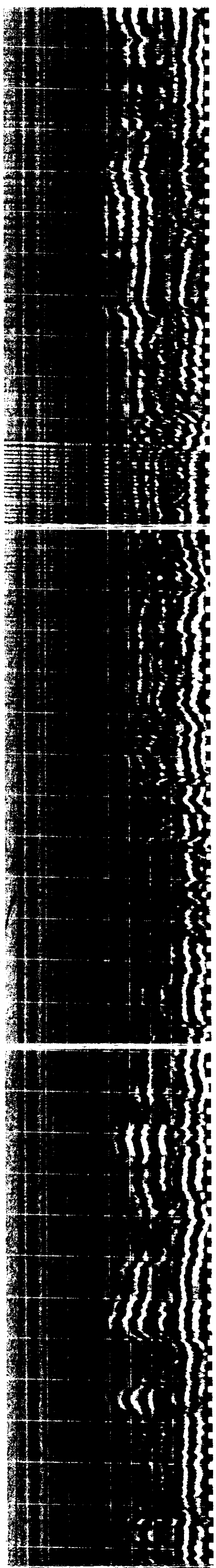


MINUTE
MARKER



1900



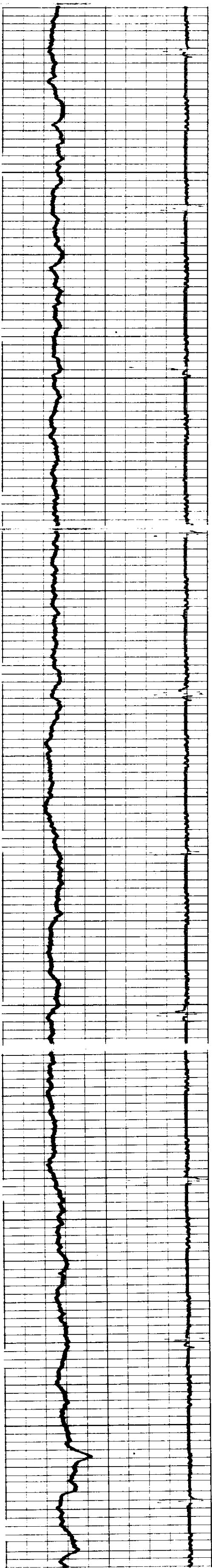


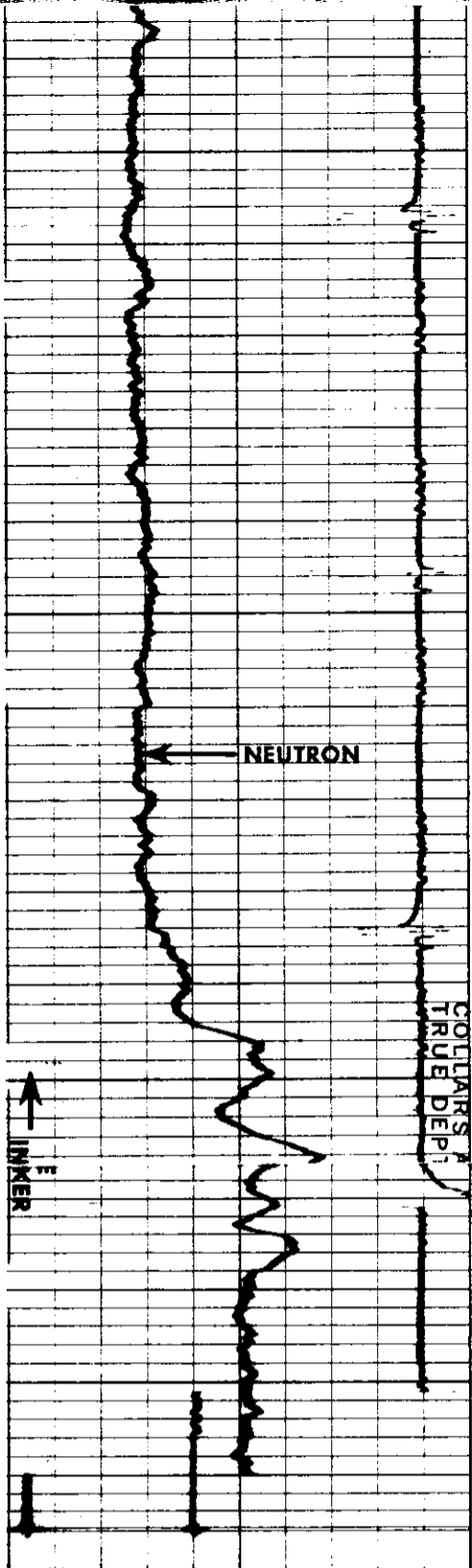
2000

2100

2200

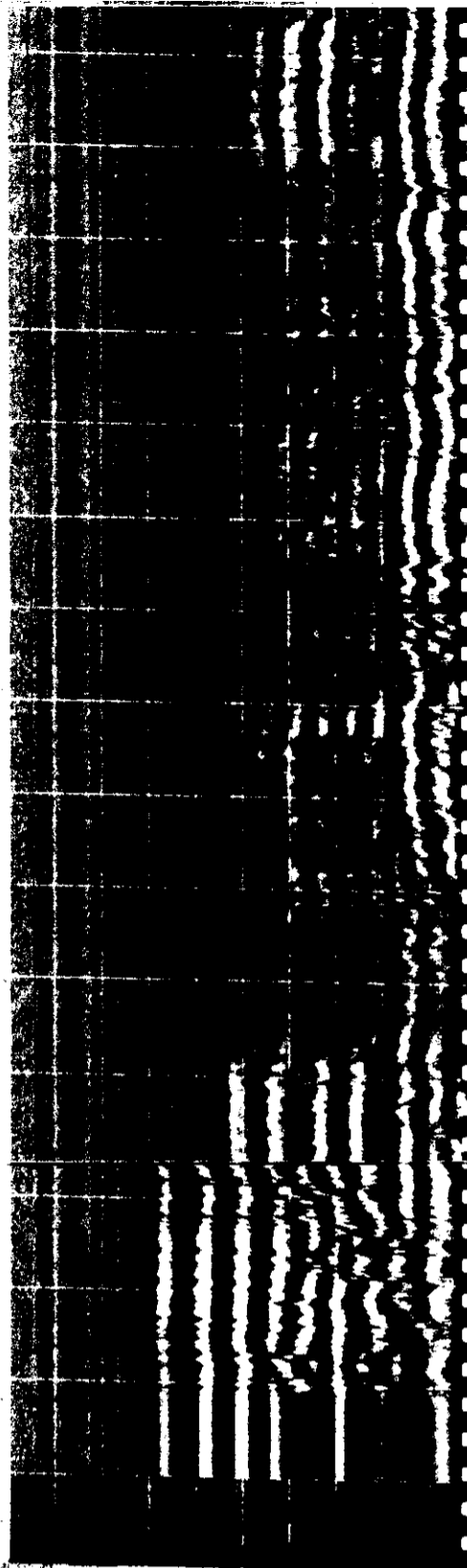
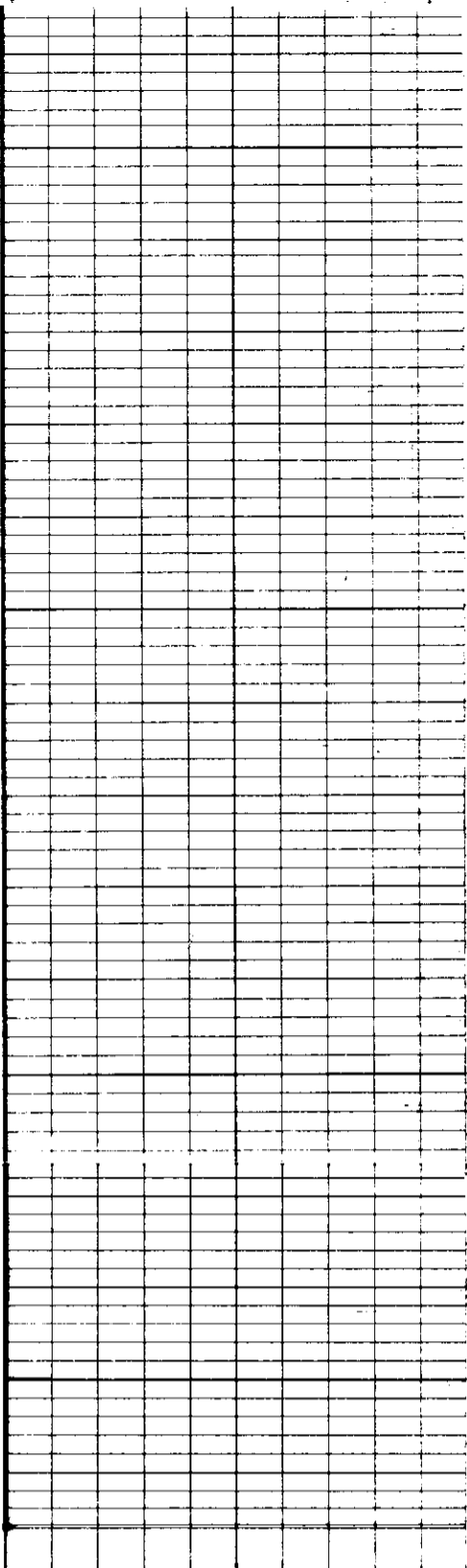
2300





2400

2500



COUNT RATE INCREASES

NEUTRON

COLLAR LOG

CEMENT BOND INCREASES

AMPLITUDE

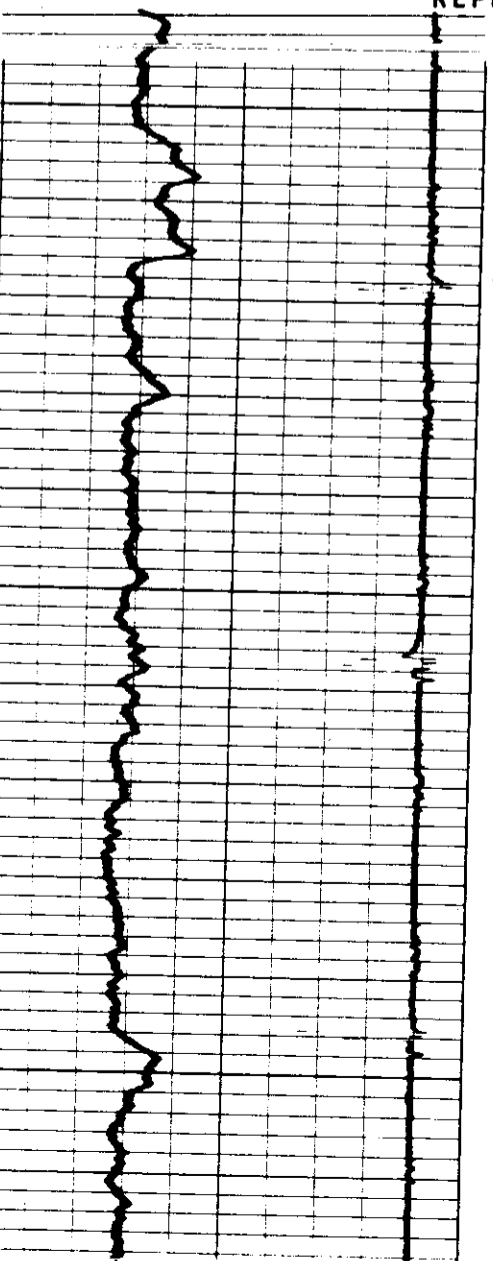
MICRO-SEISMOGRAM[®] LOG

200 MICROSECONDS 1200

REICHHOLD ENERGY CORPORATION
 COLUMBIA COUNTY NO. 1 R/D NO. 1
 NEHALEM BASIN
 COLUMBIA COUNTY, OREGON

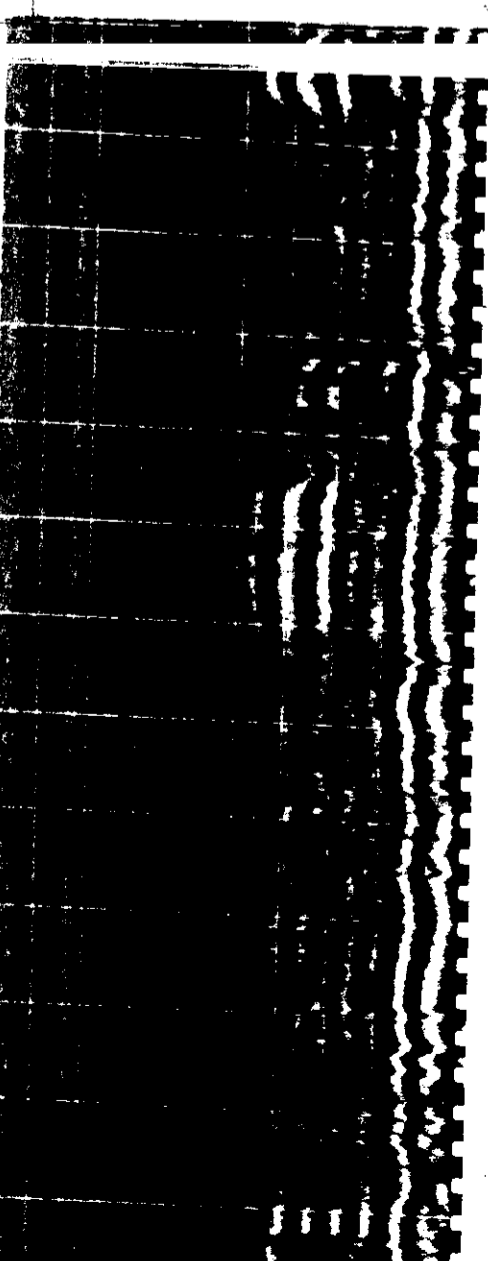
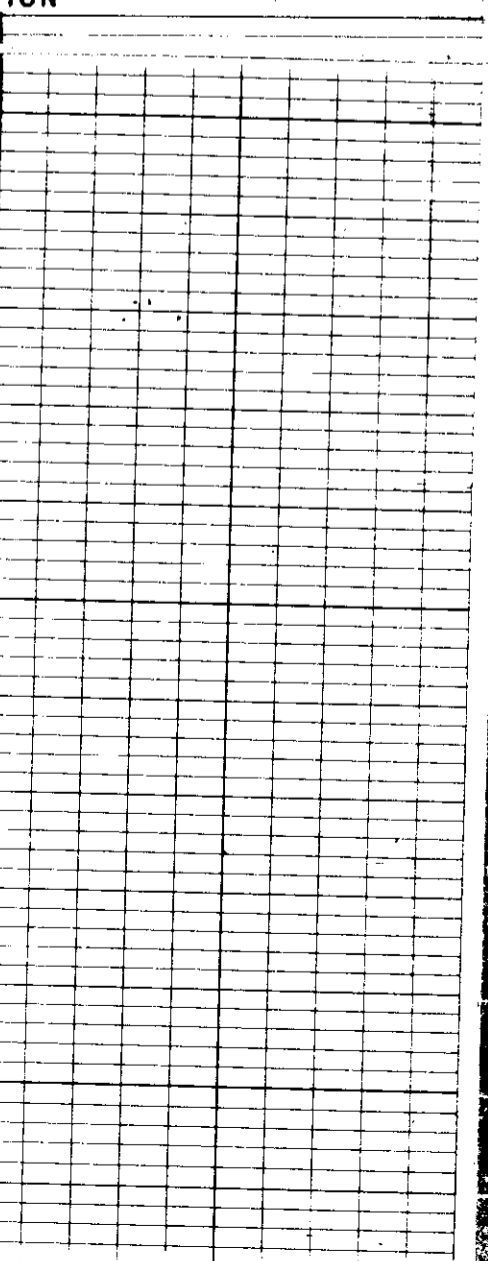
T.D. LOGGED 2500
 T.D. DRILLER 2505
 T.D. WELEX 2505
 ELEV. G.L. 1021 K.B. 1032.2

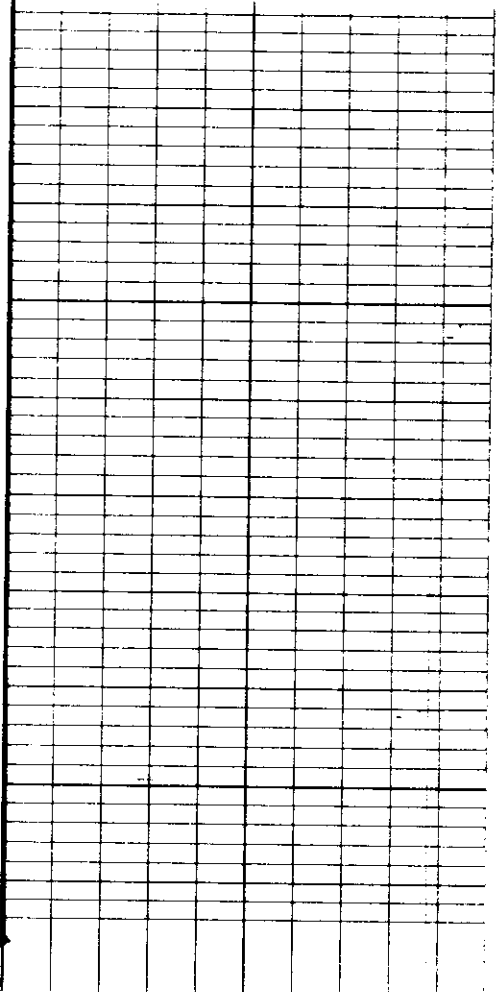
REPEAT SECTION



2300

2400





2500

